

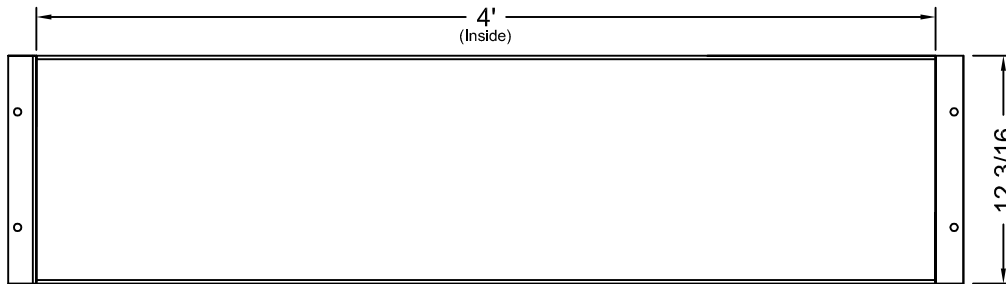
SE4350 - ADJUSTABLE ALUMINUM TAKE-OFF BOARD SYSTEM

SPECIFICATIONS

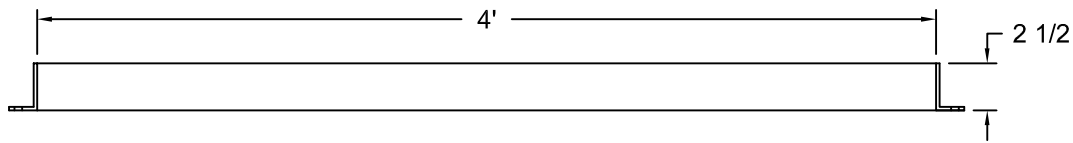
The SE4350S Adjustable Aluminum Take-off Board System consists of an aluminum tray assembly with a cover, a leveling board, and separate take-off and foul boards. The tray is fabricated from 3/16" thick 3003 aluminum sheet and angle which is securely welded together. The lid is fabricated from a 5/16" thick 6061-T6 aluminum sheet top and 3/16" thick supports. The tray is designed to be incorporated into runways and holds the take-off and foul boards flush with the runway surface.

When the take-off position is not in use, the lid replaces the boards, and with the appropriate runway surface mounted to it, will fill the tray flush with the runway. The leveling board is fitted with six adjustable feet and two lateral constraint adjustments to eliminate any motion in the tray and ensure a flush fit for the takeoff and foul boards. The SE4380 flat foul board is for high school and collegiate use. The takeoff board is synthetic.

TAKE-OFF BOARD TRAY

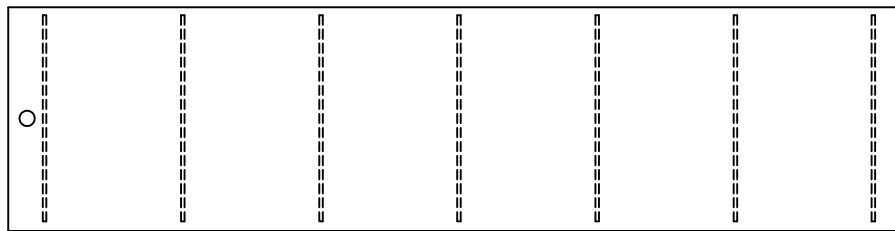


PLAN VIEW



SIDE VIEW

LID FOR TRAY (SE4350 ONLY)



TOP SURFACE OF LID TO BE COVERED WITH TRACK SURFACE MATERIAL TO MATCH RUNWAY SURFACE



(SIDE VIEW)

Proprietary rights of ABT, Inc. are included in the information disclosed herein. The recipient, by accepting this document, agrees that neither this document nor the information disclosed herein nor any part thereof shall be copied, reproduced or transferred to others for manufacturing or for any other purpose except as specifically authorized in writing by ABT, Inc..

SportsEdge

A Division of ABT, Inc.
P.O. Box 837 * 259 Murdock Road
Troutman, NC 28166
800-334-6057

TITLE: SE4350S Take-Off Board System

DRAWN BY: M.D.H.

CHECKED BY:

SCALE: NONE

DATE: 3/17/04

DRAWING NUMBER:

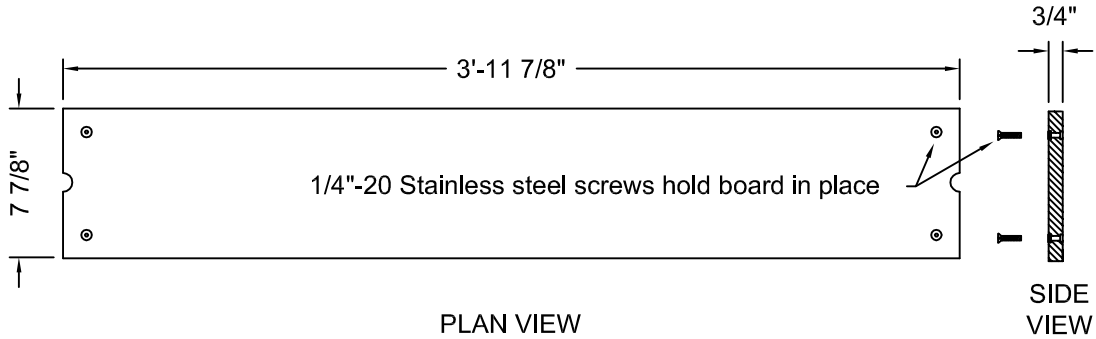
A-

SE4350S-1

DISCLAIMER: The customer and the customer's architects, engineers, consultants and other professionals are completely responsible for the selection, installation, and maintenance of any product purchased from ABT, and EXCEPT AS EXPRESSLY PROVIDED IN ABT'S STANDARD WARRANTIES, ABT MAKES NO WARRANTY, EXPRESS OR IMPLIED, AS TO THE SUITABILITY, DESIGN, MERCHANTABILITY, OR FITNESS OF THE PRODUCT FOR CUSTOMER'S APPLICATION. Copies of ABT's standard warranties are available upon request.

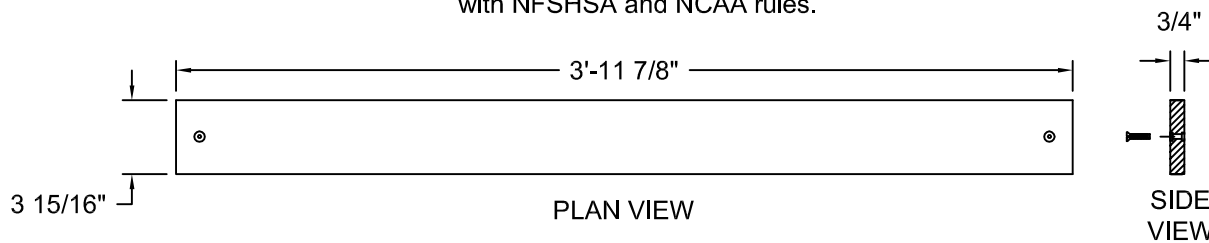
SE4350S - ADJUSTABLE ALUMINUM TAKE-OFF BOARD SYSTEM TAKE-OFF AND FOUL BOARDS

REPLACEABLE SYNTHETIC TAKE-OFF BOARD

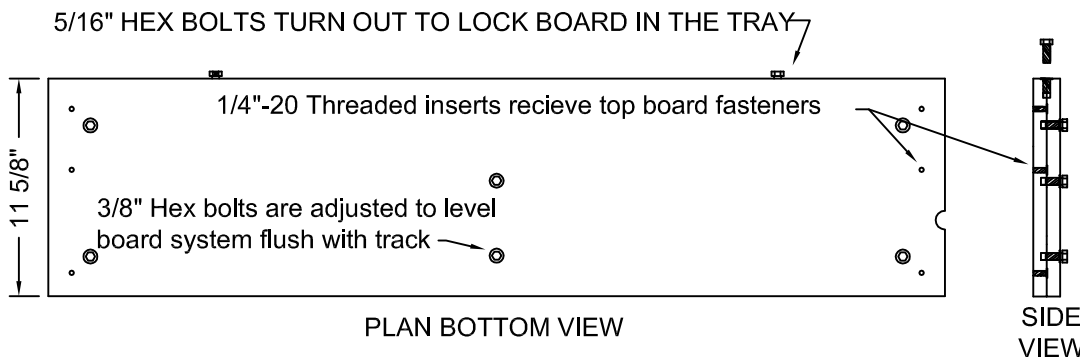


NCAA WOOD FOUL BOARD (ORANGE)

This foul board is flat and sits flush with the runway in accordance with NFSHSA and NCAA rules.



LAMINATED WOOD LEVELING BOARD (WHITE)



COMPLETE BOARD ASSEMBLY

When in place foul board covers the gap for the locking bolts.



SIDE SECTION VIEW

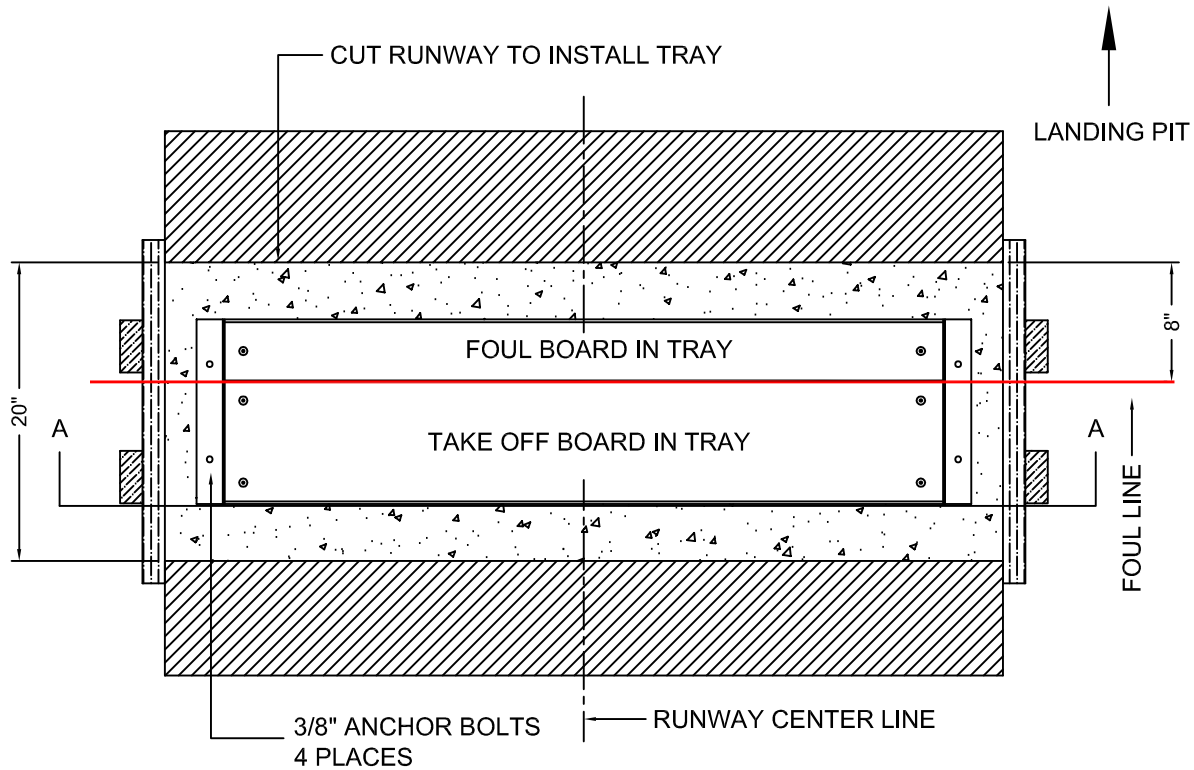
NOTE: Runway recesses for take-off boards should be drained and the boards held up off the bottom with wood or metal spacers.

Proprietary rights of ABT, Inc. are included in the information disclosed herein. The recipient, by accepting this document, agrees that neither this document nor the information disclosed herein nor any part thereof shall be copied, reproduced or transferred to others for manufacturing or for any other purpose except as specifically authorized in writing by ABT, Inc..

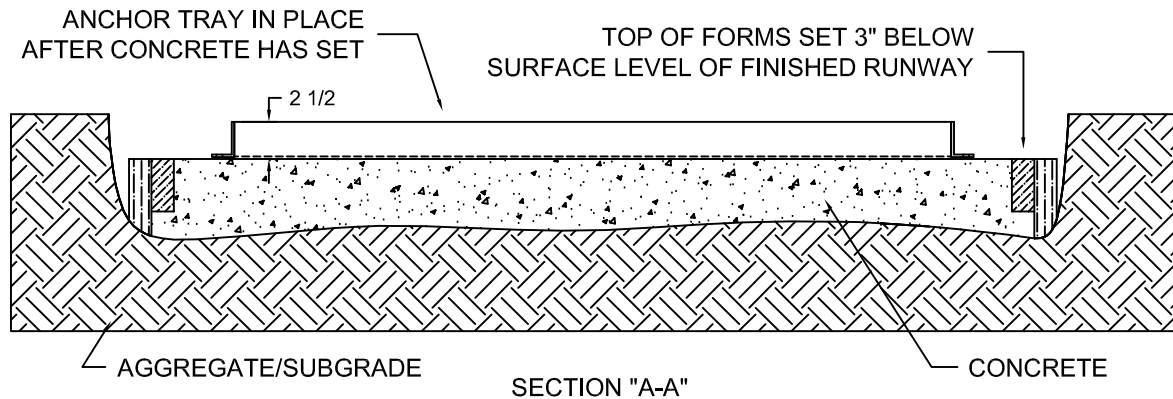
<p style="font-size: 0.8em; margin: 0;">A Division of ABT, Inc. P.O. Box 837 * 259 Murdock Road Troutman, NC 28166 800-334-6057</p>	TITLE: SE4350 8" Take-Off Board System		
	DRAWN BY: M.D.H.	CHECKED BY:	DRAWING NUMBER: SE4350S-2
SCALE: NONE	DATE: 3/17/04	A-	
<p>DISCLAIMER: The customer and the customer's architects, engineers, consultants and other professionals are completely responsible for the selection, installation, and maintenance of any product purchased from ABT, and EXCEPT AS EXPRESSLY PROVIDED IN ABT'S STANDARD WARRANTIES, ABT MAKES NO WARRANTY, EXPRESS OR IMPLIED, AS TO THE SUITABILITY, DESIGN, MERCHANTABILITY, OR FITNESS OF THE PRODUCT FOR CUSTOMER'S APPLICATION. Copies of ABT's standard warranties are available upon request.</p>			

SE4350S - ADJUSTABLE ALUMINUM TAKE-OFF BOARD SYSTEM INSTALLATION

INSTALLING SE4350S TRAY ON A RECESSED CONCRETE PAD



PLAN VIEW



SECTION "A-A"

NOTE: The surface level of the finished runway includes the actual thickness of the artificial runway surface to be applied to the concrete or asphalt runway.

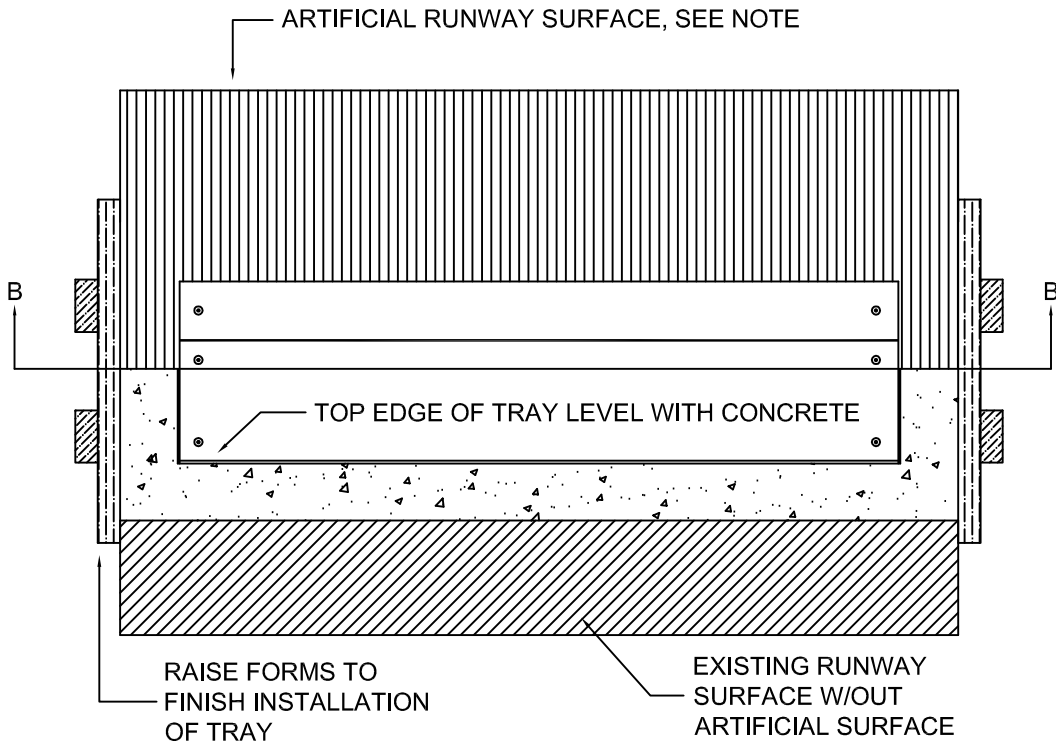
NOTICE: All installations should be done by experienced contractors and in accord with all applicable codes, laws and regulations. Suggested installation instructions herein are illustrative only and should be adapted to suit local requirements. SportsEdge is not responsible for the manner in which these products are installed.

Proprietary rights of ABT, Inc. are included in the information disclosed herein. The recipient, by accepting this document, agrees that neither this document nor the information disclosed herein nor any part thereof shall be copied, reproduced or transferred to others for manufacturing or for any other purpose except as specifically authorized in writing by ABT, Inc..

<p style="font-size: 0.8em; margin: 0;">A Division of ABT, Inc. P.O. Box 837 * 259 Murdock Road Troutman, NC 28166 800-334-6057</p>	TITLE: SE4350 - Installation	
	DRAWN BY: M.D.H.	CHECKED BY:
SCALE: NONE	DATE: 3/17/04	DRAWING NUMBER: A- SE4350S-3
<p>DISCLAIMER: The customer and the customer's architects, engineers, consultants and other professionals are completely responsible for the selection, installation, and maintenance of any product purchased from ABT, and EXCEPT AS EXPRESSLY PROVIDED IN ABT'S STANDARD WARRANTIES, ABT MAKES NO WARRANTY, EXPRESS OR IMPLIED, AS TO THE SUITABILITY, DESIGN, MERCHANTABILITY, OR FITNESS OF THE PRODUCT FOR CUSTOMER'S APPLICATION. Copies of ABT's standard warranties are available upon request.</p>		

SE4350S - ADJUSTABLE ALUMINUM TAKE-OFF BOARD SYSTEM INSTALLATION

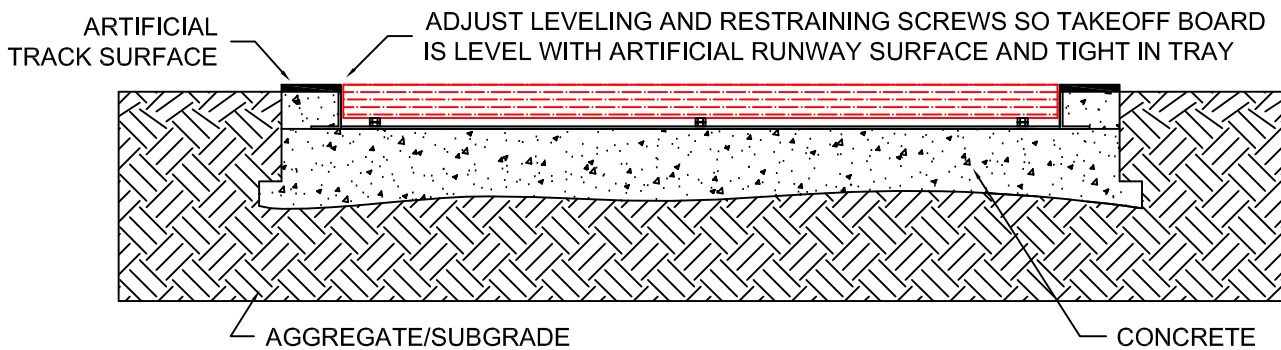
FINISHING INSTALLATION



PLAN VIEW

NOTE:

1. Artificial runway surface should be trimmed even with the inside edge of the tray.
2. If tray is installed in an asphalt runway without an artificial surface, the top edge of the tray should be 1/2" below the asphalt runway.



SECTION "B-B"

INSTALLATION FINISHED WITH TAKE-OFF BOARD INSTALLED

Proprietary rights of ABT, Inc. are included in the information disclosed herein. The recipient, by accepting this document, agrees that neither this document nor the information disclosed herein nor any part thereof shall be copied, reproduced or transferred to others for manufacturing or for any other purpose except as specifically authorized in writing by ABT, Inc..

<p style="font-size: 1.2em; font-weight: bold; color: red; margin: 0;">SportsEdge</p> <p style="margin: 0;">A Division of ABT, Inc. P.O. Box 837 * 259 Murdock Road Troutman, NC 28166 800-334-6057</p>	TITLE: SE4350 - Installation		
	DRAWN BY: M.D.H.	CHECKED BY:	DRAWING NUMBER: SE4350S-4
SCALE: NONE	DATE: 3/17/04	A-	
<p><small>DISCLAIMER: The customer and the customer's architects, engineers, consultants and other professionals are completely responsible for the selection, installation, and maintenance of any product purchased from ABT, and EXCEPT AS EXPRESSLY PROVIDED IN ABT'S STANDARD WARRANTIES, ABT MAKES NO WARRANTY, EXPRESS OR IMPLIED, AS TO THE SUITABILITY, DESIGN, MERCHANTABILITY, OR FITNESS OF THE PRODUCT FOR CUSTOMER'S APPLICATION. Copies of ABT's standard warranties are available upon request.</small></p>			