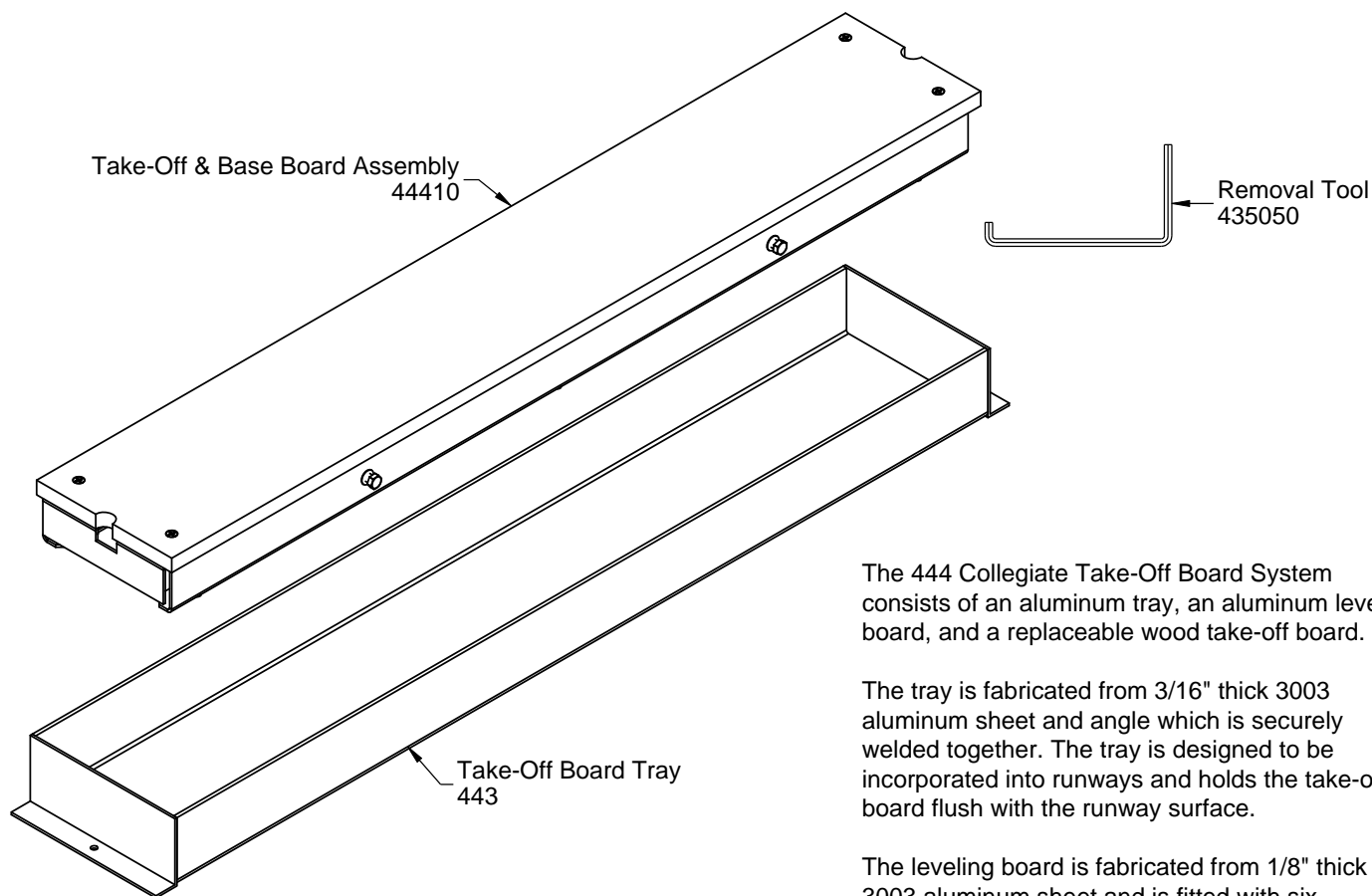


Proprietary rights of ABT, Inc. are included in the information disclosed herein. The recipient, by accepting this document, agrees that neither this document nor the information disclosed herein nor any part thereof shall be copied, reproduced or transferred to others for manufacturing or for any other purpose except as specifically authorized in writing by ABT, Inc..

<b>SportsEdge</b> A Division of ABT, Inc. P.O. Box 837 * 259 Murdock Road Troutman, NC 28166 800-334-6057	<b>TITLE: SE444 ADJUSTABLE TAKE OFF SYSTEM</b>		
	<b>DRAWN BY:</b> CC	<b>CHECKED BY:</b>	<b>DRAWING NUMBER:</b> SE444.1
<b>SCALE:</b> NONE	<b>DATE:</b> 4-27-09	<b>A-</b>	
<small>DISCLAIMER: The customer and the customer's architects, engineers, consultants and other professionals are completely responsible for the selection, installation, and maintenance of any product purchased from ABT, and EXCEPT AS EXPRESSLY PROVIDED IN ABT'S STANDARD WARRANTIES, ABT MAKES NO WARRANTY, EXPRESS OR IMPLIED, AS TO THE SUITABILITY, DESIGN, MERCHANTABILITY, OR FITNESS OF THE PRODUCT FOR CUSTOMER'S APPLICATION. Copies of ABT's standard warranties are available upon request.</small>			

## 444 - COLLEGIATE TAKE-OFF BOARD SYSTEM SPECIFICATIONS



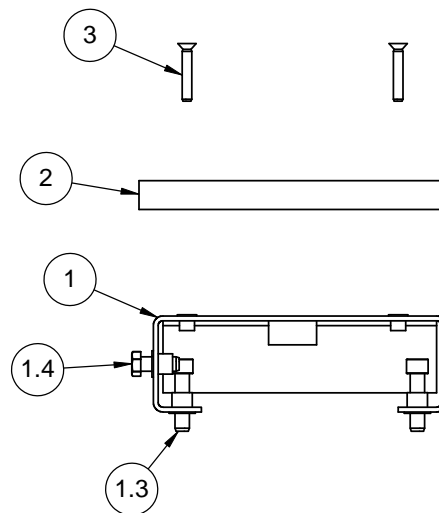
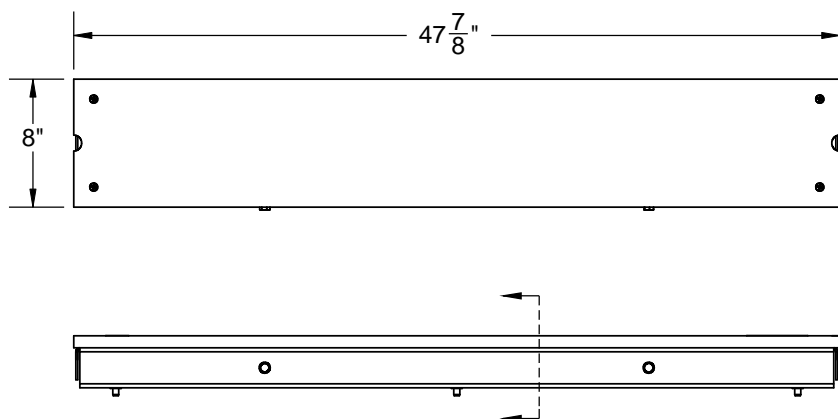
The 444 Collegiate Take-Off Board System consists of an aluminum tray, an aluminum leveling board, and a replaceable wood take-off board.

The tray is fabricated from 3/16" thick 3003 aluminum sheet and angle which is securely welded together. The tray is designed to be incorporated into runways and holds the take-off board flush with the runway surface.

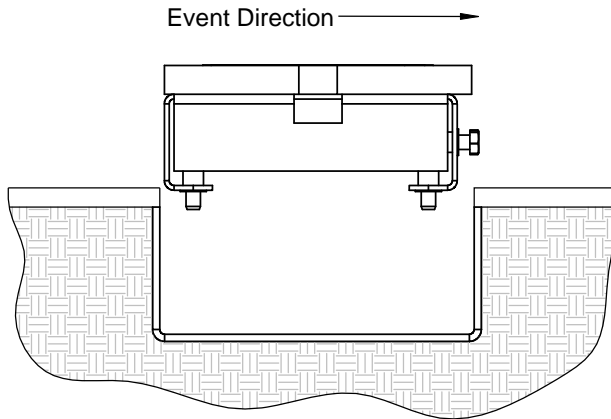
The leveling board is fabricated from 1/8" thick 3003 aluminum sheet and is fitted with six adjustable feet and two lateral constraint adjustments to eliminate any motion in the tray and ensure a flush fit for the take-off board.

Take-off boards are fabricated from 3/4" marine grade plywood, sealed and painted with outdoor enamel coating.

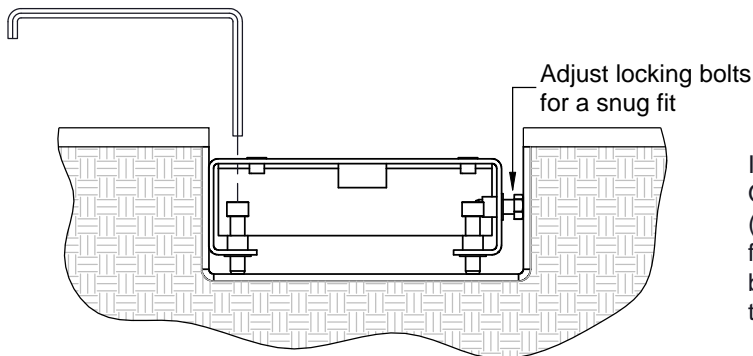
ITEM NO.	PART NUMBER	DESCRIPTION	QTY.
1	44402	Leveling Base Board, 444	1
1.3	M2530	3/8"-16 x 1.5" SS Socket Cap Screw	6
1.4	M2787	3/8"-16 x 1" SS Hex Bolt	2
2	44404	Painted Wood Take-Off Board, 444	1
3	M2257	1/4"-20 x 1.5" SS FH Phillips Screw	4



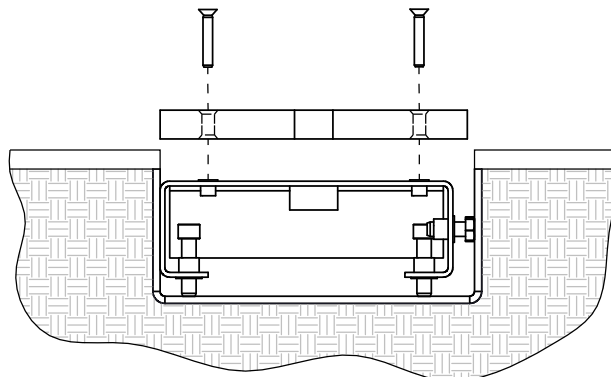
## 444 - COLLEGIATE TAKE-OFF BOARD SYSTEM CUSTOMER INSTRUCTIONS



Place the Take-Off & Base Board Assembly (44410) in the Tray (443) so that the locking bolts (M2787) face the sand pit.

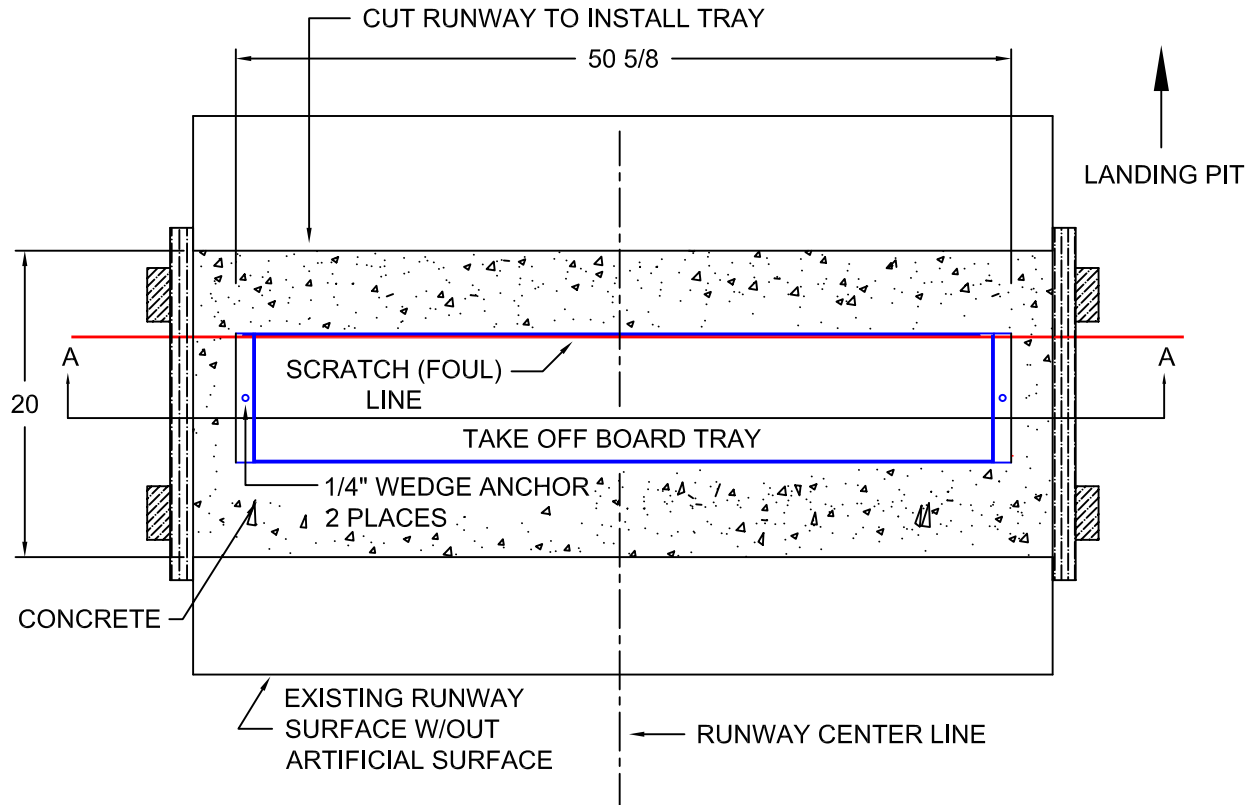


If the board needs adjusting, remove the Take-Off board (44404) and use the removal tool (435050) to adjust the leveling screws (M2530) from the top down. The locking bolts (M2787) can be adjusted so that the base board (44402) sits tight in the tray (443).

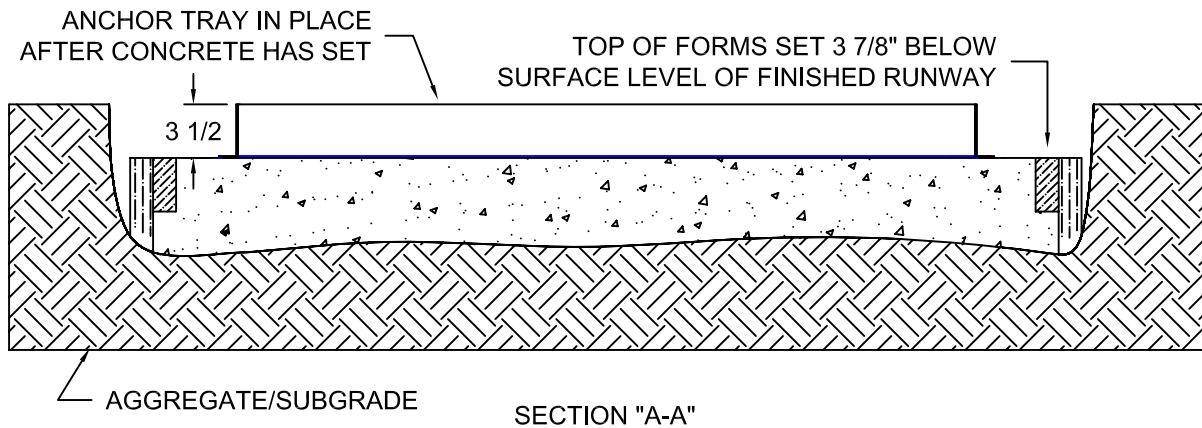


Replace the Take-Off board (44404) and secure it in place with four screws (M2257).

INSTALLING 443 TRAY ON A RECESSED CONCRETE PAD

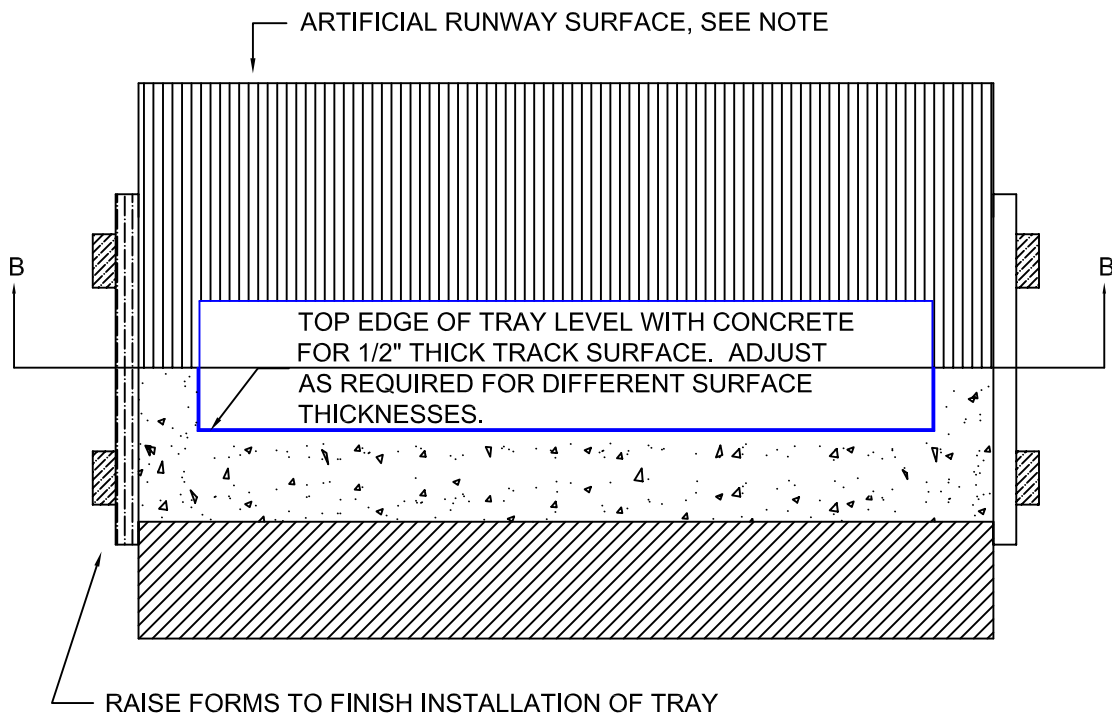


NOTE: It is recommended that a drain be installed in the box by drilling a hole in the box to match a PVC pipe drain line through the base concrete. This line can go to a drainage system or a gravel sump.



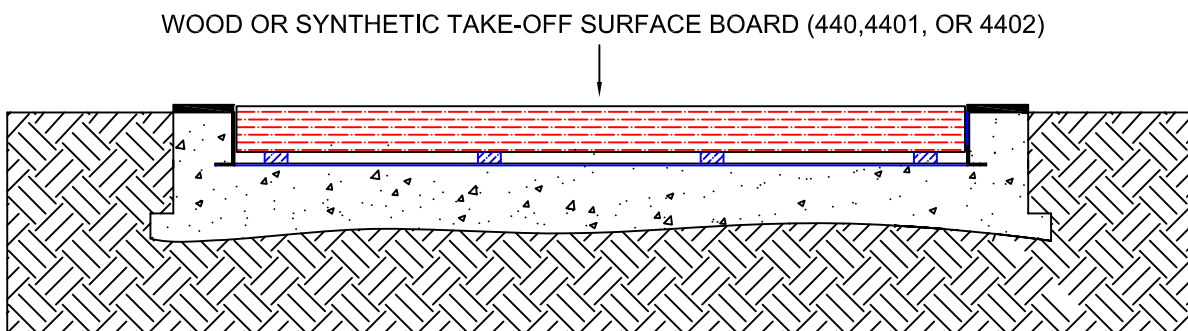
**NOTICE:** All installations should be done by experienced contractors and in accord with all applicable codes, laws and regulations. Suggested installation instructions herein are illustrative only and should be adapted to suit local requirements. Gill Athletics is not responsible for the manner in which these products are installed.

FINISHING INSTALLATION



NOTE:

1. Artificial runway surface should be trimmed even with the inside edge of the tray.
2. If tray is installed in an asphalt runway without an artificial surface, the top edge of the tray should be 1/2" below the asphalt runway.



SECTION "B-B"

INSTALLATION FINISHED WITH GILL 440 SERIES TAKE-OFF BOARD INSTALLED