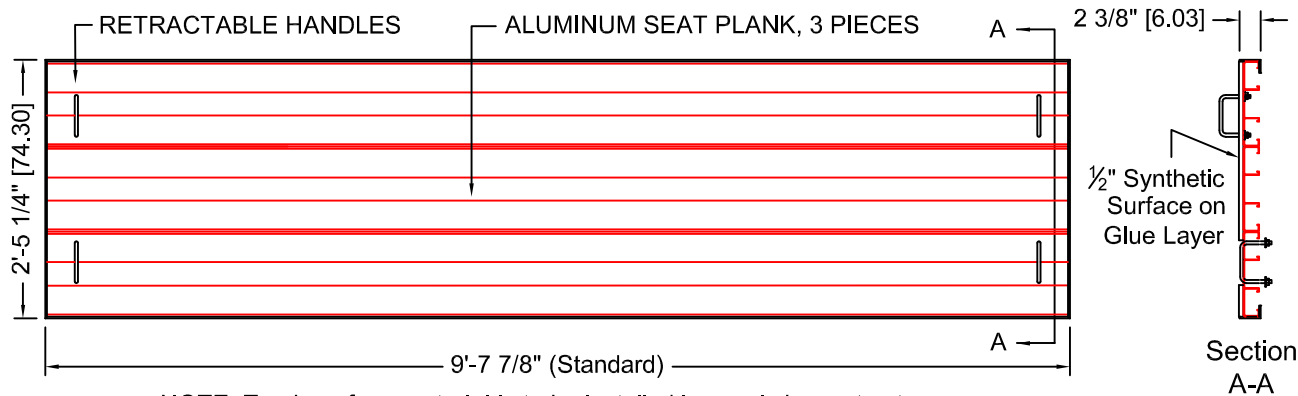


# SE730148 - LONG & TRIPLE JUMP SAND PIT COVER

## SPECIFICATIONS

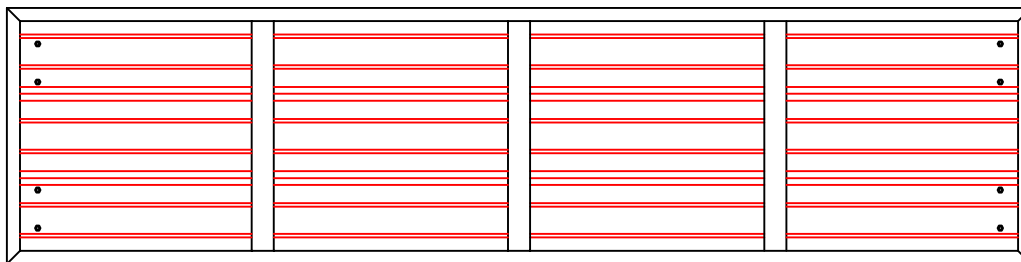
The SE730148 Long Jump & Triple Jump Sand Pit Cover is fabricated from 9 5/8" x 1 3/4" x 1/8" wall, extruded 6061-T6 aluminum seat plank. Three planks per panel are securely welded together in a frame of 2 3/8" x 1 1/2" x 3/16" aluminum angle.

Each panel comes with four retractable handles for easy installation and removal. A 2" wide supporting recess is required on each side wall for the panels. This recess is not required on the end walls. Standard panel width is 9' 7 7/8". To ensure proper fit, manufacture commences only upon receipt of form SE730148-2. A typical sand pit requires 10-11 cover panels. For longer pits, add 29 1/8" to the pit length for each additional panel. Measurements in brackets are in centimeters.

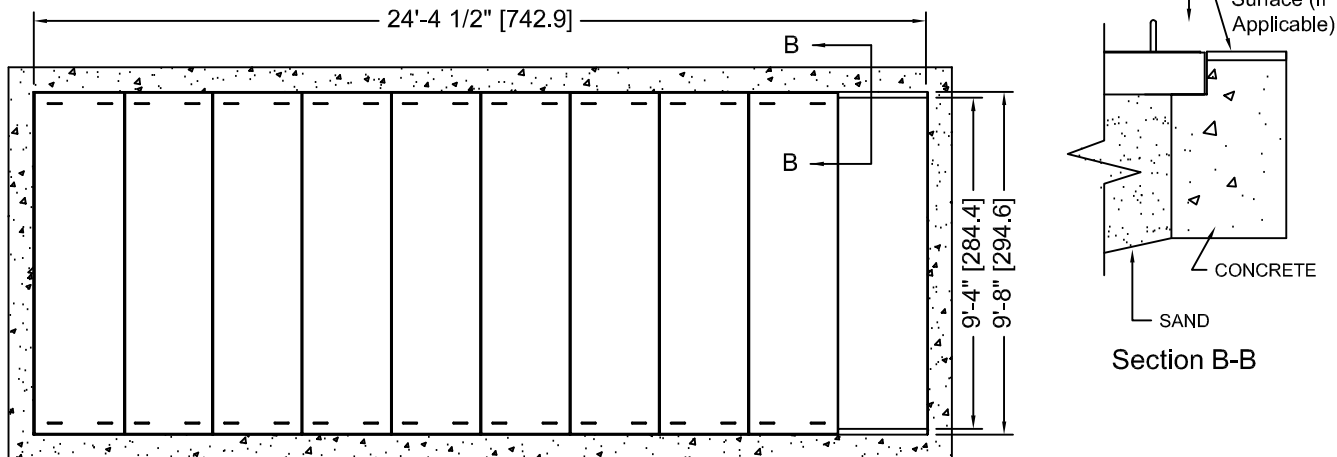


NOTE: Track surface material is to be installed in panels by contractor.

FRAME - 2 3/8" x 1 1/2" aluminum angle.



NOTE: For a 1/2" synthetic surface, a 2 7/16" deep x 2" wide recess (including synthetic surface) on side walls is required to support cover panels. Sand trap systems may require a wider recess.



NOTE: Typical sand pit requiring 10 cover panels shown, one cover is removed. For longer sand pits, add 29 1/4" for each additional panel required.

Proprietary rights of ABT, Inc. are included in the information disclosed herein. The recipient, by accepting this document, agrees that neither this document nor the information disclosed herein nor any part thereof shall be copied, reproduced or transferred to others for manufacturing or for any other purpose except as specifically authorized in writing by ABT, Inc..

<b>SportsEdge</b> A Division of ABT, Inc. P.O. Box 837 * 259 Murdock Road Troutman, NC 28166 800-334-6057	<b>TITLE:</b> SE730148 Long / Triple Jump Pit Cover		<b>DRAWING NUMBER:</b> <b>A-</b> SE730148-1
	<b>DRAWN BY:</b> M.D.H.	<b>CHECKED BY:</b>	
<b>SCALE:</b> NONE	<b>DATE:</b> 3/31/04	<b>DISCLAIMER:</b> The customer and the customer's architects, engineers, consultants and other professionals are completely responsible for the selection, installation, and maintenance of any product purchased from ABT, and EXCEPT AS EXPRESSLY PROVIDED IN ABT'S STANDARD WARRANTIES, ABT MAKES NO WARRANTY, EXPRESS OR IMPLIED, AS TO THE SUITABILITY, DESIGN, MERCHANTABILITY, OR FITNESS OF THE PRODUCT FOR CUSTOMER'S APPLICATION. Copies of ABT's standard warranties are available upon request.	

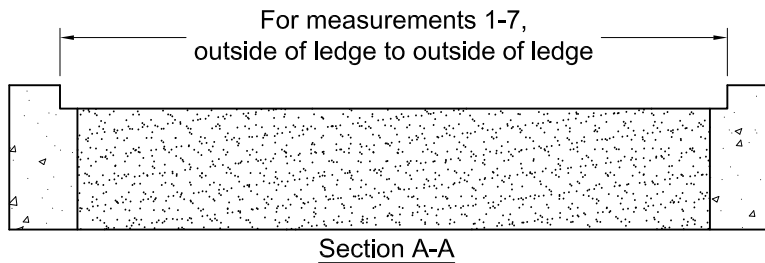
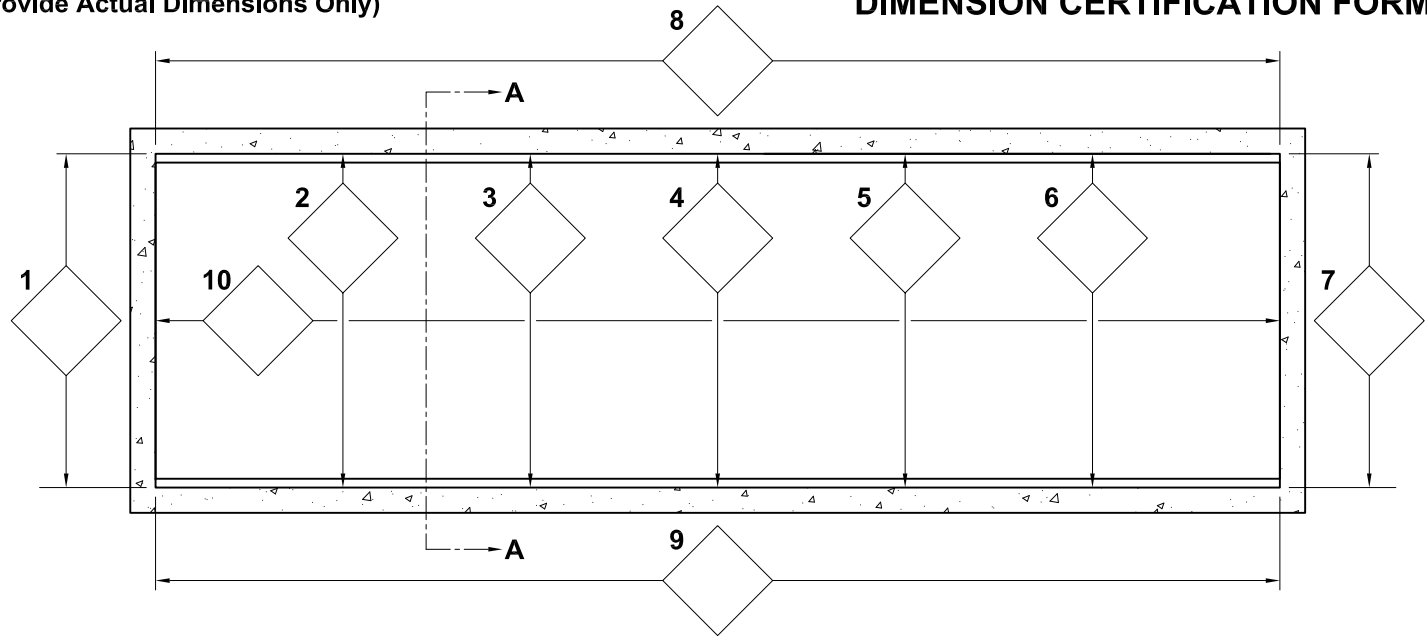


# 730148 - LONG AND TRIPLE JUMP SAND PIT DIMENSION CERTIFICATION FORM

(Provide Actual Dimensions Only)

## INSTRUCTIONS

Use this form to record measurements of the long and triple jump sand pit for which a cover order is requested. Record ACTUAL measurements to within  $\frac{1}{16}$ " [1mm]. There are ten entry boxes provided to record the measurements taken. Width measurements, 1 - 7, include the cover ledge on each side. Measurements 2 - 6 should be evenly spaced along the length of the pit, with measurement 4 at the middle. Please fill in the project, point of contact, and certification information in the blank spaces provided. Panels will be built  $\frac{1}{2}$ " smaller than the shortest width listed unless special instructions are received. Special modified cover panels can be built for existing pits built without a supporting shelf in the wall.



## Frame Options (check one)

<p><b>Recessed (for ledge)</b></p>	<p>This is the standard frame. The cover is <math>2\frac{3}{8}</math>" thick with a <math>\frac{1}{16}</math>" recess for track surface.</p>
<p><b>Flush (for ledge)</b></p>	<p>This frame option is 2" thick and is intended for use with out track surface.</p>
<p><b>Recessed (for no ledge)</b></p>	<p>This frame option is <math>2\frac{3}{8}</math>". It is intended for situations where there is no ledge to rest the cover on. The cover has a <math>\frac{1}{16}</math>" recess for track surface. The cover will stand <math>\frac{3}{16}</math>" higher than the surrounding surface.</p>
<p><b>Flush (for no ledge)</b></p>	<p>This frame option is 2" thick and is intended for situations where there is no ledge to rest the cover on. The cover does not have a recess for track surface. The cover will stand <math>\frac{3}{16}</math>" higher than the surrounding surface.</p>

## Point of Contact

Name:	Phone:
Address:	Fax:

## Certification

Signature & Date:
Name & title of authorizing official:

## Project

Title:
Location: