

SportsEdge®

Safety. Quality. Versatility. Esthetics.



SPORTSEGE® HQ PANEL DRAIN



www.sportsedge.com

SportsEdge® HQ

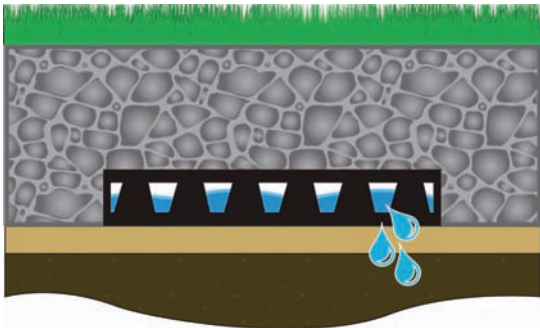
Panel Drain

SportsEdge® HQ Panel Drains are designed to be used as a subsurface drainage system for synthetic and natural turf sports fields. With more than 55% open area, **SportsEdge® HQ** offers significantly higher water collection and evacuation rates than stone and perforated pipe drains. This two-part pre-fabricated system consists of a solid formed polystyrene perforated core that is fully wrapped

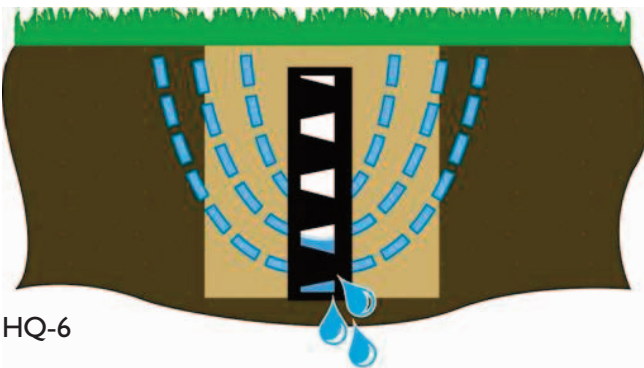
with a non-woven spun-bound polypropylene filter fabric. This high strength fabric allows water to pass freely into the core while restricting any movement of rubber, sharp stone or other particles that might clog the core. The spun-bound polypropylene filter fabric allows the very smallest particles to pass into the core to flow out in solution, leaving larger aggregate to stage with voids for uninterrupted drainage. The core allows water to flow to designated drainage exits. This high compressive strength prefabricated drain is made from **recycled materials**.



HQ-12



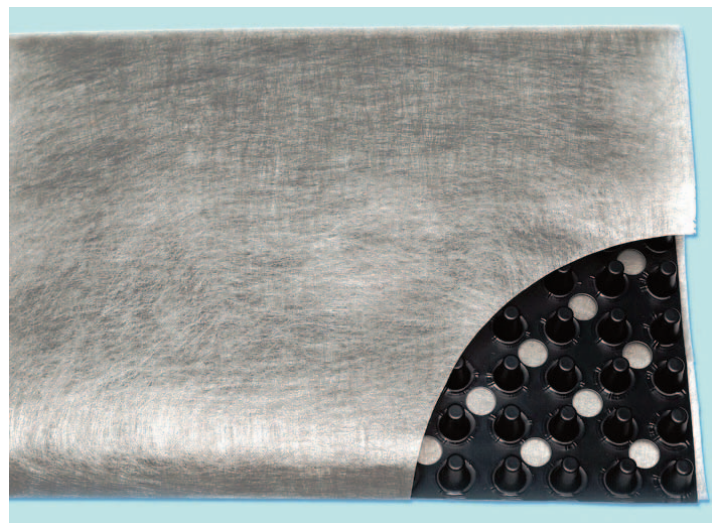
Typically Installed Horizontally in Synthetic Turf Field Applications.



HQ-6

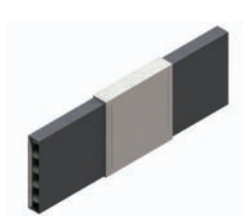
Typically Installed Vertically in Natural Turf Field Applications.

SportsEdge® HQ Panel Drain is available in 6” and 12” widths. Other widths up to 36” are also available. A full line of outlets, splices and fittings are also available.

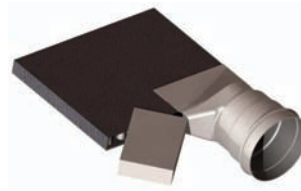




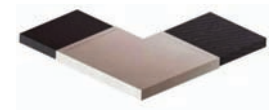
6" End Outlet



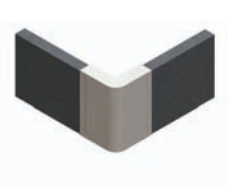
6" Splice



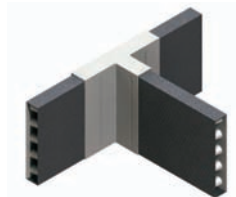
12" - End Outlet



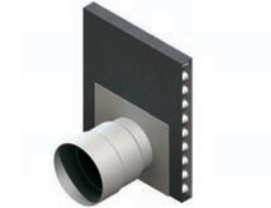
12" - 90° L



6" Corner Fitting



6" or Universal Tee



Universal Tee Outlet

OUTLETS:

Fittings are available to connect SportsEdge® HQ to 4" pipe. These are available in several configurations, depending on drain width and pipe location. Details are available upon request.

Splices & 90° Turns:

Splices are available for 6" SportsEdge® HQ. Other widths are spliced by peeling back the fabric and interlocking the dimpled core. Afterwards, replace the fabric and secure with tape. Ninety degree L's are available for 6" or 12" HQ

CORNERS:

Fittings are available for bending drain around corners. Detailed instructions for installation of fittings available upon request.

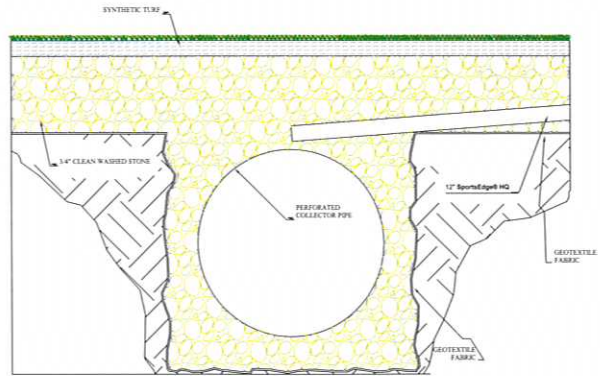
RECYCLED CONTENT:

SportsEdge® Strip Drain products are manufactured with post industrial recycled content.

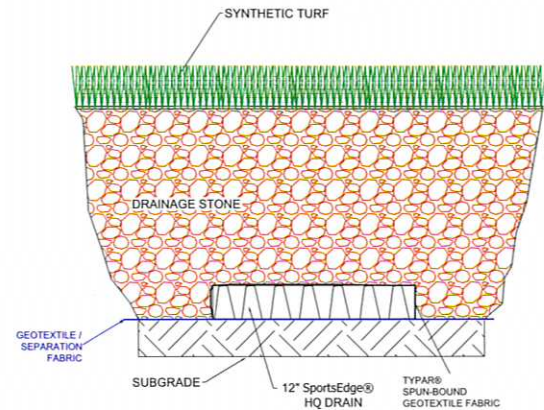


SportsEdge® HQ

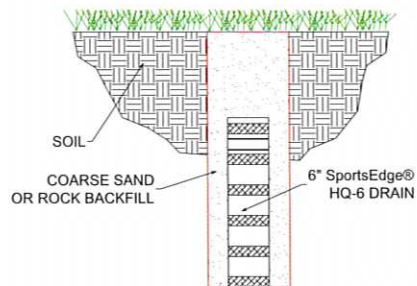
Panel Drain Illustrations



Typical Termination at Collector Pipe



Synthetic Turf HQ-12 Panel Drain



Natural Turf HQ-6 Panel Drain

TECHNICAL DATA			
Physical Property	Unit of Measure	Typical Value	ASTM Test Method
FABRIC - (PP)			
Grab Tensile	lbs	145	D 4632
Grab Elongation	%	60	D-4632
Puncture Resistance	lbs	50	D-4833
EOS (AOS)	US Std Sieve	70	D-4751
Flow Rate	gpm/ft ²	80	D-4491
CORE			
Thickness	in	1	D-1777
Compressive Strength	PSF	9,000	D-1621
Flow Capacity per unit width	gpm/ft	21	D-4716
All information, drawings and specifications are based on the latest product information available at the time of printing. Due to constant improvement and engineering progress SportsEdge® reserves the right to make changes without notice. All physical properties are typical values. Standard variations of 10% in mechanical properties and 20% in hydraulic properties are considered normal.			

PACKAGING: Roll Sizes - 6" x 150'
12" x 150'



All products available in Canada & Mexico



DISCLAIMER The customer and the customer's architects, engineers, consultants and other professionals are completely responsible for the selection, installation, and maintenance of any product purchased from ABT, and EXCEPT AS EXPRESSLY PROVIDED IN ABT'S STANDARD WARRANTIES, ABT MAKES NO WARRANTY, EXPRESS OR IMPLIED, AS TO THE SUITABILITY, DESIGN, MERCHANTABILITY, OR FITNESS OF THE PRODUCT FOR CUSTOMER'S APPLICATION. Copies of ABT's standard warranties are available upon request.



SportsEdge®
Safety. Quality. Versatility. Aesthetics.

800-334-6057
www.sportsedge.com

ABT, INC.