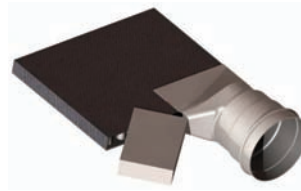




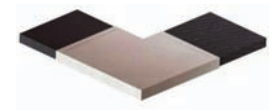
6" End Outlet



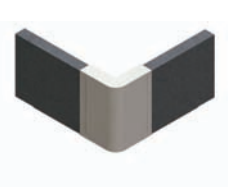
6" Splice



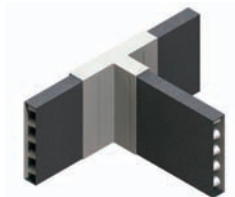
12" - End Outlet



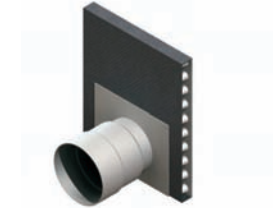
12" - 90° L



6" Corner Fitting



6" or Universal Tee



Universal Tee Outlet

OUTLETS:

Fittings are available to connect SportsEdge® HQ to 4" pipe. These are available in several configurations, depending on drain width and pipe location. Details are available upon request.

Splices & 90° Turns:

Splices are available for 6" SportsEdge® HQ. Other widths are spliced by peeling back the fabric and interlocking the dimpled core. Afterwards, replace the fabric and secure with tape. Ninety degree L's are available for 6" or 12" HQ

CORNERS:

Fittings are available for bending drain around corners. Detailed instructions for installation of fittings available upon request.

RECYCLED CONTENT:

SportsEdge® Strip Drain products are manufactured with post industrial recycled content.

