

XT Slot Drain Suspended Installation

Materials List

Slot Drain Channels & Catch Basins
Split PVC Couplers
¼" Eye Bolts w/ nuts & washers; Bolts should be at least 7" length
Concrete Forms / Form Lumber
Nail Stakes
String line
Laser level with receiver and grade rod
2" x 6" x 24" Suspension Lumber
2" wide duct tape; enough for entire length of slot drain
Concrete Saw w/ diamond blade
3/8" Masonry Drill Bit
3/8" wood drill bit

Please read carefully. Read installation instructions from beginning to end before beginning the installation.

Notes:

1. Be sure to completely consolidate the concrete during the concrete pour.
2. It is recommended that a backer rod or other filler material be placed in the slot to ensure that the slot remains clear of track material. Use a sharp utility or razor blade to remove the backer rod material once the track material has set.
3. Always double check the channel locations before the final concrete pour.
4. Keep the polymer concrete slot opening protected and clean throughout the construction process.

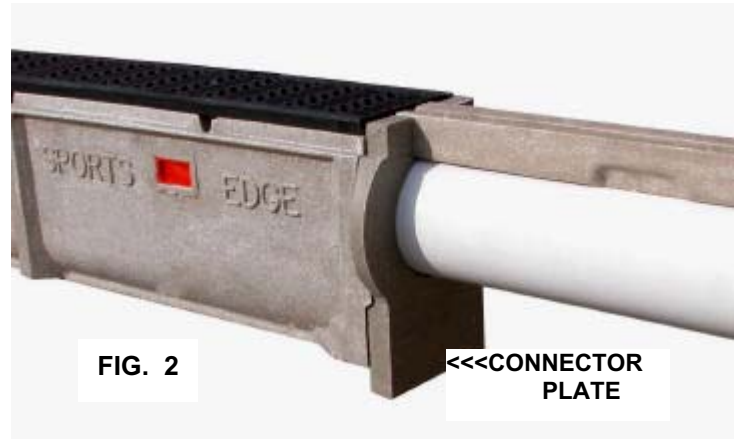
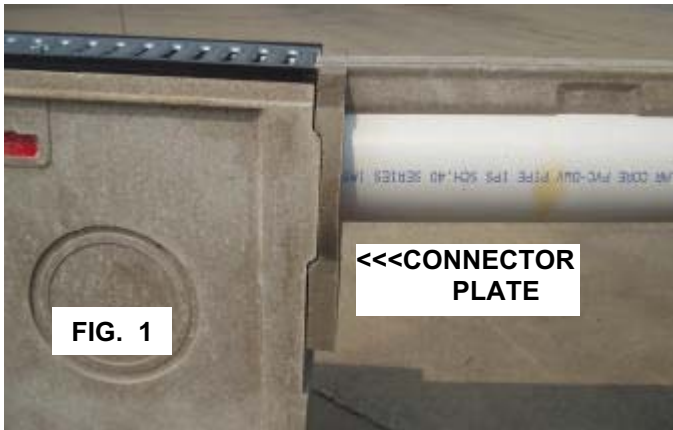
1. Lay out the XT Slot Drain channels along the excavated trench to be installed



2. Start at one end of either straight-away (beginning of the track radius) and set the first XT900 SportsEdge in line catch basin. Before permanently setting catch basins, it is important to cut or drill out the necessary size hole for the outlet pipe in the catch basin sidewall as indicated on the project design drawings. This can be done using a diamond tipped hole saw, or 3/8" masonry drill bit. When using masonry drill bit, drill holes around the circumference at 3/4" centers and tap out the remaining fins of polymer concrete with a cold chisel.

****Note:**

For applications where the XT slot drain system is combined with the PRO channel drain system, utilize the **connector plate** at the pro catch basin (see fig. 1) to accept the XT slot drain. Use the same technique to accommodate the PRO channel directly (see fig. 2) to the XT slot drain.



This connector plate is NOT REQUIRED when the XT Slot Drain is used with XT catch basins. See Fig. 3



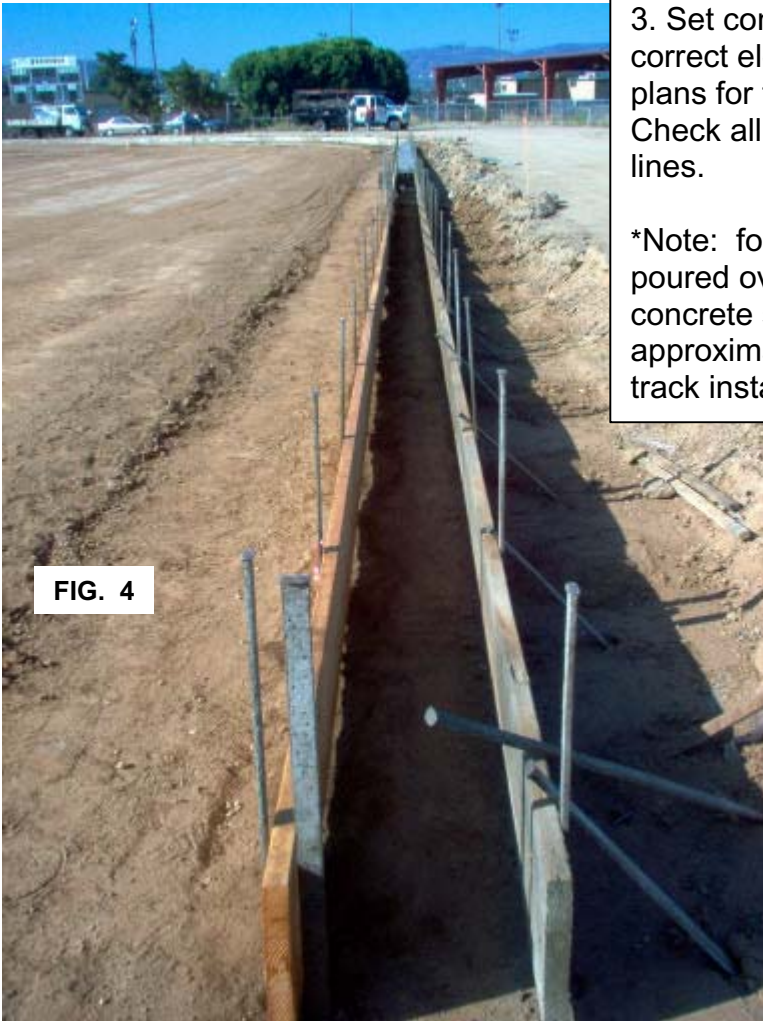


FIG. 4

3. Set concrete forms on both sides of the drain to the correct elevation. This elevation is per architectural plans for the top of the finished concrete encasement. Check all elevations using a laser level and string lines.

*Note: for applications where the track surface is poured over the concrete encasement and polymer concrete slot, the finished elevation will be lowered by approximately 0.5" or 12.7mm. Please check with the track installer for the exact depth of the track surface.

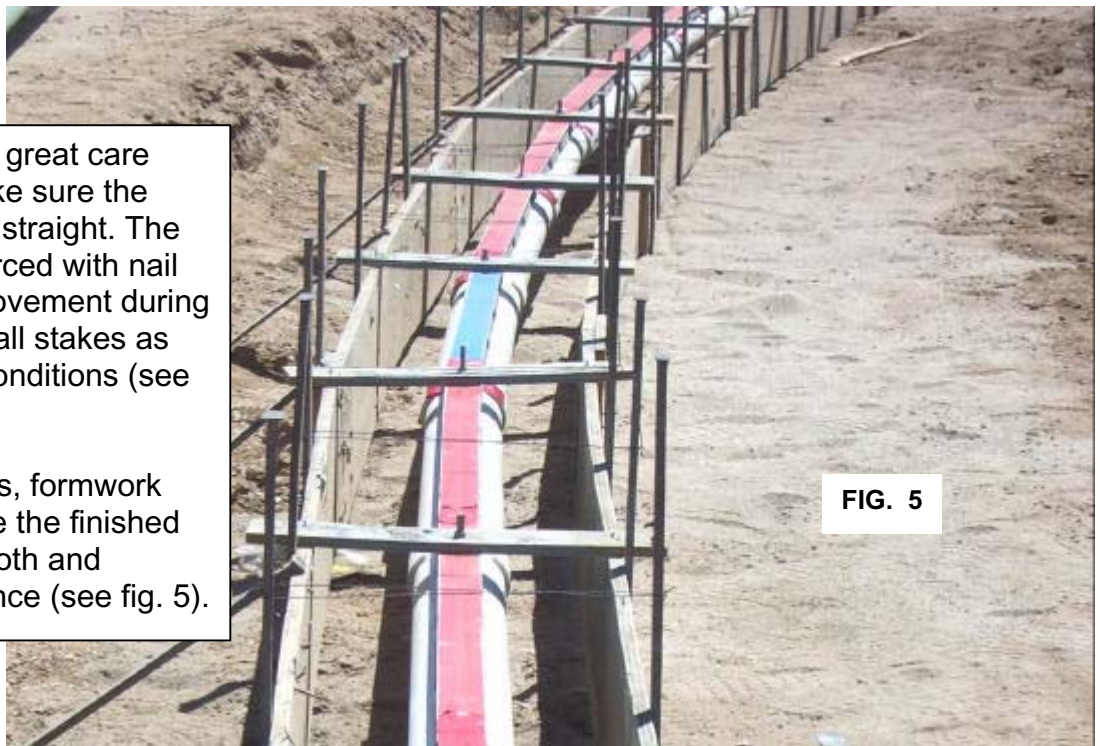
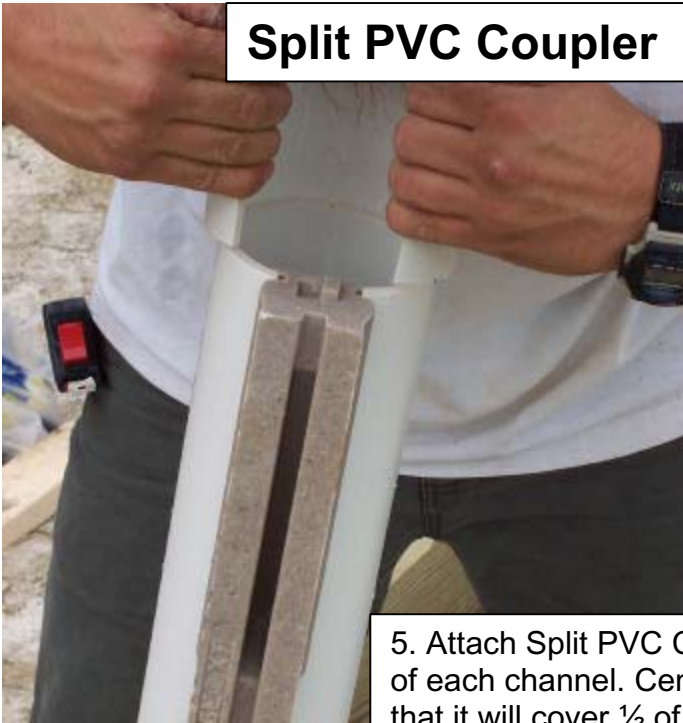


FIG. 5

4. In the straight away, great care should be taken to make sure the concrete forms are set straight. The forms should be reinforced with nail stakes to ensure no movement during the concrete pour. Install stakes as required by local soil conditions (see fig. 4).

Similarly in the radiuses, formwork should be set to ensure the finished concrete radius is smooth and continuous in appearance (see fig. 5).

Split PVC Coupler



5. Attach Split PVC Coupler to one end of each channel. Center the coupler so that it will cover $\frac{1}{2}$ of each channel.



6. Drill (or use pre-drilled boards) two $\frac{3}{8}$ " holes through the 2 x 6 suspension lumber approximately $\frac{3}{4}$ " in from each side.
At the joint of 2 channels; Insert the eye bolts through the holes and the attach washer and nut. Each bolt should insert into a separate channel.

*Note: Sportsedge recommends installation with a 2 x 6 and 2 bolts per joint; if the installer opts to install with a 2 x 4 and 1 bolt per joint, make sure that the suspension lumber and bolt is at the end of a channel, not in the middle. Installing the bolt in the middle could allow for movement at the joint and a poor installation. (FIG. 6)

Optional: Although not usually required; Joints can be sealed with silicone, or glued with PVC glue during installation.

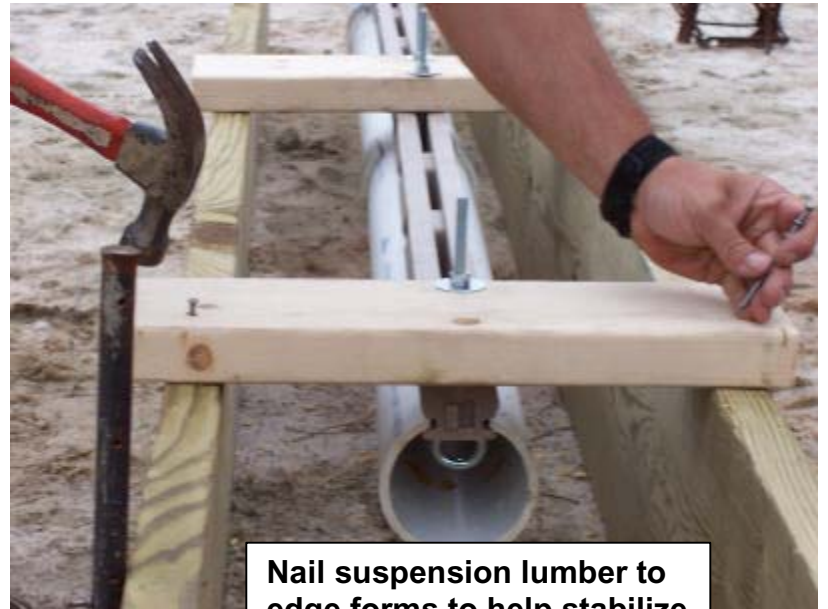


7. Eye Bolts & Suspension Lumber:
Insert Eye Bolt into slot and turn 90°. Tighten Bolt to Suspension Lumber to suspend slot channel.





8. Make sure the XT Slot Drains are set straight. The open polymer slot should remain aligned. The XT Channels are joined end to end using the tongue-in-groove connection and the Split PVC Couplings.



Nail suspension lumber to edge forms to help stabilize wood concrete forms.



Sections may also be Pre-Assembled In Longer Lengths:
EXAMPLE SHOWN: 3 Meters (9.84') Pre Assembled (51 lbs.)

9. Seal Slot to protect during the concrete pour.



10. Once the drain is set and secured; double check the location and alignment before pouring the concrete.



Note: Duct Tape will help keep sediment & debris out of XT Slot Drain during installation.

11. Pour concrete encasement. Be careful not to move the channels out of alignment during the concrete pour. Distribute concrete evenly when pouring. Float concrete flush with the polymer concrete top.



1 meter length sections for the radius mean no pre-radius pieces are required. XT Slot Drain leaves a clean, continuous, and unbroken finished appearance for typical track radiuses.



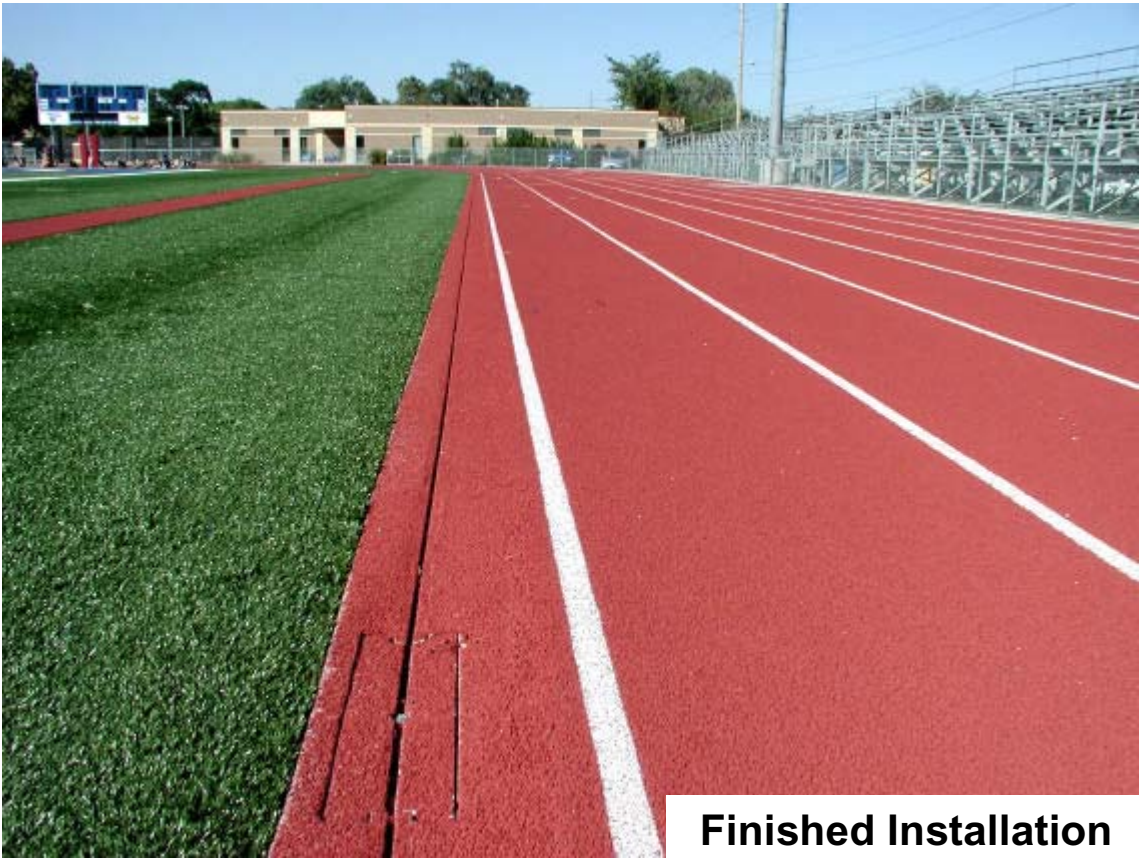
**Form & block out for
Catch Basin Covers.
The covers must remain
removable to allow for
future access.**



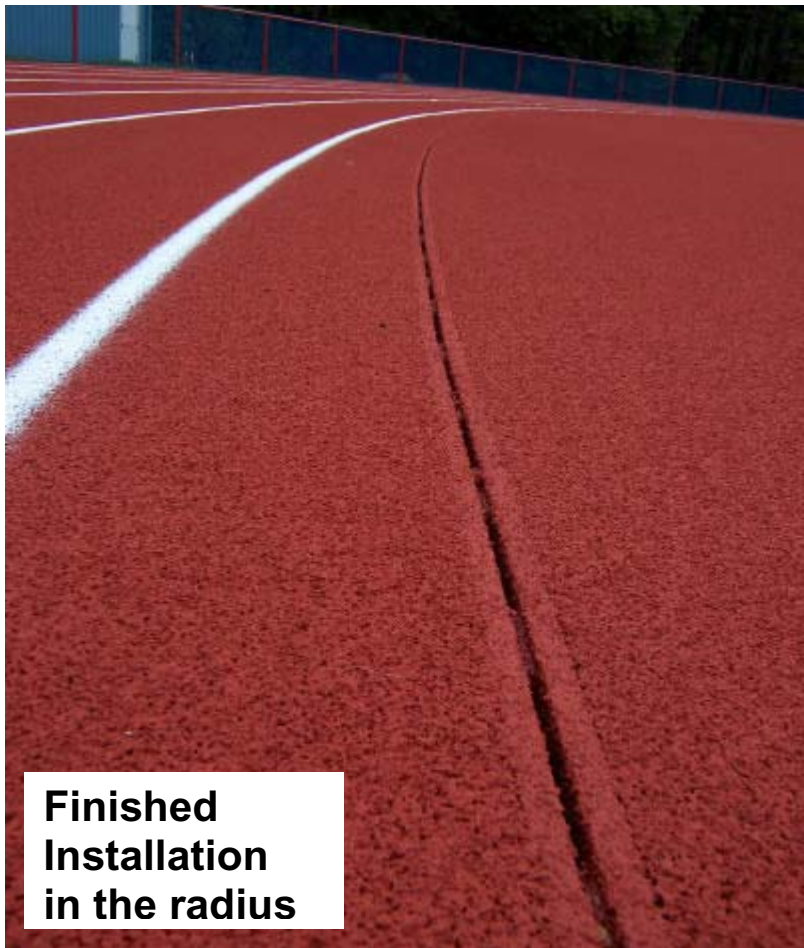
**Removable
Catch Basin
Covers use 1
locking device
per cover.**



**Full
Concrete
Encasement**



Finished Installation



**Finished
Installation
in the radius**

VARIED APPLICATIONS



INFILL TURF: A Notched Ledge for the turf is formed and poured with the drain by attaching additional lumber to the formwork.

