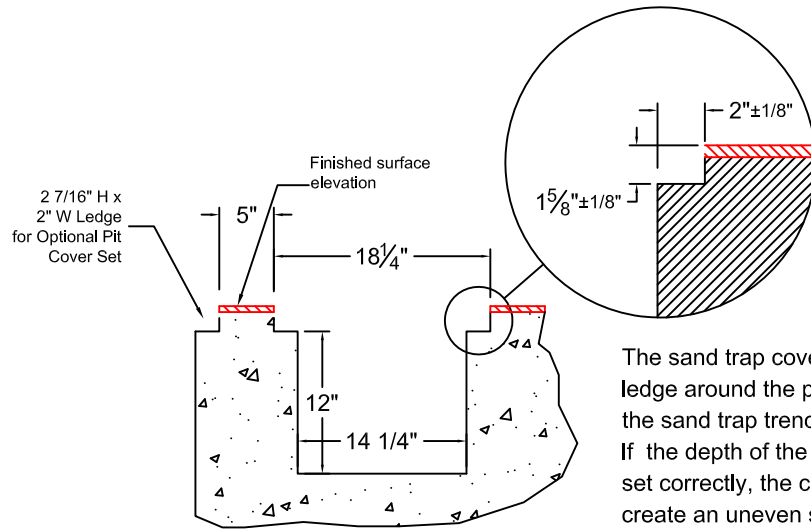
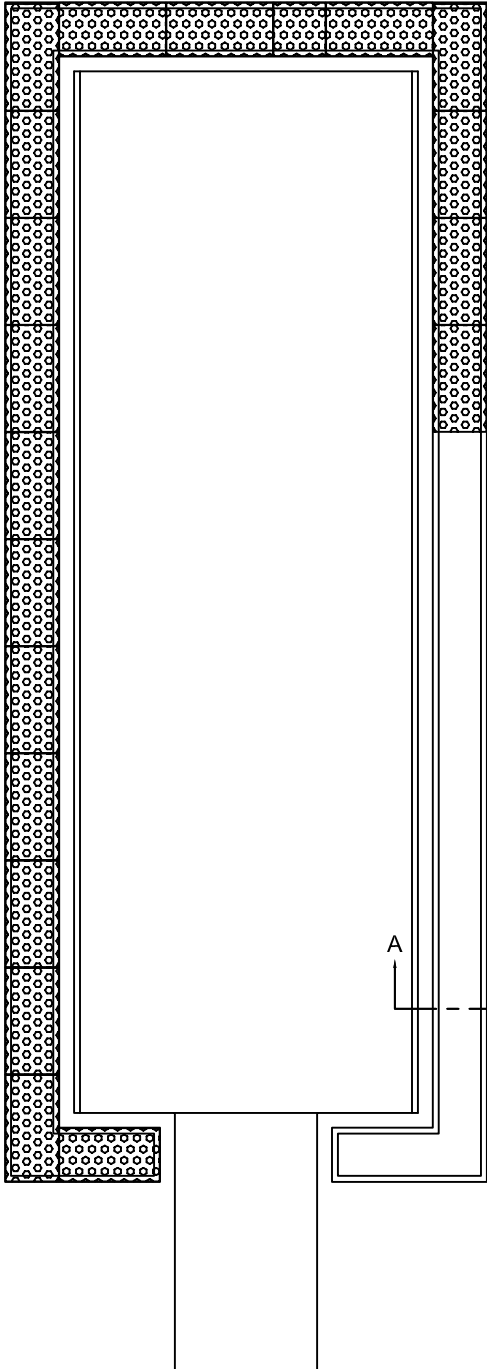


730149 - LJ / TJ SAND TRAP COVER SYSTEM SPECIFICATIONS - Cast in Place

The 730149 Long Jump & Triple Jump Sand Trap Cover is fabricated from 1" x 1/8" galvanized steel bar grating with a perforated rubber overlay. The standard unit measures 18" x 36" x 1 5/8" and lifts easily for sand removal. The sand trap covers require a ledge around the perimeter of the sand trap trench to rest on, see the detail below. This product is sold per section (18" x 36"). The installer may have to make one or more field cuts to ensure the covers properly fit the customer's sand trap trench.

The installer may be required to make field cuts

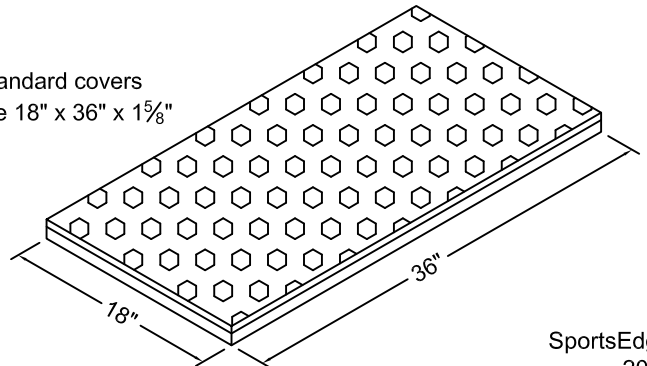
Example of a LJ sand pit with a sand trap and sand trap covers



Section A-A
Recommended trench profile

The sand trap covers require a ledge around the perimeter of the sand trap trench to rest on. If the depth of the ledge is not set correctly, the covers may create an uneven surface. The width of the opening and ledge must be such that the grating will fit into the opening but not fall into the trench.

Standard covers are 18" x 36" x 1 5/8"



SportsEdge
2011
730149.2

Proprietary rights of ABT, Inc. are included in the information disclosed herein. The recipient, by accepting this document, agrees that neither this document nor the information disclosed herein nor any part thereof shall be copied, reproduced or transferred to others for manufacturing or for any other purpose except as specifically authorized in writing by ABT, Inc..

SportsEdge
A Division of ABT, Inc.
P.O. Box 837 * 259 Murdock Road
Troutman, NC 28166
800-334-6057

TITLE: Sand Trap Cover

DRAWN BY:
SCALE: NONE

CHECKED BY:
DATE: 2011

DRAWING NUMBER:
A- 730149.2

DISCLAIMER: The customer and the customer's architects, engineers, consultants and other professionals are completely responsible for the selection, installation, and maintenance of any product purchased from ABT, and EXCEPT AS EXPRESSLY PROVIDED IN ABT'S STANDARD WARRANTIES, ABT MAKES NO WARRANTY, EXPRESS OR IMPLIED, AS TO THE SUITABILITY, DESIGN, MERCHANTABILITY, OR FITNESS OF THE PRODUCT FOR CUSTOMER'S APPLICATION. Copies of ABT's standard warranties are available upon request.