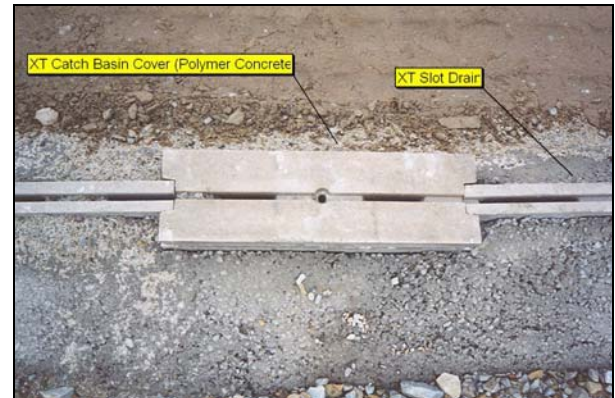




OPTIONAL "SADDLE" INSTALLATION METHOD

Installation Notes for SportsEdge® XT Slot Drain:

1. Start at one end of one of the track straight-aways (beginning of the track radius) and set the first XT900 SportsEdge in line catch basin. *Before permanently setting catch basins, it is important to cut or drill out the necessary size hole for the outlet pipe in the catch basin sidewall as indicated on the project design drawings. This can be done using a diamond tipped hole saw, or 3/8" masonry drill bit. When using masonry drill bit, drill holes at 3/4" centers and tap out the remaining fins of polymer concrete with a cold chisel.



***NOTE: FOR THOSE APPLICATIONS WHERE THE XT SLOT DRAIN SYSTEM IS COMBINED WITH THE PRO CHANNEL DRAIN SYSTEM, UTILIZE THE XT / PRO CONNECTOR AT THE PRO CATCH BASIN (See Fig. 1) TO ACCEPT THE XT SLOT DRAIN. USE THE SAME TECHNIQUE TO ACCOMMODATE THE PRO CHANNEL DIRECTLY (See Fig. 2) TO THE XT SLOT DRAIN.**

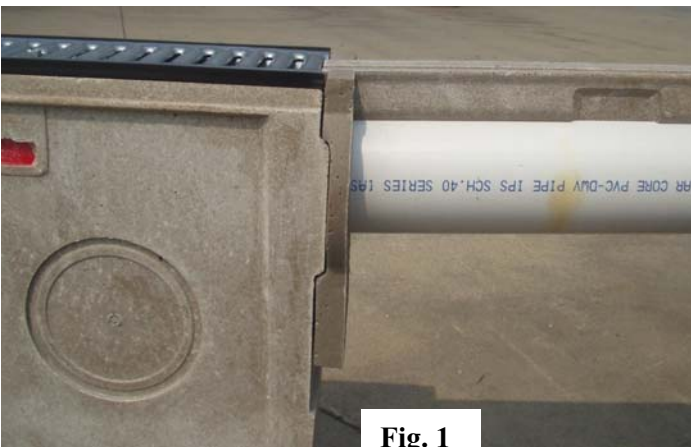


Fig. 1



Fig. 2

2. For the straight-aways; set a string line at a 12" offset to the trackside of the XT Slot Drain. This can be used frequently when setting to make sure the XT Slot Drains are set straight. The open polymer slot should remain aligned if the XT Channels are joined end to end in the XT Channel Saddle using the tongue-in-groove connection.

3. Cut a 2x4 (or other measuring device) to the exact length of the SportsEdge XT channels to be used to locate the position of each brick at the channel joint.

4. Use a stiff mix of mortar.

5. Make sure the concrete brick is set in the mortar so the 8" length is running perpendicular to the 1-meter length channels. The XT Channel Saddle should rest easily on the 4" wide brick.

6. Make sure that the brick is set in the correct location and is level and plumb. The top of the brick should be at an elevation equal to finished grade minus 6.9375" or 189mm.

***NOTE: FOR APPLICATIONS WHERE THE TRACK SURFACE IS POURED OVER THE POLYMER CONCRETE AND UP TO THE XT SLOT EDGE, THE ELEVATION WILL BE LOWERED BY APPROXIMATELY 0.5" OR 12.7mm. PLEASE CHECK WITH THE TRACK INSTALLER FOR THE EXACT DEPTH OF THE TRACK SURFACE.**

7. Set the concrete bricks and mortar approximately 20-25 at a time. Once the mortar has stiffened, come back and begin to set the channels, repeatedly checking the location and elevation of the channels.

****IMPORTANT: WHEN JOINING XT CHANNELS IN XT CHANNEL SADDLE, SPORTSEGE RECOMMENDS THAT A BEAD OF SEALANT BE APPLIED TO THE XT CHANNEL JOINT. (See Fig.3)** This will help maintain a water resistant seal in addition the XT Channel Saddle, and with the full concrete encasement.

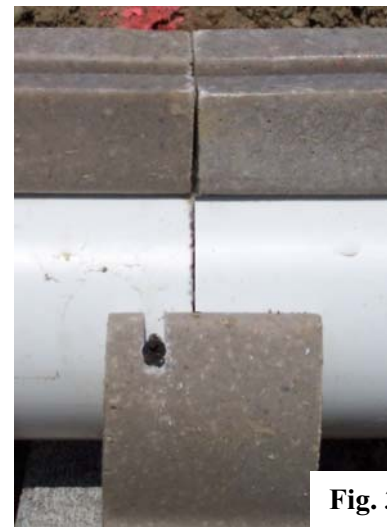
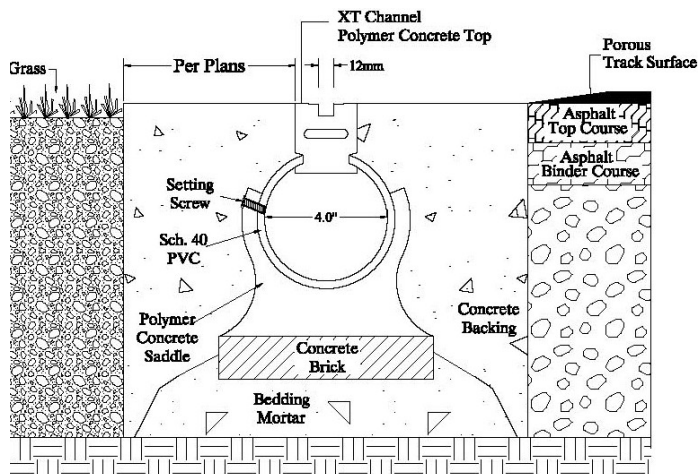


Fig. 3

8. After a channel has been set in the correct location, drill a set screw through the opening in the XT Channel Saddle into the 4" PVC pipe to keep the drain straight, level and plumb for the final concrete pour. Shovel additional mortar up against the XT Channel Saddle at the joint to lock in place until the final concrete pour.

9. When setting brick and channel locations around the radius, it is recommended to use a steel tape from the radius pin. Make sure the radius is free of obstructions. Attach the end of the steel tape to the radius pin if possible. See the plans for the radius measurements. Always use the same location on each channel as a measuring point from the radius pin to insure a constant and correct distance of the XT Channel around the radius of the track.

Install FORM BOARDS for a flush curb installation at this time.

FOR FINAL CONCRETE POUR:

10. Cut a 4" PVC pipe in half lengthways. Use the half circle piece of pipe on top of the drain channel to distribute the concrete evenly on both sides, and to keep concrete and debris out of the slot drain during the concrete pour. Use hand floats to finish the concrete up to the appropriate elevation as defined by the drawings and / or specifications.

****IMPORTANT NOTE: AS NOTED EARLIER FOR APPLICATIONS WHERE THE TRACK SURFACE IS POURED OVER THE POLYMER CONCRETE SLOT, THE CONCRETE WILL HAVE TO BE POURED TO A HIGHER ELEVATION ON THE XT CHANNEL DRAIN SYSTEM SO THAT THE FINISHED TRACK SURFACE IS ABLE TO BE POURED UP TO THE XT CHANNEL SLOT.**

Continue around the track by sliding the pipe along as you go. This will help to keep the channels from being knocked out of line, help to keep the slot clean, and speed up the installation.

Additional Notes:

- 1. BE SURE TO COMPLETELY CONSOLIDATE THE CONCRETE UNDER THE XT CHANNEL AND SADDLE.**
- 2. FOR APPLICATIONS WHERE THE TRACK SURFACE MUST BE POURED OR ROLLED TO THE EDGE OF THE XT DRAIN SLOT, IT IS RECOMMENDED THAT A BACKER ROD OR OTHER FILLER MATERIAL BE PLACED IN THE SLOT TO ENSURE THAT THE SLOT REMAINS CLEAR OF TRACK MATERIAL. TO MINIMIZE THE IMPACT ON THE TRACK SURFACE IT IS SUGGESTED THAT A SHARP UTILITY KNIFE OR RAZOR BLADE BE USED TO REMOVE THE BACKER ROD MATERIAL ONCE THE TRACK MATERIAL HAS SET.**
- 3. DOUBLE CHECK THE CHANNEL LOCATIONS BEFORE THE FINAL CONCRETE POUR.**
- 4. KEEP THE POLYMER CONCRETE SLOT PROTECTED AND CLEAN.**