



SportsEdge® PowerHouse Batting Cage System Instructions

Installing the Structural Poles



Before you dig, call the locating service in your area to locate any existing power, water, cable or other utility lines in the area where you'll dig holes for the structural poles.

Using your batting cage netting footprint (top down view) size (i.e. 12' x 70'), apply the following formulas to determine the location of the four (4) structural poles:

Structural pole width (center-to-center) = Width of net + two to six inches, no less

Structural pole length (center-to-center) = Length of net + 5 feet (+/- one to two feet)

Dig holes 4.5' feet deep, and at least 18" in diameter at the four locations. Stand the poles up in the holes, making sure that the center-to-center dimensions are still accurate. Also, line up the holes at the top of each pole line up with the corresponding poles across and at the end of the cage. upper holes at the top are to the outs. When you're satisfied, plumb and brace the poles to prepare for the concrete. You should use 2500 lb. PSI (minimum) concrete to fill each hole. Let cure a minimum of 3-5 days.

Installing the Cables

You will need a section of cable for each run between the structural poles, and one that will run down the center on the long dimension. This ensures that each cable can be individually tensioned as needed, without unnecessary stress on the hardware.

Using the diagram on the following page, install the hardware as shown. Make sure to orient the hardware so the thimble eye nuts are towards the inside of the cage. After threading the cable through one thimble eye, loop the end back onto itself and secure using a minimum of three (3) cable clamps. Insert the threaded rod into the thimble eye nut until the end is flush with the inside of the eye. Then slide the other end of the rod through the appropriate hole at the top of the structural pole. Install curved washer and nut as shown, but leave loose so you have at least 6" of exposed threaded rod to the inside of the cage.

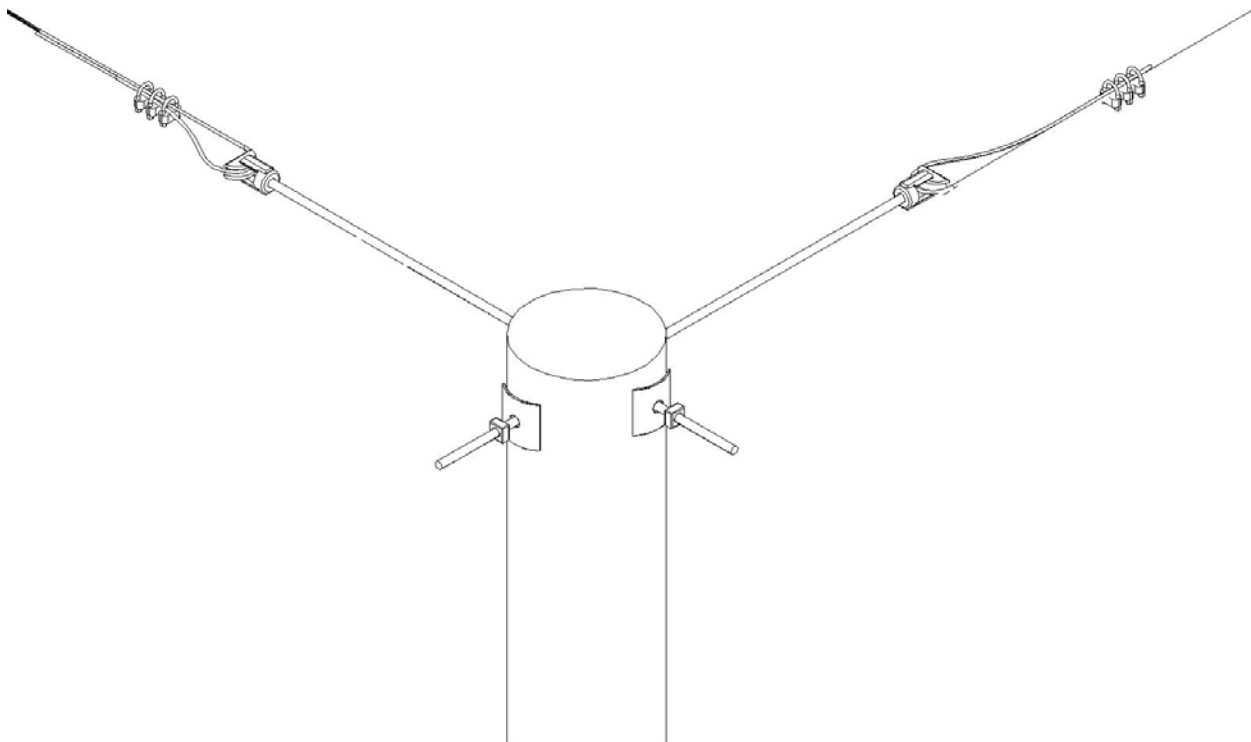
Repeat the process above until you have two longer runs and one shorter run completed. Now cut one more section of cable for the center, using this formula:

Length of center cable = length of netting + 6'

(cont.)

Loop one end around the shorter cable run at the one end of the back on to itself and fasten in the same fashion using three (3) cable clamps. You can use one more cable clamp on either side of the loop to keep it from sliding, however once all the cables are installed and tensioned, it will most likely be unnecessary. At the opposite end, make another loop – making sure that the “outside of eye to outside of eye” measurement is equal to the length of the netting.

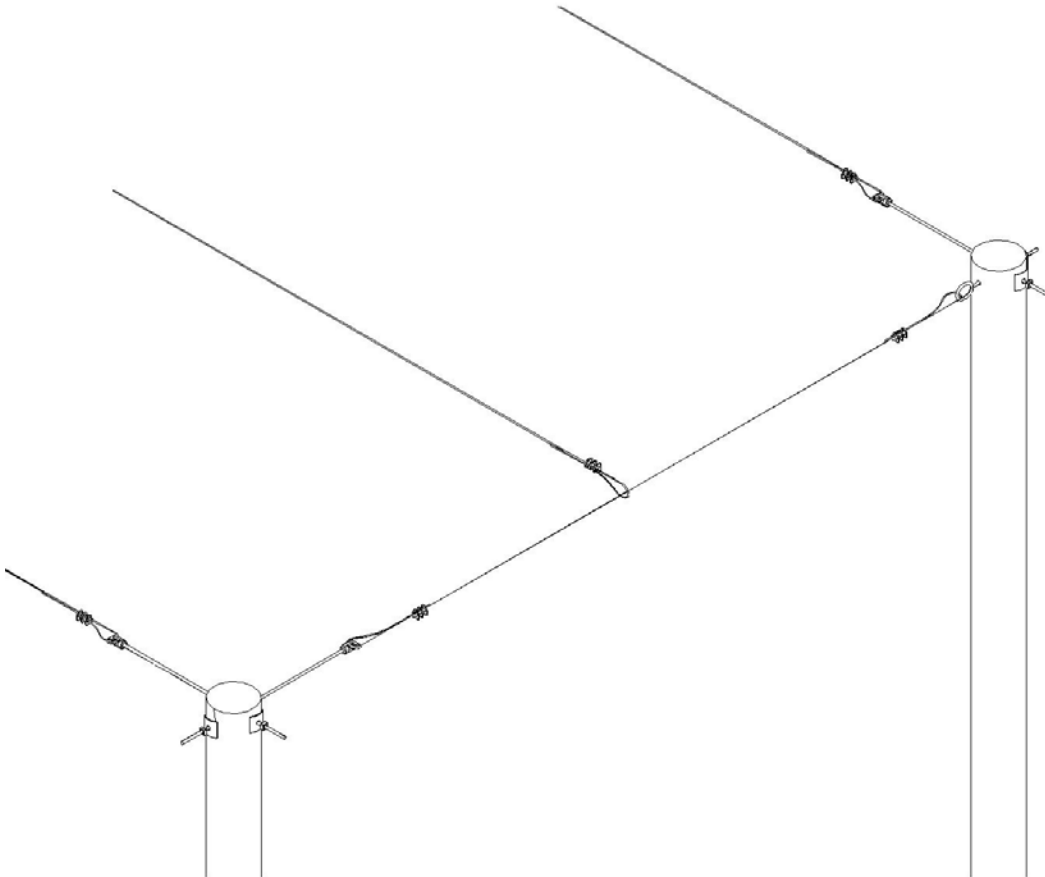
Illustration ‘A’ – Cable installation Detail



Now install the final end cable run, making sure to feed the cable through the loop on the end of the long center cable. Again, loop through the thimble and loop back onto itself, using three (3) cable clamps as before.

(cont.)

Illustration 'B' – Completed cable installation (one end shown)



Tensioning the Cables

Now start to tighten the nuts on the outside, working evenly from side-to-side, and end-to-end. You will not need to adjust the center cable, as tensioning the other cables will draw it tight.



Hanging the Net

Lay out the netting roughly under where the cables are. Lift the upper perimeter rope border to the cables, and fasten using the provided snap clips. You should install these clips approximately 2-3' apart. Also connect the upper center rope on the cage to the center cable. Once the net is completely suspended, locate the lower corner tails, and pull each corner towards the poles and tie off just tight enough to help the netting relax and assume its shape. You can adjust these as needed.

Bill of Materials

<u>Qty</u>	<u>Description</u>
4	16' x 8-5/8" O.D. Structural Steel Poles
1	300' Roll 3/16" Galvanized Aircraft Cable
4	5/8" x 36" Galvanized All-Thread (Threaded Rod)
4	Galvanized Threaded Thimble Eye Nuts
4	5/8" x 14" Cast Oval eye Bolts
8	Galvanized Curved Washers
8	5/8" Galvanized Nuts
40	3/16" Cable Clamps
1	½ gallon black touch-up paint
1	Batting Cage Net – 4.0mm Knotless Square Hung – size specified by customer