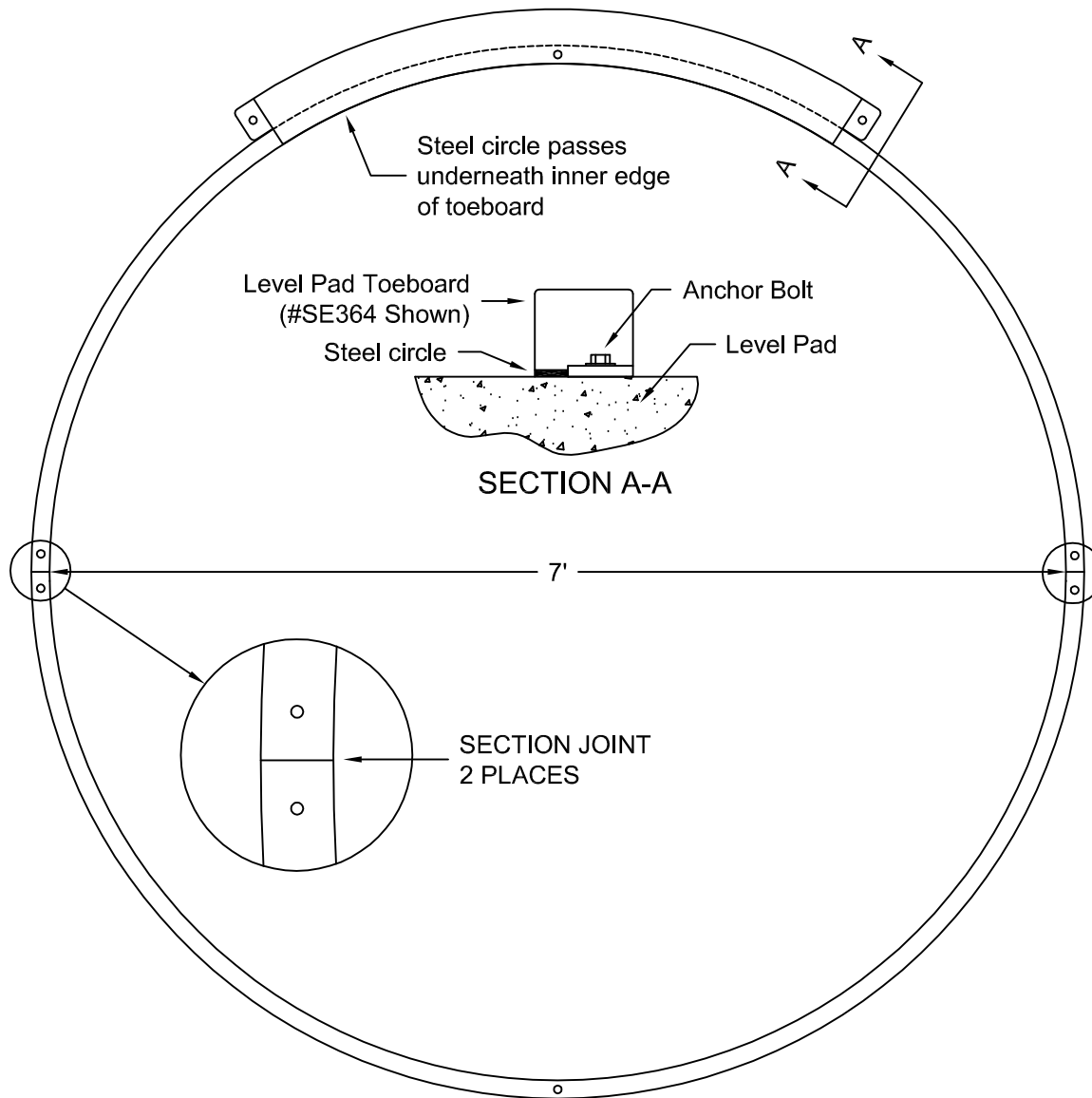


SE373 - STEEL SHOT CIRCLE

SPECIFICATIONS

The SE373 Steel Shot Circle consists of two flat segments that are installed end to end to form a 7 ft. circle. Each segment is roll bent out of 1/4" x 1 1/2" steel strip to a radius of 42". This product is designed to be bolted to the surface of a new or existing level pad. Mounting holes are drilled at the ends and center of each segment for 1/4" anchors. This circle is compliant with NFSHSA specifications for high schools.



NOTE: When used as a shot circle, a SE360 Wood Toeboard, a SE361 Fiberglass Toeboard, or a SE364 Aluminum Toeboard (shown above) is required. Toeboards are sold separately.

NOTICE: All installations should be conducted by experienced contractors and in accord with all applicable codes, laws and regulations. Suggested instructions herein are illustrative only and should be adapted to suit local requirements. SportsEdge is not responsible for the manner in which these products are installed.

Proprietary rights of ABT, Inc. are included in the information disclosed herein. The recipient, by accepting this document, agrees that neither this document nor the information disclosed herein nor any part thereof shall be copied, reproduced or transferred to others for manufacturing or for any other purpose except as specifically authorized in writing by ABT, Inc..

SportsEdge A Division of ABT, Inc. P.O. Box 837 * 259 Murdock Road Troutman, NC 28166 800-334-6057	TITLE: SE373 Steel Shot Circle		
	DRAWN BY: M.D.H.	CHECKED BY:	DRAWING NUMBER: SE373-1
	SCALE: NONE	DATE: 3/17/04	A-
<small>DISCLAIMER: The customer and the customer's architects, engineers, consultants and other professionals are completely responsible for the selection, installation, and maintenance of any product purchased from ABT, and EXCEPT AS EXPRESSLY PROVIDED IN ABT'S STANDARD WARRANTIES, ABT MAKES NO WARRANTY, EXPRESS OR IMPLIED, AS TO THE SUITABILITY, DESIGN, MERCHANTABILITY, OR FITNESS OF THE PRODUCT FOR CUSTOMER'S APPLICATION. Copies of ABT's standard warranties are available upon request.</small>			