

Optional Blanking lid - 1/8" metal sheet with user's track surface installed. Useful for field house applications.

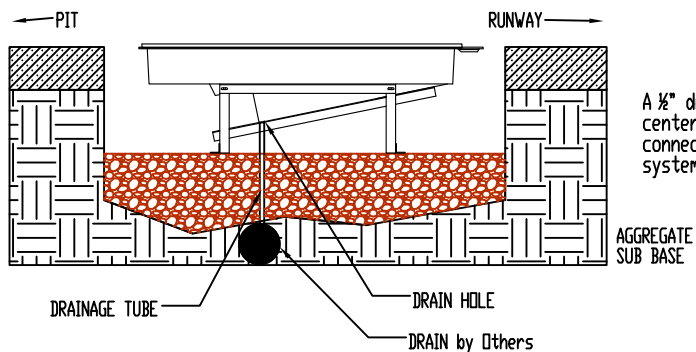
Lid track surface - installed by user to match surrounding surface.

Cover - 1/8" HMWPE molded sheet. Holds lid track surface in place.

Skydex material eliminates the need for a box collar.

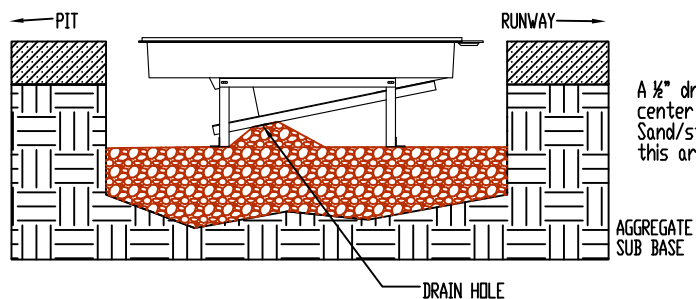
Tray with support structure - molded fiberglass with steel supports. Improved stability for easier installation.

IMAGE 1

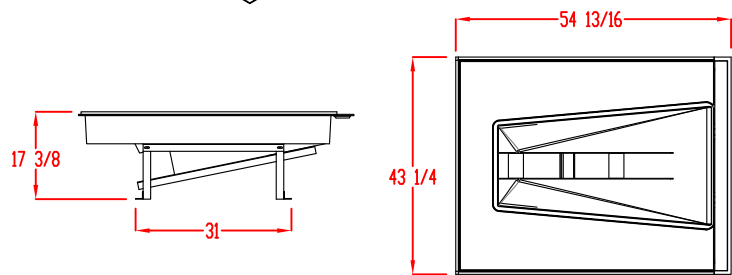


A 1/2" drain hole may be drilled in the bottom center section of the fiberglass tray. It can be connected by a tube to the site drainage system.

IMAGE 2

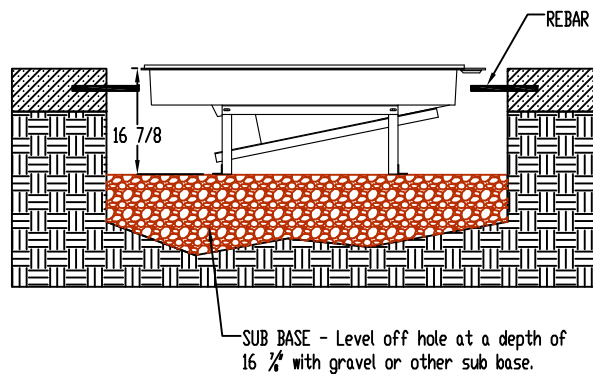


A 1/2" drain hole may be drilled in the bottom center section of the fiberglass tray. Sand/stone/gravel should be piled up around this area so the tray can drain into the ground.



SKYDEX™ POLE VAULT BOX

as supplied by SportsEdge®



SUB BASE - Level off hole at a depth of 16 7/8" with gravel or other sub base.

11/23/2011
507_spec

SportsEdge

A Division of ABT, Inc.
P.O. Box 837 * 259 Murdock Road
Troutman, NC 28166
800-334-6057

TITLE: SKYDEX™ POLE VAULT BOX

DRAWN BY:

CHECKED BY:

DRAWING NUMBER:

SCALE: NONE

DATE: 2011

A-

SE507-1

Proprietary rights of ABT, Inc. are included in the information disclosed herein. The recipient, by accepting this document, agrees that neither this document nor the information disclosed herein nor any part thereof shall be copied, reproduced or transferred to others for manufacturing or for any other purpose except as specifically authorized in writing by ABT, Inc..

DISCLAIMER: The customer and the customer's architects, engineers, consultants and other professionals are completely responsible for the selection, installation, and maintenance of any product purchased from ABT, and EXCEPT AS EXPRESSLY PROVIDED IN ABT'S STANDARD WARRANTIES, ABT MAKES NO WARRANTY, EXPRESS OR IMPLIED, AS TO THE SUITABILITY, DESIGN, MERCHANTABILITY, OR FITNESS OF THE PRODUCT FOR CUSTOMER'S APPLICATION. Copies of ABT's standard warranties are available upon request.