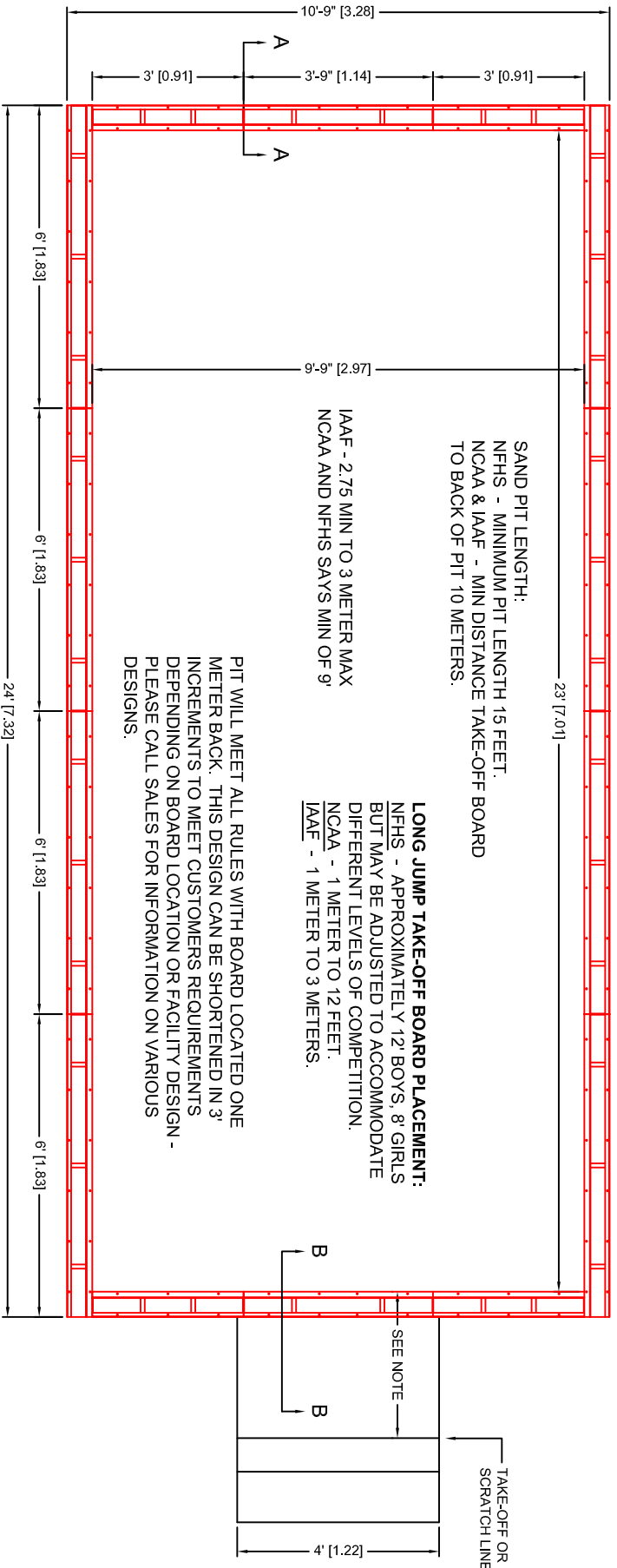


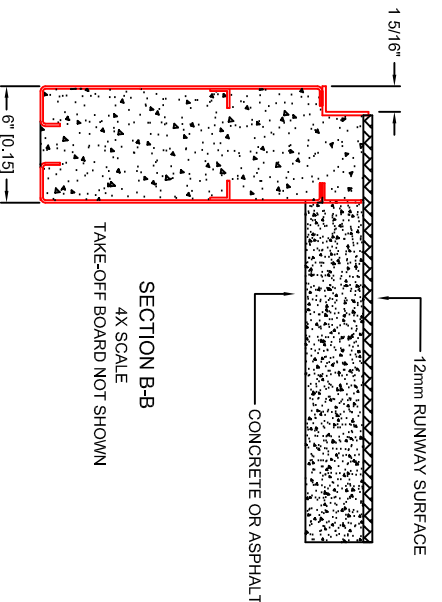
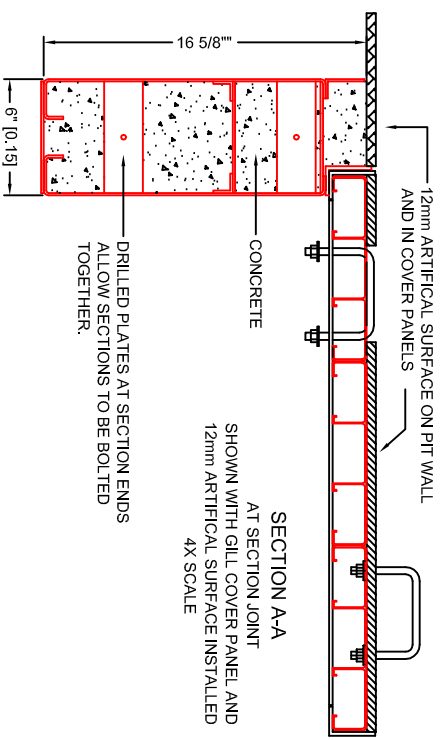
SEFF420HS, BASIC 23' LONG JUMP PIT FORM, IS SHOWN HERE. THE SEFF420 IS 6 FEET LONGER



SAND PIT LENGTH:
 NFHS - MINIMUM PIT LENGTH 15 FEET.
 NCAA & IAAF - MIN DISTANCE TAKE-OFF BOARD TO BACK OF PIT 10 METERS.

LONG JUMP TAKE-OFF BOARD PLACEMENT:
 NFHS - APPROXIMATELY 12' BOYS, 8' GIRLS BUT MAY BE ADJUSTED TO ACCOMMODATE DIFFERENT LEVELS OF COMPETITION.
 NCAA - 1 METER TO 12 FEET.
 IAAF - 1 METER TO 3 METERS.

PIT WILL MEET ALL RULES WITH BOARD LOCATED ONE METER BACK. THIS DESIGN CAN BE SHORTENED IN 3' INCREMENTS TO MEET CUSTOMERS REQUIREMENTS. DEPENDING ON BOARD LOCATION OR FACILITY DESIGN - PLEASE CALL SALES FOR INFORMATION ON VARIOUS DESIGNS.



Proprietary rights of ABT, Inc. are included in the information disclosed herein. The recipient, by accepting this document, agrees that neither this document nor the information disclosed herein nor any part thereof shall be copied, reproduced or transferred to others for manufacturing or for any other purpose except as specifically authorized in writing by ABT, Inc..

| | | | |
|--|-----------------------------|--|--|
| <p>SportsEdge A Division of ABT, Inc. P.O. Box 837 * 259 Wurdock Road Troutman, NC 28166 800-334-6057</p> | | <p>TITLE: 3M x 7M Sand Pit w/ Cover Ledge</p> | |
| | | <p>DRAWN BY: M.D.H.</p> | <p>CHECKED BY:</p> |
| <p>SCALE: NONE</p> | <p>DATE: 5/05/04</p> | <p>DRAWING NUMBER: SEFF420HS</p> | <p>DISCLAIMER: The customer and the customer's architects, engineers, consultants and other professionals are completely responsible for the selection, installation, and maintenance of any product purchased from ABT, Inc. and EXCEPT AS EXPRESSLY PROVIDED IN A BIDS STANDARD WARRANTIES, ABT MAKES NO WARRANTY, EXPRESS OR IMPLIED, AS TO THE SUITABILITY, DESIGN, MERCHANTABILITY, OR FITNESS OF THE PRODUCT FOR CUSTOMERS APPLICATION. Copies of ABT's standard warranties are available upon request.</p> |