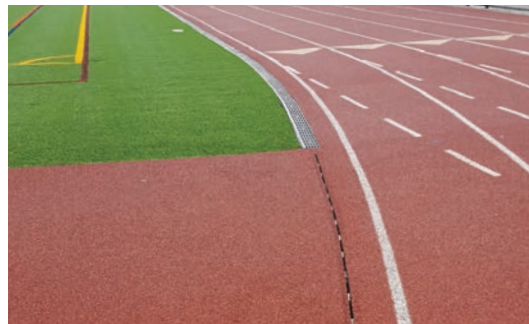


Stormwater Management

TERMINATOR SYSTEM • XT SLOT DRAIN • PRO-S CHANNEL DRAIN • HQ PANEL DRAIN
PROTECT CHANNEL DRAIN • POLYDRAIN • TRENCHFORMER • PERMAVOID



STORMWATER MANAGEMENT

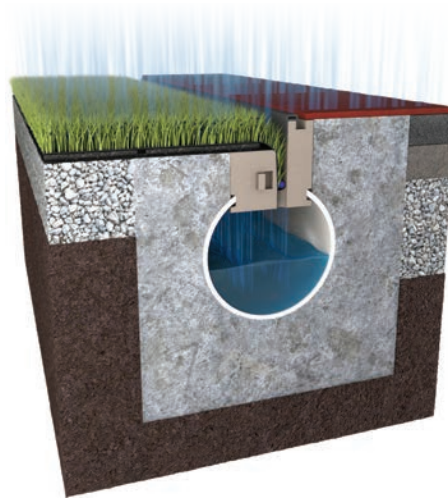


SportsEdge, together with our parent company ABT, Inc., has been providing drainage solutions for athletic fields for over 30 years. The changing environment of stormwater management worldwide has led SportsEdge to a more holistic approach. We now offer products that help close the circle of capture, treatment, storage, slow release and reuse.

TERMINATOR

Terminator® is the next generation in edge drain design for synthetic turf fields and tracks. Unlike other edge drains, the Terminator System offers the flexibility to drain athletic fields and tracks in several ways, depending on the application and site conditions. The multi-functional system provides a track drain, a field drain and a synthetic turf anchor — all-in-one structure. The Terminator System is the faster, easier and smarter way to drain synthetic turf fields and tracks. And it's the highest capacity sports drain in the industry.

Sites with poorly draining or contaminated soils can be managed with a completely self-contained drainage envelope for ALL of the storm water on a track and synthetic turf field when employed with a draining shock pad. All storm water collection takes place just below the field surface and poorly draining soils are isolated.



In traditional vertical drainage Terminator replaces the grated or slot drain as the track drainage system. It also adds an “insurance policy” for the field drainage, providing a back-up to panel drains and stone during large rainfall events. Thirdly, it provides an attachment point for the turf thereby eliminating a separate turf nailer. Terminator offers a safe, clean edge detail with no grating, no visible hardware and no potential tripping hazards.

TERMINATOR



XT SLOT DRAIN

XT Slot Drain System, a hybrid of polymer concrete and PVC pipe, is an innovative and affordable solution to traditional grated drains. The XT-4 is mated with a 100mm diameter PVC pipe and the XT-6 uses a 150mm pipe for higher capacity applications.

This versatile and economical drain system has a maximum 50mm wide exposed surface with a continuous 12mm, ADA compliant drain slot. Hundreds of miles of XT has been installed since its inception in 1998.



XT SLOT DRAIN

PRO-S CHANNEL DRAIN

SportsEdge **Pro-S Channel Drain System** is designed for track drainage, tennis court drainage and other athletic field surface drainage applications. Pro-S is manufactured from durable polymer concrete. Polymer concrete allows no absorption so it is resistant to freeze-thaw cycles and is highly UV resistant. These properties make it an ideal material for outdoor environmental conditions.

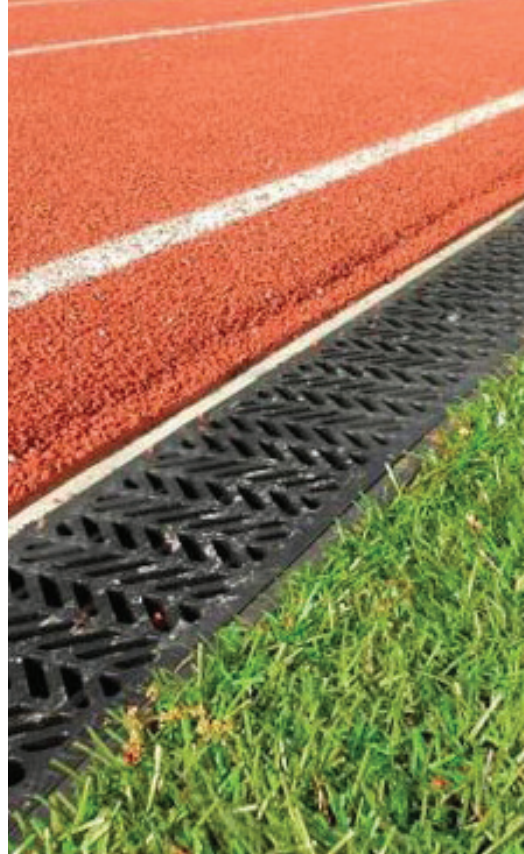
SportsEdge Pro-S drainage channels feature a radius non-sloping bottom, smooth interior surface, interlocking tongue and groove ends and the patented "Red Dot" grate locking system. Grate system options vary from thermoplastic to galvanized steel slotted to ductile iron. All grates lock securely to the channel with a hands-free locking device.



PRO-S CHANNEL DRAIN

PROTECT CHANNEL

The SportsEdge **ProTect** Channel has the same shape and all of the same features of the Pro-S. The one difference is that the grate seat portion at the top of the channel is replaced with a rubber composite material. The portion of the channel at the top that would normally be exposed is now a safe, resilient shape. The rubber edge can be provided on one or both sides of the channel. This can be advantageous on natural grass fields employing an edge drain. Athletes that fall against the channel edge are not at risk of injury that might be caused by the hard polymer concrete.



PROTECT CHANNEL

POLYDRAIN

Over the years the **PolyDrain** name has become synonymous with pre-sloped trench drain design. Applications for sports include running tracks, tennis courts, bleacher areas and bordering sports fields.

PolyDrain channels have a 0.6% built-in slope and radiused bottom. The 30 standard channels are positioned sequentially in numerical order from 010 to 300, creating a continuously sloped channel run that generates scouring velocity when running full. Full-length anchoring ribs provide a positive mechanical lock with surrounding concrete. Interlocking

tongue-and-groove joints aid in maintaining proper channel alignment during concrete placement. Catch basins, horizontal outlet plates, closed end plates and vertical outlet plate adapters can be installed at designated locations.



POLYDRAIN

TRENCHFORMER

TrenchFormer® is a pre-engineered, cast-in-place concrete forming system for forming drainage trenches. It consists of expanded polystyrene (EPS) form sections, embedded steel inlay rails with patented no-float legs, and grates. The system eliminates the need for heavy forming materials, keyways and waterstops normally required with cast-in-place trench drains. Precision is engineered into the product, eliminating the need for highly skilled and expensive labor. The former shapes have longitudinal grooves for alignment, and integral deforming grooves for easy removal. The built-in slope and radius bottom help to eliminate debris buildup.



TRENCHFORMER

The EPS forms are manufactured without CFC's and can be disposed of safely and easily.

TFX-12, a 12 inch wide trench with a 14" wide grate, is the standard stock Trench Former system. Custom sizes can be made upon request.

HQ PANEL DRAINS

SportsEdge **HQ Panel Drains** are designed to be used as a subsurface drainage system for synthetic and natural turf sports fields. With more than



HQ PANEL DRAINS

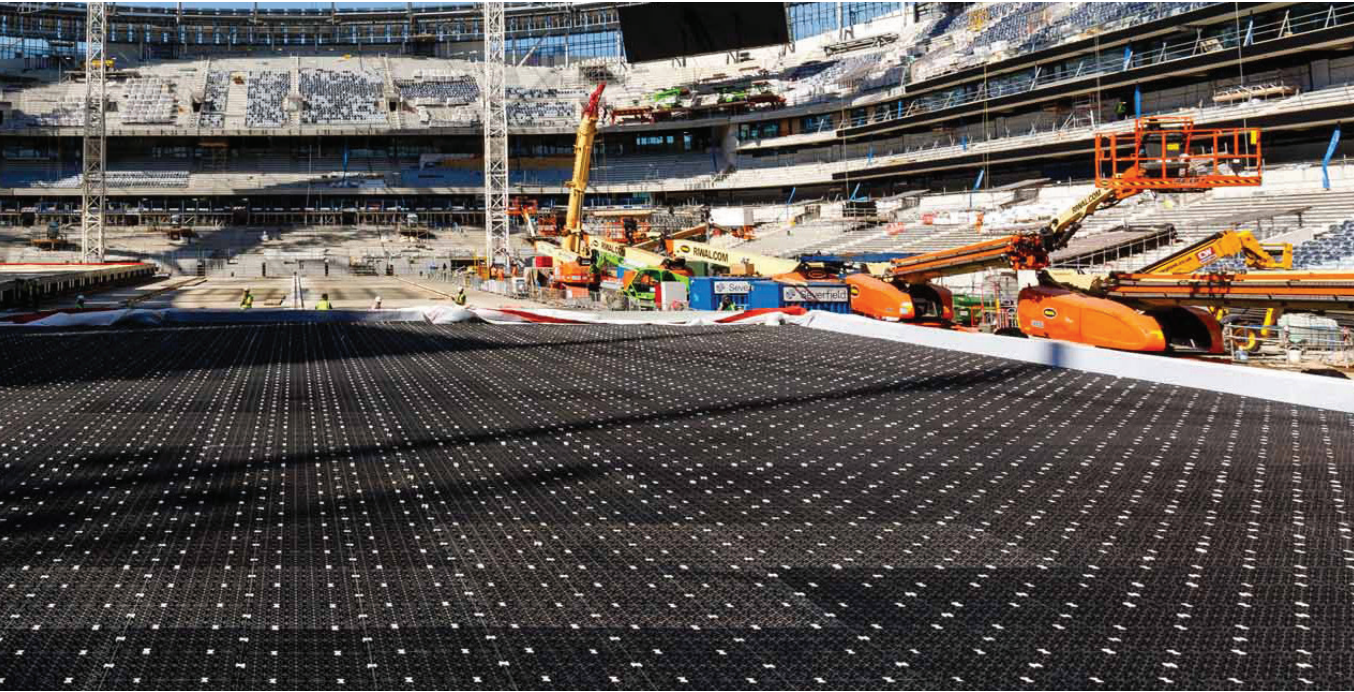
55% open area, SportsEdge HQ offers significantly higher water collection and evacuation rates than stone and perforated pipe drains. HQ panel drains consist of a formed polystyrene perforated core that is wrapped with a non-woven spun-bound polypropylene filter fabric. This high strength fabric allows water to pass freely into the core. The very smallest particles pass into the core to flow out in solution, leaving larger aggregate to stage with voids for uninterrupted drainage. The core directs stormwater to designated drainage exits.

PERMAVOID

Permavoid® stormwater management components help to facilitate compliance with The Clean Water Act with efficient and innovative products that manage stormwater at its source rather than transporting it to a downstream solution.

Source Control in stormwater management is the most effective means for meeting Low Impact Development goals. Permavoid products are designed to manage stormwater at the source allowing for simultaneous storage or controlled conveyance, helping any site to turn stormwater from a waste product into a valuable resource. The modules have a very high void ratio (95%) providing highly efficient water storage capacity.





The robust design of Permavoid utilizes proprietary recycled plastics and mechanical keys that create a patented structural sub-base for sites where subsidence, high water tables or unstable soils are an issue. Excavation and transportation of poor soils and clean aggregate is minimized...even eliminated. Permavoid can also eliminate collector pipes and all that they involve.

It's exceptionally high compressive strength and bending resistance within joints create a horizontal structural 'raft'



immediately under the playing surface that is ideal for the shallow attenuation and conveyance of stormwater. And the large surface area to depth ratio provides exceptional infiltration.

Additional drainage and treatment options, PDX, MHD, XHD, FirstFlush and PolyStorm are available and can be found at www.abtdrains.com.

VISIT WWW.SPORTSEGE.COM

We are manufacturers of stormwater management and athletic field construction equipment for outdoor sports construction. If you are designing an athletic facility, our team can supply you with all of the supporting literature, details and specifications you need.

Visit www.sportsedge.com for styles, sizes, dimensions, cross sections, contact info and more for all of our products, all in downloadable format.



Stormwater Management



Track Equipment



Field Equipment



FlexEdge™ Rubber Borders



Baseball Products



All products available in Canada and Mexico

SportsEdge®

A division of ABT, Inc.
PO Box 837
259 Murdock Road
Troutman, NC 28166
www.sportsedge.com
800.334.6057

DISCLAIMER: The customer and the customer's architects, engineers, consultants and other professionals are completely responsible for the selection, installation, and maintenance of any product purchased from ABT, and EXCEPT AS EXPRESSLY PROVIDED IN ABT'S STANDARD WARRANTIES, ABT MAKES NO WARRANTY, EXPRESS OR IMPLIED, AS TO THE SUITABILITY, DESIGN, MERCHANTABILITY, OR FITNESS OF THE PRODUCT FOR CUSTOMER'S APPLICATION. Copies of ABT's standard warranties are available upon request.

9/25/2019