

**PLAN VIEW**

SPORTSEGE® XT PROFILE CONTINUES THROUGH COVER INLET SLOT

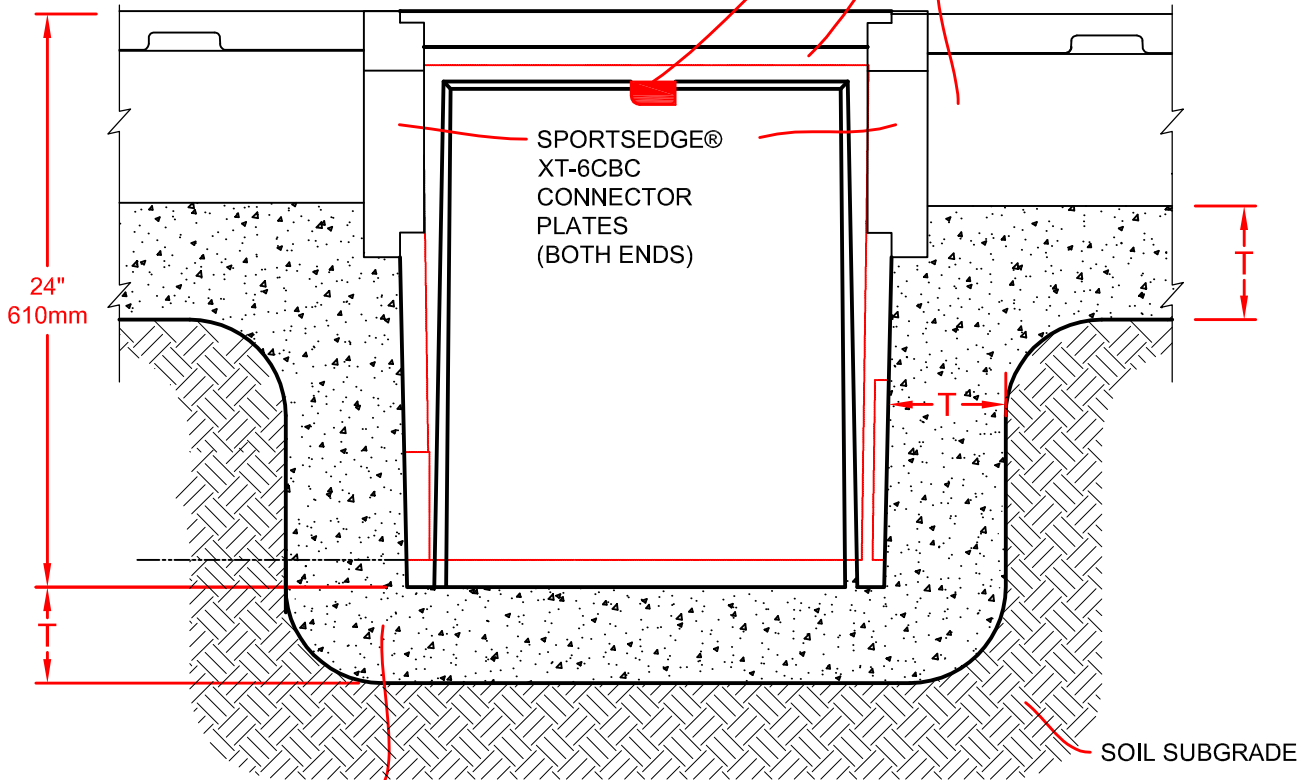
CHANNEL INTERLOCKS INTO THE SIDE OF CATCH BASIN USING XT-6CBC CONNECTOR PLATES

POLYMER CONCRETE CATCH BASIN COVER (2313XT)

RED DOT® LOCK INSERT

CATCH BASIN 2900XT-6

SPORTSEGE® XT-6



**ELEVATION VIEW**

CONCRETE ENCASEMENT

SOIL SUBGRADE

**TITLE: 2900XT-6 - 6" Slot Drain Catch Basin Product Detail**



A Division of ABT, Inc.  
P.O. Box 837 / 259 Murdock Road  
Troutman, NC 28166  
(800) 334-6057

**DRAWN BY:** B.W.M.  
**SCALE:** NONE

**CHECKED BY:** XXX  
**DATE:** 05/18/23

**DRAWING NUMBER:**  
**A- 2900XT-6**

**T = Encasement Concrete Thickness, Or 6" Or Specification (Whichever Is Greater).**

**DISCLAIMER:** The customer and the customer's architects, engineers, consultants and other professionals are completely responsible for the selection, installation, and maintenance of any product purchased from ABT, and EXCEPT AS EXPRESSLY PROVIDED IN ABT'S STANDARD WARRANTIES, ABT MAKES NO WARRANTY, EXPRESS OR IMPLIED, AS TO THE SUITABILITY, DESIGN, MERCHANTABILITY, OR FITNESS OF THE PRODUCT FOR CUSTOMER'S APPLICATION. Copies of ABT's standard warranties are available upon request.

Proprietary right of ABT, Inc. are included in the information disclosed herein. The recipient, by accepting this document, agrees that neither this document nor the information disclosed herein nor any part thereof shall be copied, reproduced or transferred to others for manufacturing or for any other purpose except as specifically authorized in writing by ABT, Inc..