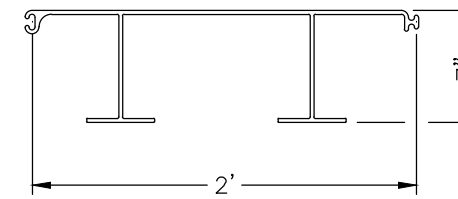


**GENERAL NOTES:**

1. The contractor shall confirm alignment of the ChampionWall with the grade shown on the contract plans.
2. Contractor shall be responsible for determining the layout and location of the cross-sections in accordance with the owner's requirements.
3. The contractor will provide quality control programs to ensure that the finished product meets the specifications
4. Overall plumbness of wall 1"/10-ft of wall height.
5. Overall plumbness of piling 1"/20' of exposed height.
6. Sufficient drainage to be designed, installed, and connected to storm water management system by others.
7. Designed for a 3-sec gust wind speed equal to 130 mph per ASCE 7-10 Risk Category I.
8. Minimum foundation size and depth is in accordance with ASTM F567.
9. All hardware shall be Hot dipped galvanized steel.
10. All pipe shall be ASTM F 1083 Schedule 40, Grade 50 ksi and hot-dipped galvanized.



FP-475CW PLAN VIEW  
SCALE: 1"=1'-0"

PRELIMINARY  
NOT FOR CONSTRUCTION

The configurations shown are considered typical and for budgetary purposes only. Please rely on your engineer for specific design recommendations. Because of the complexity of geotechnical loading calculations and the susceptibility to extreme change of soil loads with minor changes in local site conditions such as soil parameters, water levels, surcharge loads, etc., we strongly recommend the use of design professionals who are familiar with local wall construction to determine the required sheet piling and component capacities. The material contained within this drawing is not to be used for any project specific design.

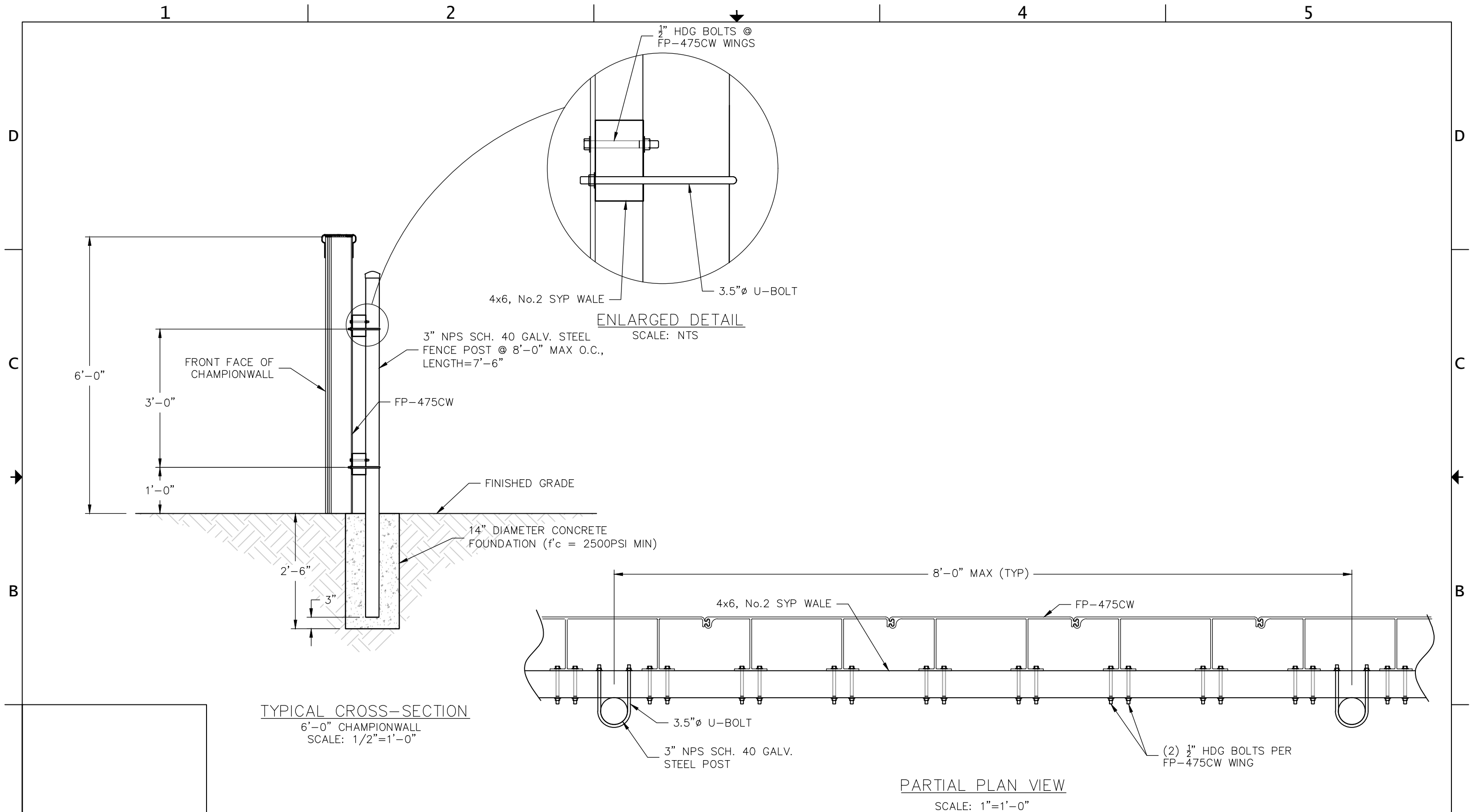
PRODUCT		<b>CHAMPIONWALL CMI</b>	
0	01/04/18	PRELIMINARY	VRP
1	10/31/19	UPDATED STANDARDS	BS
2	03/17/20	UPDATED STANDARDS & FENCES	KLC
3	07/20/20	UPDATED WALE SIZE	KLC
REV	DATE	DESCRIPTION	BY

CLIENT		<b>SportsEdge</b> P.O. Box 837, 259 Murdock Rd. Troutman, NC 28166	
CMI LIMITED CO.		605 MOLLY LANE, SUITE 150 WOODSTOCK, GEORGIA 30189 P:800.256.8857   F:770.933.8363	

PROJECT NAME		CHAMPIONWALL	
LOCATION			
PROJECT NO.			

SHEET TITLE				COVER SHEET			
DESIGNER	KLC	DATE	07/20/2020	CMI PROJECT NO.	Generic ChampionWall		
DRAWN	KLC	DATE	07/20/2020	FILE	Generic ChampionWall	REV	3
CHECKER	VRP	DATE	07/20/2020	SIZE	B	SCALE	NTS
				SHEET	1 OF 5		

© 2020, CMI LIMITED CO.



PRELIMINARY  
NOT FOR CONSTRUCTION

The configurations shown are considered typical and for budgetary purposes only. Please rely on your engineer for specific design recommendations. Because of the complexity of geotechnical loading calculations and the susceptibility to extreme change of soil loads with minor changes in local site conditions such as soil parameters, water levels, surcharge loads, etc., we strongly recommend the use of design professionals who are familiar with local wall construction to determine the required sheet piling and component capacities. The material contained within this drawing is not to be used for any project specific design.

© 2020, CMI LIMITED CO.

0	01/04/18   PRELIMINARY   VRP
1	10/31/19   UPDATED STANDARDS   BS
2	03/17/20   UPDATED STANDARDS & FENCES   KLC
3	07/20/20   UPDATED WALE SIZE   KLC
REV	DATE   DESCRIPTION   BY

<b>CLIENT</b> <b>SportsEdge</b> P.O. Box 837, 259 Murdock Rd. Troutman, NC 28166	<b>PROJECT NAME</b> <b>CHAMPIONWALL</b>
<b>CMI LIMITED CO.</b> 605 MOLLY LANE, SUITE 150 WOODSTOCK, GEORGIA 30189 P: 800.256.8857   F: 770.933.8363	<b>LOCATION</b>  <b>PROJECT NO.</b>

<b>DESIGNER</b> KLC	<b>DATE</b> 07/20/2020	<b>CMI PROJECT NO.</b> Generic ChampionWall
<b>DRAWN</b> KLC	<b>DATE</b> 07/20/2020	<b>FILE</b> Generic ChampionWall
<b>CHECKER</b> VRP	<b>DATE</b> 07/20/2020	<b>SIZE</b> B
	<b>SCALE</b> NTS	<b>SHEET</b> 5 OF 5

<b>SHEET TITLE</b> <b>TYPICAL CROSS-SECTION &amp; DETAILS (6'-0")</b>		
<b>DESIGNER</b> KLC	<b>DATE</b> 07/20/2020	<b>CMI PROJECT NO.</b> Generic ChampionWall
<b>DRAWN</b> KLC	<b>DATE</b> 07/20/2020	<b>FILE</b> Generic ChampionWall
<b>CHECKER</b> VRP	<b>DATE</b> 07/20/2020	<b>SIZE</b> B
	<b>SCALE</b> NTS	<b>SHEET</b> 5 OF 5