

DIAMOND WALL™

by
 **SportsEdge®**
SAFETY MATTERS

Outfield Wall System

sportsedge.com



For that Big League look and performance

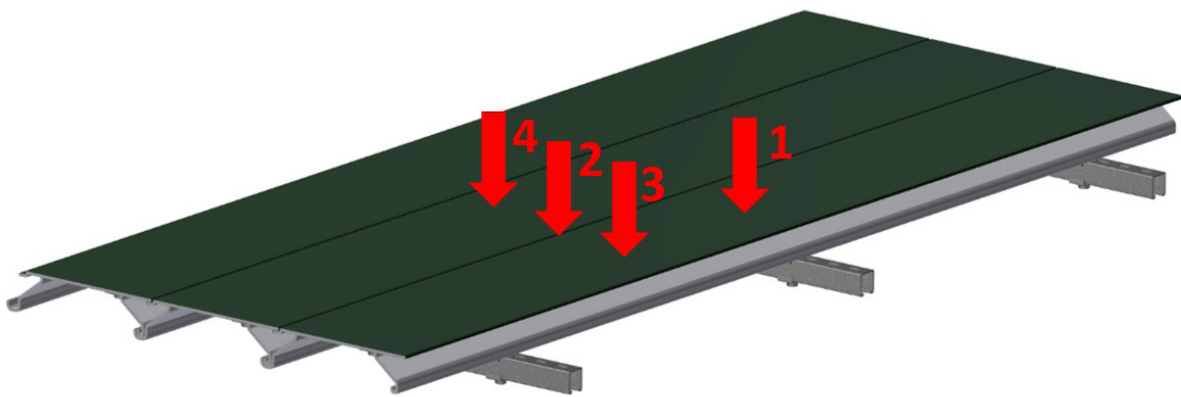
The DiamondWall® System incorporates the latest innovations and enhancements to our outfield wall line. SportsEdge is proud to be the exclusive manufacturer of DiamondWall™, the Athletic Field wall that will bring your ballpark to the next level!

Extruded from virgin PVC; this high-performance athletic wall replaces outdated chain link fencing, metal or wood panels or padded masonry walls. DiamondWall adds to the grandeur of your field with strong, durable and resilient materials. It offers a nostalgic stadium feel in a wall that will stand the test of time. DiamondWall is the tough and low-maintenance way to give your athletic facility a truly professional feel. And it's backed up with an industry leading SportsEdge 20-year warranty.

- **Safety Matters! DiamondWall has extremely low Gmax & HIC ratings**
- **Premium Aesthetics - There's no better finished appearance**
- **Sturdier & longer lasting than chain link fences and other panel styles**
- **Hassle free with minimal maintenance - no rust, no rot**
- **Variable heights – Custom made to your requirements**
- **Easy installation – No heavy equipment required**
- **Eco-friendly – DiamondWall is 100% recyclable**

The Safest Wall Available

Product safety is critical in protecting amateur and professional athletes from harm. The unique panel design creates a spring-like action when impacted, eliminating hard or rigid spots that can cause injuries. Sportsedge has thoroughly tested DiamondWall panels for compliance with Gmax and Critical Fall Height (ASTM F1292) specifications. DiamondWall passes with flying colors with average Gmax of 63 and a HIC rating of 249, easily passing ASTM F2440. These exceptional results make DiamondWall safer than wooden or metal panels or masonry walls....and safer than most padded walls!



| Location | | Drop # | Drop Height (ft) | Impact Velocity (ft/s) | Theoretical Drop Height (ft) | Gmax | HIC | Results | |
|----------|---------------------------------|--------|------------------|------------------------|------------------------------|------|-----|---------|-----|
| | | | | | | | | Gmax | HIC |
| 1 | On waler; Center of Panel | 1 | 4 | 16.0 | 4.0 | 90 | 289 | 68 | 287 |
| | | 2 | 4 | 16.0 | 4.0 | 68 | 287 | | |
| | | 3 | 4 | 16.0 | 4.0 | 67 | 287 | | |
| 2 | Between Walers; Panel Seam | 1 | 4 | 16.0 | 4.0 | 53 | 230 | 68 | 236 |
| | | 2 | 4 | 16.0 | 4.0 | 64 | 235 | | |
| | | 3 | 4 | 16.0 | 4.0 | 72 | 237 | | |
| 3 | Between Walers; Center of Panel | 1 | 4 | 16.0 | 4.0 | 54 | 207 | 52 | 204 |
| | | 2 | 4 | 16.0 | 4.0 | 51 | 203 | | |
| | | 3 | 4 | 16.0 | 4.0 | 53 | 204 | | |
| 4 | Between Walers; Panel Leg | 1 | 4 | 16.0 | 4.0 | 65 | 269 | 65 | 268 |
| | | 2 | 4 | 16.0 | 4.0 | 65 | 267 | | |
| | | 3 | 4 | 16.0 | 4.0 | 65 | 268 | | |

Table 1 – Results per Firefly Sports Testing (5-28-2024)

DiamondWall

Monster Green

All-Star Gray

Stadium Blue

Color Choices

Choose from three color options; Monster Green, All-Star Gray or Stadium Blue. The co-extrusion manufacturing process creates a color coat that is not simply paint. The ASA surface coating is 3 mils thick and is the most color-fast technology available. The surface finish of the panel reduces glare and helps to hide surface blemishes.

Yellow

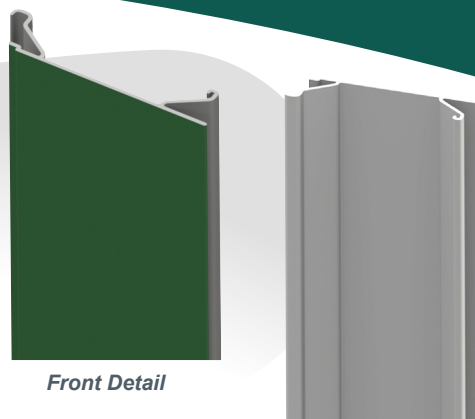
The StadiumGuard wall cap, Foul Lines and Distance Numbers are a high visibility yellow.

Batter's Eye & Other Options

Wall heights are infinitely variable. A batter's eye can be created in centerfield by using panels in a stepped-up height. Fields can be totally enclosed if desired by adding shorter walls down the sidelines. The wall is finished off with a Yellow cap that creates good definition of the top edge. Accessories include yellow PVC foul lines that can be attached directly to the wall panels. SportsEdge even offers large, durable distance numbers to complete the package.

Wall Panels

Panels are 12" wide and form an overlapping joint where they meet in the front. This innovative design promotes alignment and the appearance of a continuous wall. On the back, flexible angled flanges nest together to form the mounting area.

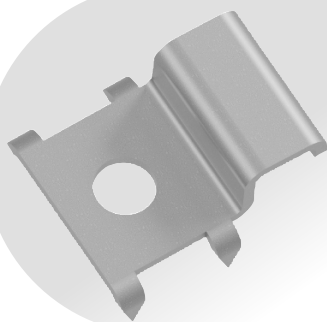


Front Detail

Back Detail

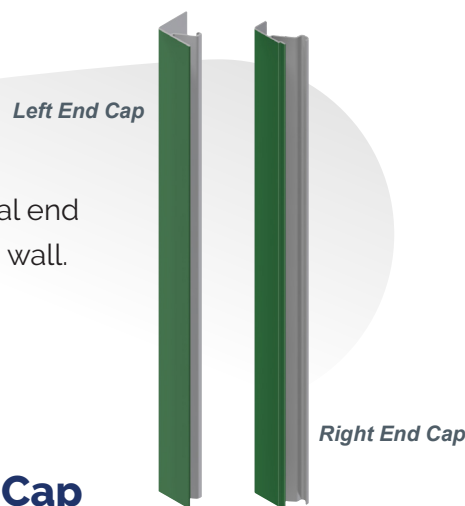
Quick-Clips

These proprietary installation clips fit over the nested joint of the panels. Panels are secured to the waler with a ½" bolt which passes through the clip and then through the pre-drilled hole in the strut channel or the field drilled hole in the wooden waler. No additional hardware is required. DiamondWall is a complete system.



End Caps

To finish the ends of the structure, there are color-matched vertical end caps. These caps will be the same height as the last panels in the wall. Caps are produced as left (female) and right (male) sections.

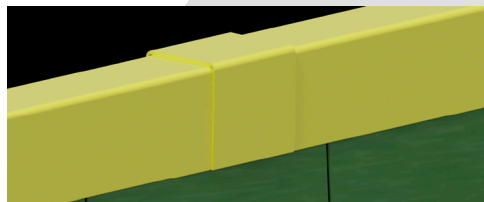


Left End Cap

Right End Cap

StadiumGuard™ Cap

All caps are yellow and come in 8 foot lengths. They are provided with slotted holes where the yellow self-drilling screws attach the cap to the wall. This feature accommodates any thermal expansion of the cap. The bell end covers a portion of the adjacent piece for a continuous appearance.



Distance Numbers

The 18" high numbers are laser cut from 3mm thick PolyMetal and are available in yellow or white.



Foul Line Stripes

These optional panels are 4" wide and are mounted in the field in line with the painted foul line of the field. Stripes are cut from the same material as the distance numbers

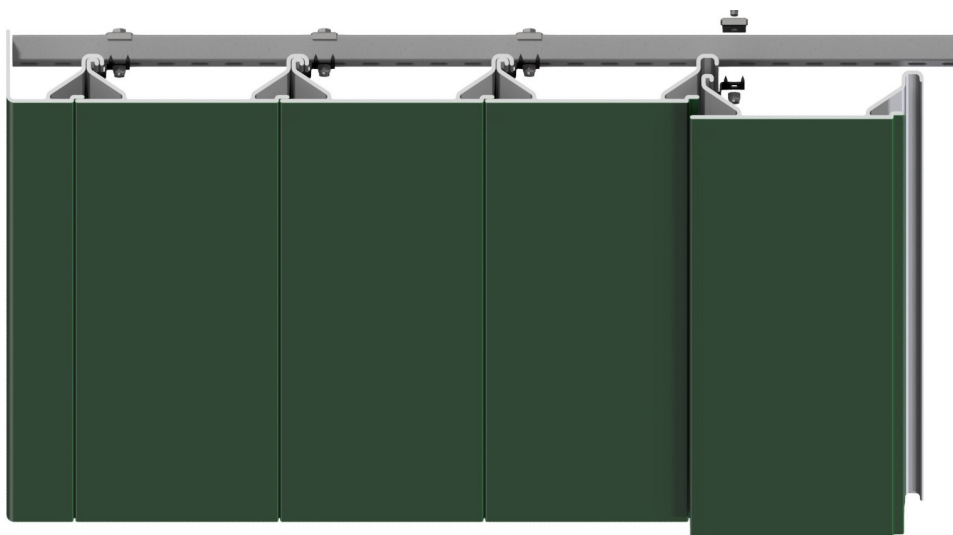
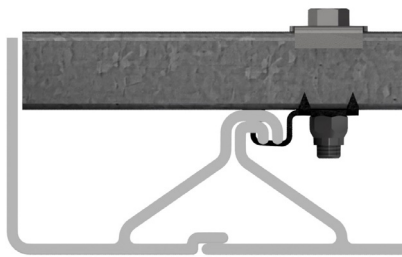
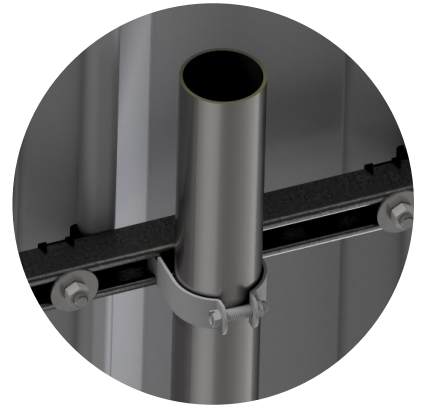
DiamondWall

Wall Panel Installation Options



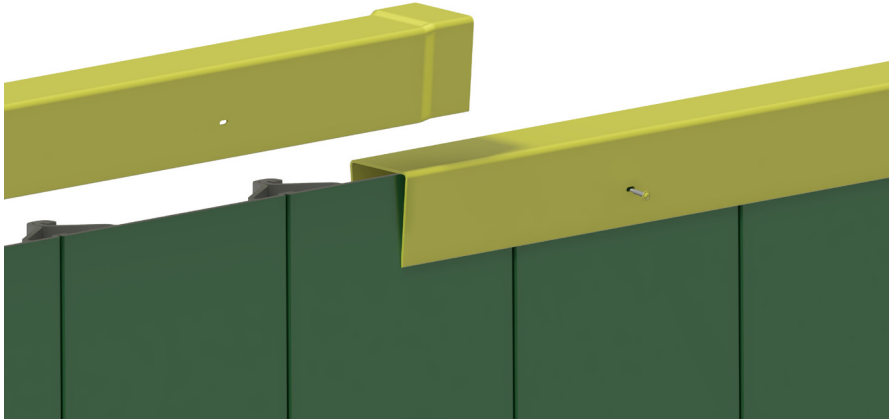
Strut Channel Walers Basis of Design

The easiest installation method uses commonly available 1 5/8" pre-drilled strut channel. The tangs on the Quick-clip align and square themselves around the channel. The contractor supplied bolt passes through the hole in the channel.



Start installation from the left side as shown above. The lap joint is designed to work in this sequence. Position the left end cap and the first panel so the return of the end cap is tight against the end of the waler. The Quick-Clip is designed to capture the two panel hooks, center them and hold them fast to the waler.

StadiumGuard Wall Cap



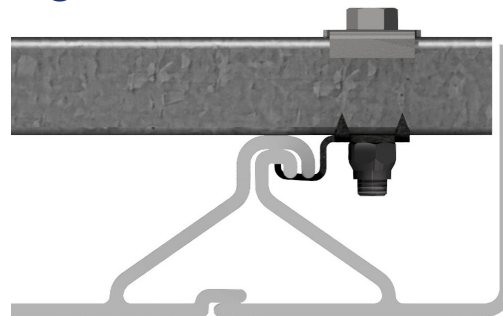
The StadiumGuard cap has several unique, installer-friendly features. When the cap is seated atop the wall channel, three provided yellow, self-drilling screws are installed through the slotted holes in the face of the cap. The screws are not to be fully seated. This allows movement of the cap due to thermal expansion. All caps have one bell end which is designed to go over the adjacent cap to provide a continuous appearance.

Wall Panel End Caps

Left End



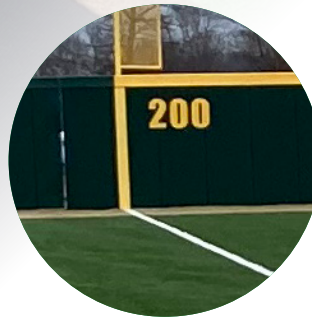
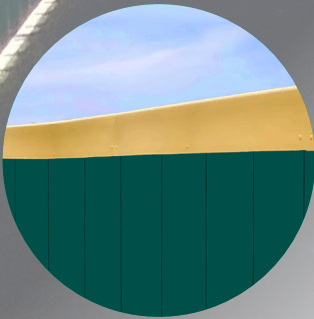
Right End



End caps are attached to the walers like any other wall panel. The left (female) end cap is installed with the first wall panel and the right (male) installs with the last. End caps should just clear the strut channel waler. Prior to end cap installation, the waler must be trimmed to the dimensions called out in the DiamondWall Installation Manual..



NO RUST! NO ROT! NO DENTS!



SportsEdge®

A division of ABT, Inc.
PO Box 837
259 Murdock Road
Troutman, NC 28166
www.sportsedge.com
800.334.6057

DISCLAIMER: The customer and the customer's architects, engineers, consultants and other professionals are completely responsible for the selection, installation, and maintenance of any product purchased from ABT, and EXCEPT AS EXPRESSLY PROVIDED IN ABT'S STANDARD WARRANTIES, ABT MAKES NO WARRANTY, EXPRESS OR IMPLIED, AS TO THE SUITABILITY, DESIGN, MERCHANTABILITY, OR FITNESS OF THE PRODUCT FOR CUSTOMER'S APPLICATION. Copies of ABT's standard warranties are available upon request.

06/05/2025



sportsedge.com