



DiamondWall

INSTALLATION, OPERATION & MAINTENANCE MANUAL

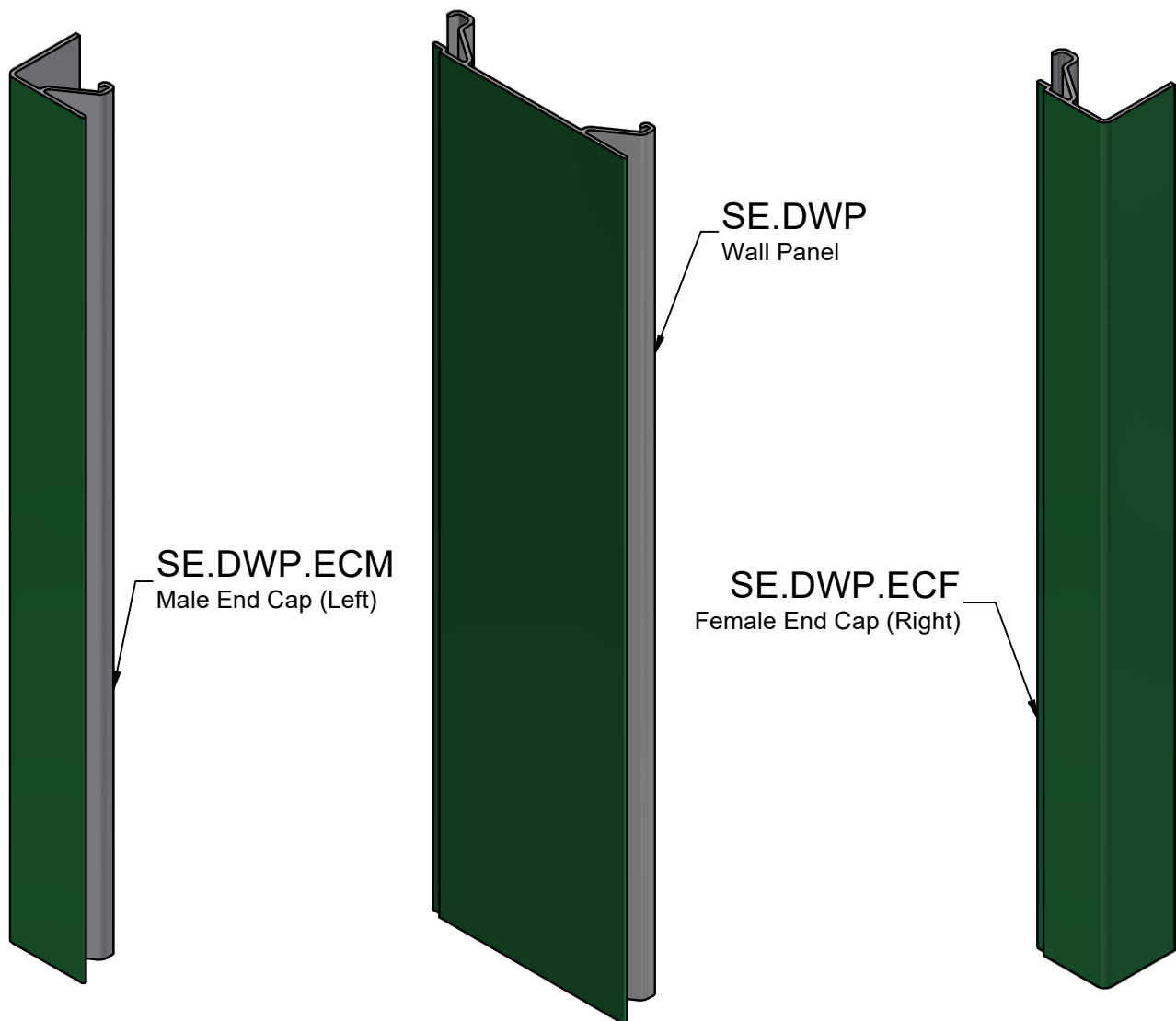
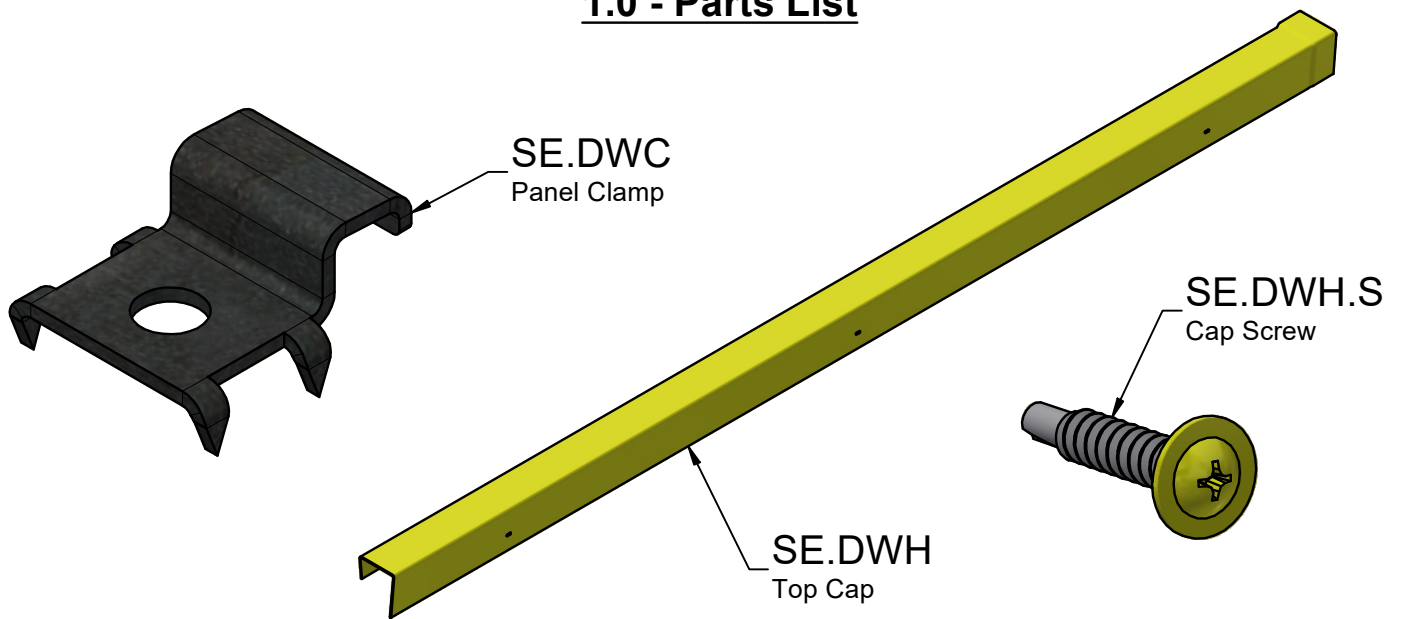
P.O. Box 837 - 259 Murdock Road - Troutman, NC 28166
Tel (704) 528-0188 - Fax (704) 528-0179 - www.sportsedge.com
Toll free in the USA, Canada, and Mexico (800) 334-6057
Email info@sportsedge.com

TABLE OF CONTENTS:

1.0 - Parts List	3
2.0 - Installation	4
2.1 - Useful or Req'd Tools	4
2.2 - Handling Instructions	5
2.3 - Support Structure	6
2.4 - Wall Panel Assembly	7
2.5 - Cap Assembly	10
3.0 - Maintenance / Replacement Parts	12

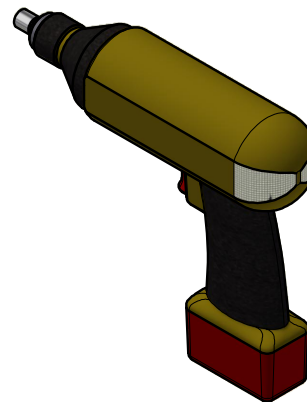
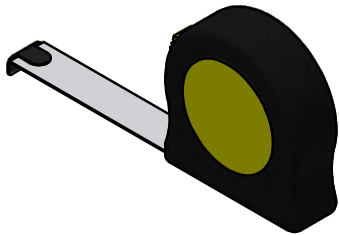
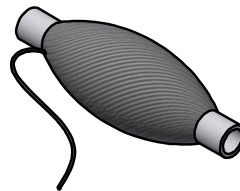
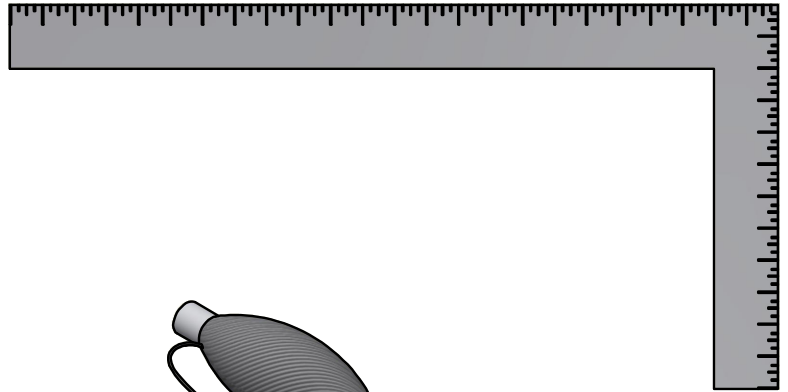
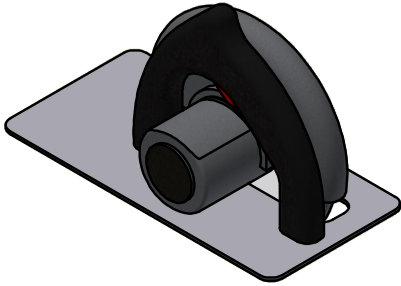
WARNING: READ ALL INSTRUCTIONS CAREFULLY AND COMPLETELY PRIOR TO INSTALLATION AND USE OF PRODUCT..
ASSEMBLY SHOULD BE COMPLETED BY TRAINED PERSONNEL WITH APPROPRIATE TOOLS AND PPE. INSTALLER SHOULD
INSPECT ALL PARTS FOR DEFECTS PRIOR TO ASSEMBLY. ENSURE ALL FASTENERS ARE FIRMLY TIGHTENED PRIOR TO USE.
FAILURE TO HEED THESE INSTRUCTIONS MAY RESULT IN PROPERTY DAMAGE AND/OR PHYSICAL INJURY.

1.0 - Parts List



2.1 - INSTALLATION

USEFUL OR REQ'D TOOLS



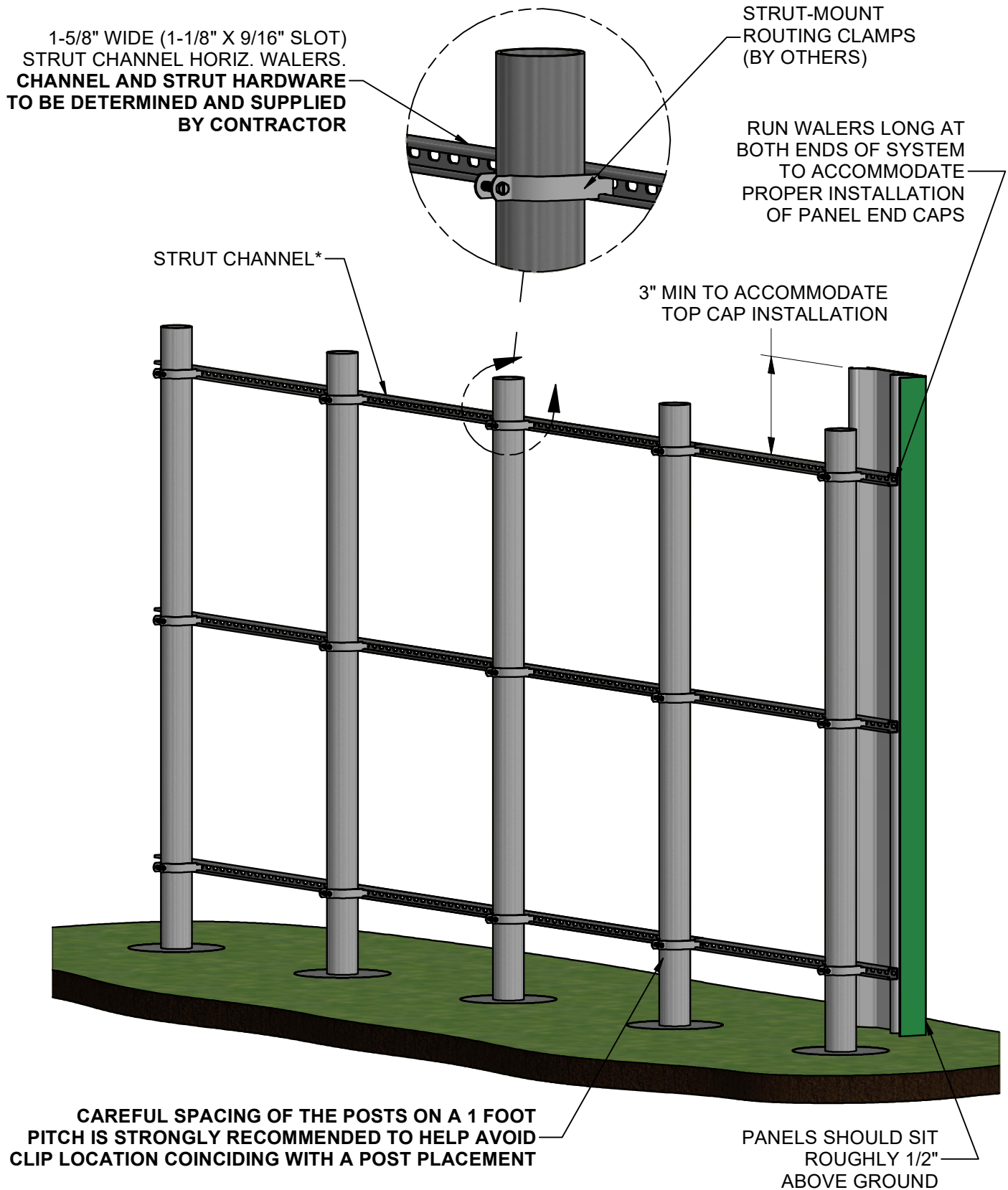
2.2 - INSTALLATION

UNLOADING & HANDLING GUIDELINES

- Use care when unloading the panel bundles from the truck to protect the integrity and aesthetics of the panels.
- The preferred machinery for site handling is a forklift. Some jobsite machinery can be too inexact with fork placement resulting in inadvertent damage to the panels.
- To unload from the truck, insert the forks under the bundle without scraping it, and then proceed with lifting the material. Always avoid dragging the forks across the panels which can cause damage and void the warranty.
- Stage the bundles evenly spaced around the perimeter of the playing field / along the length of the fence structure for easy placement during installation.
- Do not stack bundles to a height and/or in a fashion that may cause them to collapse or fall over (High winds may blow stacks of bundles over). Do not stack more than 3 bundles high.
- Panels should remain bundled and covered in protective wrapping during unloading and all forklift handling.
- Once panel bundles are offloaded and staged on the ground, it is important to note that further careful handling techniques are necessary.
 - Never slide or drag panels on one another. Always lift panels directly up off of the stack and then carry them away.
 - Do not drop, throw, flip, or otherwise carelessly handle panels.
 - For panels that are too large to lift and install manually, handle using a soft lifting sling to avoid scratching or damage.
- It is advisable to take photos of the goods upon delivery in the event of damages found upon unpacking.
- All warranty claims, due to shipping issues, must be emailed to SportsEdge, 259 Murdock Rd., Troutman, NC 28166, at info@sportsedge.com within 5 business days of delivery.

2.3 - INSTALLATION

SUPPORT STRUCTURE



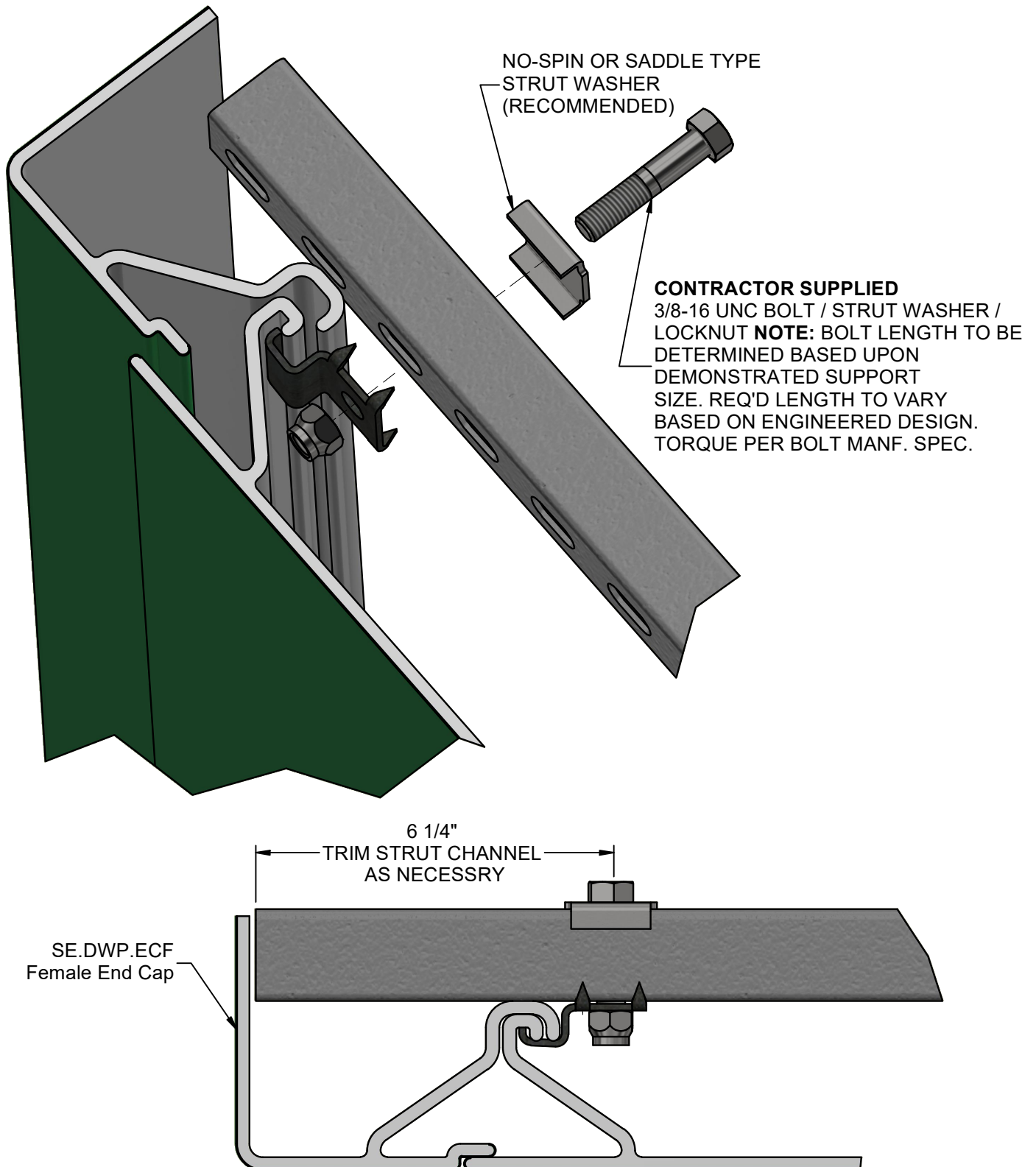
*STRUT CHANNEL WALERS ARE SHOWN AS THE BASIS OF DESIGN. REFER TO PROJECT ENGINEER FOR SPECIFIC FOOTING AND SUPPORT SYSTEM DETAILS. ALWAYS CONSULT AN ENGINEER TO DETERMINE APPROPRIATE WALL HEIGHTS, SUPPORTS, AND PERIPHERAL REQUIREMENTS. DRAINAGE SHOULD BE ADDRESSED TO ENSURE THAT STORMWATER IS ADEQUATELY MANAGED AFTER WALL INSTALLATION. **INSTALLATION NOTES ARE FOR REFERENCE ONLY.**

2.4 - INSTALLATION

WALL PANEL ASSEMBLY

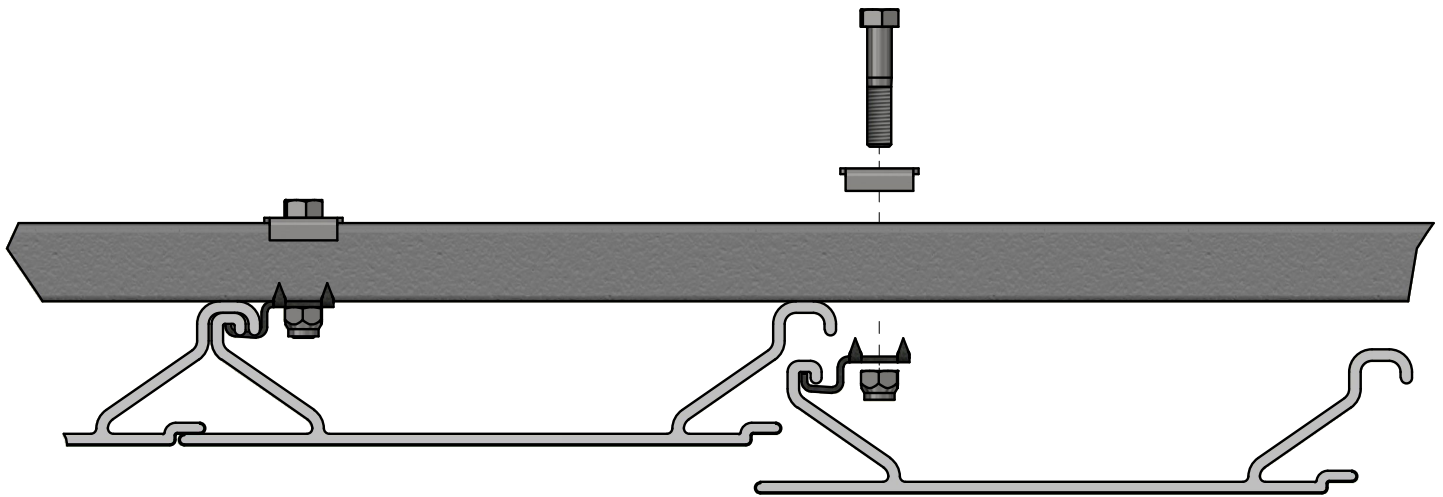
STEP 1: MOUNT MALE END CAP (LEFT) AND FIRST PANEL AS SHOWN, STARTING FROM THE LEFT END (FACING WALL). PANELS MUST BE CLAMPED AT EACH HORIZONTAL WALER USING 3/8-16 BOLTS & PREVAILING TORQUE LOCK NUTS.

NOTE: ENSURE FIRST PANEL IS PLUMB PRIOR TO INSTALLATION OF SUBSEQUENT PANELS.

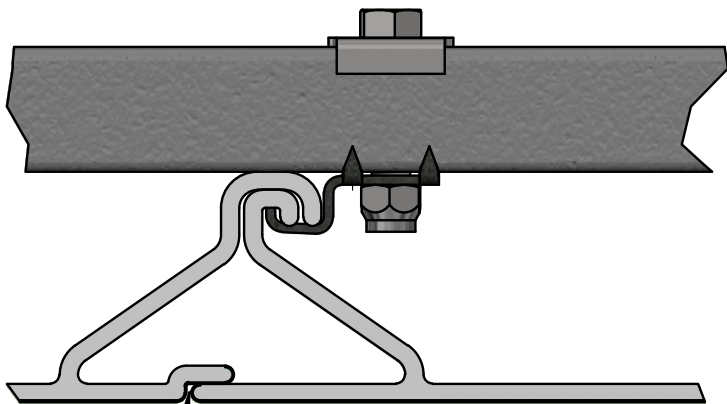


2.4 - INSTALLATION

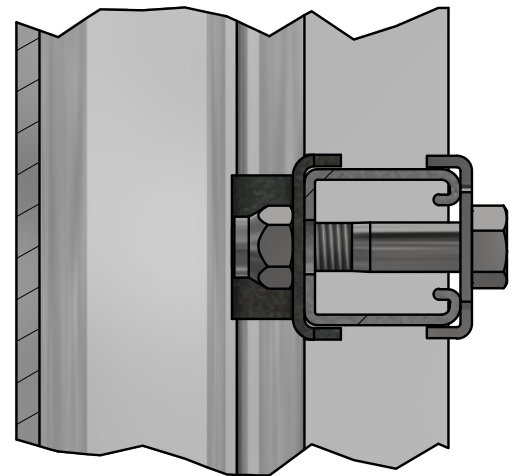
WALL PANEL ASSEMBLY



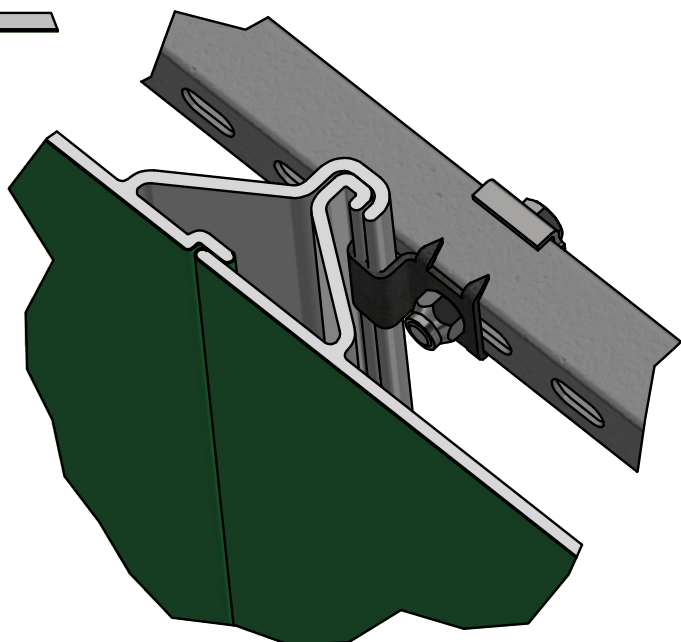
STEP 2: CLAMP SUBSEQUENT PANELS AS SHOWN. PANELS MUST BE CLAMPED AT EACH HORIZONTAL WALER USING 1/2-13 BOLTS & PREVAILING TORQUE LOCK NUTS.



1/16" GAP REQUIRED
BETWEEN PANEL FACES
(NATURAL RESTING POSITION)

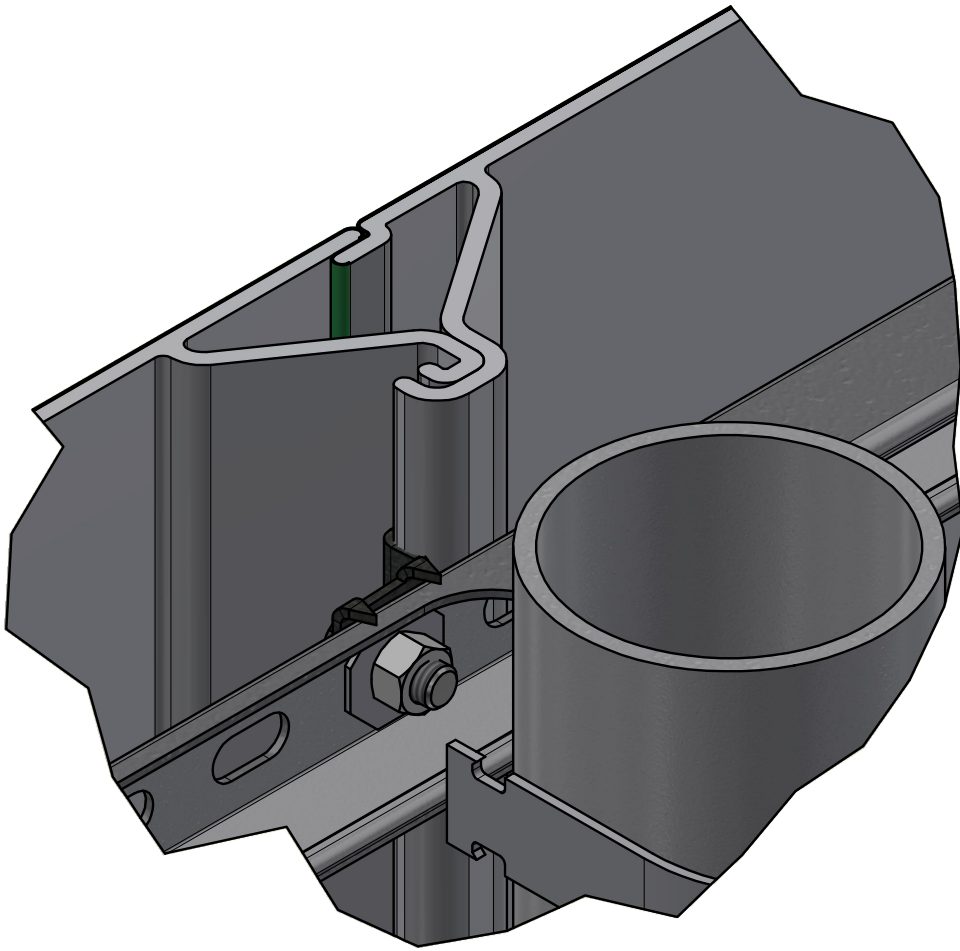


CLAMP CROSS SECTION



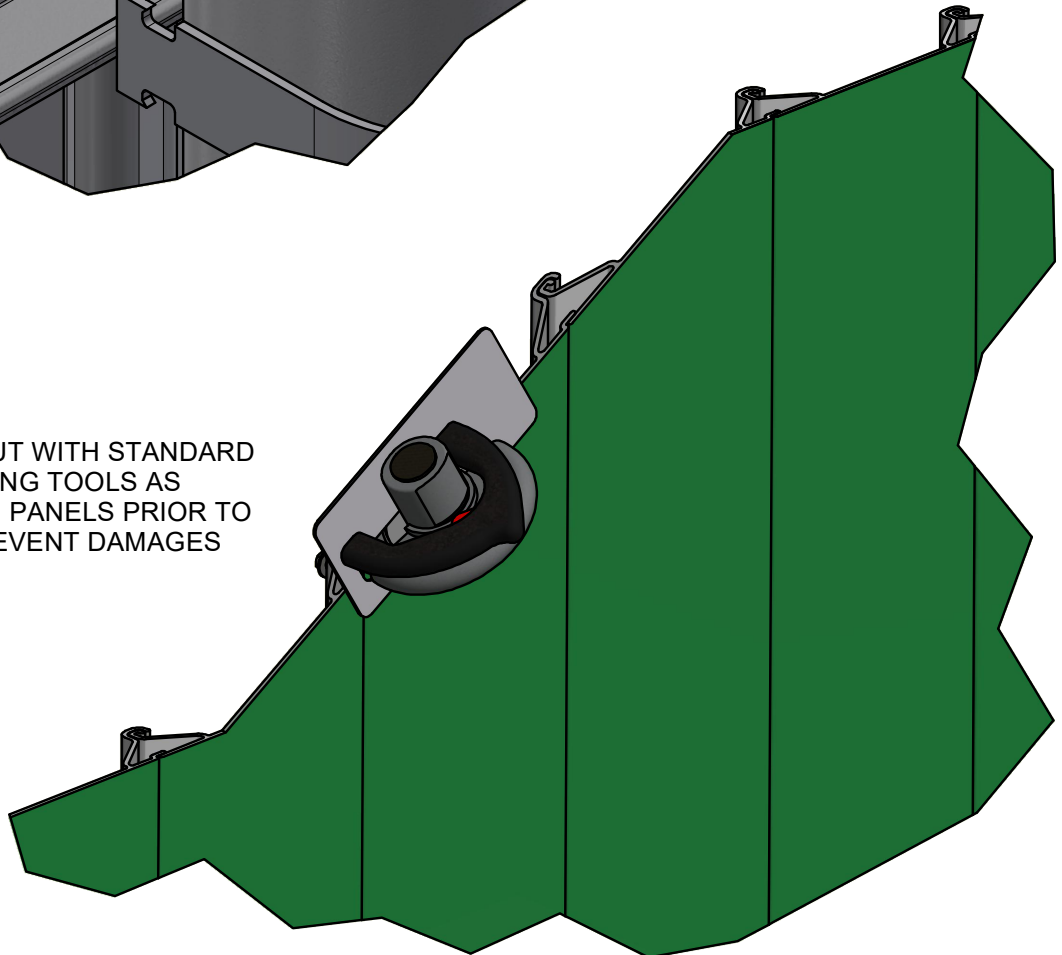
2.4 - INSTALLATION

WALL PANEL ASSEMBLY



NOTE: CENTERING STRUT WASHER AND SHORTER BOLT CAN BE USED IF CLAMPING BRACKET LOCATION COINCIDES WITH FENCE POST. TEMPORARILY REMOVE POST CLAMP TO ACCESS CLIP AREA. REPLACE POST CLAMP AFTER CLIP INSTALLATION.

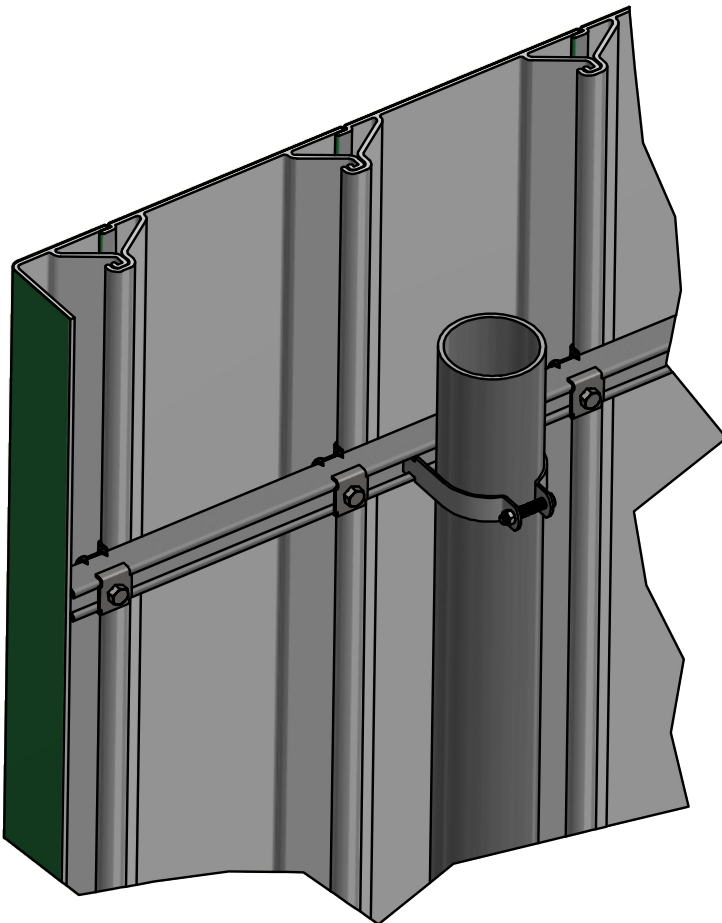
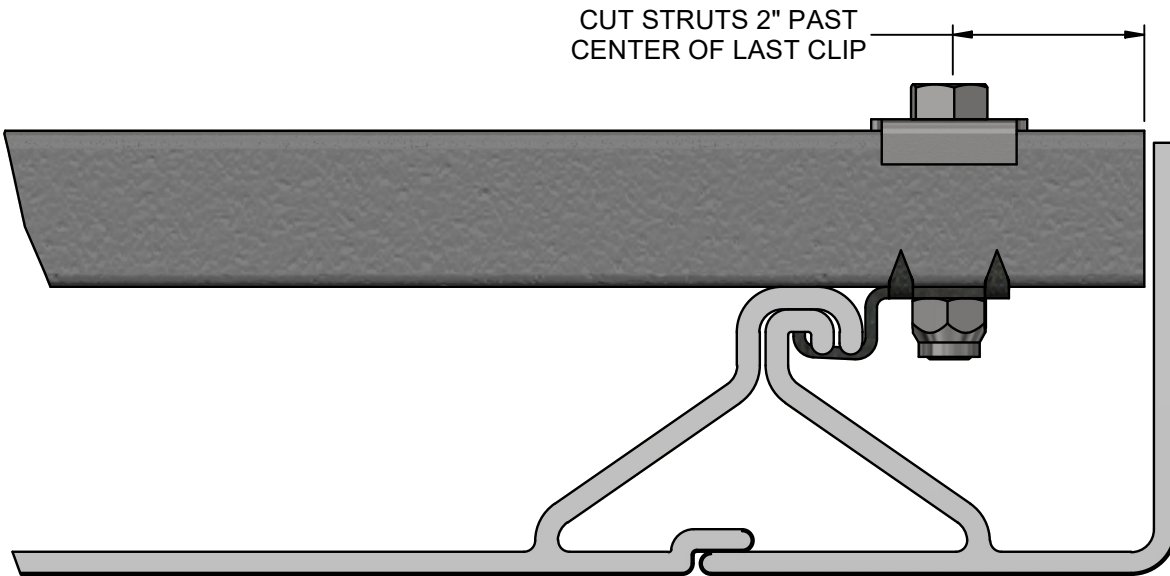
PANELS CAN BE CUT WITH STANDARD WOODWORKING TOOLS AS NECESSARY. TAPE PANELS PRIOR TO CUTTING TO PREVENT DAMAGES



2.5 - INSTALLATION

CAP INSTALLATION

STEP 3: TRIM WALERS TO PROPER LENGTH (SEE BELOW)

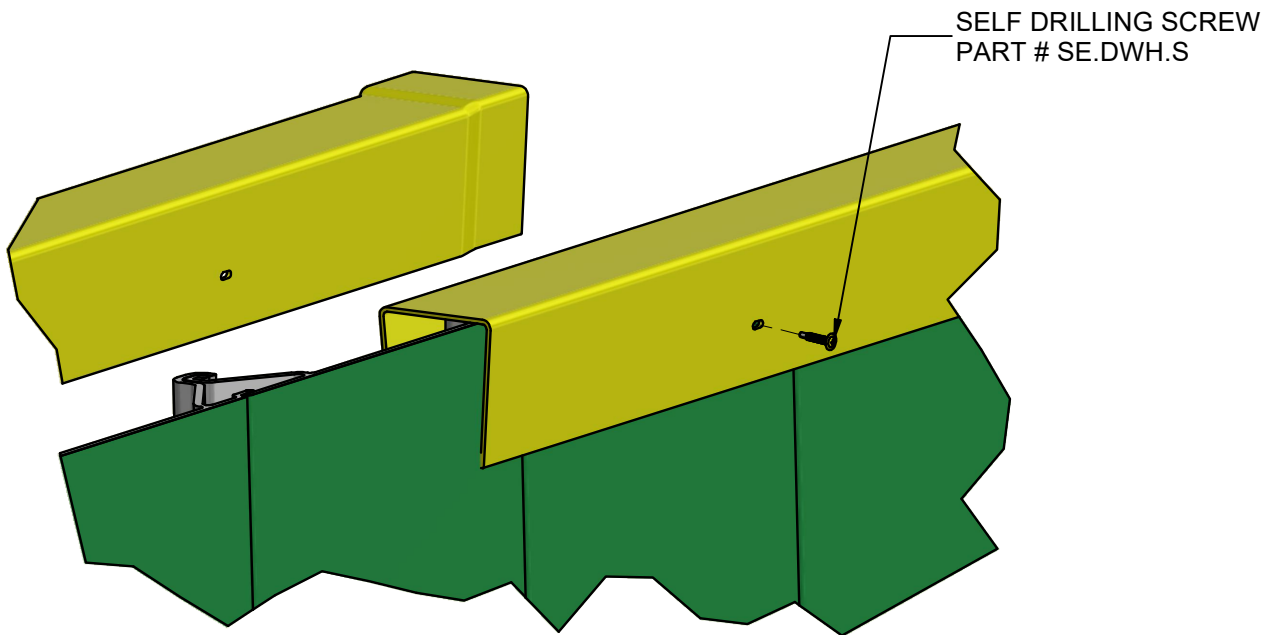


STEP 4: CAP END OF WALL SYSTEM
WITH SE.DWP.ECM MALE END
PANEL. CAP SHOULD SIT TIGHT
AGAINST END OF WALER TO
PREVENT MOVEMENT/DAMAGE.

2.5 - INSTALLATION

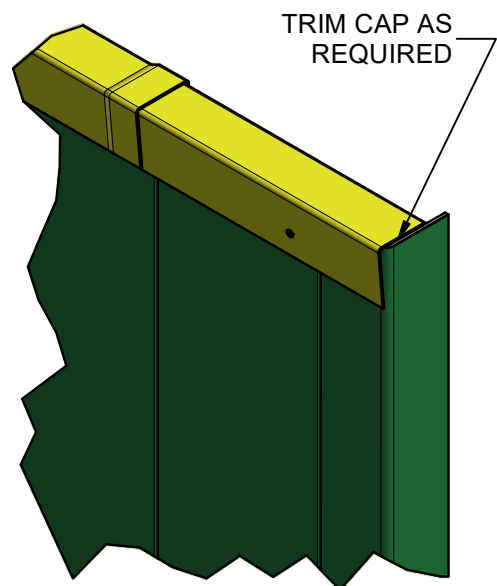
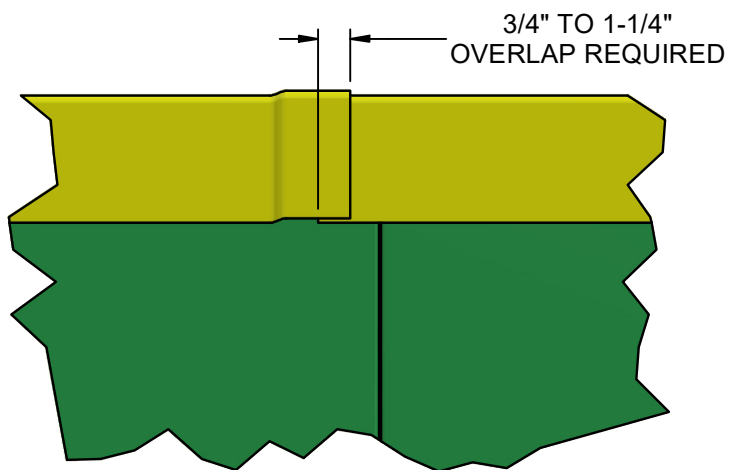
CAP INSTALLATION

NOTE: LEAVE SCREWS SLIGHTLY LOOSE TO ALLOW CAP TO EXPAND/CONTRACT. TIGHTEN UNTIL CONTACT THEN BACK OUT ONE FULL TURN



STEP 5: SECURE TOP CAP WITH PROVIDED SELF DRILLING SCREWS. QTY 3 REQUIRED PER CAP SECTION. ENSURE CAPS OVERLAP BETWEEN 3/4" and 1-1/4".

NOTE: DO NOT PRE-DRILL PANELS



3.0 - MAINTENANCE / REPLACEMENT PARTS

The following is the recommended operation and maintenance procedures for SportsEdge® DiamondWall Outfield Wall System:

OPERATION:

1. DiamondWall Panels installed in a permanent manner have no specific operational guidelines.
2. If your DiamondWall System includes SportsEdge® manufactured field access gates, please refer to separate gate schematic for latch/drop rod operations.

MAINTENANCE:

1. DiamondWall was designed with Safety and Durability in mind. To maximize the longevity of your system, please limit the following activities:
 - i. Use of DiamondWall as a backstop in bullpen areas (pitching activities) or batting activities such as Soft Toss or Tee Drills (or other warm ups drills) that are common to baseball/softball fields that may subject DiamondWall to unnecessary high velocity impact.
 - ii. Use of DiamondWall as a backstop for other sporting implements for which DiamondWall was not explicitly designed or tested for resilience to, including but not limited to Weighted Baseball / Softball Training Balls, Golf Balls, Lacrosse Balls, Shot Put, Discus, Hammer (Hammer Throw Event), Javelin, Disc Golf Disc, Paintballs, etc.
2. Periodically inspect your wall system for panels including holes or damage that could pose a safety risk to the athlete or participant. Replace panels from provided original attic stock or reach out to SportsEdge® for replacement panels.
3. Periodically inspect the DiamondWall system support structure to ensure the system is adequately braced and secured as originally installed.
4. DiamondWall includes the ASA color Cap Stock as originally selected (Blue/Gray/Green). Care should be taken for color aesthetics and longevity. Annual cleaning is recommended to prevent dirt from building up and help keep your product looking like new.
 - i. The cleaning of DiamondWall should be limited to mild cleaner (see below) and a soft bristle brush.

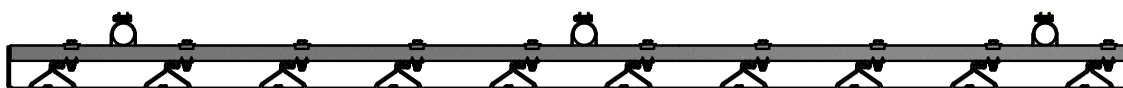
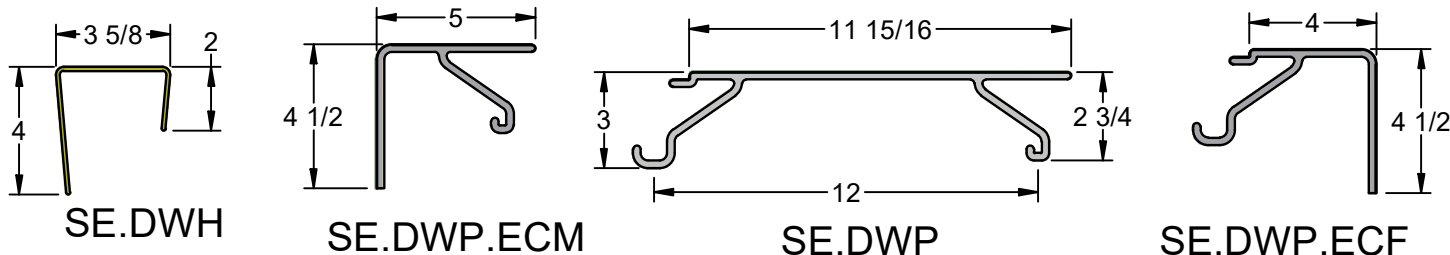
Mr. Clean Magic Eraser
Simple Green All-Purpose Cleaner
Mr. Clean Multi-Purpose Cleaner
Lysol Multi-Surface All-Purpose Cleaner
Windex Multi-Surface Cleaner
Vinegar and Water
 - ii. DO NOT use coarse brushes or cleaners containing aggressive organic solvents in cleaning procedures.
 - iii. Avoid the use of vinyl decals aside from permanent graphics. Rotating advertisement or temporary graphics will leave ghost images where placed and removed after sun exposure.
 - iv. DiamondWall is a polymer compound and will oxidize over its lifecycle resulting in a natural color change over time.

REPLACEMENT PARTS:

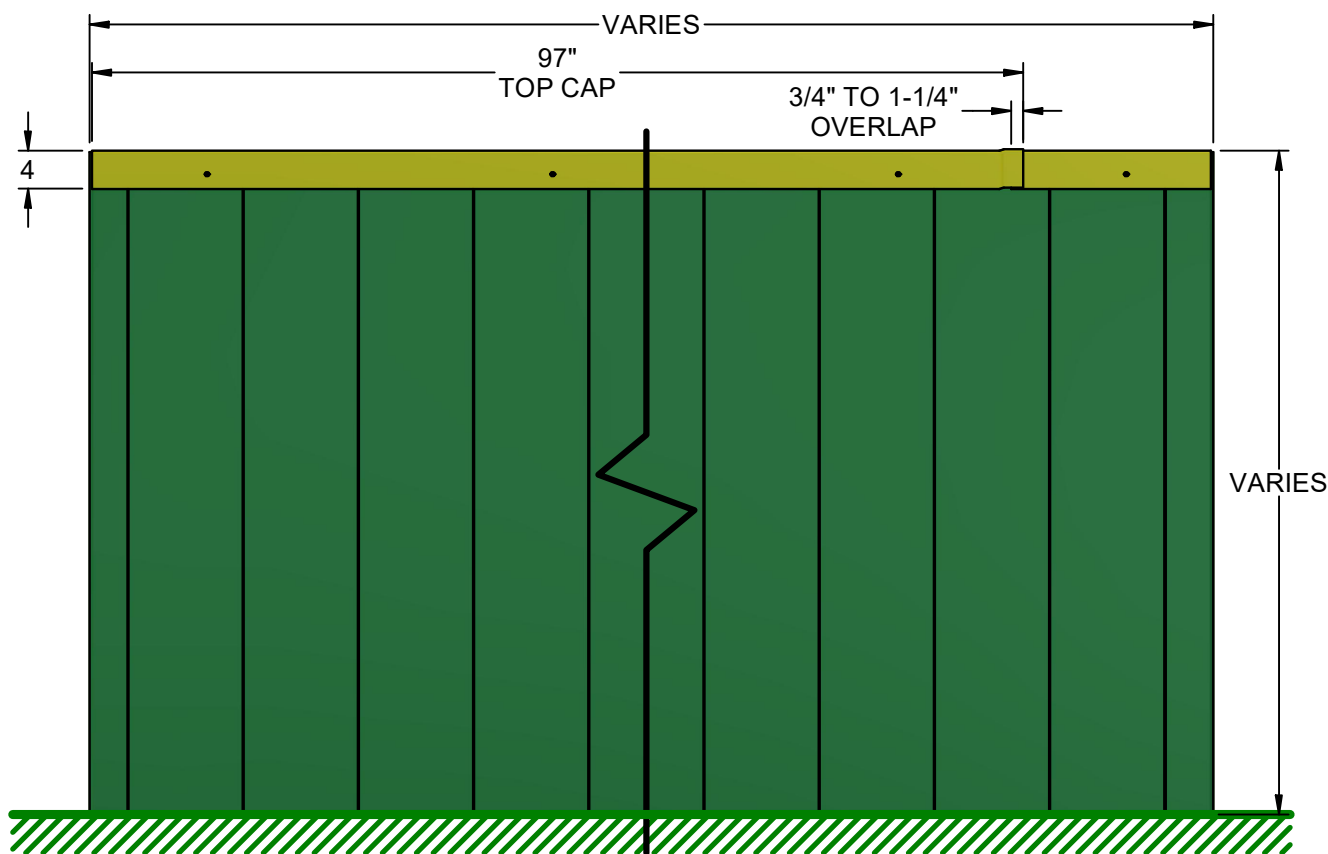
Replacement parts are available from:

SportsEdge®
259 Murdock Road
Troutman, NC 28166
PH: 800-334-6057
FX: 704-528-0179
www.sportsedge.com
info@sportsedge.com

DISCLAIMER: The customer and the customer's architects, engineers, consultants and other professionals are completely responsible for the selection, installation, and maintenance of any product purchased from ABT, and EXCEPT AS EXPRESSLY PROVIDED IN ABT'S STANDARD WARRANTIES, ABT MAKES NO WARRANTY, EXPRESS OR IMPLIED, AS TO THE SUITABILITY, DESIGN, MERCHANTABILITY, OR FITNESS OF THE PRODUCT FOR CUSTOMER'S APPLICATION. Copies of ABT's standard warranties are available upon request.



TOP VIEW



ELEVATION VIEW



A Division of ABT, Inc.
P.O. Box 837 / 259 Murdock Road
Troutman, NC 28166
(800) 334-6057

DETAIL DRAWING © 2024 ABT, Inc.

DIAMONDWALL ATHLETIC WALL SYSTEM

PART:

SE.DW.DETAIL

REV: 00
5/10/2024

Proprietary rights of ABT, Inc. are included in the information disclosed herein. The recipient, by accepting this document, agrees that neither this document nor the information disclosed herein nor any part thereof shall be copied, reproduced or transferred to others for manufacturing or for any other purpose except as specifically authorized in writing by ABT, Inc.

DISCLAIMER: The customer and the customer's architects, engineers, consultants and other professionals are completely responsible for the selection, installation, and maintenance of any product purchased from ABT, and EXCEPT AS EXPRESSLY PROVIDED IN ABT'S STANDARD WARRANTIES, ABT MAKES NO WARRANTY, EXPRESS OR IMPLIED, AS TO THE SUITABILITY, DESIGN, MERCHANTABILITY, OR FITNESS OF THE PRODUCT FOR THE CUSTOMER'S APPLICATION. Copies of ABT's standard warranties are available upon request.