



PRIDE. QUALITY. TRADITION.





Flagpoles & Flagpole Accessories

HALYARD SYSTEMS

A halyard system's truck determines how a flagpole works. Choose from stationary, single revolving or double revolving external halyard or internal halyard systems. (Internal halyard systems offered with V-Cleat, cam cleat design or winch with removable crank handle.)



External Halyard
Single Stationary
(ESS)



External Halyard
Single Revolving
(ESR)



External Halyard
Double Revolving
(EDR)



Internal Halyard
Cam Cleat / Colonial
V-Cleat (ICC / IVC)



Internal Halyard
with Winch
(IWW)

STANDARD FINISHES

Aluminum: Directional sanded satin aluminum finish.

Thermoset Powder Coating Paint: Lightly textured Guaranteed Color Uniformity - The outdoor life of our Thermoset powder coating is rated at 15-plus years by the National Association of Architectural Metal Manufacturers Metal Finishes Manual.

Finish Warranty: We warrant our factory applied Thermoset powder coatings against damage due to normal Climatic conditions for up to five years from the date of shipment.

Anodized: Available in clear, light bronze, medium bronze, dark bronze and black.

Refer to back page for color suffix.



02 - Satin
Aluminum



BH - White
Powder Paint



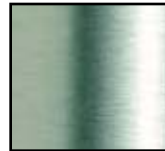
BM - Dark Bronze
Powder Paint



BA - Black
Powder Paint



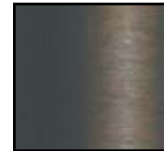
BV - Dark Green
Powder Paint



AA - Clear
Anodized



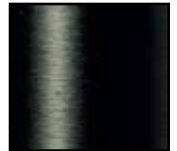
AB - Light Bronze
Anodized



AC - Medium
Bronze
Anodized



AD - Dark Bronze
Anodized



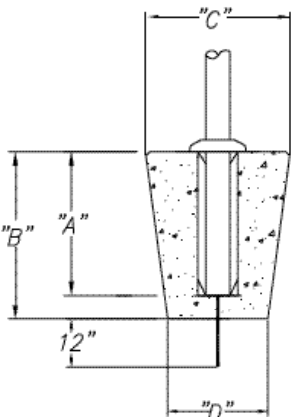
AE - Black
Anodized

Please note these are photographic reproductions of available finishes. There will be minor production variation. Please contact the factory for samples.

FOUNDATIONS

Groundset: Our standard foundation method offers the most support and is the most economical foundation choice.

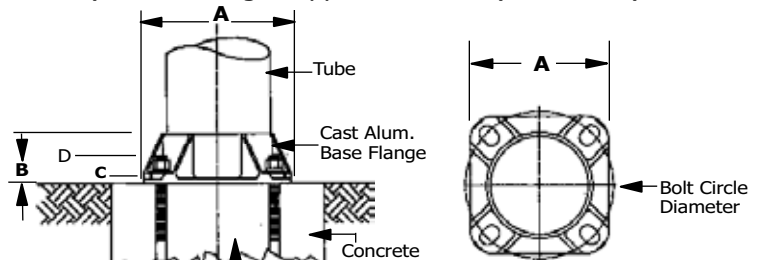
*Foundation size will vary with soil conditions.



Exposed Height	A	B	C	D
20'0"	2'0"	2'6"	30"	24"
25'0"	2'6"	3'0"	36"	24"
30'0"	3'0"	3'6"	36"	24"
35'0"	3'6"	4'0"	36"	30"
40'0"	4'0"	4'6"	45"	36"
45'0"	4'6"	5'0"	45"	36"
50'0"	5'0"	5'6"	50"	42"
55'0"	5'6"	6'0"	50"	42"
60'0"	6'0"	6'6"	60"	48"
65'0"	6'6"	7'0"	60"	48"
70'0"	7'0"	7'6"	60"	48"
75'0"	7'6"	8'0"	60"	48"
80'0"	8'0"	8'6"	72"	48"

- Suggested dimensions
- "B" and "C" dimensions based on NAAMM Recommendation for good, firm, dry soil only. Metal Flagpole Manual (c. 1984).

Shoebase: Used when an above ground installation is more feasible; mounting on a column, a building's flat surface (like a roof) or a building's support structure (steel beam).



Four Galvanized Steel Anchor Bolts 55,000 PSI Minimum Yield, with Galvanized Steel Hex Nuts, Lockwashers and Flatwashers

Tube Dia.	A	B	C	D	Bolt Dia.	Bolt Circle Dia.
4"	7 1/2"	3"	9/16"	2"	3/4"	6 1/2" - 8"
5"	7 1/2"	3"	9/16"	2"	3/4"	7 1/2" - 8"
6"	9 3/4"	3 1/2"	11/16"	2 3/4"	1"	9" - 10"
7"	10 1/2"	3 11/16"	11/16"	2 3/4"	1"	10" - 11"
8"	11 1/4"	3 15/16"	13/16"	2 3/4"	1"	11" - 12"
9"	13"	4 1/4"	7/8"	2 3/4"	1"	13" - 14"
10"	14"	4 7/8"	1"	3 3/4"	1"	14" - 15"
12"	17"	8"	1 3/8"	3 3/4"	1 1/4"	16" - 18"



FOR RESIDENTIAL AND COMMERCIAL APPLICATIONS

American Flagpole, the leader in flagpole manufacturing and design, is unsurpassed in experience and engineering capabilities.

Our state-of-the-art production facility allows us to manufacture a wide variety of flagpoles as standard items, many in stock, with the capability to develop custom flagpoles, banner poles, towers, spires and accessories to accent any special project.



We provide you with finished flagpoles that stand up to every requirement and stand out by quality and design.

Seeing flags fly at home and around the world inspires our quality commitment.

American Flagpole's success shows in more than 70 years proven experience.

Design your project's flagpole online with our flagpole designer.



www.americanflagpole.com

American Tradition (ESS20A33-02):

Twenty foot in ground, three-piece cone tapered (3" butt diameter tapers to 1 7/8") .095 wall thickness, high strength aluminum flagpole featuring a satin finish, 6" aluminum cleat, 40' of braided halyard rope, snaphooks, PVC ground sleeve, cast aluminum truck with aluminum pulley and a 3" gold anodized aluminum finial ball.





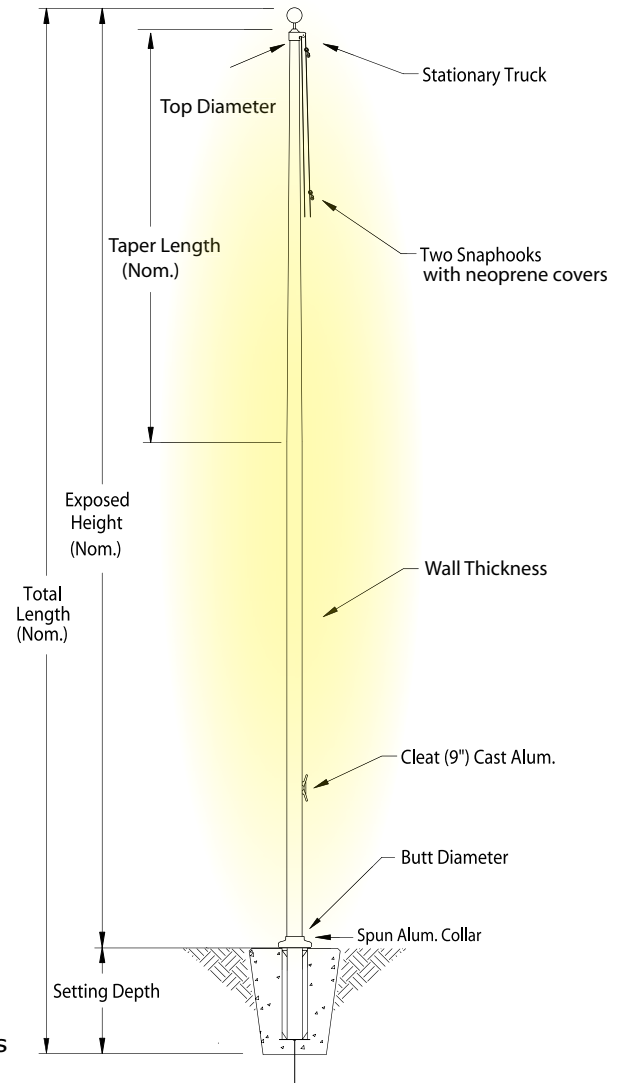
Flagpoles for Any Application

American Flagpole manufactures a wide variety of sizes in the following flagpole types as standard items. Many of these flagpoles are in stock and ready to ship.

Courtyard Series - External Halyard - Single Stationary Truck (ESS)

Groundset Foundation with exposed nominal heights from 15-35 feet

The Courtyard Series Flagpoles cater to larger residential homes, small businesses and apartment complexes. These flagpoles are an economical version of our Architectural Elite Series and are manufactured with the same high quality standard.



Standard Features include:

- Gold anodized aluminum ball
- Single Stationary truck assembly with aluminum pulley
- #10 waterproof braided polypropylene halyard
- Chrome plated bronze swivel snaphooks
- Neoprene snaphook covers
- 9" aluminum cleat
- PVC ground sleeve tube
- Flash Collar

Optional Features:

- Locking cleat covers / halyard covers
- Shoebase

Catalog Number	Exp. Hgt. Nom.	Taper Nom.	Butt Dia.	Top Dia.	Wall Thick.	Set Depth	Pole Sect.	Ship Wgt.	Max Flag Size	Max. Wind Speed w/Flag	Max. Wind Speed unflagged	Price
ESS15B31	15'	6' 3"	3"	1 7/8"	.125"	1' 6"	1	48	3' x 5'	120+mph	165 mph	
ESS20B31	20'	6' 3"	3"	1 7/8"	.125"	2' 0"	1	60	5' x 8'	85 mph	120 mph	
ESS20B41	20'	11' 0"	4"	3"	.125"	2' 0"	1	82	5' x 8'	105 mph	145 mph	
ESS25B31	25'	6' 3"	3"	1 7/8"	.125"	2' 6"	1	75	5' x 8'	68 mph	91 mph	
ESS25B41	25'	11' 0"	4"	3"	.125"	2' 6"	1	88	5' x 8'	85 mph	110 mph	
ESS30B41	30'	11' 0"	4"	3"	.125"	3' 0"	1	106	6' x 10'	70 mph	88 mph	
ESS30B42	30'	11' 0"	4"	3"	.125"	3' 0"	2	106	6' x 10'	70 mph	88 mph	
ESS30B51	30'	11' 0"	5"	3"	.125"	3' 0"	1	128	6' x 10'	85 mph	105 mph	
ESS30B52	30'	11' 0"	5"	3"	.125"	3' 0"	2	128	6' x 10'	85 mph	105 mph	
ESS35B51	35'	11' 0"	5"	3"	.125"	3' 6"	1	149	6' x 10'	70 mph	85 mph	
ESS35B52	35'	11' 0"	5"	3"	.125"	3' 6"	2	149	6' x 10'	70 mph	85 mph	



Architectural Elite Series - External Halyard - Single Revolving Truck (ESR) Groundset Foundation with exposed nominal heights from 20-80 feet

Our Architectural Elite Series Flagpoles are the most heavy-duty tapered aluminum poles available. Our high quality hardware meets the most stringent architectural standards in the construction industry. These flagpoles are designed to enhance the landscape of any business or industrial property.

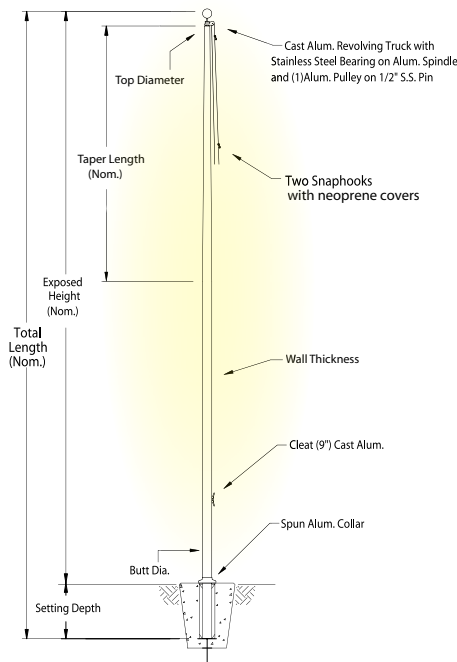
Standard Features

include:

- Gold anodized aluminum ball
- Single revolving truck assembly with aluminum pulley
- #10 waterproof braided polypropylene halyard
- Chrome plated bronze swivel snaphooks
- Neoprene snaphook covers
- 9" aluminum cleat
- Spun aluminum flash collar to match pole
- Galvanized corrugated steel ground sleeve with grounding spike

Optional Features:

- Double halyard system
- Locking cleat covers / halyard covers
- Shoebase



Catalog Number	Exp. Hgt. Nom.	Taper Nom.	Butt Dia.	Top Dia.	Wall Thick.	Set Depth	Pole Sect.	Ship Wgt.	Max Flag Size	Max. Wind Speed w/Flag	Max. Wind Speed unflagged	Price
ESR20B41	20'	11' 0"	4"	3"	.125"	2' 0"	1	82	5' x 8'	109 mph	150 mph	
ESR20B51	20'	11' 0"	5"	3"	.125"	2' 0"	1	97	5' x 8'	120+ mph	250 mph	
ESR20D51	20'	11' 0"	5"	3"	.188"	2' 0"	1	119	5' x 8'	120+ mph	300 mph	
ESR25B41	25'	11' 0"	4"	3"	.125"	2' 6"	1	105	5' x 8'	85 mph	110 mph	
ESR25B51	25'	11' 0"	5"	3"	.125"	2' 6"	1	117	5' x 8'	105 mph	154 mph	
ESR25C51	25'	11' 0"	5"	3"	.156"	2' 6"	1	131	5' x 8'	120 mph	201 mph	
ESR25D51	25'	11' 0"	5"	3"	.188"	2' 6"	1	146	5' x 8'	120+ mph	225 mph	
ESR25C61	25'	13' 9"	6"	3 1/2"	.156"	2' 6"	1	155	5' x 8'	120+ mph	250 mph	
ESR25D61	25'	13' 9"	6"	3 1/2"	.188"	2' 6"	1	186	5' x 8'	120+ mph	275 mph	
ESR30B41	30'	11' 0"	4"	3"	.125"	3' 0"	1	116	6' x 10'	70 mph	85 mph	
ESR30B42	30'	11' 0"	4"	3"	.125"	3' 0"	2	116	6' x 10'	70 mph	85 mph	
ESR30B51	30'	11' 0"	5"	3"	.125"	3' 0"	1	138	6' x 10'	85 mph	106 mph	
ESR30B52	30'	11' 0"	5"	3"	.125"	3' 0"	2	138	6' x 10'	85 mph	106 mph	
ESR30C51	30'	11' 0"	5"	3"	.156"	3' 0"	1	155	6' x 10'	94 mph	125 mph	
ESR30C52	30'	11' 0"	5"	3"	.156"	3' 0"	2	155	6' x 10'	94 mph	125 mph	
ESR30D51	30'	11' 0"	5"	3"	.188"	3' 0"	1	173	6' x 10'	100 mph	190 mph	
ESR30D52	30'	11' 0"	5"	3"	.188"	3' 0"	2	173	6' x 10'	100 mph	190 mph	
ESR30C61	30'	13' 9"	6"	3 1/2"	.156"	3' 0"	1	188	6' x 10'	119 mph	190 mph	
ESR30C62	30'	13' 9"	6"	3 1/2"	.156"	3' 0"	2	188	6' x 10'	119 mph	190 mph	
ESR30D61	30'	13' 9"	6"	3 1/2"	.188"	3' 0"	1	209	6' x 10'	120+ mph	217 mph	
ESR30D62	30'	13' 9"	6"	3 1/2"	.188"	3' 0"	2	209	6' x 10'	120+ mph	217 mph	
ESR35B51	35'	11' 0"	5"	3"	.125"	3' 6"	1	149	6' x 10'	71 mph	86 mph	
ESR35B52	35'	11' 0"	5"	3"	.125"	3' 6"	2	149	6' x 10'	71 mph	86 mph	
ESR35C61	35'	13' 9"	6"	3 1/2"	.156"	3' 6"	1	218	6' x 10'	95 mph	129 mph	
ESR35C62	35'	13' 9"	6"	3 1/2"	.156"	3' 6"	2	218	6' x 10'	95 mph	129 mph	
ESR35C71	35'	19' 3"	7"	3 1/2"	.156"	3' 6"	1	234	6' x 10'	120 mph	183 mph	
ESR35C72	35'	19' 3"	7"	3 1/2"	.156"	3' 6"	2	234	6' x 10'	120 mph	183 mph	
ESR35D71	35'	19' 3"	7"	3 1/2"	.188"	3' 6"	1	261	6' x 10'	120+ mph	206 mph	
ESR35D72	35'	19' 3"	7"	3 1/2"	.188"	3' 6"	2	261	6' x 10'	120+ mph	206 mph	
ESR40C72	40'	19' 3"	7"	3 1/2"	.156"	4' 0"	2	277	8' x 12'	95 mph	138 mph	
ESR40C82	40'	22' 0"	8"	4"	.156"	4' 0"	2	321	8' x 12'	117 mph	172 mph	
ESR40D82	40'	22' 0"	8"	4"	.188"	4' 0"	2	342	8' x 12'	120+ mph	193 mph	
ESR45D82	45'	22' 0"	8"	4"	.188"	4' 6"	2	385	8' x 12'	110 mph	160 mph	
ESR50D83	50'	22' 0"	8"	4"	.188"	5' 0"	3	395	10' x 15'	90 mph	127 mph	
ESR50D13	50'	33' 0"	10"	4"	.188"	5' 0"	3	488	10' x 15'	125 mph	180 mph	
ESR60D13	60'	33' 0"	10"	4"	.188"	6' 0"	3	612	12' x 18'	93 mph	130 mph	
ESR60F13	60'	33' 0"	10"	4"	.250"	6' 0"	3	684	12' x 18'	110 mph	150 mph	
ESR60F23	60'	52' 4"	12"	4"	.250"	6' 0"	3	700	12' x 18'	120+ mph	197 mph	
ESR70G13	70'	60' 0"	10"	4"	.312"	7' 0"	3	791	15' x 25'	95 mph	130 mph	
ESR70F23	70'	60' 0"	12"	4"	.250"	7' 0"	3	889	15' x 25'	113 mph	163 mph	
ESR80H24	80'	60' 0"	12"	4"	.375"	8' 0"	4	1198	20' x 30'	113 mph	160 mph	



Flagpoles & Flagpole Accessories

Colonial V-Cleat™ Series - Internal Halyard - Single Stationary Truck (IVC)

Groundset Foundation with exposed nominal heights from 15-35 feet

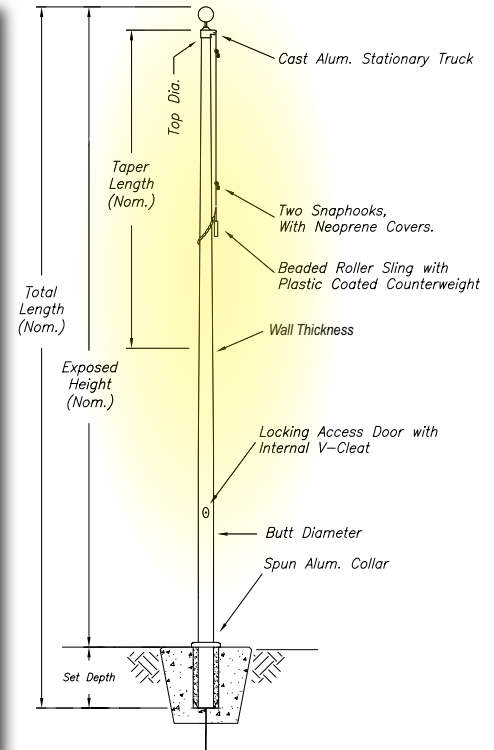
The sleek look and security of an internal halyard pole has been combined with the simplicity of a rope halyard to make the Colonial V-Cleat™ flagpole an economical alternative to other internal halyard systems. This patented "V" shaped cleat, secured behind a locked access door, holds the polypropylene rope at any flag height. The halyard runs up the inside of the pole from the V-Cleat, through the truck (pulley/cap assembly) and over a pulley to the outside of the pole where snap hooks, a counter weight and retainer ring are attached.

Standard Features include:

- Gold anodized aluminum ball
- Single stationary truck assembly with aluminum pulley
- #10 waterproof braided polypropylene halyard
- Chrome plated bronze swivel snaphooks
- Neoprene snaphook covers
- Beaded sling assembly
- Plastic covered counterweight
- Locking access door with Internal V-Cleat
- Spun aluminum flash collar to match pole
- PVC Sleeve for heights 15' - 30'
- Galvanized corrugated steel ground sleeve with grounding spike for 30' x 6" thru 35' heights

Optional Features:

- Shoebase



Catalog Number	Exp. Hgt. Nom.	Taper Nom.	Butt Dia.	Top Dia.	Wall Thick.	Set Depth	Pole Sect.	Ship Wgt.	Max Flag Size	Max. Wind Speed w/ Flag	Max. Wind Speed unflagged	Price
IVC15B31	15'	6' 3"	3"	1 7/8"	.125"	1' 6"	1	97	3' x 5'	120 mph	165 mph	
IVC20B31	20'	6' 3"	3"	1 7/8"	.125"	2' 0"	1	119	4' x 6'	90 mph	120 mph	
IVC20B41	20'	11' 0"	4"	3"	.125"	2' 0"	1	125	4' x 6'	110 mph	150 mph	
IVC25B41	25'	11' 0"	4"	3"	.125"	2' 6"	1	163	4' x 6'	80 mph	100 mph	
IVC25B51	25'	11' 0"	5"	3"	.125"	2' 6"	1	179	4' x 6'	100 mph	135 mph	
IVC30B41	30'	11' 0"	4"	3"	.125"	3' 0"	1	155	4' x 6'	65 mph	80 mph	
IVC30B42	30'	11' 0"	4"	3"	.125"	3' 0"	2	155	4' x 6'	65 mph	80 mph	
IVC30B51	30'	11' 0"	5"	3"	.125"	3' 0"	1	188	5' x 8'	80 mph	95 mph	
IVC30B52	30'	11' 0"	5"	3"	.125"	3' 0"	2	188	5' x 8'	80 mph	95 mph	
IVC30C61	30'	13' 9"	6"	3 1/2"	.156"	3' 0"	1	209	5' x 8'	110 mph	175 mph	
IVC30C62	30'	13' 9"	6"	3 1/2"	.156"	3' 0"	2	209	5' x 8'	110 mph	175 mph	
IVC35C61	35'	13' 9"	6"	3 1/2"	.156"	3' 6"	1	218	5' x 8'	85 mph	105 mph	
IVC35C62	35'	13' 9"	6"	3 1/2"	.156"	3' 6"	2	218	5' x 8'	85 mph	105 mph	
IVC35C71	35'	19' 3"	7"	3 1/2"	.156"	3' 6"	1	234	5' x 8'	110 mph	165 mph	
IVC35C72	35'	19' 3"	7"	3 1/2"	.156"	3' 6"	2	234	5' x 8'	110 mph	165 mph	



Internal Halyard - Cam Cleat (ICC)

Groundset Foundation with exposed nominal heights from 20-40 feet

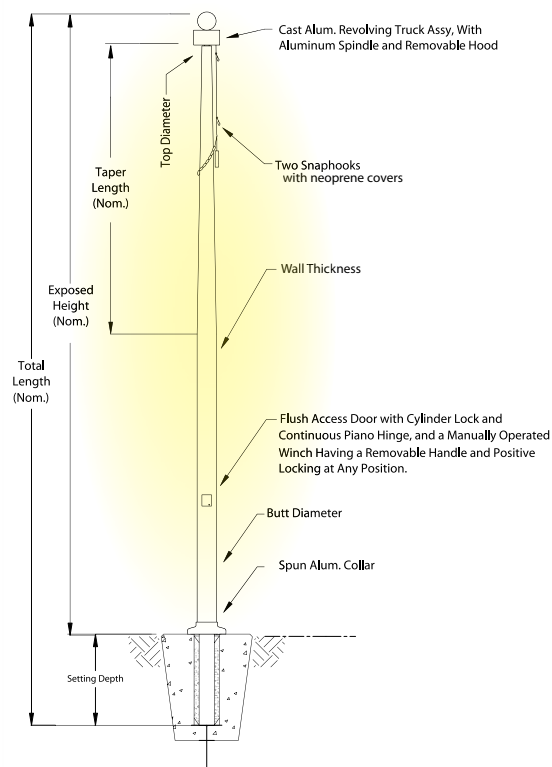
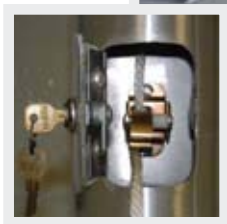
When security is a concern our Architectural Internal Halyard Series Flagpoles are the choice in the flagpole industry. We offer the economical rope internal halyard/cam cleat systems. Internal halyard flagpoles are also the most aesthetically pleasing because the halyard is concealed inside the pole. The lockable door provides the owner with a 24-7 sense of security.

Standard Features include:

- Gold anodized aluminum ball
- Revolving truck assembly with stainless steel ball bearings
- #10 waterproof braided polypropylene halyard
- Neoprene snaphook covers
- Chrome plated bronze swivel snaphooks
- Beaded sling assembly
- Plastic covered counterweights
- Manually operated cam cleat
- Flush access door with lock and piano hinge
- Spun aluminum flash collar to match pole
- Galvanized corrugated steel ground sleeve with grounding spike

Optional Features:

- Shoebase



Catalog Number	Exp. Hgt. Nom.	Taper Nom.	Butt Dia.	Top Dia.	Wall Thick.	Set Depth	Pole Sect.	Ship Wgt.	Max Flag Size	Max. Wind Speed w/Flag	Max. Wind Speed unflagged	Price
ICC20B51	20'	11' 0"	5"	2 1/2"	.125"	2' 0"	1	97	5' x 8'	119 mph	215 mph	
ICC20D51	20'	11' 0"	5"	2 1/2"	.188"	2' 0"	1	119	5' x 8'	120+ mph	290 mph	
ICC25B51	25'	11' 0"	5"	2 1/2"	.125"	2' 6"	1	117	5' x 8'	90 mph	118 mph	
ICC25C51	25'	11' 0"	5"	2 1/2"	.156"	2' 6"	1	131	5' x 8'	100 mph	201 mph	
ICC25C61	25'	13' 9"	6"	3 1/2"	.156"	2' 6"	1	163	5' x 8'	120+ mph	230 mph	
ICC25D61	25'	13' 9"	6"	3 1/2"	.188"	2' 6"	1	179	5' x 8'	120+ mph	255 mph	
ICC30C51	30'	11' 0"	5"	2 1/2"	.156"	3' 0"	1	155	5' x 8'	80 mph	97 mph	
ICC30C52	30'	11' 0"	5"	2 1/2"	.156"	3' 0"	2	155	5' x 8'	80 mph	97 mph	
ICC30C61	30'	13' 9"	6"	3 1/2"	.156"	3' 0"	1	188	6' x 10'	98 mph	150 mph	
ICC30C62	30'	13' 9"	6"	3 1/2"	.156"	3' 0"	2	188	6' x 10'	98 mph	150 mph	
ICC30D61	30'	13' 9"	6"	3 1/2"	.188"	3' 0"	1	209	6' x 10'	110 mph	180 mph	
ICC30D62	30'	13' 9"	6"	3 1/2"	.188"	3' 0"	2	209	6' x 10'	110 mph	180 mph	
ICC35C61	35'	13' 9"	6"	3 1/2"	.156"	3' 6"	1	218	6' x 10'	80 mph	100 mph	
ICC35C62	35'	13' 9"	6"	3 1/2"	.156"	3' 6"	2	218	6' x 10'	80 mph	100 mph	
ICC35C71	35'	19' 3"	7"	3 1/2"	.156"	3' 6"	1	234	6' x 10'	103 mph	153 mph	
ICC35C72	35'	19' 3"	7"	3 1/2"	.156"	3' 6"	2	234	6' x 10'	103 mph	153 mph	
ICC35D71	35'	19' 3"	7"	3 1/2"	.188"	3' 6"	1	261	6' x 10'	115 mph	180 mph	
ICC35D72	35'	19' 3"	7"	3 1/2"	.188"	3' 6"	2	261	6' x 10'	115 mph	180 mph	
ICC40C72	40'	19' 3"	7"	3 1/2"	.156"	3' 6"	2	277	6' x 10'	84 mph	107 mph	
ICC40D82	40'	22' 0"	8"	4"	.188"	4' 0"	2	345	8' x 12'	114 mph	173 mph	



Flagpoles & Flagpole Accessories

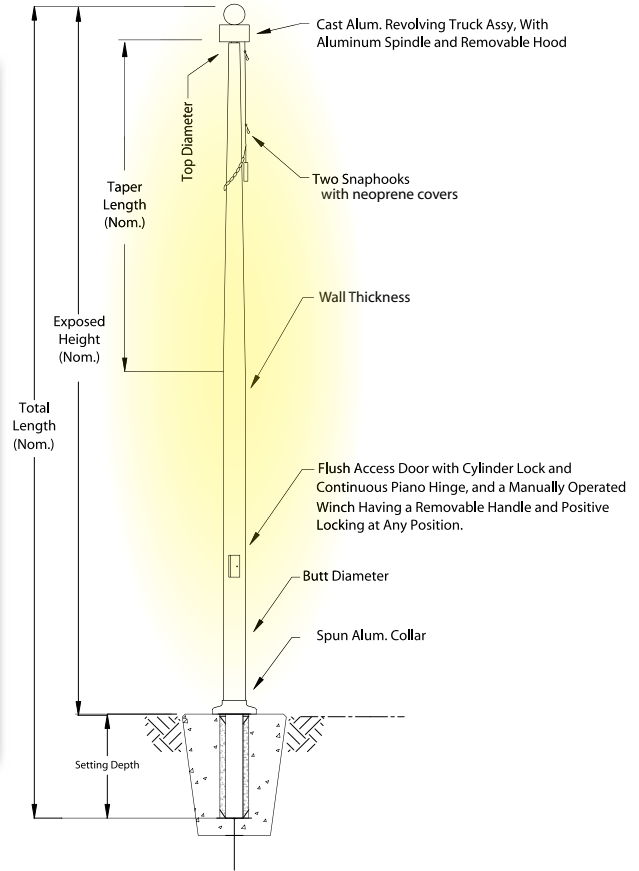
Internal Halyard - with Winch (IWW)

Groundset Foundation with exposed nominal heights from 20-80 feet

When your project calls for extreme security our heavy-duty cable/winch system will meet any commercial, municipal, governmental or industrial application. These poles are more streamlined in appearance because the halyard is concealed inside of the pole. The lockable door provides the owner with the 24-7 sense of security.

Standard Features include:

- Gold Anodized Aluminum Ball
- Revolving truck assembly with stainless steel bearings
- Revolving truck assembly with stainless steel sealed bearings for flagpoles taller than 45'
- Stainless steel aircraft cable halyard
- Chrome plated bronze swivel snaphooks
- Neoprene snaphook covers
- Beaded sling assembly
- Plastic covered counterweights
- Stainless steel winch assembly, with removable hand crank for poles of 6" to 8" butt diameters. Steel winch assembly, with removable hand crank used for 8" to 12" butt diameters.
- Flush access door with lock and piano hinge
- Spun aluminum flash collar to match pole
- Galvanized corrugated steel ground sleeve with grounding spike



Optional Features:

- Shoebase

Catalog Number	Exp. Hgt. Nom.	Taper Nom.	Butt Dia.	Top Dia.	Wall Thick.	Set Depth	Pole Sect.	Ship Wgt.	Max Flag Size	Max. Wind Speed w/Flag	Max. Wind Speed unflagged	Price
IWW20D61	20'	13' 9"	6"	3 1/2"	.188"	2' 0"	1	154	4' x 6'	180 mph	200+ mph	
IWW25D61	25'	13' 9"	6"	3 1/2"	.188"	2' 6"	1	181	4' x 6'	129 mph	200+ mph	
IWW30C61	30'	13' 9"	6"	3 1/2"	.156"	3' 0"	1	193	5' x 8'	85 mph	105 mph	
IWW30C62	30'	13' 9"	6"	3 1/2"	.156"	3' 0"	2	193	5' x 8'	85 mph	105 mph	
IWW30D61	30'	13' 9"	6"	3 1/2"	.188"	3' 0"	1	214	5' x 8'	93 mph	124 mph	
IWW30D62	30'	13' 9"	6"	3 1/2"	.188"	3' 0"	2	214	5' x 8'	93 mph	124 mph	
IWW35C61	35'	13' 9"	6"	3 1/2"	.156"	3' 6"	1	223	5' x 8'	70 mph	80 mph	
IWW35C62	35'	13' 9"	6"	3 1/2"	.156"	3' 6"	2	223	5' x 8'	70 mph	80 mph	
IWW35C71	35'	19' 3"	7"	3 1/2"	.156"	3' 6"	1	239	5' x 8'	90 mph	115 mph	
IWW35C72	35'	19' 3"	7"	3 1/2"	.156"	3' 6"	2	239	5' x 8'	90 mph	115 mph	
IWW35D71	35'	19' 3"	7"	3 1/2"	.188"	3' 6"	1	266	5' x 8'	100 mph	140 mph	
IWW35D72	35'	19' 3"	7"	3 1/2"	.188"	3' 6"	2	266	5' x 8'	100 mph	140 mph	
IWW40C72	40'	19' 3"	7"	3 1/2"	.156"	4' 0"	2	282	5' x 8'	74 mph	87 mph	
IWW40C82	40'	22' 0"	8"	4"	.156"	4' 0"	2	347	6' x 10'	90 mph	123 mph	
IWW40D82	40'	22' 0"	8"	4"	.188"	4' 0"	2	347	6' x 10'	102 mph	145 mph	
IWW45D82	45'	22' 0"	8"	4"	.188"	4' 6"	2	390	5' x 8'	80 mph	95 mph	
IWW50D83	50'	22' 0"	8"	4"	.188"	5' 0"	3	400	5' x 8'	67 mph	75 mph	
IWW50D13	50'	33' 0"	10"	4"	.188"	5' 0"	3	488	6' x 10'	105 mph	135 mph	
IWW60D13	60'	33' 0"	10"	4"	.188"	6' 0"	3	612	6' x 10'	75 mph	90 mph	
IWW60F13	60'	33' 0"	10"	4"	.250"	6' 0"	3	684	8' x 12'	90 mph	115 mph	
IWW60F23	60'	52' 4"	12"	4"	.250"	6' 0"	3	700	8' x 12'	135 mph	170 mph	
IWW70G13	70'	52' 0"	10"	4"	.312"	7' 0"	3	796	8' x 12'	80 mph	95 mph	
IWW70F23	70'	60' 0"	12"	4"	.250"	7' 0"	3	894	10' x 15'	95 mph	125 mph	
IWW80H24	80'	60' 0"	12"	4"	.375"	8' 0"	4	1198	10' x 15'	100 mph	125 mph	



Nautical Single Mast (NSM)

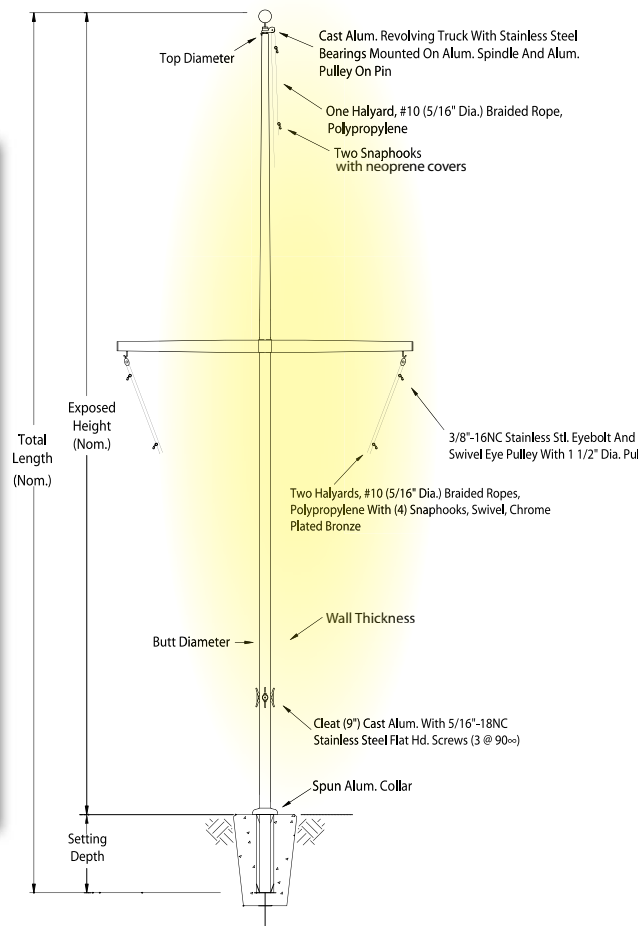
Groundset Foundation with exposed nominal heights from 25-80 feet

Standard Features include:

- Gold anodized aluminum ball
- Single revolving truck assembly with aluminum pulley
- Eyhook mounted single pulleys on yardarm
- Three 9" cast aluminum cleats
- #10 waterproof braided polypropylene halyard
- Chrome plated bronze swivel snaphooks
- Neoprene snaphook covers
- Spun aluminum flash collar to match pole
- Galvanized corrugated steel ground sleeve with grounding spike

Optional Features:

- Shoebase
- Gaff
- Double Halyard System



Catalog Number	Exp. Hgt. Nom.	Taper Nom.	Butt Dia.	Top Dia.	Wall Thick.	Set Depth	Pole Sect.	Ship Wgt.	Yardarm Length	Price
NSM25B51	25'	11' 0"	5"	3"	.125"	2' 6"	1	136	8' 0"	
NSM25C51	25'	11' 0"	5"	3"	.156"	2' 6"	1	150	8' 0"	
NSM30B51	30'	11' 0"	5"	3"	.125"	3' 0"	1	164	8' 0"	
NSM30B52	30'	11' 0"	5"	3"	.125"	3' 0"	2	164	8' 0"	
NSM30C51	30'	11' 0"	5"	3"	.156"	3' 0"	1	181	8' 0"	
NSM30C52	30'	11' 0"	5"	3"	.156"	3' 0"	2	181	8' 0"	
NSM30C61	30'	13' 9"	6"	3 1/2"	.156"	3' 0"	1	250	8' 0"	
NSM30C62	30'	13' 9"	6"	3 1/2"	.156"	3' 0"	2	250	8' 0"	
NSM30D61	30'	13' 9"	6"	3 1/2"	.188"	3' 0"	1	235	8' 0"	
NSM30D62	30'	13' 9"	6"	3 1/2"	.188"	3' 0"	2	235	8' 0"	
NSM35C61	35'	13' 9"	6"	3 1/2"	.156"	3' 6"	1	250	9' 6"	
NSM35C62	35'	13' 9"	6"	3 1/2"	.156"	3' 6"	2	250	9' 6"	
NSM35C71	35'	19' 3"	7"	3 1/2"	.156"	3' 6"	1	265	9' 6"	
NSM35C72	35'	19' 3"	7"	3 1/2"	.156"	3' 6"	2	265	9' 6"	
NSM35D71	35'	19' 3"	7"	3 1/2"	.188"	3' 6"	1	293	9' 6"	
NSM35D72	35'	19' 3"	7"	3 1/2"	.188"	3' 6"	2	293	9' 6"	
NSM40C72	40'	19' 3"	7"	3 1/2"	.156"	4' 0"	2	312	10' 9"	
NSM40C82	40'	22' 0"	8"	4"	.156"	4' 0"	2	355	10' 9"	
NSM40D82	40'	22' 0"	8"	4"	.188"	4' 0"	2	377	10' 9"	
NSM45D82	45'	22' 0"	8"	4"	.188"	4' 6"	2	424	12' 0"	
NSM50D83	50'	22' 0"	8"	4"	.188"	5' 0"	3	436	13' 6"	
NSM50D13	50'	33' 0"	10"	4"	.188"	5' 0"	3	529	13' 6"	
NSM60D13	60'	33' 0"	10"	4"	.188"	6' 0"	3	664	16' 0"	
NSM60F13	60'	33' 0"	10"	4"	.250"	6' 0"	3	735	16' 0"	
NSM60F23	60'	52' 4"	12"	4"	.250"	6' 0"	3	752	16' 0"	
NSM70G14	70'	33' 0"	10"	4"	.312"	7' 0"	4	849	18' 9"	
NSM70F24	70'	52' 4"	12"	4"	.250"	7' 0"	4	950	18' 9"	
NSM80H15	80'	33' 0"	10"	4"	.375"	8' 0"	5	1275	18' 9"	



Single Mast Nautical with a Gaff

Optional Accessory: Call factory for gaff sizes available.



Flagpoles & Flagpole Accessories

Nautical Double Mast (NDM)

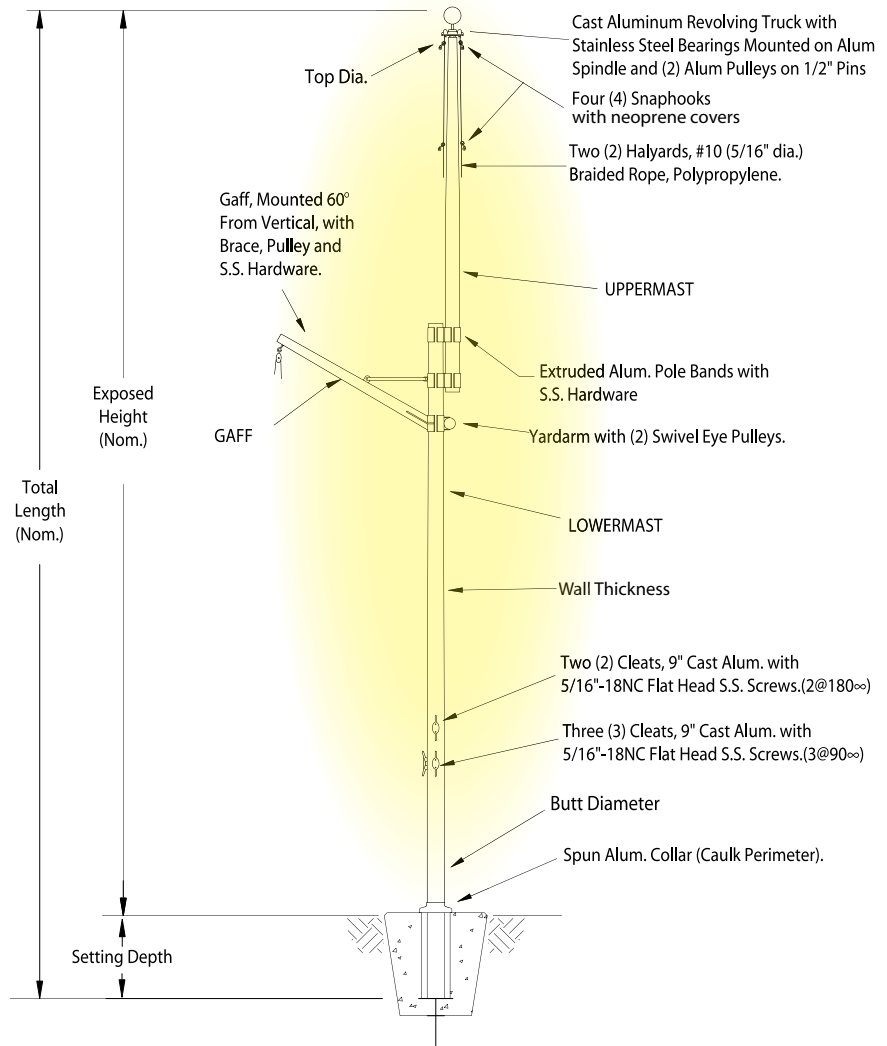
Groundset Foundation with exposed nominal heights from 25-80 feet

Standard Features include:

- Gold anodized aluminum ball
- Double revolving truck assembly with aluminum pulley
- Eyehook mounted single pulleys on gaff
- Eyehook mounted single pulleys on yardarm
- Five 9" cast aluminum cleats (NDM)
- #10 waterproof braided polypropylene halyard
- Chrome plated bronze swivel snaphooks
- Neoprene snaphook covers
- Spun aluminum flash collar to match pole
- Galvanized corrugated steel ground sleeve with grounding spike

Optional Features:

- Shoebase



Catalog Number	Exp. Hgt. Nom.	Taper Nom.	Butt Dia.	Top Dia.	Wall Thick.	Set Depth	Pole Sect.	Ship Wgt.	Yardarm Length	Gaff Length	Price
NDM30D61	30'	13' 9"	6"	3 1/2"	.188"	3' 0"	1	238	8' 0"	5' 0"	
NDM30D62	30'	13' 9"	6"	3 1/2"	.188"	3' 0"	2	238	8' 0"	5' 0"	
NDM35D71	35'	19' 3"	7"	3 1/2"	.188"	3' 6"	1	272	9' 6"	6' 0"	
NDM35D72	35'	19' 3"	7"	3 1/2"	.188"	3' 6"	2	272	9' 6"	6' 0"	
NDM40D82	40'	22' 0"	8"	4"	.188"	4' 0"	2	364	10' 9"	7' 0"	
NDM45D82	45'	22' 0"	8"	4"	.188"	4' 6"	2	485	12' 0"	8' 0"	
NDM50D83	50'	22' 0"	8"	4"	.188"	5' 0"	3	560	13' 6"	9' 0"	
NDM60F23	60'	52' 4"	12"	4"	.250"	6' 0"	3	1045	16' 0"	10' 9"	
NDM80H25	80'	52' 4"	12"	4"	.500"	8' 0"	5	1350	18' 9"	12' 9"	

Counterbalance (CSR)

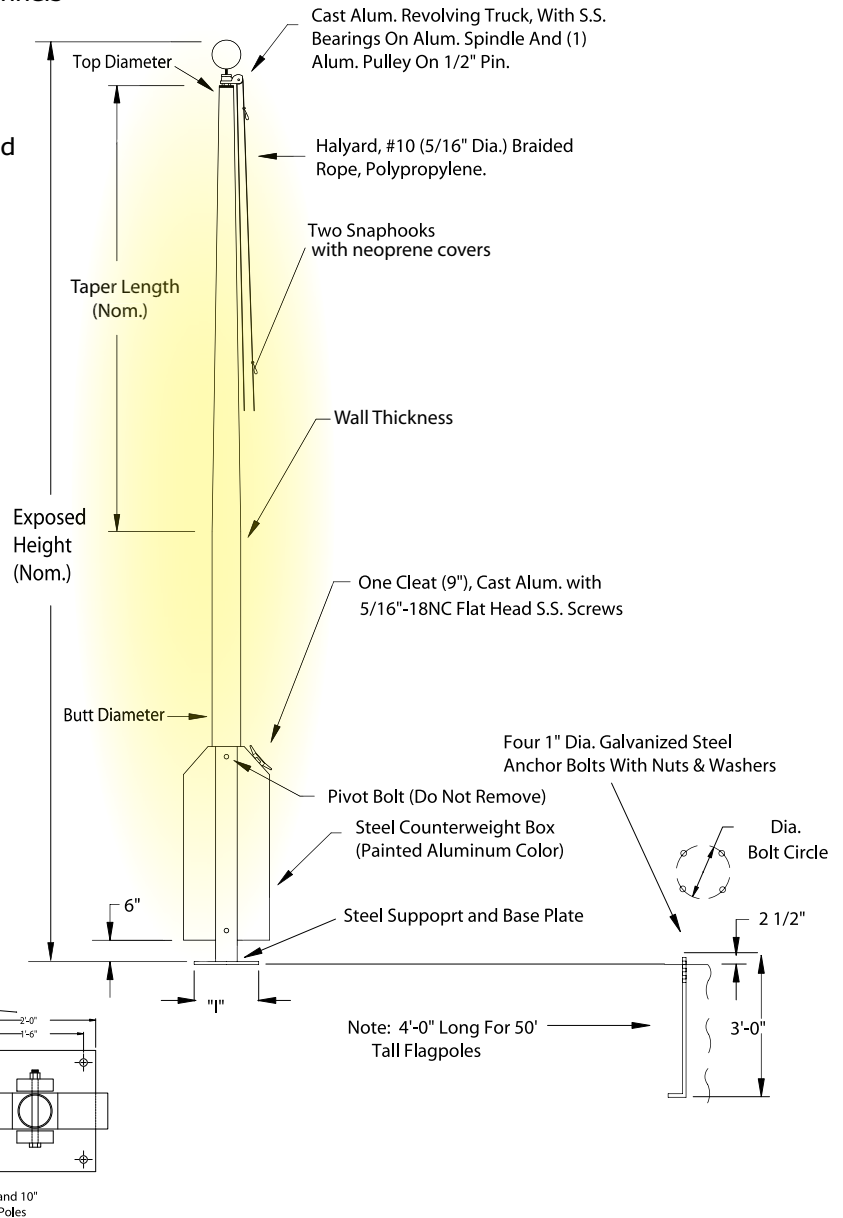
Steel Plate Foundation with exposed nominal heights from 30-50 feet

Standard Features include:

- Gold anodized aluminum ball
 - Single revolving truck assembly with aluminum pulley
 - Steel counterweight box, base plate and support channels
 - #10 waterproof braided polypropylene halyard
 - Chrome plated bronze swivel snaphooks
 - Neoprene snaphook covers
 - Spun aluminum flash collar to match pole
 - 9" cast aluminum cleat
- (Balance weight for counterweight box will be furnished by others)

Optional Features:

- Double Halyard



Catalog Number	Exp. Hgt. Nom.	Taper Nom.	Butt Dia.	Top Dia.	Wall Thick.	Base Plate Width	Pole Sect.	Ship Wgt.	Price
CSR30D61	30'	13' 9"	6"	3 1/2"	.188"	1' 8"	1	655	
CSR30D62	30'	13' 9"	6"	3 1/2"	.188"	1' 8"	2	655	
CSR35D71	35'	19' 3"	7"	3 1/2"	.188"	2' 0"	1	765	
CSR35D72	35'	19' 3"	7"	3 1/2"	.188"	2' 0"	2	765	
CSR40D82	40'	22' 0"	8"	4"	.188"	2' 0"	2	830	
CSR45D82	45'	22' 0"	8"	4"	.188"	2' 0"	2	855	
CSR50D82	50'	22' 0"	8"	4"	.188"	2' 0"	2	2015	
CSR50D12	50'	33' 0"	10"	4"	.188"	2' 0"	2	2085	

Steel Flagpole Series (SPW)

Groundset Foundation with exposed nominal heights from 100-150 feet

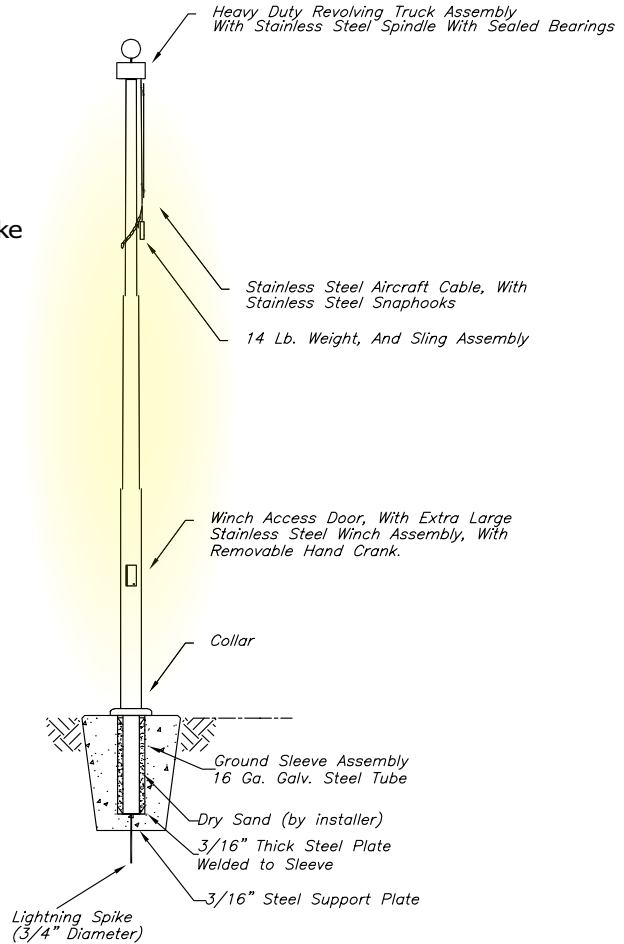
When your project calls for the largest flagpole available, American Flagpole is the choice. These steel flagpoles begin with heights of 100'.

Standard Features include:

- Gold Anodized Aluminum Ball
- Stainless steel aircraft cable halyard
- Chrome plated bronze swivel snaphooks
- Neoprene snaphook covers
- Beaded sling assembly
- Plastic covered counterweights
- Stainless steel winch assembly, with removable hand crank
- Flush access door with cylinder lock and piano hinge
- Spun aluminum flash collar to match pole
- Galvanized corrugated steel ground sleeve with grounding spike

Optional Features:

- Shoebase



NOTE: FOUNDATION DESIGN NOT INCLUDED. FOUNDATION DIMENSIONS SHOULD BE DETERMINED BY A QUALIFIED ENGINEER FAMILIAR WITH SITE SOIL CONDITIONS.



Catalog Number	Exp. Hgt. Nom.	Butt Dia.	Top Dia.	Wall Thick.	Set Depth	Pole Sect.	Ship Wgt.	Max. Flag Size	Max. Wind Speed w/Flag	Max. Wind Speed unflagged	Price
SPW100H	100'	12.75"	4.5"	.375"	10'	3	3733	30' x 50'	85 mph	105 mph	
SPW100I	100'	14"	6.625"	.500"	10'	3	5393	30' x 50'	90 mph	130 mph	
SPW120H	120'	16"	6.625"	.375"	12'	4	6091	30' x 50'	85 mph	105 mph	
SPW120I	120'	16"	6.625"	.500"	12'	4	7957	30' x 50'	90 mph	130 mph	
SPW130H	130'	18"	6.625"	.375"	13'	4	7456	30' x 50'	85 mph	105 mph	
SPW130I	130'	18"	6.625"	.500"	13'	4	9804	30' x 60'	90 mph	130 mph	
SPW140H	140'	20"	6.625"	.375"	14'	5	8906	30' x 50'	85 mph	105 mph	
SPW140I	140'	20"	6.625"	.500"	14'	5	11496	30' x 60'	90 mph	130 mph	
SPW150H	150'	20"	6.625"	.500"	15'	5	9876	30' x 50'	85 mph	105 mph	
SPW150I	150'	24"	6.625"	.500"	15'	5	13397	30' x 60'	90 mph	130 mph	



Outrigger (OSS)

Wall mount foundation with exposed nominal heights from 6-20 feet

Standard Features include:

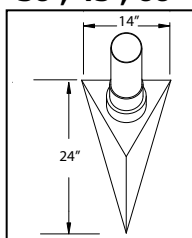
- Gold Anodized Aluminum Ball
- Cast aluminum single stationary truck assembly with aluminum pulley
- #10 waterproof braided polypropylene halyard
- Chrome plated bronze swivel snaphooks
- Neoprene snaphook covers
- 3/8" eyebolt and fixed double pulley
- 9" cast aluminum cleat
- Choice of aluminum wall mounts (see below)

Optional Features:

- Wall anchorage kit
- Locking cleat covers



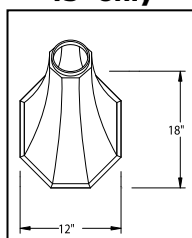
30°, 45°, 60°



0111*



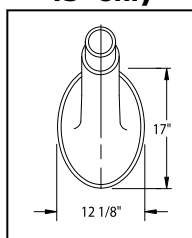
45° only



0104



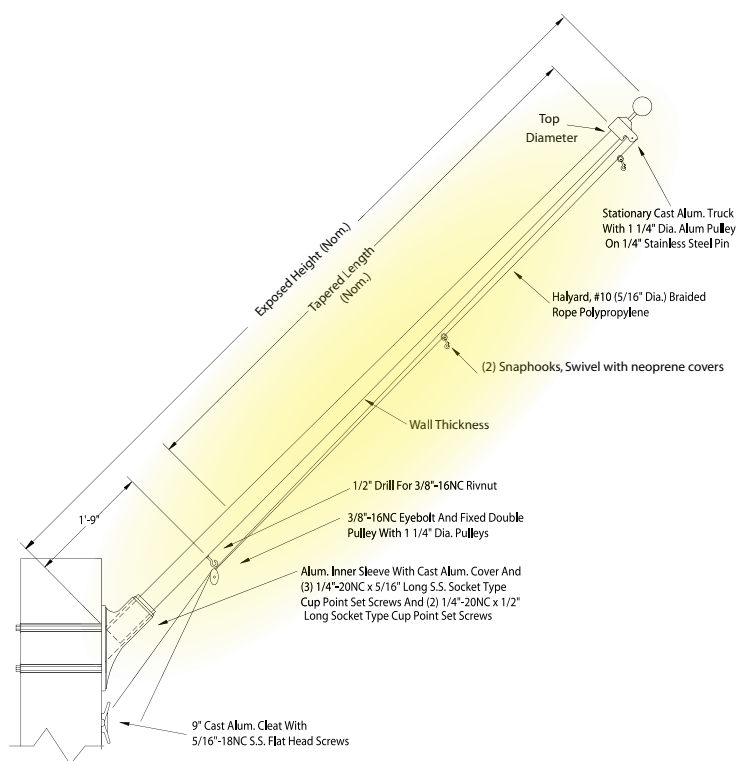
45° only



0100A



Photo Not Available



Catalog Number	Anchorage Style	Exp. Hgt.	Butt Dia.	Wall Thick.	Pole Sect.	Ship Wgt.	Price
OSS6D4X-**	0111 Series*	6'	4"	.188"	1	41	
OSS8D4X-**	0111 Series*	8'	4"	.188"	1	46	
OSS10D4X-**	0111 Series*	10'	4"	.188"	1	51	
OSS12D4X-**	0111 Series*	12'	4"	.188"	1	57	
OSS14D4X-**	0111 Series*	14'	4"	.188"	1	62	
OSS15D4X-**	0111 Series*	15'	4"	.188"	1	65	
OSS16D4X-**	0111 Series*	16'	4"	.188"	1	67	
OSS18D4X-**	0111 Series*	18'	4"	.188"	1	72	
OSS20D4X-**	0111 Series*	20'	4"	.188"	1	77	
OSS6D4X-**	0100A Series 45	6'	4"	.188"	1	41	
OSS8D4X-**	0100A Series 45	8'	4"	.188"	1	46	
OSS10D4X-**	0100A Series 45	10'	4"	.188"	1	51	
OSS12D4X-**	0100A Series 45	12'	4"	.188"	1	57	
OSS14D4X-**	0100A Series 45	14'	4"	.188"	1	62	
OSS15D4X-**	0100A Series 45	15'	4"	.188"	1	65	
OSS16D4X-**	0100A Series 45	16'	4"	.188"	1	67	
OSS18D4X-**	0100A Series 45	18'	4"	.188"	1	72	
OSS20D4X-**	0100A Series 45	20'	4"	.188"	1	77	
OSS6D4X-**	0104 Series 45	6'	4"	.188"	1	41	
OSS8D4X-**	0104 Series 45	8'	4"	.188"	1	46	
OSS10D4X-**	0104 Series 45	10'	4"	.188"	1	51	
OSS12D4X-**	0104 Series 45	12'	4"	.188"	1	57	
OSS14D4X-**	0104 Series 45	14'	4"	.188"	1	62	
OSS15D4X-**	0104 Series 45	15'	4"	.188"	1	65	
OSS16D4X-**	0104 Series 45	16'	4"	.188"	1	67	
OSS18D4X-**	0104 Series 45	18'	4"	.188"	1	72	
OSS20D4X-**	0104 Series 45	20'	4"	.188"	1	77	



Flagpoles & Flagpole Accessories

Vertical Wall-Mount (VSS / VSR)

Wall mount foundation with exposed nominal heights from 15-35 feet

Standard Features include:

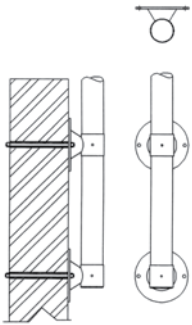
- Gold Anodized Aluminum Ball
- Cast aluminum single stationary or single revolving truck assembly with aluminum pulley
- #10 waterproof braided polypropylene halyard
- Chrome plated bronze swivel snaphooks
- Neoprene snaphook covers
- 9" cast aluminum cleat
- Choice of mounting brackets (see below)

Optional Features:

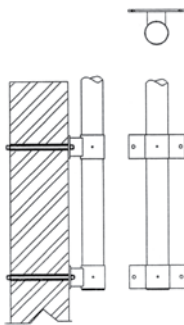
- Wall anchorage kit
- Locking cleat covers

Standard Mounting Brackets

WA-1

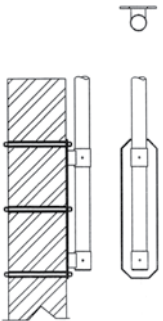


WA-3

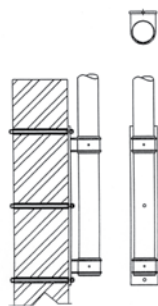


Optional Mounting Brackets

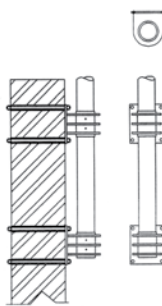
WA-2



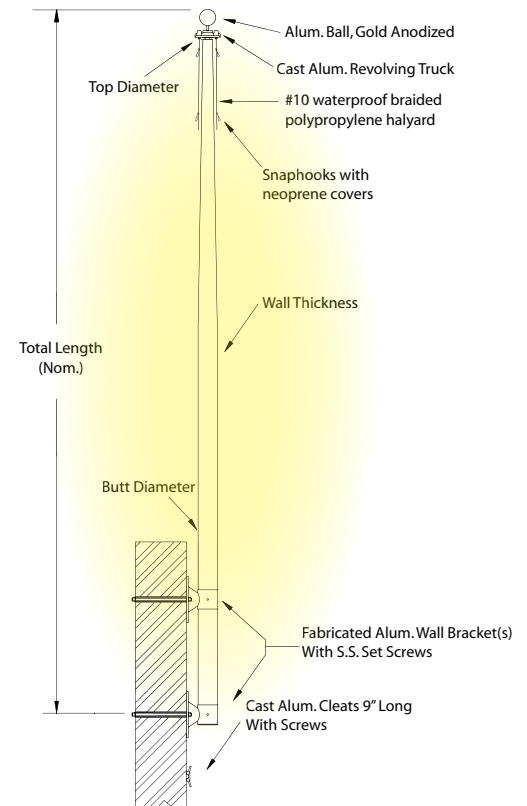
WA-8

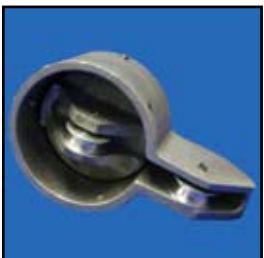


WA-9



Catalog Number	Anchorage Style	Expo Hgt. Nom.	Butt Dia.	Wall Thick.	Pole Sect.	Ship Wgt.	Price
VSS15B3X-**	Any Listed Mounting Option Above	15'	3"	.125"	1	31	
VSR20B4X-**		20'	4"	.125"	1	57	
VSR25C5X-**		25'	5"	.156"	1	80	
VSR30C6X-**		30'	6"	.156"	1	110	
VSR30C6Y-**		30'	6"	.156"	2	110	
VSR30D6X-**		30'	6"	.188"	1	125	
VSR30D6Y-**		30'	6"	.188"	2	125	
VSR35C6X-**		35'	6"	.156"	1	150	
VSR35C6Y-**		35'	6"	.156"	2	150	





External Halyard Stationary Trucks

Size/Description	Part Number
Stationary 1-7/8-2" Tapped 1/2"-13NC for finial	95750
Stationary 2-1/2" Tapped 1/2"-13NC for finial	95751-001
Stationary 2-1/2" Tapped 5/8"-11NC for finial	95751-002
Stationary 3" Tapped 1/2"-13NC for finial	95753-001
Stationary 3" Tapped 5/8"-11NC for finial	95753-002
Stationary 3-1/2" Tapped 1/2"-13NC for finial	95755-001
Stationary 3-1/2" Tapped 5/8"-11NC for finial	95755-002

External Halyard Revolving Trucks

Size/Description	Part Number
Single, 1-1/4" spindle, Tapped 1/2"-13NC for finial	96098-001
Single, 1-1/4" spindle, Tapped 5/8"-11NC for finial	96098-002
Single, Heavy Duty with sealed bearings, 1/2"-13NC	96099-001
Single, Heavy Duty with sealed bearings, 5/8"-11NC	96099-002
Double, 1-1/4" spindle, Tapped 1/2"-13NC for finial	96014-001
Double, 1-1/4" spindle, Tapped 5/8"-11NC for finial	96014-002
Double, Heavy Duty w/sealed bearings, 1/2"-13NC	96100-001
Double, Heavy Duty w/sealed bearings, 5/8"-11NC	96100-002
Nylon Pole Top Reducer, 1-1/2 to 1-1/4"	95182

Internal Halyard Stationary Cam Cleat Trucks

Size/Description	Part Number
Stationary, 2" Tapped 1/2"-13NC for finial	95695
Stationary, 2-1/2" Tapped 1/2"-13NC for finial	95752-001
Stationary, 2-1/2" Tapped 5/8"-11NC for finial	95752-002
Stationary, 3" Tapped 1/2"-13NC for finial	95754-001
Stationary, 3" Tapped 5/8"-11NC for finial	95754-002
Stationary, 3-1/2" Tapped 1/2"-13NC for finial	95756-001
Stationary, 3-1/2" Tapped 5/8"-11NC for finial	95756-002

Internal Halyard Revolving Trucks

Size/Description	Part Number
Internal w/cap, Standard Truck SS bearings for pole less than 45', Tapped for 1/2" - 13NC finial	97163-001
Internal w/cap, Standard Truck SS bearings for pole 45', Tapped for 5/8" - 11NC finial	97163-002
Internal w/cap, Sealed Bearing Truck for poles 45' or higher, Tapped for 1/2" - 13NC finial	97164-001
Internal w/cap, Sealed Bearing Truck for poles 45' or higher, Tapped for 1 5/8" - 11NC finial	97164-002
Internal w/cap, Cam Cleat Truck, Use with rope on Cam Cleat poles, Tapped for 1/2" - 13NC finial	97165-001
Internal w/cap, Cam Cleat Truck, Use with rope on Cam Cleat poles, Tapped for 5/8" - 11NC finial	97165-002

Pulley

Size/Description	Part Number
Single, Swivel w/eyebolt	91094
Double, Fixed w/eyebolt	91156



Flagpoles & Flagpole Accessories



Cleats

Size/Description	Part Number
6" Standard Finish	95368S
9" Standard Finish	90037S
9" Painted Finish	90037P-S
SS Cleat Screw (one) 5/16" - 18NC - 1 1/2"	90043
Self Tapping Cleat Screw 1/4" - 20NC - 2"	95829



Cleat Covers

Size/Description	Part Number
Cleat Cover w/Cyln. Lock and (2) 5/16" - 18" NC bolts for attachment to pole, 3" pole and above	96016
Cleat Cover for use with padlock; (2) 5/16" - 18" NC bolt for attachment to pole, 3" diameter poles and above (padlock not supplied)	96017
Halyard cover, 3" diameter poles and above	96153
Padlock with keys	PADLOCK
Replacement Lock	95595-006
Replacement Keys	95595-007



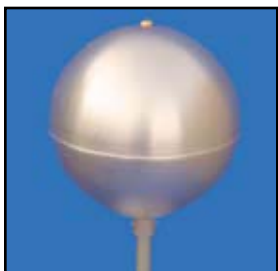
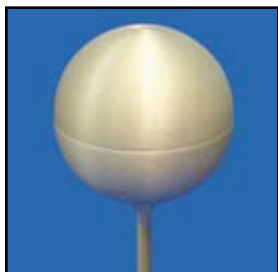
Cam Action Cleats

Size/Description	Part Number
Cam Cleat	92858
Cam Cleat mounting screw (1)	44964-001
Replacement Lock for Internal Halyard door (new compression style)	95645
Replacement Key	95646
Replacement Lock for Cam Cleat Door with keys (Flagpoles prior to Feb. 04)	91510



Winch

Size/Description	Part Number
Small w/o Handle 6"-8" (Stainless Steel)	95762
Large w/o Handle, Greater than 45' Exp. (Stainless Steel)	95763
Large w/Handle 8"-12" (Steel)	91717
Winch Handle for Stainless Steel winches	95757
Large Winch Handle	91757



Balls			
Size/Description	Satin	Gold Anodized	Gold Leaf
3" - 5/8" Rod	90039-001	90066-001	90084-001
4" - 5/8" Rod	90039-002	90066-002	90084-002
5" - 5/8" Rod	90039-003	90066-003	90084-003
6" - 5/8" Rod	90039-004	90066-004	90084-004
8" - 5/8" Rod	90039-005	90066-005	90084-005
10" - 5/8" Rod	90039-006	90066-006	90084-006
12" - 5/8" Rod	90039-007	90066-007	90084-007
14" - 5/8" Rod	90039-008	90066-008	90084-008
Size/Description	Clear Anodized	Gold Anodized	Gold Leaf
3" - 1/2" Rod	90065-001	90056-001	90084-011
4" - 1/2" Rod	90065-002	90056-002	90084-012
5" - 1/2" Rod	90065-003	90056-003	90084-013
6" - 1/2" Rod	90065-004	90056-004	90084-014
8" - 1/2" Rod	90065-005	90056-005	90084-015
10" - 1/2" Rod	90065-006	90056-006	90084-016
12" - 1/2" Rod	90065-007	90056-007	90084-017

Size/Description	Part Number
Botanee Cross, 8" 1/2"-13NC	95768

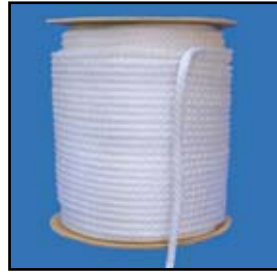
Balls - Stainless Steel	
Size/Description	Part Number
3" - 1/2" Rod	90121-011
4" - 1/2" Rod	90121-012
5" - 1/2" Rod	90121-013
6" - 1/2" Rod	90121-014
8" - 1/2" Rod	90121-015
10" - 1/2" Rod	90121-016
12" - 1/2" Rod	90121-017

Cast Aluminum Eagle on Ball	
Size/Description	Part Number
Eagle on Ball 11" Wing Span, 1 1/2" Rod	90827-011
Eagle on Ball 15" Wing Span, 1 1/2" Rod	90827-012
1/2" to 5/8" Thread Adapter 5/8" Rod	90992

Miscellaneous	
Size/Description	Part Number
3/8" Eyebolt	91096
3" Pole Top Adapter 1 1/4" Threads	95358
3 1/2" Pole Top Adapter 1 1/4" Threads	95359
4" Pole Top Adapter 1 1/4" Threads	95360
5/16 - 18 NC Drill & Tap Kit	KIT-DRLTAP5/16
Cylinder Light for up lighting w/o bulb (1)	91012
Wall Anchorage Kit	94210
Aluminum Cleaner OX-Out, One (1) gallon	79935
Touch up Paint - Specify Color	79079



Flagpoles & Flagpole Accessories



Bagged Cam Cleat Rope Assembly

Size/Description	Part Number
5/16" X 40' White Rope #10 Bagged	95956-040
5/16" X 40' Black Rope #10 Bagged	95956-040B
5/16" X 50' White Rope #10 Bagged	95956-050
5/16" X 50' Black Rope #10 Bagged	95956-050B
5/16" X 60' White Rope #10 Bagged	95956-060
5/16" X 60' Black Rope #10 Bagged	95956-060B
5/16" X 70' White Rope #10 Bagged	95956-070
5/16" X 70' Black Rope #10 Bagged	95956-070B
5/16" X 80' White Rope #10 Bagged	95956-080
5/16" X 80' Black Rope #10 Bagged	95956-080B
5/16" X 90' White Rope #10 Bagged	95956-090
5/16" X 90' Black Rope #10 Bagged	95956-090B
5/16" X 100' White Rope #10 Bagged	95956-100
5/16" X 100' Black Rope #10 Bagged	95956-100B



Non-Tangle Rod

Size/Description	Part Number
2.5' - For Flag Sizes: 3' x 5' or 4' x 6'	96171-001
5' - For Flag Sizes: 5' x 8' or 6' x 10'	96171-002
7' - For Flag Sizes: 8' x 12' or 10' x 15'	96171-003

Halyard

Size Description	Part Number
1/4" Poly White #8, lineal ft.	90072
1/4" x 40' Poly White #8, bagged	90055
5/16" Poly White #10, lineal ft.	90070
5/16" x 20' Poly White #10, bagged	90070-018
5/16" x 40' Poly White #10, bagged	90070-001
5/16" x 50' Poly White #10, bagged	90070-003
5/16" x 60' Poly White #10, bagged	90070-004
5/16" x 70' Poly White #10, bagged	90070-005
5/16" x 80' Poly White #10, bagged	90070-006
5/16" x 90' Poly White #10, bagged	90070-010
5/16" x 100' Poly White #10, bagged	90070-007
5/16" x 110' Poly White #10, bagged	90070-012
5/16" x 120' Poly White #10, bagged	90070-008
5/16" x 140' Poly White #10, bagged	90070-011
5/16" x 150' Poly White #10, bagged	90070-014
5/16" x 160' Poly White #10, bagged	90070-009
5/16" x 200' Poly White #10, bagged	90070-017
5/16", Galv. Steel Poly White #10/ft.	90942
3/8" Poly White #12, lineal ft.	91851
1/4" Nylon White #8, lineal ft.	90073
3/8" Nylon White #12, lineal ft.	91651
5/16", Galv. Steel Nylon White #10/ft.	92618
3/8", Galv. Steel Nylon White #12/ft.	93028
1/4" Poly Black #8, lineal ft.	90089
5/16" Poly Black #8, lineal ft.	90090
5/16" x 30' Poly Black #10, bagged	90090-015
5/16" x 40' Poly Black #10, bagged	90090-001
5/16" x 50' Poly Black #10, bagged	90090-003
5/16" x 60' Poly Black #10, bagged	90090-004
5/16" x 70' Poly Black #10, bagged	90090-005
5/16" x 80' Poly Black #10, bagged	90090-006
5/16" x 90' Poly Black #10, bagged	90090-010
5/16" x 100' Poly Black #10, bagged	90090-007
5/16" x 110' Poly Black #10, bagged	90090-012
5/16" x 120' Poly Black #10, bagged	90090-008
5/16" x 140' Poly Black #10, bagged	90090-011
5/16" x 160' Poly Black #10, bagged	90090-009
5/16" x 200' Poly Black #10, bagged	90090-017
5/16", Galv. Steel Poly Black #10, lineal ft.	93147
3/8" Poly Black #12, lineal ft.	92724
1/8" SS Cable, lineal ft.	90178
5/16" Poly Silver, lineal ft.	95530
1/4" Poly Silver, lineal ft.	96024
5/16" Brown Poly, lineal ft.	96052



Internal Halyard Stainless Steel Replacement Cable

Size/Description	Part Number
33' S.S. Cable, (15' Exp. Hght.)	93673-001
43' S.S. Cable, (20' Exp. Hght.)	93673-002
47' S.S. Cable, (22' Exp. Hght.)	93673-003
53' S.S. Cable, (25' Exp. Hght.)	93673-004
63' S.S. Cable, (30' Exp. Hght.)	93673-005
73' S.S. Cable, (35' Exp. Hght.)	93673-006
83' S.S. Cable, (40' Exp. Hght.)	93673-007
93' S.S. Cable, (45' Exp. Hght.)	93673-008
103' S.S. Cable, (50' Exp. Hght.)	93673-009
113' S.S. Cable, (55' Exp. Hght.)	93673-010
123' S.S. Cable, (60' Exp. Hght.)	93673-011
143' S.S. Cable, (70' Exp. Hght.)	93673-012
163' S.S. Cable, (80' Exp. Hght.)	93673-013



Complete Internal Halyard Assemblies

Size/Description	Part Number
15' Exp. Pole Height, 33' Cable	90172-013
20' Exp. Pole Height, 43' Cable	90172-001
22' Exp. Pole Height, 47' Cable	90172-002
25' Exp. Pole Height, 53' Cable	90172-003
30' Exp. Pole Height, 63' Cable	90172-004
35' Exp. Pole Height, 73' Cable	90172-005
40' Exp. Pole Height, 83' Cable	90172-006
45' Exp. Pole Height, 93' Cable	90172-010
50' Exp. Pole Height, 103' Cable	90172-007
55' Exp. Pole Height, 113' Cable	90172-012
60' Exp. Pole Height, 123' Cable	90172-008
70' Exp. Pole Height, 143' Cable	90172-009
80' Exp. Pole Height, 163' Cable	90172-011



Counterweight

Size/Description	Part Number
1 3/4" Dia., 3.5# weight, Plastic Coated (White)	CWTO35
1 3/4" Dia., 3.5# weight, Plastic Coated (Bronze)	CWTO35B
1 3/4" Dia., 7# weight, Plastic Coated (White)	94738
1 3/4" Dia., 7# weight, Plastic Coated (Bronze)	94738B
1 3/4" Dia., 14# weight, Plastic Coated (White)	CWT140
1 3/4" Dia., 14# weight, Plastic Coated (Bronze)	CWT140B



Beaded Retainer Sling

Size/Description	Part Number
39" Cable, White, 8" or 9" butt dia.	95700-001
47" Cable, White, 10" butt dia.	95700-002
55" Cable, White, 12" butt dia.	95700-003
39" Cable, Bronze tone, 8"/9" butt dia.	95700-004
47" Cable, Bronze tone, 10" butt dia.	95700-005
55" Cable, Bronze tone, 12" butt dia.	95700-006
27" Cable, White, 5" butt dia.	95700-007
31" Cable, White, 6" butt dia.	95700-008
35" Cable, White, 7" butt dia.	95700-009
27" Cable, Bronze tone, 5" butt dia.	95700-010
31" Cable, Bronze tone, 6" butt dia.	95700-011
35" Cable, Bronze tone, 7" butt dia.	95700-012





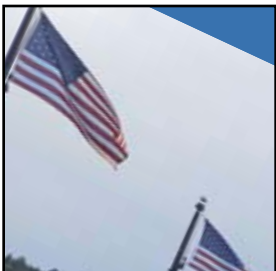
Flagpoles & Flagpole Accessories



Kits are available in white and satin finishes.



Kits are available in white and satin finishes.



Snaphooks

Size/Description	Part Number
3 1/2" Chrome Plated Bronze	90040
3 1/2" Solid Bronze	90828
2 3/8" Nylon / White	90054
2 3/8" Nylon / Black	90054B
4" Neoprene Cover White / Bronze	90088 / 90088B
3 1/4" S.S. Snaphooks	92257
4 3/4" S.S. Snaphooks	92899

American Spirit Accessories

Size/ Description	Part Number
Plain-Unswedged 2" x 56" (Top Section)	95309-001
Swedged - no drilling 2" x 56"	95309-002
Swedged - installed 6" cleat 2" x 56"	95309-002C
2" truck, Qty 1-5	95497
2" truck, Qty 6+	95497
6" cleat, Qty 1-5	95368S
6" cleat, Qty 6+	95368S
3" gold anodized ball, 1/2" rod	90056-001
40' halyard, bagged	90055
Ground Sleeve	95565
2 3/8" Nylon snaphook	90054

American Tradition Accessories

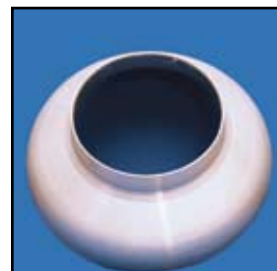
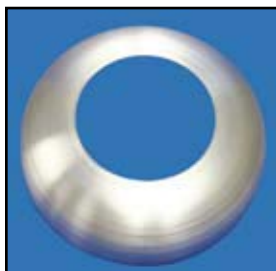
Size/Description	Part Number
Top Section 3" x 1 7/18" x 7' 8"	94837S
Middle & Bottom sections 3" x 7"	95476
6" Cleat w/screws	95368S
PVC Ground Sleeve	94123
40' Halyard, bagged	90055
3 1/2" Chrome Plated Snaphook	90040
Clear Silicone	93293

Colonial V-Cleat Conversion Kits

Size/Description	Part Number
Kit for 15' x 3" pole	IVC153K
Kit for 20' x 3" pole	IVC203K
Kit for 20' x 4" pole	IVC204K
Kit for 25' x 3" pole	IVC253K
Kit for 25' x 4" pole	IVC254K
Kit for 25' x 5" pole	IVC255K
Kit for 30' x 4" pole	IVC304K
Kit for 30' x 5" pole	IVC305K
Kit for 30' x 6" pole	IVC306K
Kit for 35' x 6" pole	IVC356K
Kit for 35' x 7" pole	IVC357K

Contents of Kit:

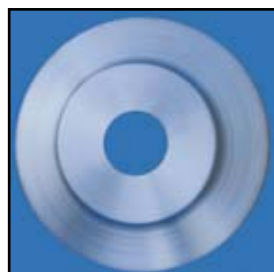
V-Cleat with screws, key lock door, instruction sheet, hole cutting template, internal halyard stationary truck, 2 snaphooks with covers, retaining sling, counterweight, gold anodized ball



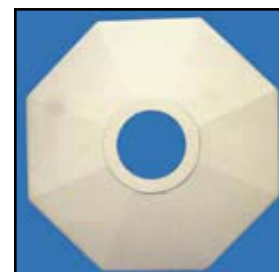
Standard Spun Collars	
Size/Description	Part Number
Aluminum, 2" shaft dia. 8 1/2" Dia. of collar, 2" collar hgt.	94508-014
Aluminum, 3" shaft dia. 8 1/2" Dia. of collar, 2" collar hgt.	94508-001
Aluminum, 3-1/2" shaft dia. 8 1/2" Dia. of collar, 2" collar hgt.	94508-010
Aluminum, 4" shaft dia. 8 1/2" Dia. of collar, 2" collar hgt.	94508-002
Aluminum, 4 1/2" shaft dia. 8 1/2" Dia. of collar, 2" collar hgt.	94508-011
Aluminum, 5" shaft dia. 12 1/2" Dia. of collar, 2" collar hgt.	94508-003
Aluminum, 5 1/2" shaft dia. 12 1/2" Dia. of collar, 2" collar hgt.	94508-012
Aluminum, 6" shaft dia. 12 1/2" Dia. of collar, 2" collar hgt.	94508-004
Aluminum, 7" shaft dia. 12 1/2" Dia. of collar, 2" collar hgt.	94508-005
Aluminum, 8" shaft dia. 17 1/2" Dia. of collar, 3" collar hgt.	94508-006
Aluminum, 9" shaft dia. 17 1/2" Dia. of collar, 3" collar hgt.	94508-007
Aluminum, 10" shaft dia. 17 1/2" Dia. of collar, 3" collar hgt.	94508-008
Aluminum, 12" shaft dia. 17 1/2" Dia. of collar, 3" collar hgt.	94508-009

Heavy Duty Spun Collars	
Size/Description	Part Number
Aluminum, 3" shaft dia. 8" dia. of collar, 2 1/2" collar hgt	90038-001
Aluminum, 3-1/2" shaft dia. 8 1/8" dia. of collar, 4 1/4" collar hgt	90038-011
Aluminum, 4" shaft dia. 11 1/2" dia. of collar, 4 3/8" collar hgt	90038-002
Aluminum, 4-1/2" shaft dia. 11 1/2" dia. of collar, 5" collar hgt	90038-003
Aluminum, 5" shaft dia. 11 1/2" dia. of collar, 4 1/2" collar hgt	90038-004
Aluminum, 5-1/2" shaft dia. 11 1/2" dia. of collar, 4 5/8" collar hgt	90038-005
Aluminum, 6" shaft dia. 12 3/4" dia. of collar, 4 3/4" collar hgt	90038-006
Aluminum, 7" shaft dia. 12 3/4" dia. of collar, 4 3/4" collar hgt	90038-007
Aluminum, 8" shaft dia. 15 1/2" dia. of collar, 4 3/4" collar hgt	90038-008
Aluminum, 9" shaft dia. 15 1/2" dia. of collar, 5" collar hgt	90038-014
Aluminum, 10" shaft dia. 18" dia. of collar, 5" collar hgt	90038-009
Aluminum, 12" shaft dia. 22" dia. of collar, 5 1/4" collar hgt	90038-010

Decorative Collars	
Size/Description	Part Number
Cast Aluminum, 5" - 8" shaft dia. 18" Dia. of collar, 12 1/2" collar hgt.	91027
Cast Aluminum, 6" - 8" shaft dia. 19 1/2" Dia. of collar, 3 3/4" collar hgt.	91135
Cast Aluminum, 6" - 12" shaft dia. 22" Dia. of collar, 1 3/4" collar hgt.	91099
Spun Aluminum, 5" - 12" shaft dia. 20", 22" 30" Dia. of collar, 4" - 6" collar hgt.	90104



90104



91135



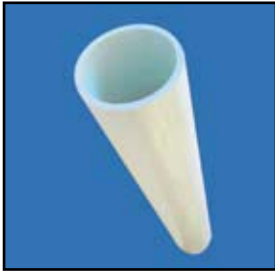
91099



91027

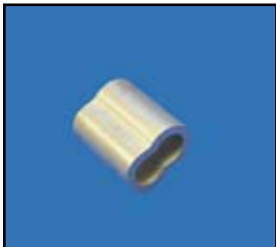


Flagpoles & Flagpole Accessories



Schedule 40 PVC Ground Sleeves

Size/ Description	Part Number
3" Butt Dia. Ref., 4" x 1'6"	94141-001
3" Butt Dia. Ref., 4" x 2'	94141-002
3" Butt Dia. Ref., 4" x 2'6"	94141-007
4" Butt Dia. Ref., 6" x 2'	94141-008
4" Butt Dia. Ref., 6" x 2'6"	94141-003
4" Butt Dia. Ref., 6" x 3'	94141-004
5" Butt Dia. Ref., 8" x 2'	94141-009
5" Butt Dia. Ref., 8" x 2'6"	94141-010
5" Butt Dia. Ref., 8" x 3'	94141-005
5" Butt Dia. Ref., 8" x 3'6"	94141-006



Miscellaneous

Size/Description	Part Number
1 7/8" x 1/2" Shackle (SS)	91410
2 3/4" Double Eye Swivel (GS)	90173
Thimble (SS) 1/8"	90179
Thimble (SS) 3/16"	95613
Splicing Sleeve	90176
Rope Wire Clamp (GS)	90277
Stop Sleeve	91305
I.H. Snaphook Assembly	94512
1" Nylon Ball Drilled (Natural White)	95614
1" Nylon Ball Drilled (Bronze)	95614B



Ground Sleeves w/Lighting Spike

Size/Description	Part Number
4" Butt Dia. Ref., 6" x 2'	90031-021
4" Butt Dia. Ref., 6" x 2'6"	90031-038
4" Butt Dia. Ref., 6" x 3'	90031-001
5" Butt Dia. Ref., 8" x 2'	90031-002
5" Butt Dia. Ref., 8" x 2'6"	90031-003
5" Butt Dia. Ref., 8" x 3'	90031-004
5" Butt Dia. Ref., 8" x 3'6"	90031-028
5" Butt Dia. Ref., 8" x 4'	90031-020
6" & 7" Butt Dia. Ref., 10" x 2'	90031-027
6" & 7" Butt Dia. Ref., 10" x 2'6"	90031-013
6" & 7" Butt Dia. Ref., 10" x 3'	90031-005
6" & 7" Butt Dia. Ref., 10" x 3'6"	90031-006
6" & 7" Butt Dia. Ref., 10" x 4'	90031-007
6" & 7" Butt Dia. Ref., 10" x 4'6"	90031-030
6" & 7" Butt Dia. Ref., 10" x 5'	90031-011
8" & 9" Butt Dia. Ref., 12" x 3'	90031-029
8" & 9" Butt Dia. Ref., 12" x 3'6"	90031-015
8" & 9" Butt Dia. Ref., 12" x 4'	90031-008
8" & 9" Butt Dia. Ref., 12" x 4'6"	90031-017
8" & 9" Butt Dia. Ref., 12" x 5'	90031-009
10" & 12" Butt Dia. Ref., 15" x 4'	90031-023
10" & 12" Butt Dia. Ref., 15" x 4'6"	90031-022
10" & 12" Butt Dia. Ref., 15" x 5'	90031-010
10" & 12" Butt Dia. Ref., 15" x 6'	90031-012
10" & 12" Butt Dia. Ref., 15" x 7'	90031-016
10" & 12" Butt Dia. Ref., 15" x 7'6"	90031-019
10" & 12" Butt Dia. Ref., 15" x 8'	90031-014

Lightning Rod Kit

Size/Description	Part Number
5/8" x 5'-0" long copper clad rod attached with 6'-0" x 1/2" aluminum ground cable. Drill kit and bolt for field attachment.	Kit-90190



U.S. Flags

Size/Description	Part Number
2' x 3' Embroidered Nylon	FLAG-US-01
3' x 5' Embroidered Nylon	FLAG-US-02
4' x 6' Embroidered Nylon	FLAG-US-03
5' x 8' Embroidered Nylon	FLAG-US-04
6' x 10' Embroidered Nylon	FLAG-US-05
8' x 12' Embroidered Nylon	FLAG-US-06
10' x 15' Embroidered Nylon	FLAG-US-08
12' x 18' Embroidered Nylon	FLAG-US-09
15' x 25' Embroidered Nylon	FLAG-US-10
20' x 30' Embroidered Nylon	FLAG-US-11
30' x 50' Embroidered Nylon	FLAG-US-12
3' x 5' Printed Nylon	FLAG-US-02-NP
4' x 6' Printed Nylon	FLAG-US-03-NP
5' x 8' Printed Nylon	FLAG-US-04-NP

Christian Flags

Size/Description	Part Number
3' x 5' Nylon	FLAG-CH-02
4' x 6' Nylon	FLAG-CH-03
5' x 8' Nylon	FLAG-CH-04
6' x 10' Nylon	FLAG-CH-05

State Flags

Size/ Description	Part Number
3' x 5' Nylon	FLAG-(State)-02
4' x 6' Nylon	FLAG-(State)-03
5' x 8' Nylon	FLAG-(State)-04
6' x 10' Nylon	FLAG-(State)-05

Example: 3' x 5' VA state flag part number FLAG-VA-02

AL, AK, AZ, AR, CA, CO, CT, DE, FL, GA, HI, ID, IL, IN, IA, KS, KY, LA, ME, MD, MA, MI, MN, MS, MO, MT, NE, NV, NG, NJ, NM, NY, NC, ND, OH, OK, OR, PA, RI, SC, SD, TN, TX, UT, VT, VA, WA, WV, WI, WY

A Brief Summary of Flag Etiquette:

- It is the universal custom to display the flag only from sunrise to sunset on buildings and on stationary flagstaffs in the open. However, when a patriotic effect is desired, the flag may be displayed twenty-four hours a day if properly illuminated during the hours of darkness.
- The flag should be hoisted briskly and lowered cautiously.
- The flag should not be displayed on days when the weather is inclement, except when an all weather flag is displayed.
- The flag should be displayed on all days, especially on New Year's Day, January 1; Inauguration Day, January 20; Lincoln's Birthday, February 12; Washington's Birthday, third Monday in February; Easter Sunday (variable); Mother's Day, second Sunday in May; Armed Forces Day, third Saturday in May; Memorial Day (half-staff until noon), the last Monday in May; Flag Day, June 14; Independence Day, July 4; Labor Day, first Monday in September; Constitution Day, September 17; Columbus Day, second Monday in October; Navy Day, October 27; Veterans Day, November 11; Thanksgiving Day, fourth Thursday in November; Christmas Day, December 25; and such other days as may be proclaimed by the President of the United States; the birthdays of States (date of admission) and on State holidays.
- The flag should be displayed daily, on or near the main administration building of every public institution.
- The flag should be displayed in or near every polling place on election days.
- The flag should be displayed during school days in or near every schoolhouse.

For more information about Flag Etiquette visit our website: www.americanflagpole.com

American Flagpole Number Description

A. GENERAL ASSEMBLY

ESS	External, Single Stationary
ESR	External, Single Revolving
EDR	External, Double Revolving
IVC	Internal Colonial V-Cleat
ICC	Internal, Cam Cleat
IWW	Internal, With Winch
NSM	Nautical, Single Mast
NDM	Nautical, Double Mast
CSR	Counterbalance, Single Revolving
CDR	Counterbalance, Double Revolving
OSS	Outrigger, Single Stationary
VSR	Vertical, Single Revolving
VDR	Vertical, Double Revolving
SPW	Steel, Internal, With Winch

B. NOMINAL EXPOSED HEIGHT

15	15 feet
20	20 feet
25	25 feet
30	30 feet
35	35 feet
40	40 feet
45	45 feet
50	50 feet
60	60 feet
70	70 feet
80	80 feet

D. BUTT DIAMETER

1	10 inches
2	12 inches
3	3 inches
4	4 inches
5	5 inches
6	6 inches
7	7 inches
8	8 inches
9	9 inches

F. COLOR (* Standard Color)

*02	Satin, 80 Grit
*AA	Anodize, Clear
*AB	Anodize, Light Bronze
*AC	Anodize, Medium Bronze
*AD	Anodize, Dark Bronze
*AE	Anodize, Black
*BZ	Powder Paint, Clear
BN	Powder Paint, Light Bronze
BO	Powder Paint, Medium Bronze
*BM	Powder Paint, Dark Bronze
*BA	Powder Paint, Black
*BH	Powder Paint, White
*BV	Powder Paint, Dark Green
*BE	Powder Paint, Gray
*EP	Powder Paint, Sparkle Silver

C. WALL THICKNESS

A	0.095 inches
B	0.125 inches
C	0.156 inches
D	0.188 inches
E	0.219 inches
F	0.250 inches
G	0.312 inches
H	0.375 inches
I	0.500 inches
X	16 gauge

E. SHAFT SECTIONS

1	1 piece, Groundset
2	2 piece, Groundset
3	3 piece, Groundset
4	4 piece, Groundset
5	5 piece, Groundset
M	1 piece, Shoebase
N	2 piece, Shoebase
P	3 piece, Shoebase
Q	4 piece, Shoebase
R	5 piece, Shoebase
X	1 piece, Wall Mount
Y	2 piece, Wall Mount

General Assembly	Exposed Height	Wall Thickness	Butt Dia.	Shaft Sections	Color
E S R	3 0	B	5	1	0 2

Standard Specifications:

Material: Alloy 6063-T6 aluminum tubing with uniform conical taper

Finish: Directional sanded satin ground, thermoset powder paint or anodized

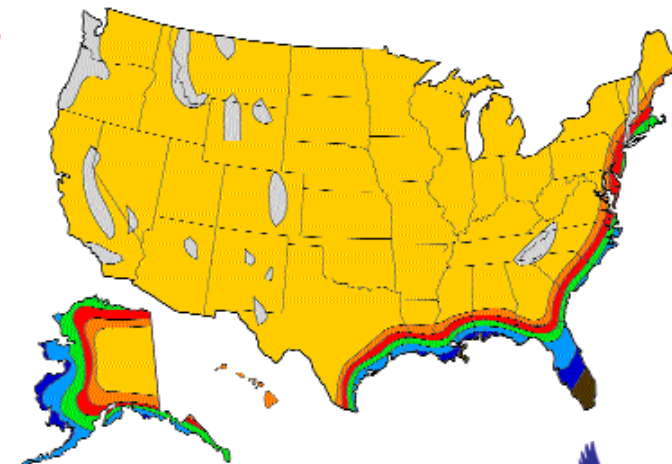
Foundation: Groundset, unless specified otherwise

Standard Warranty

Seller warrants to repair or replace, at seller's option, any equipment which fails due to a defect in material or workmanship within one year from the date of shipment, unless failure is due to improper installation, misapplication or failure to notify the common carrier of apparent or concealed damages in due time. This guarantee is limited to the repair or replacement of the material involved and does not include reimbursement for the expense of installation, removal of equipment, transportation or any other expense, which may be incurred. Authorization must be obtained from American Flagpole in Abingdon, Va., before any material is returned. Return, repair or replacement of material without prior approval from American Flagpole voids the warranty.

Basic Wind Speeds

Each flagpole we manufacture has been designed with wind speeds in mind. The wind chart below shows potential wind speeds for the United States. (Based on NAAMM Guide Specifications for Design of Metal Flagpoles).



Legend

90 V/MPH	100 V/MPH
110 V/MPH	120 V/MPH
130 V/MPH	140 V/MPH
150 V/MPH	Special Wind Region



SportsEdge
P.O. Box 837, 259 Murdock Rd.
Troutman, NC 28166

PH: 800-334-6057 • Fax: 704-528-0179
www.sportsedge.com