



FlexConnect

ATHLETIC FIELD UTILITY VAULT INSTALLATION, OPERATION & MAINTENANCE MANUAL

P.O. Box 837 - 259 Murdock Road - Troutman, NC 28166
Tel (704) 528-0188 - Fax (704) 528-0179 - www.sportsedge.com
Toll free in the USA, Canada, and Mexico (800) 334-6057
Email info@sportsedge.com

TABLE OF CONTENTS:

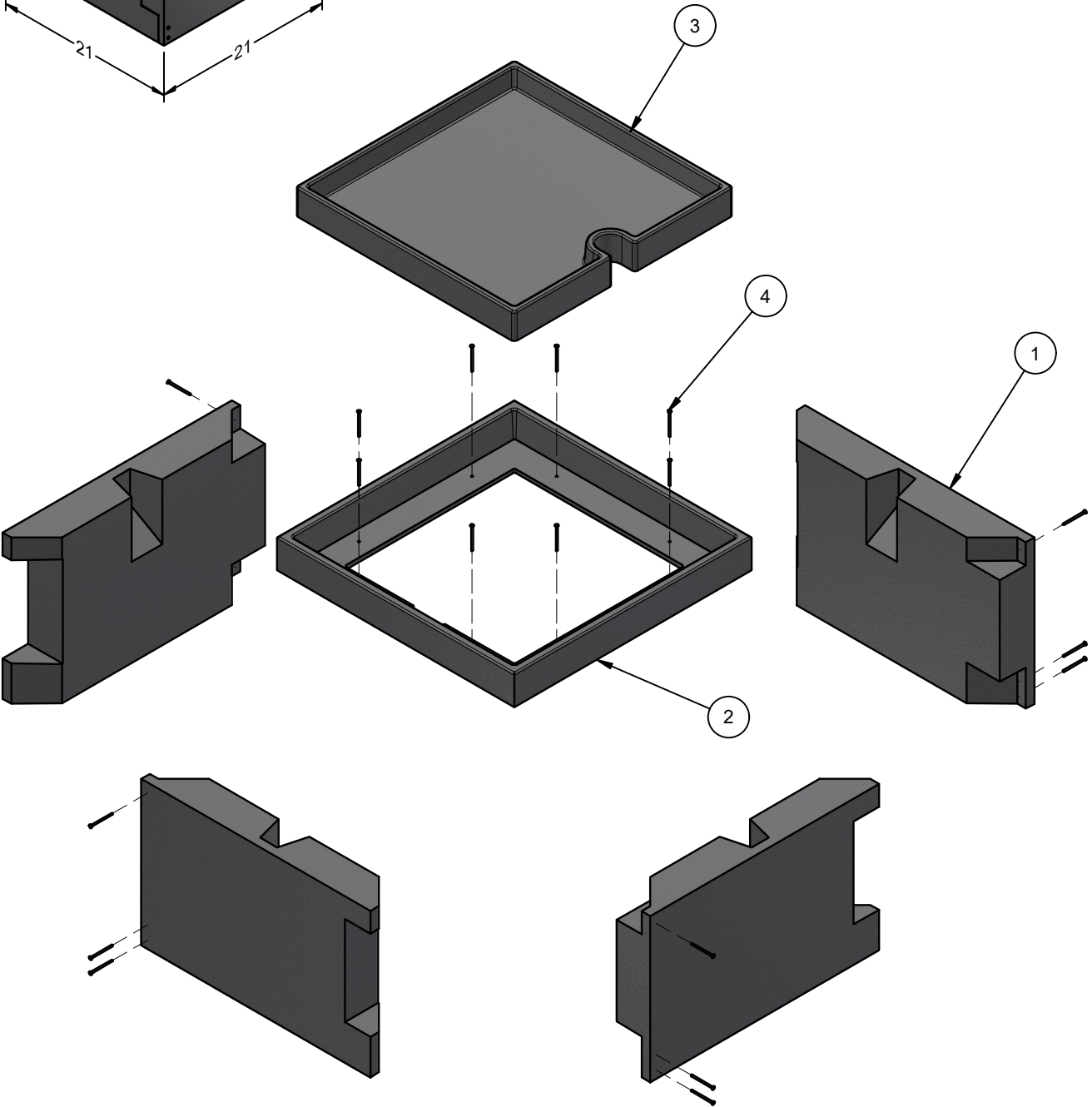
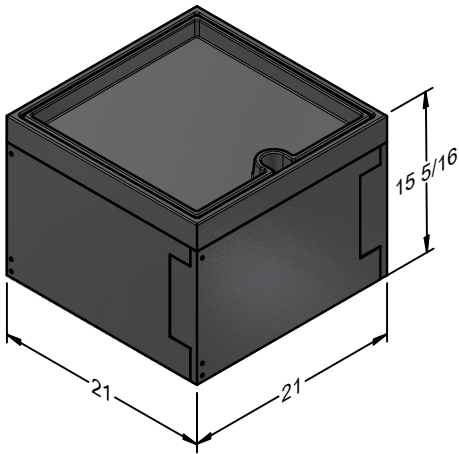
1.0 - Parts List	3
1.1 - SEF981 Infill Turf Utility Vault	3
1.2 - SEF982 Synthetic Surface Utility Vault	4
1.3 - SEF983 Factory Turf Wrapped Utility Vault	5
2.0 - Installation	6
2.1 - Useful or Req'd Tools	6
2.2 - Site Prep and Assembly	7
2.3 - Panel Assembly	8
2.4 - Final Alignment / Installation	9
3.0 - Maintenance / Replacement Parts	10

WARNING: READ ALL INSTRUCTIONS CAREFULLY AND COMPLETELY PRIOR TO INSTALLATION AND USE OF PRODUCT.. ASSEMBLY SHOULD BE COMPLETED BY TRAINED PERSONNEL WITH APPROPRIATE TOOLS AND PPE. INSTALLER SHOULD INSPECT ALL PARTS FOR DEFECTS PRIOR TO ASSEMBLY. ENSURE ALL FASTENERS ARE FIRMLY TIGHTENED PRIOR TO USE. FAILURE TO HEED THESE INSTRUCTIONS MAY RESULT IN PROPERTY DAMAGE AND/OR PHYSICAL INJURY.

1.1 - SEF981 - INFILL TURF UTILITY
VAULT

21" x 21" x 15 - 5/16"

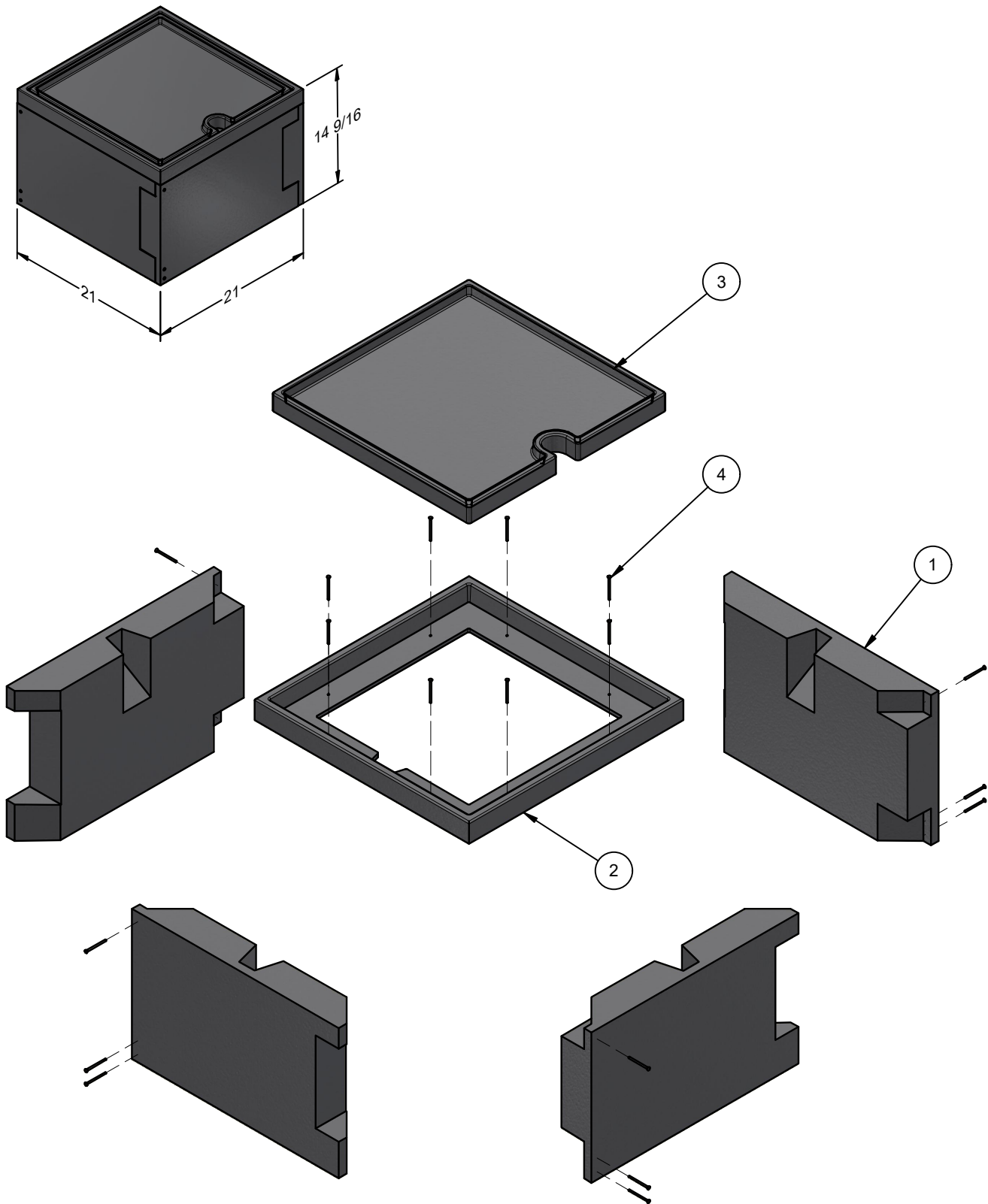
BILL OF MATERIAL			
ITEM	QTY	PART NUMBER	DESCRIPTION
1	4	SEF980R.S	Rubber Utility Box Side
2	1	SEF980R.F2	Frame for Infill Turf Cover
3	1	SEF980R.INFA	Infill Turf Cover
4	20	-	2.5" Long Multipurpose Screws



1.2 - SEF982 - UTILITY VAULT
FOR TRACK SURFACING

21" x 21" x 14 - 9/16"

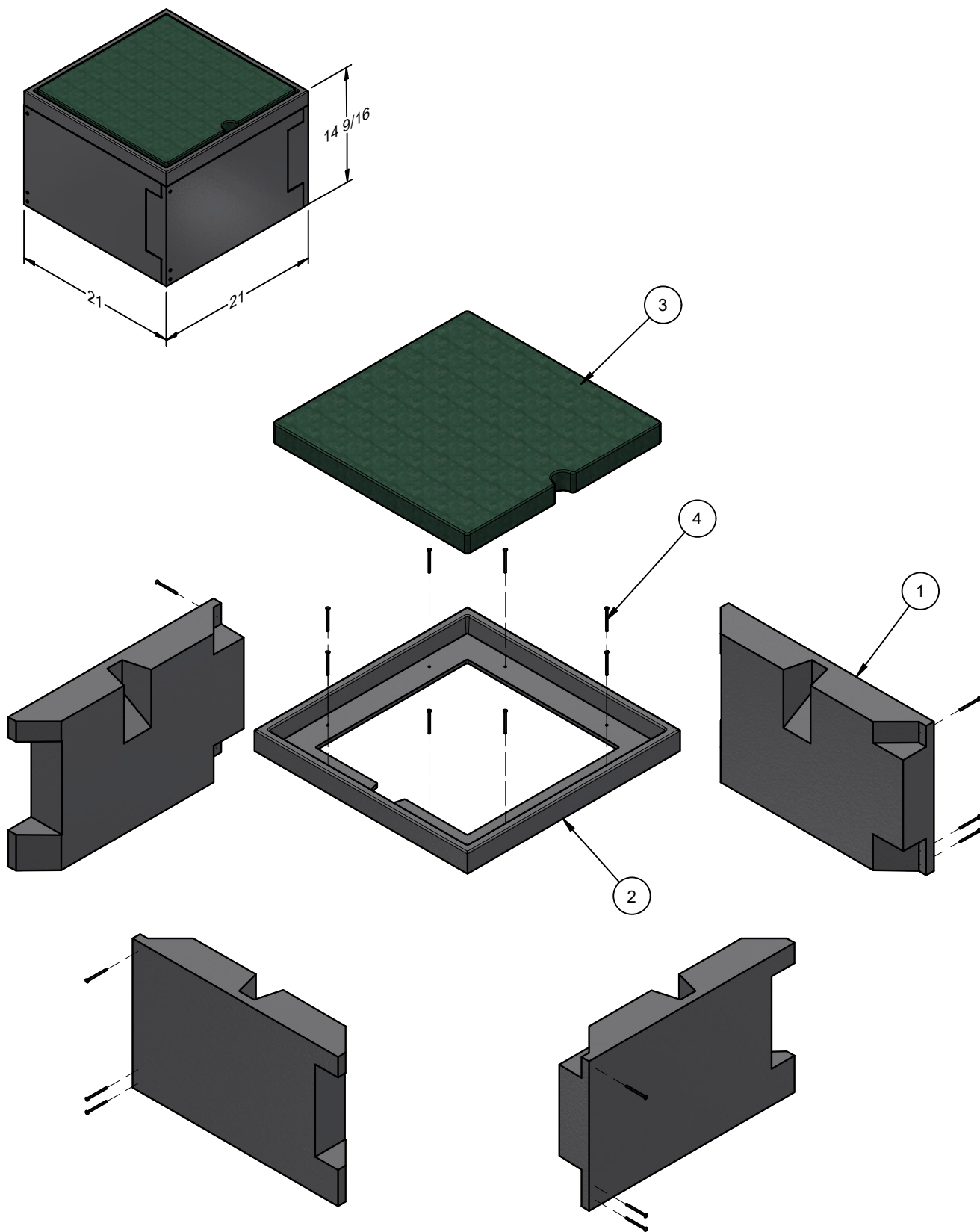
BILL OF MATERIAL			
ITEM	QTY	PART NUMBER	DESCRIPTION
1	4	SEF980R.S	Rubber Utility Box Side
2	1	SEF980R.F1	Frame for Wrapped/Track Cover
3	1	SEF980R.TCA	Track Surface Cover
4	20	-	2.5" Long Multipurpose Screws



1.3 - SEF983 - FACTORY TURF WRAPPED UTILITY VAULT 21" x 12" x 14 - 9/16"

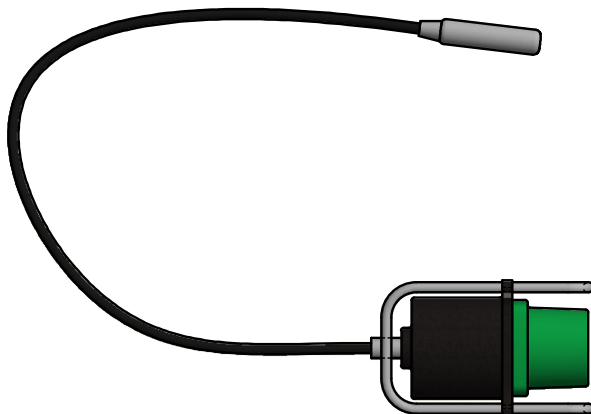
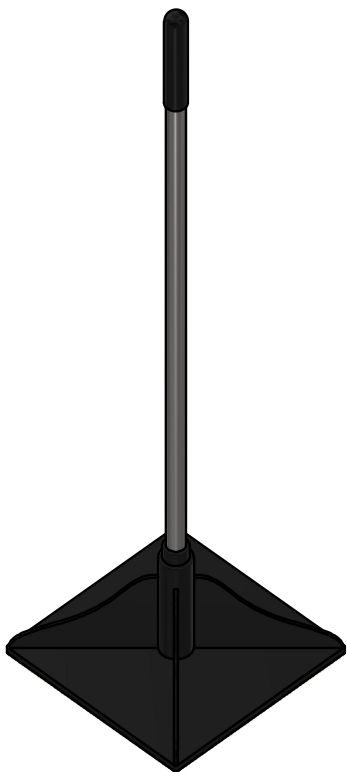
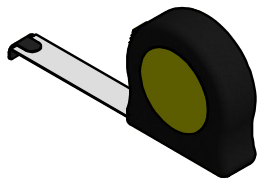
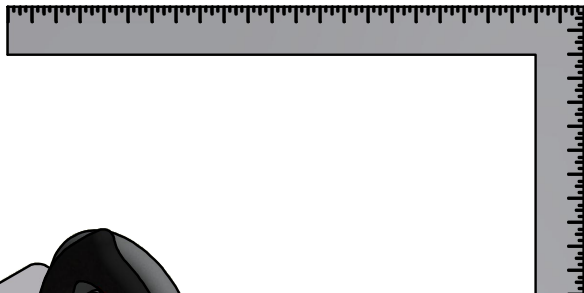
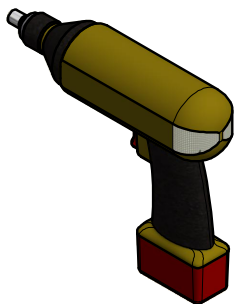
BILL OF MATERIAL

ITEM	QTY	PART NUMBER	DESCRIPTION
1	4	SEF980R.S	Rubber Utility Box Side
2	1	SEF980R.F1	Frame for Wrapped/Track Cover
3	1	SEF980R.WCA	Factory Wrapped Cover
4	20	-	2.5" Long Mulitpurpose Screws



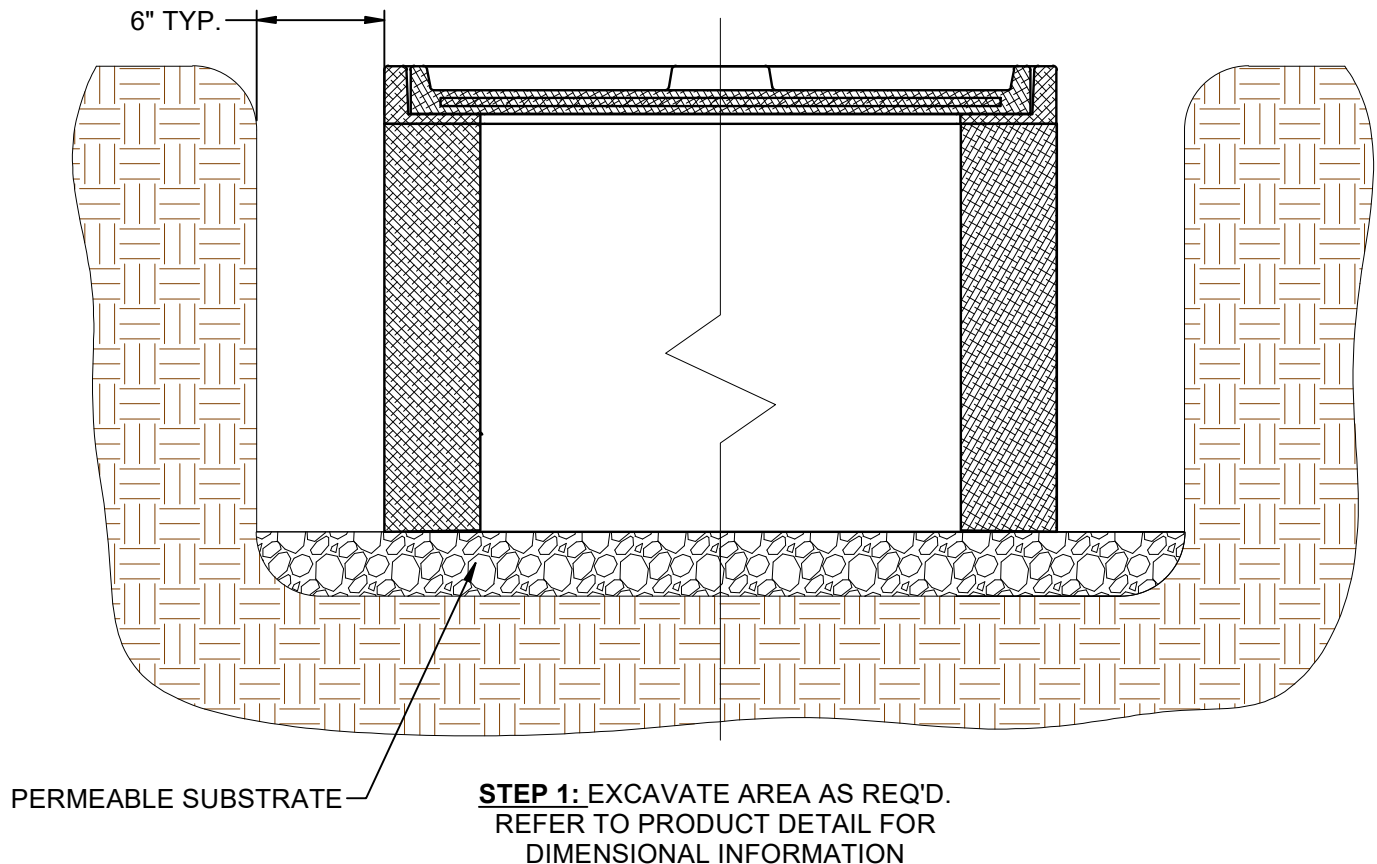
2.1 - INSTALLATION

USEFUL OR REQ'D TOOLS

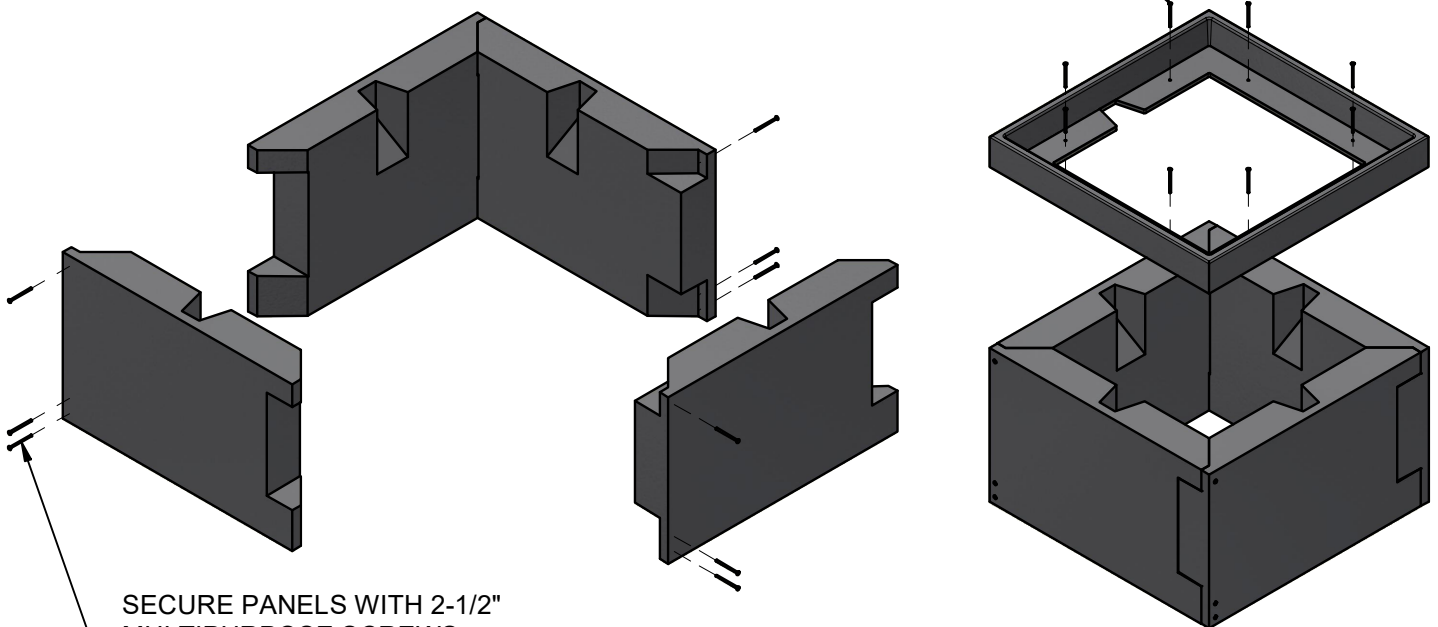


2.2 - INSTALLATION

SITE PREP & ASSEMBLY

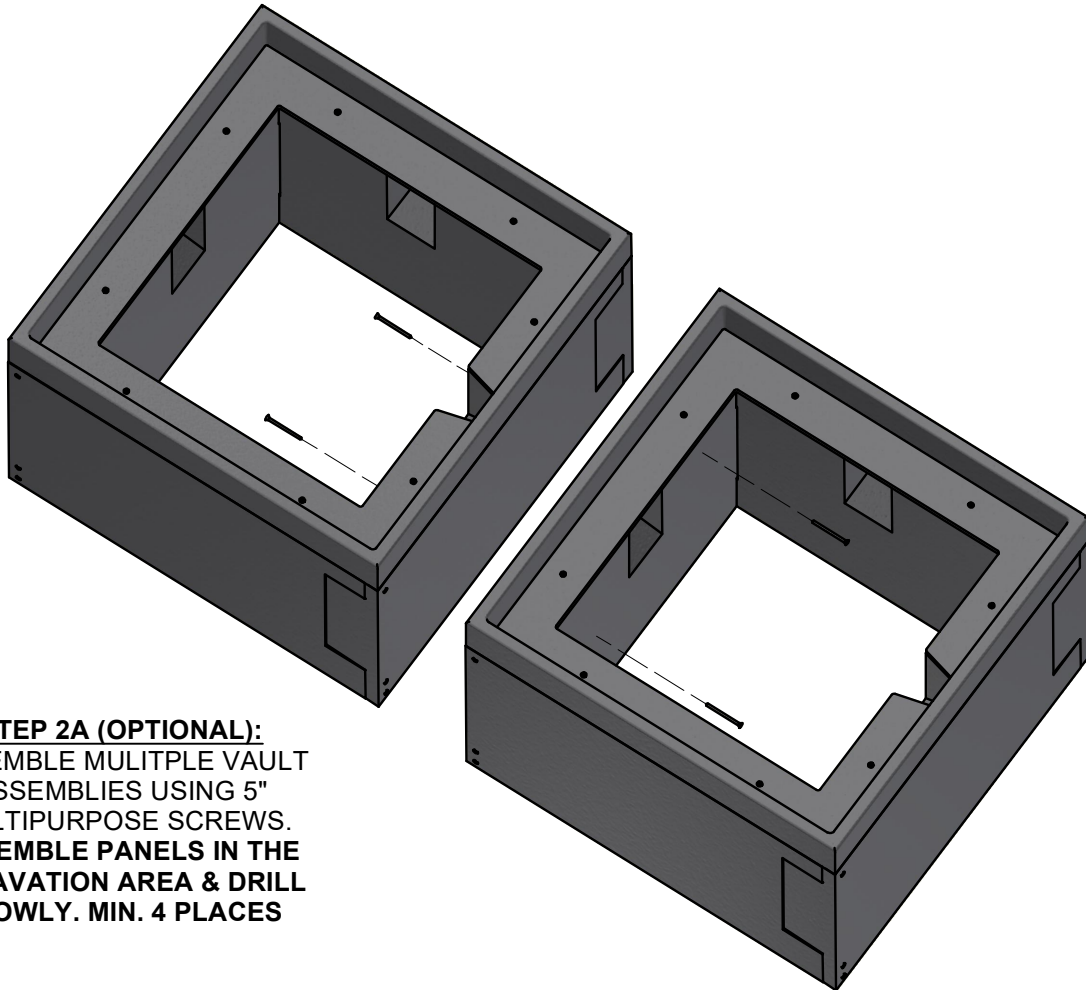


SECURE FRAME WITH 2-1/2" MULTIPURPOSE
SCREWS 2 PER SIDE AS SHOWN. **DRILL SLOWLY
TO PREVENT MELTING THE RUBBER PANEL**

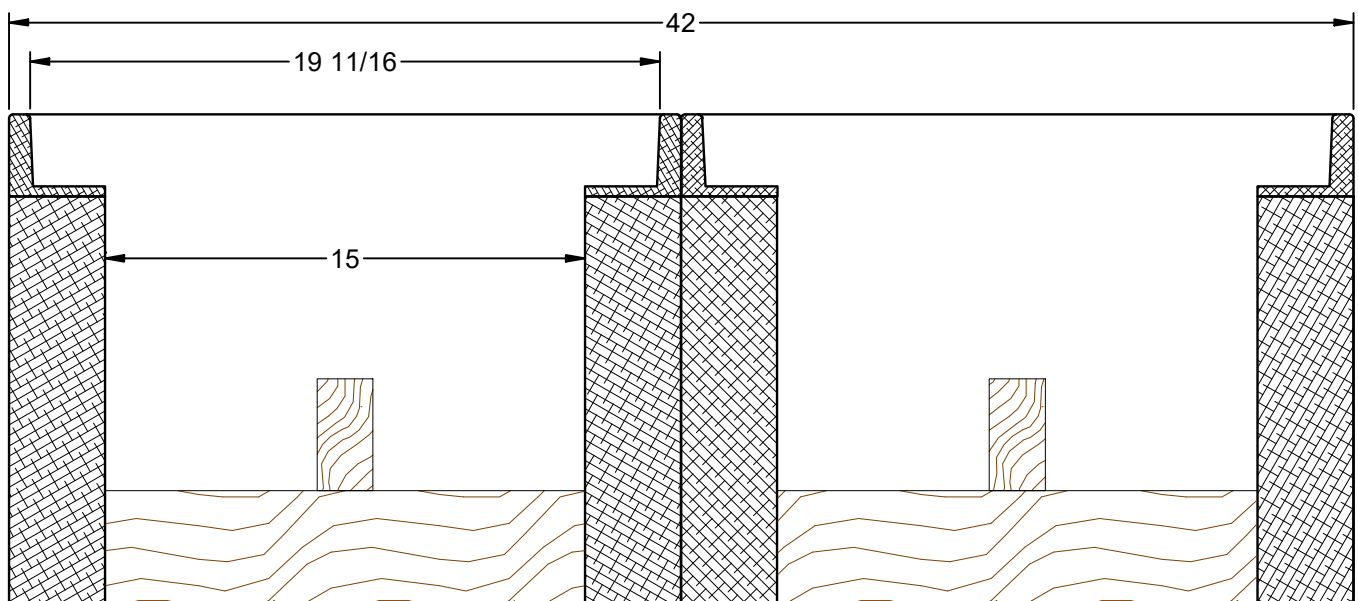


2.3 - INSTALLATION

PANEL ASSEMBLY



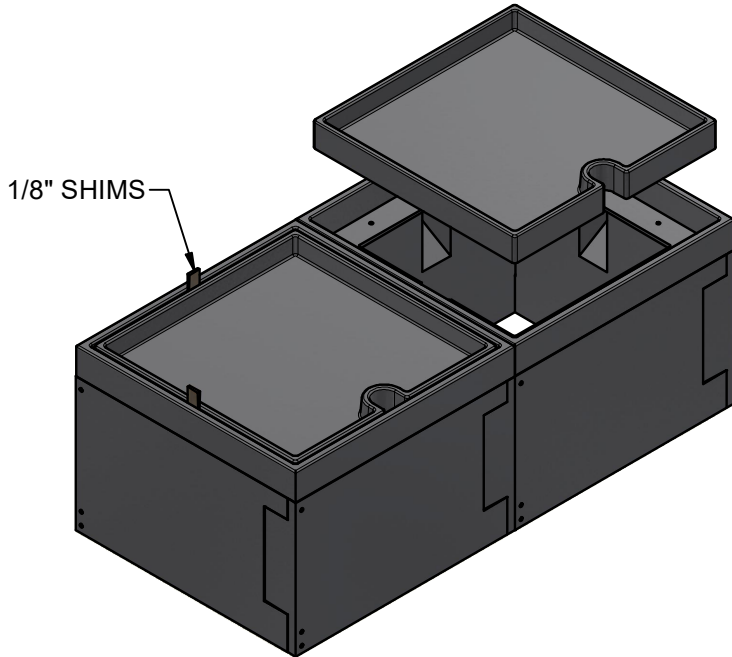
STEP 2A (OPTIONAL):
ASSEMBLE MULTIPLE VAULT
ASSEMBLIES USING 5"
MULTIPURPOSE SCREWS.
ASSEMBLE PANELS IN THE
EXCAVATION AREA & DRILL
SLOWLY. MIN. 4 PLACES



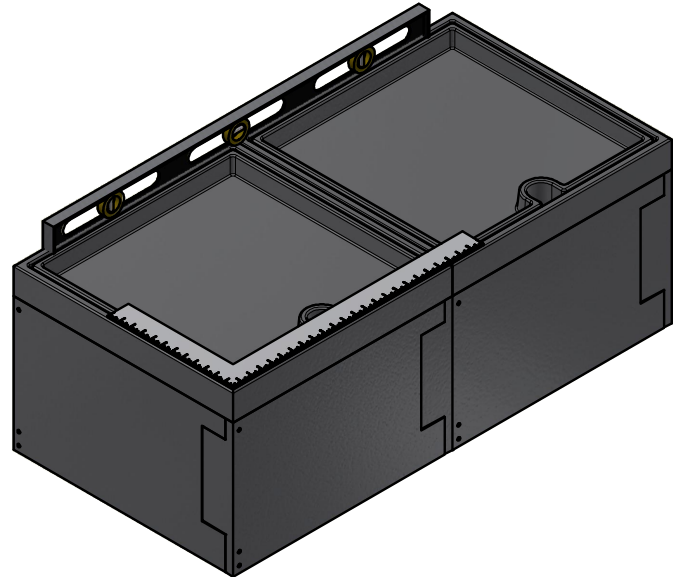
STEP 3: BRACE PANELS WITH 15" LONG 2X4 BOARDS IN BOTH DIRECTIONS AS SHOWN,
TO MAINTAIN PROPER COVER OPENING DIMENSION

2.4 - INSTALLATION

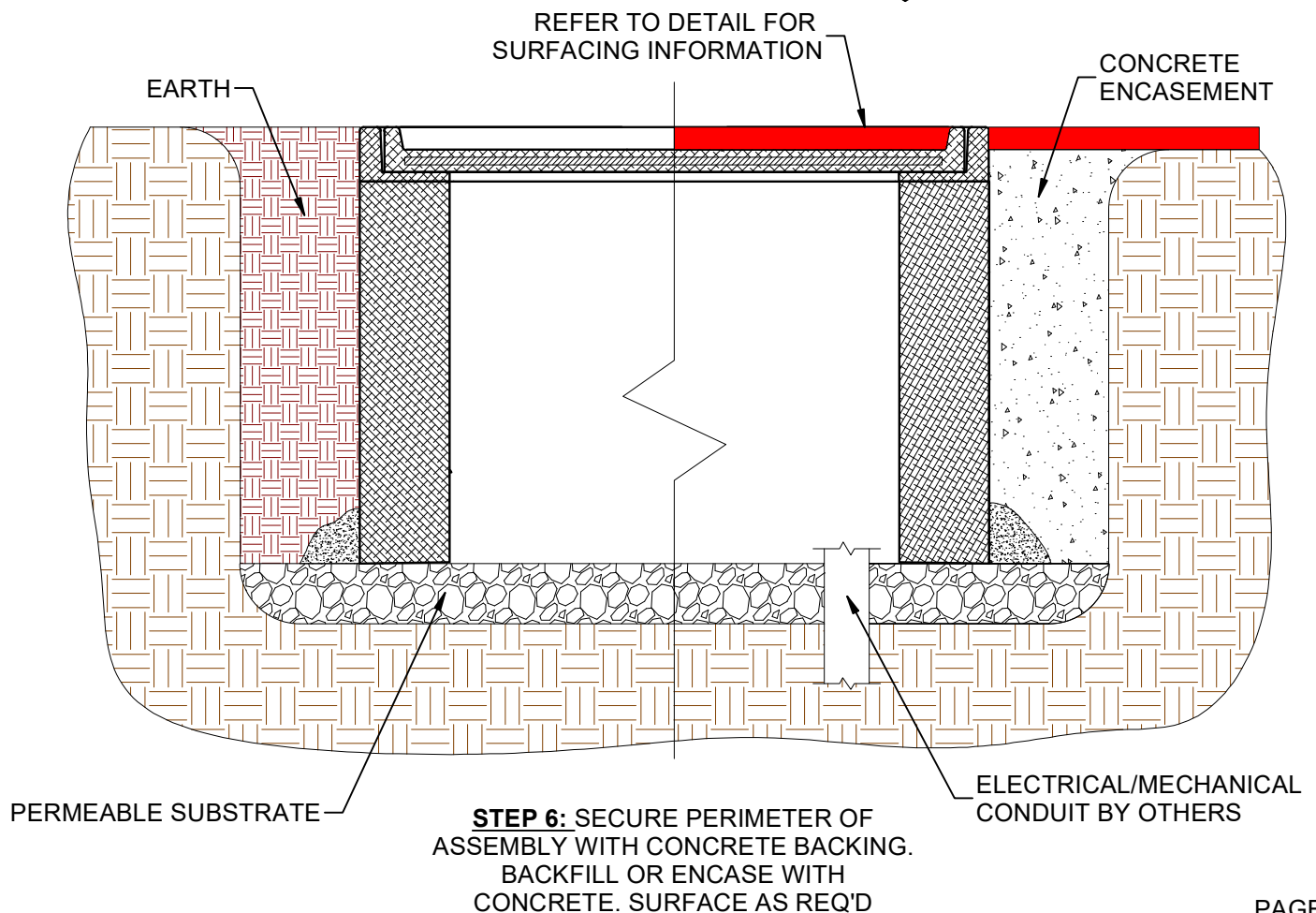
FINAL ALIGNMENT / INSTALLATION



STEP 4: INSTALL COVERS.
SHIM COVER WITH 1/8"
SPACERS AS SHOWN



STEP 5: ENSURE UTILITY BOX
ASSEMBLY IS SQUARE AND LEVEL



3.0 - MAINTENANCE / REPLACEMENT PARTS

UTILITY VAULT BOX OPERATION:

1. When in use, wires should be pulled through slots in lifting hole locations and lids should be put back in place.
2. Ensure that the covers are properly in place at all times. Do not pull wires out from under the cover causing the cover to be askew.

UTILITY VAULT BOX MAINTENANCE:

1. Inspect quarterly for any safety related issues.
2. Keep utility box free of any dirt or debris.

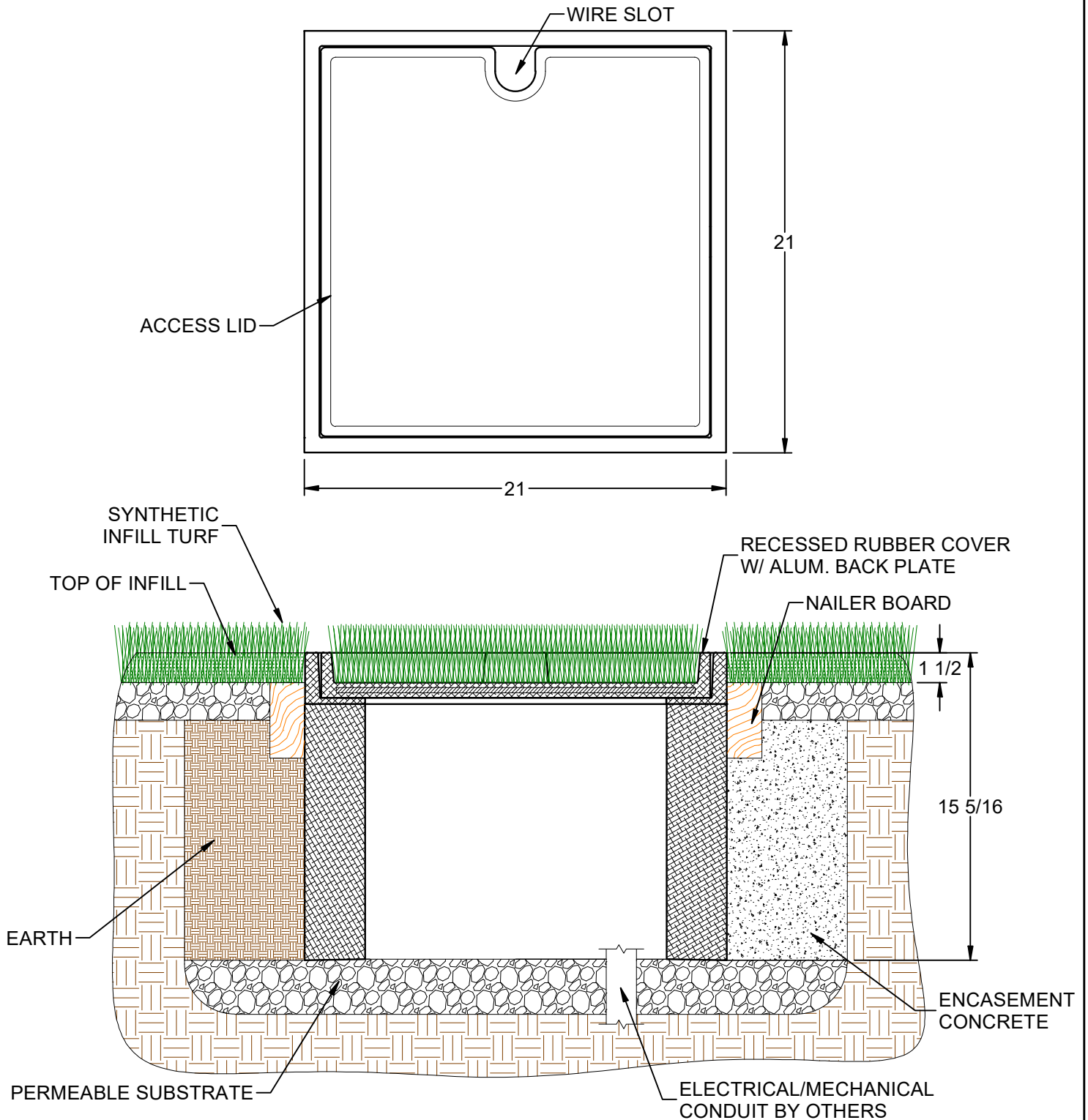
REPLACEMENT PARTS:

Replacement lids can be obtained by contacting SportsEdge® at (800) 334-6057.

DISCLAIMER: The customer and the customer's architects, engineers, consultants and other professionals are completely responsible for the selection, installation, and maintenance of any product purchased from ABT, and EXCEPT AS EXPRESSLY PROVIDED IN ABT'S STANDARD WARRANTIES, ABT MAKES NO WARRANTY, EXPRESS OR IMPLIED, AS TO THE SUITABILITY, DESIGN, MERCHANTABILITY, OR FITNESS OF THE PRODUCT FOR CUSTOMER'S APPLICATION. Copies of ABT's standard warranties are available upon request.

APPENDIX

FLEXCONNECT PRODUCT DETAILS



SportsEdge
 A Division of ABT, Inc.
 P.O. Box 837 / 259 Murdock Road
 Troutman, NC 28166
 (800) 334-6057

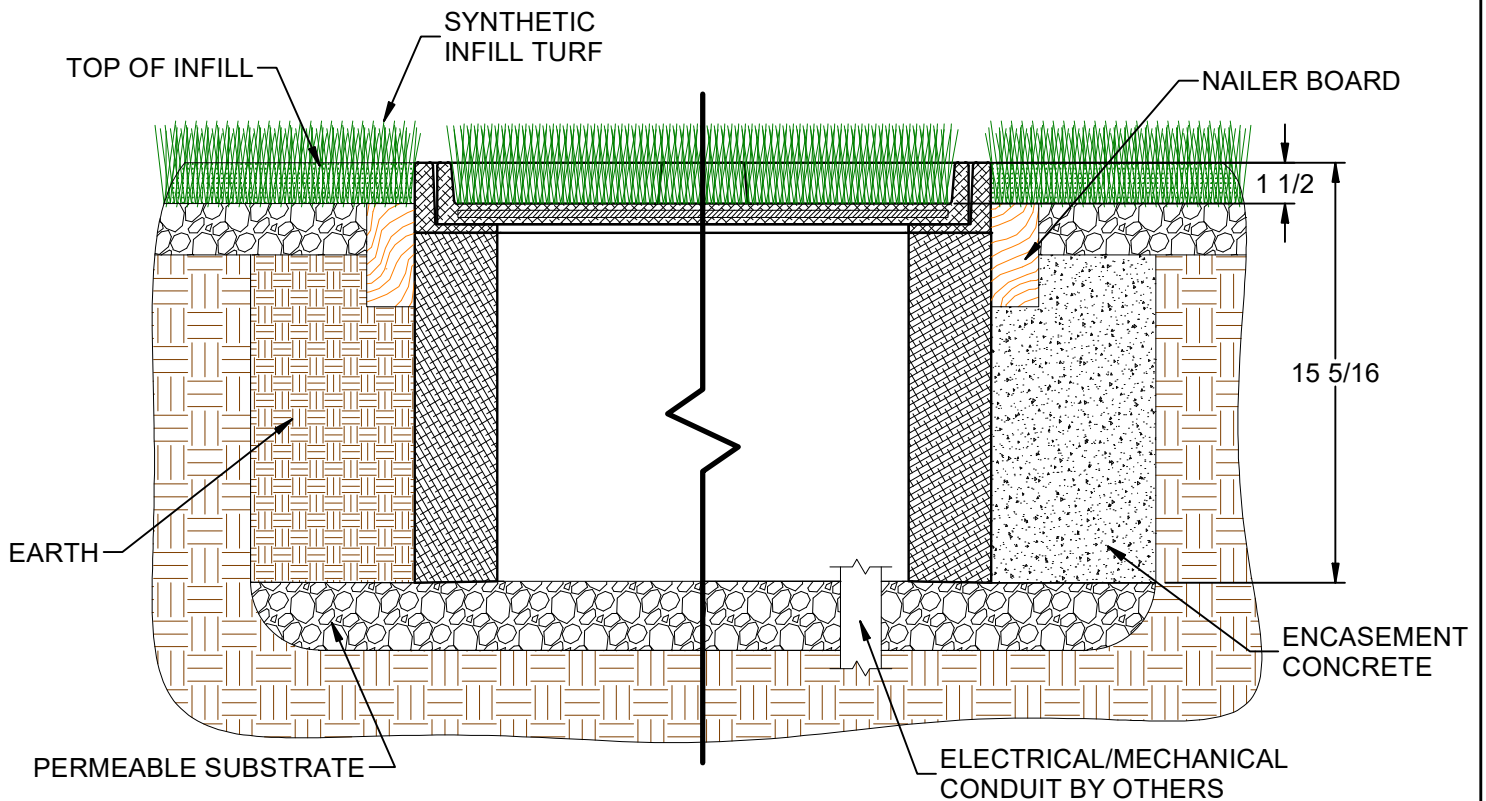
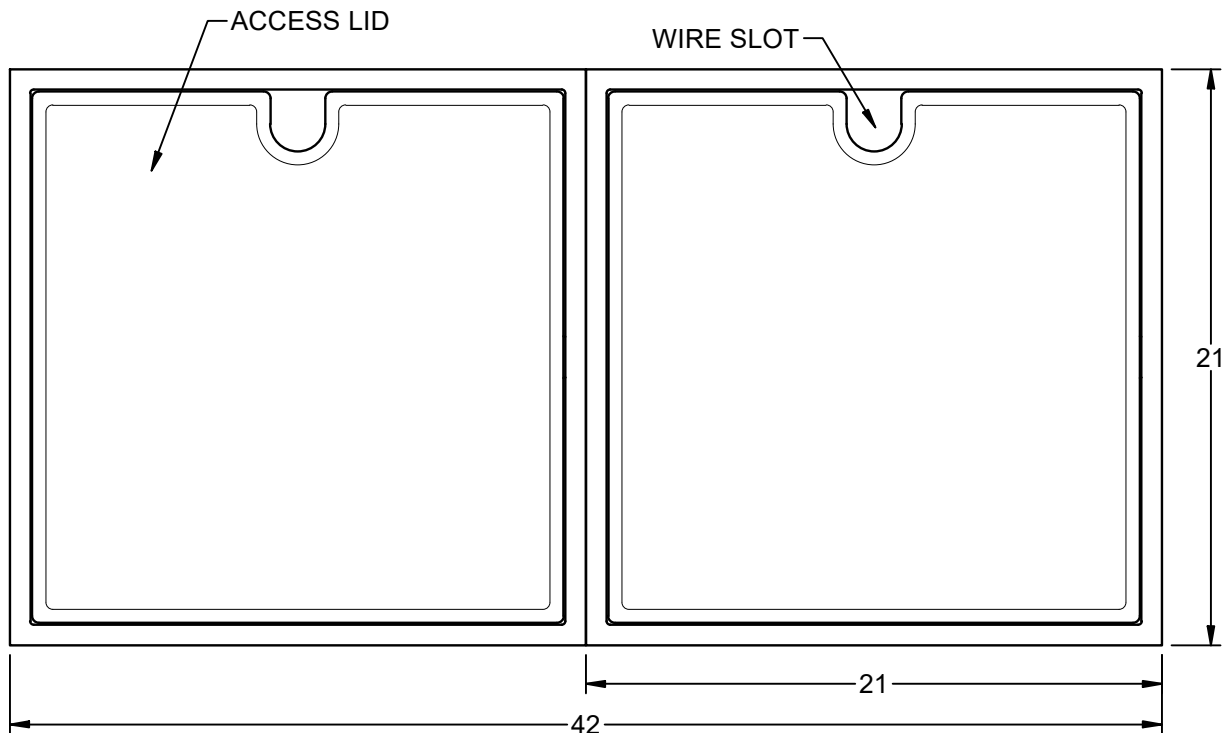
FABRICATION DRAWING © 2021 ABT, Inc.
INFILL TURF 21" L X 21" W X 15 - 5/16" H
FLEXCONNECT UTILITY VAULT

PART: **SEF981**

REV: 00
 6/3/2022

Proprietary rights of ABT, Inc. are included in the information disclosed herein. The recipient, by accepting this document, agrees that neither this document nor the information disclosed herein nor any part thereof shall be copied, reproduced or transferred to others for manufacturing or for any other purpose except as specifically authorized in writing by ABT, Inc.

DISCLAIMER: The customer and the customer's architects, engineers, consultants and other professionals are completely responsible for the selection, installation, and maintenance of any product purchased from ABT, and EXCEPT AS EXPRESSLY PROVIDED IN ABT'S STANDARD WARRANTIES, ABT MAKES NO WARRANTY, EXPRESS OR IMPLIED, AS TO THE SUITABILITY, DESIGN, MERCHANTABILITY, OR FITNESS OF THE PRODUCT FOR THE CUSTOMER'S APPLICATION. Copies of ABT's standard warranties are available upon request.



SportsEdge
 A Division of ABT, Inc.
 P.O. Box 837 / 259 Murdock Road
 Troutman, NC 28166
 (800) 334-6057

FABRICATION DRAWING © 2021 ABT, Inc.

**INFILL TURF 42" L X 21" W X 15 - 5/16" H
 FLEXCONNECT DOUBLE UTILITY VAULT**

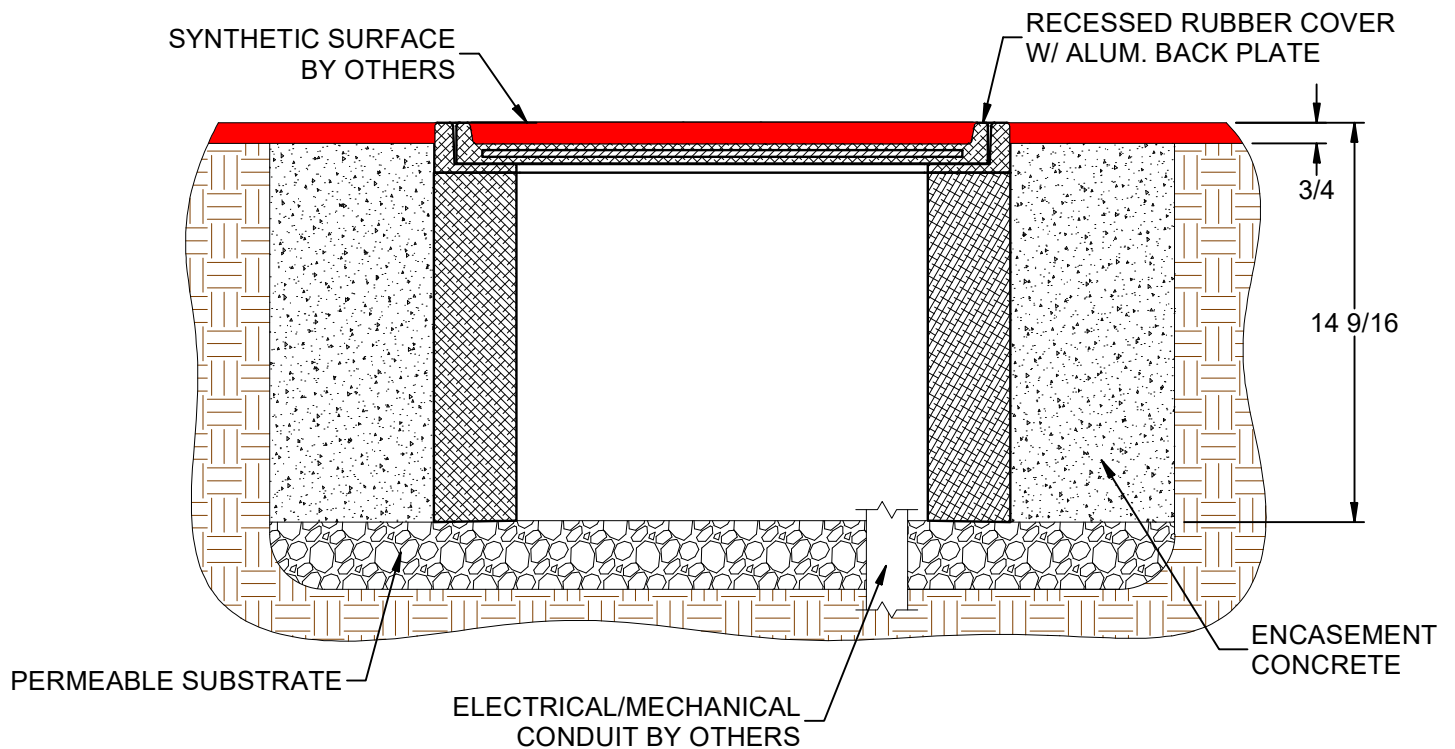
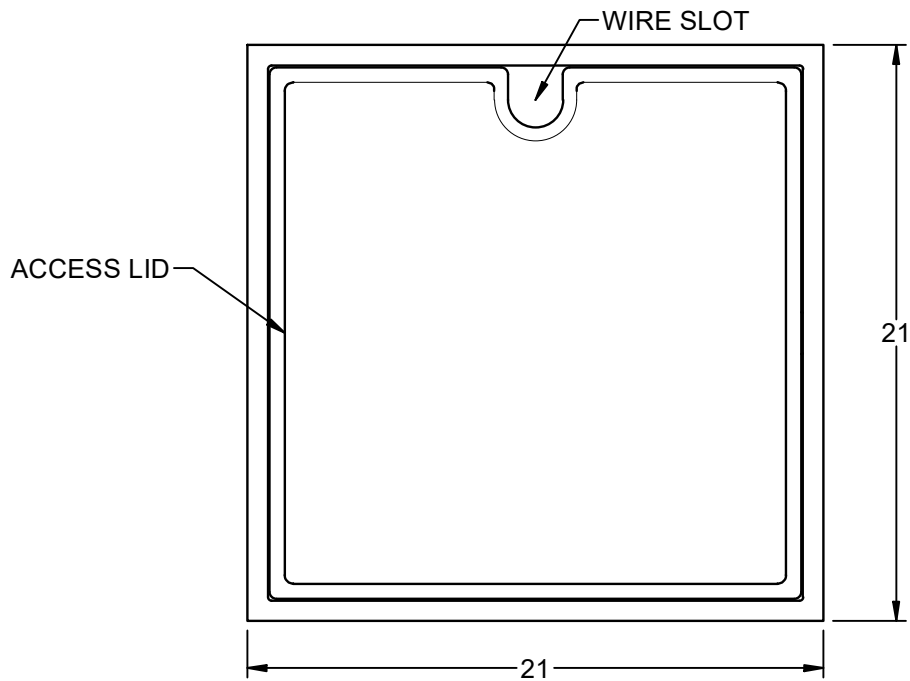
PART:

SEF981D

REV: 00
 6/3/2022

Proprietary rights of ABT, Inc. are included in the information disclosed herein. The recipient, by accepting this document, agrees that neither this document nor the information disclosed herein nor any part thereof shall be copied, reproduced or transferred to others for manufacturing or for any other purpose except as specifically authorized in writing by ABT, Inc.

DISCLAIMER: The customer and the customer's architects, engineers, consultants and other professionals are completely responsible for the selection, installation, and maintenance of any product purchased from ABT, and EXCEPT AS EXPRESSLY PROVIDED IN ABT'S STANDARD WARRANTIES, ABT MAKES NO WARRANTY, EXPRESS OR IMPLIED, AS TO THE SUITABILITY, DESIGN, MERCHANTABILITY, OR FITNESS OF THE PRODUCT FOR THE CUSTOMER'S APPLICATION. Copies of ABT's standard warranties are available upon request.

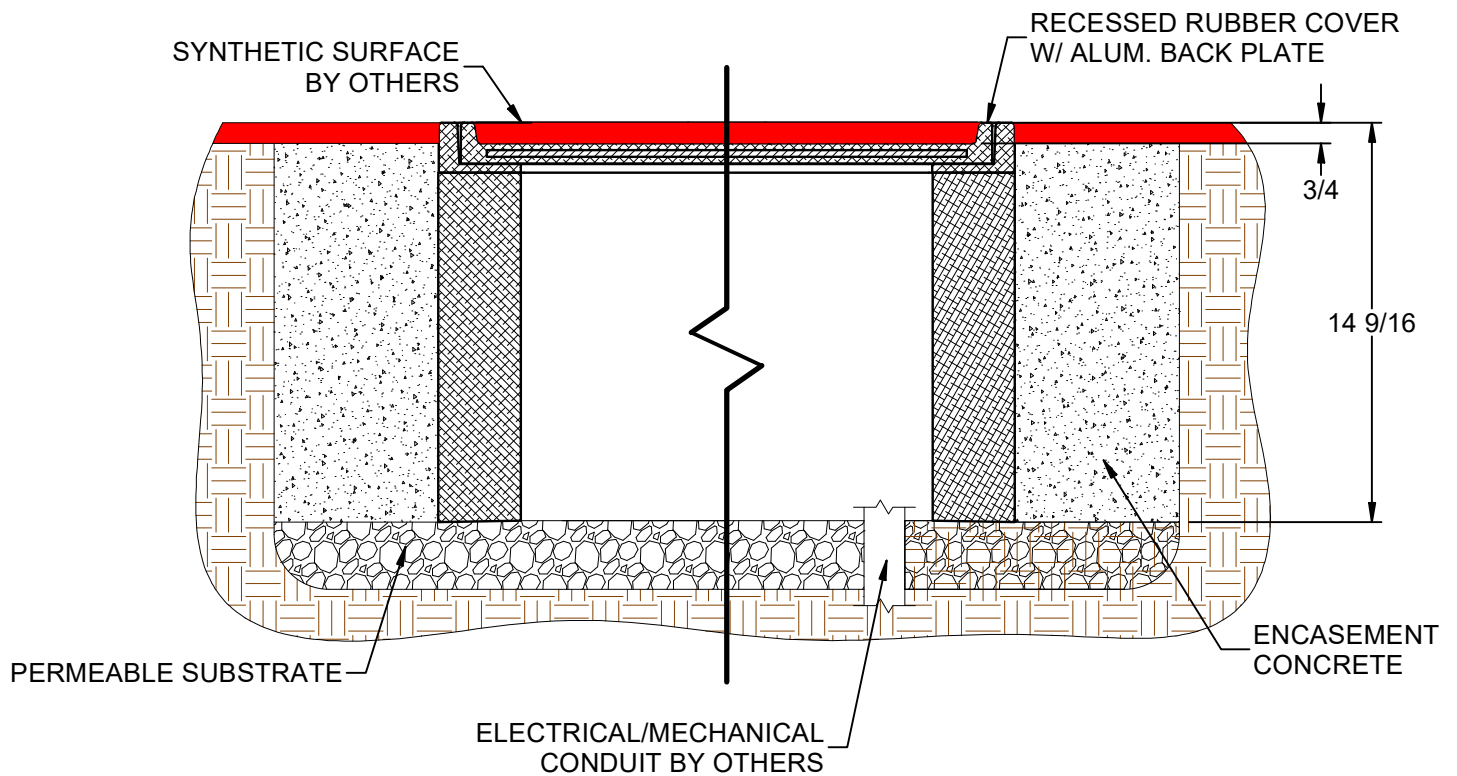
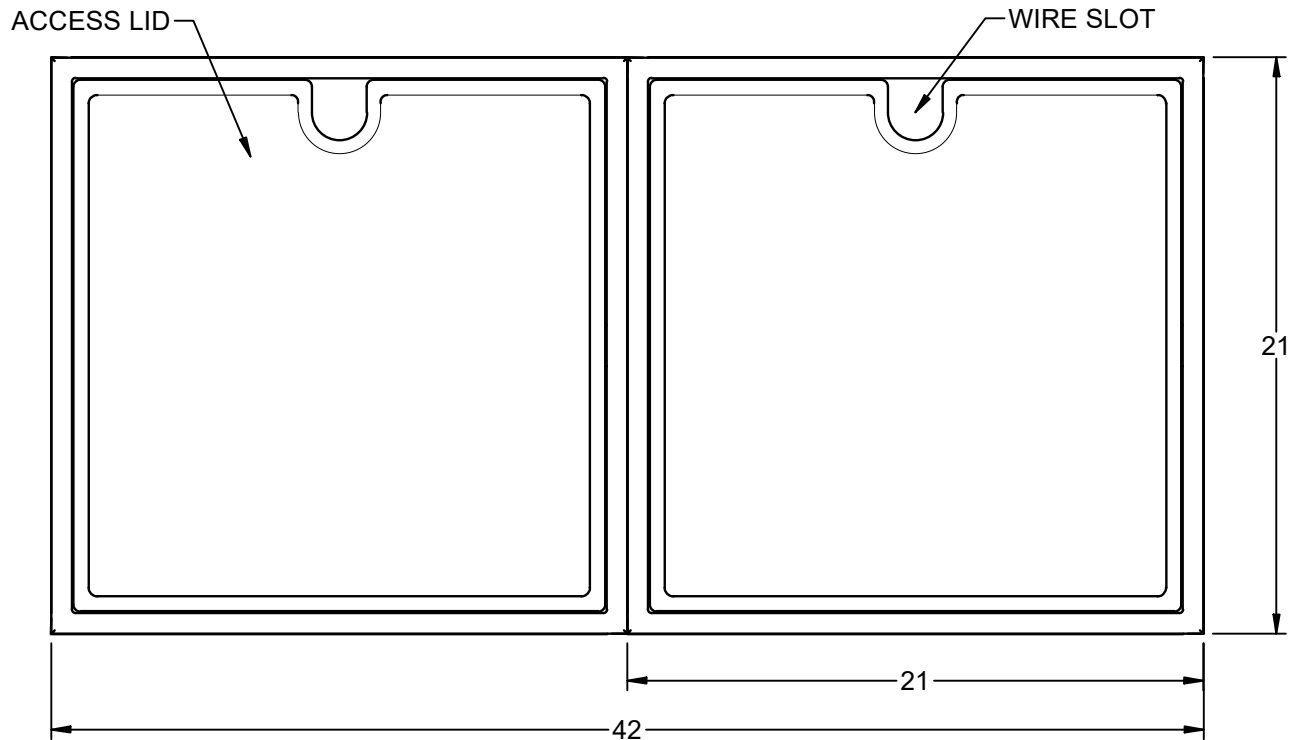


SportsEdge
 A Division of ABT, Inc.
 P.O. Box 837 / 259 Murdock Road
 Troutman, NC 28166
 (800) 334-6057

FABRICATION DRAWING © 2021 ABT, Inc.
TRACK SURFACED 21" L X 21" W X 14 - 9/16" H
FLEXCONNECT UTILITY VAULT
 PART: **SEF982** REV: 00
 6/3/2022

Proprietary rights of ABT, Inc. are included in the information disclosed herein. The recipient, by accepting this document, agrees that neither this document nor the information disclosed herein nor any part thereof shall be copied, reproduced or transferred to others for manufacturing or for any other purpose except as specifically authorized in writing by ABT, Inc.

DISCLAIMER: The customer and the customer's architects, engineers, consultants and other professionals are completely responsible for the selection, installation, and maintenance of any product purchased from ABT, and EXCEPT AS EXPRESSLY PROVIDED IN ABT'S STANDARD WARRANTIES, ABT MAKES NO WARRANTY, EXPRESS OR IMPLIED, AS TO THE SUITABILITY, DESIGN, MERCHANTABILITY, OR FITNESS OF THE PRODUCT FOR THE CUSTOMER'S APPLICATION. Copies of ABT's standard warranties are available upon request.



SportsEdge
 A Division of ABT, Inc.
 P.O. Box 837 / 259 Murdock Road
 Troutman, NC 28166
 (800) 334-6057

FABRICATION DRAWING © 2021 ABT, Inc.

TRACK SURFACED 42" L X 21" W X 14 - 9/16" H FLEXCONNECT DOUBLE UTILITY VAULT

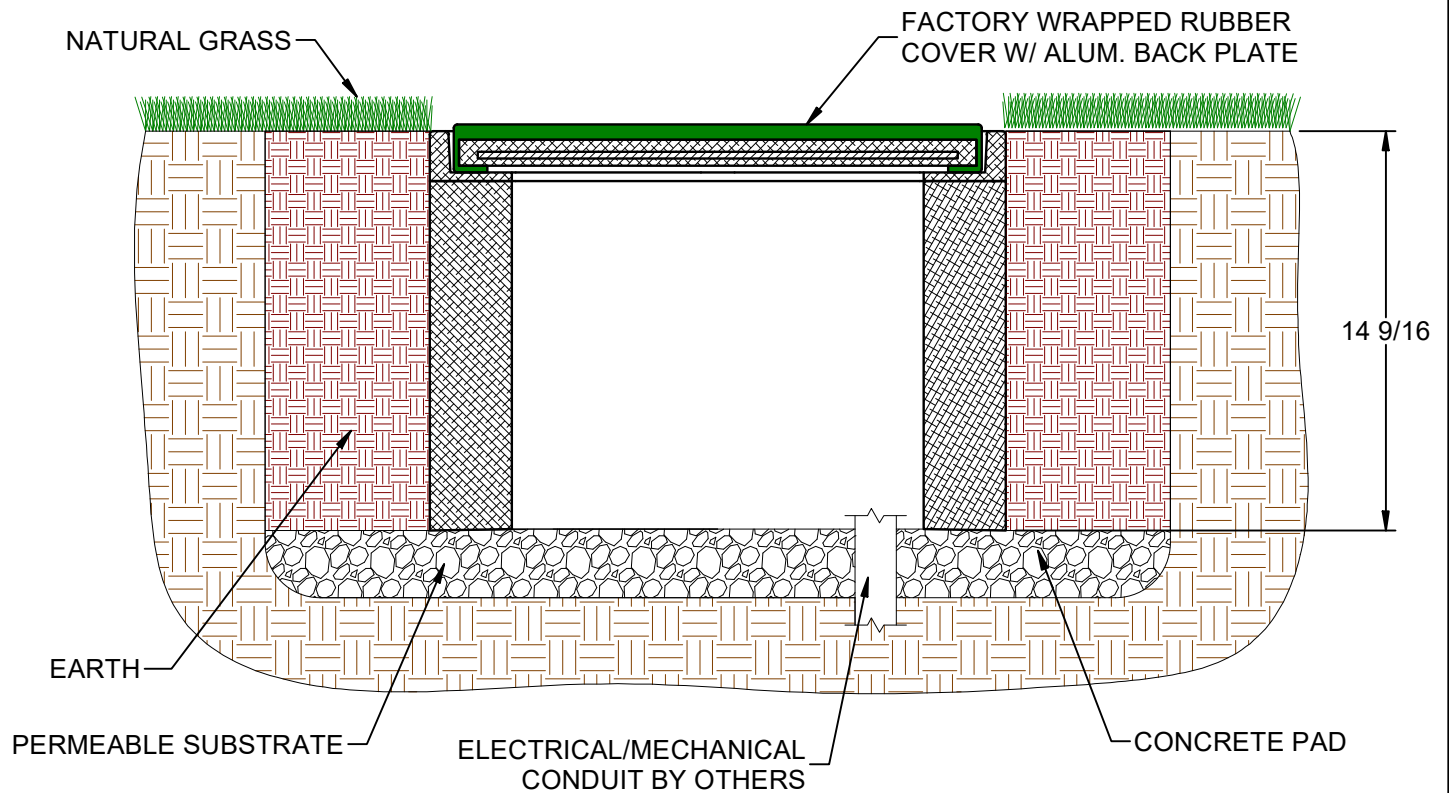
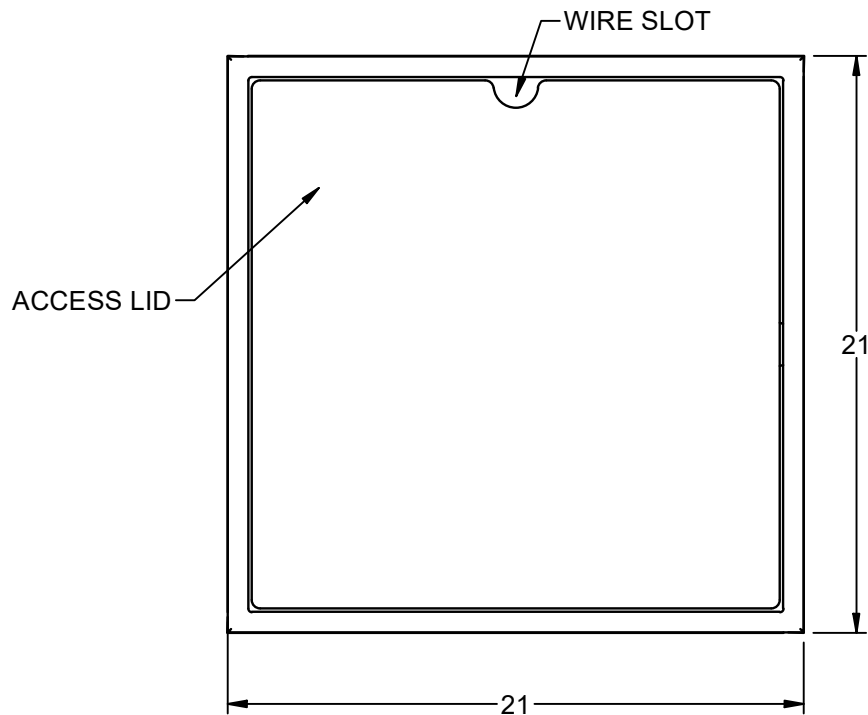
PART:

SEF982D

REV: 00
 6/3/2022

Proprietary rights of ABT, Inc. are included in the information disclosed herein. The recipient, by accepting this document, agrees that neither this document nor the information disclosed herein nor any part thereof shall be copied, reproduced or transferred to others for manufacturing or for any other purpose except as specifically authorized in writing by ABT, Inc.

DISCLAIMER: The customer and the customer's architects, engineers, consultants and other professionals are completely responsible for the selection, installation, and maintenance of any product purchased from ABT, and EXCEPT AS EXPRESSLY PROVIDED IN ABT'S STANDARD WARRANTIES, ABT MAKES NO WARRANTY, EXPRESS OR IMPLIED, AS TO THE SUITABILITY, DESIGN, MERCHANTABILITY, OR FITNESS OF THE PRODUCT FOR THE CUSTOMER'S APPLICATION. Copies of ABT's standard warranties are available upon request.




SportsEdge
 A Division of ABT, Inc.
 P.O. Box 837 / 259 Murdock Road
 Troutman, NC 28166
 (800) 334-6057

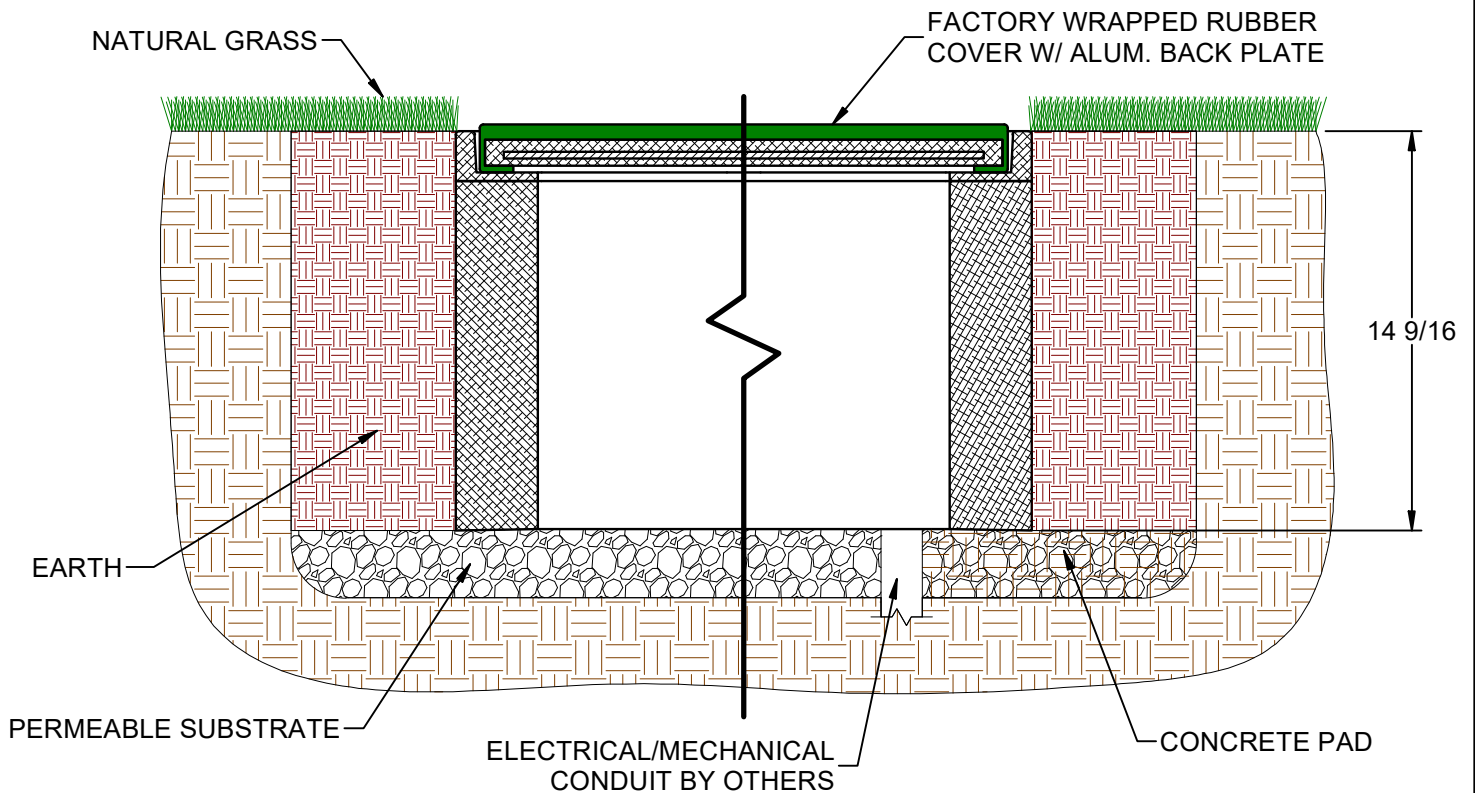
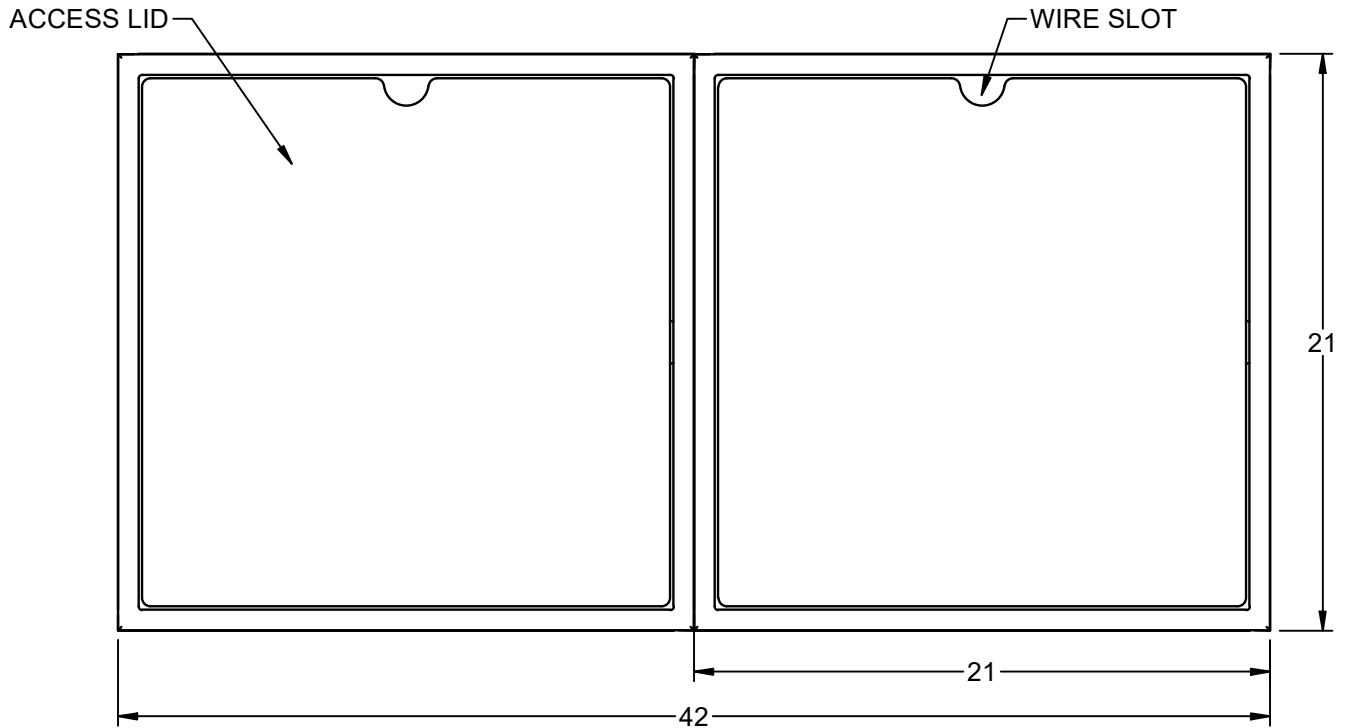
FABRICATION DRAWING © 2021 ABT, Inc.
FACTORY WRAPPED 21" L X 21" W X 14 - 9/16" H
FLEXCONNECT UTILITY VAULT

PART: **SEF983**

REV: 00
 6/3/2022

Proprietary rights of ABT, Inc. are included in the information disclosed herein. The recipient, by accepting this document, agrees that neither this document nor the information disclosed herein nor any part thereof shall be copied, reproduced or transferred to others for manufacturing or for any other purpose except as specifically authorized in writing by ABT, Inc.

DISCLAIMER: The customer and the customer's architects, engineers, consultants and other professionals are completely responsible for the selection, installation, and maintenance of any product purchased from ABT, and EXCEPT AS EXPRESSLY PROVIDED IN ABT'S STANDARD WARRANTIES, ABT MAKES NO WARRANTY, EXPRESS OR IMPLIED, AS TO THE SUITABILITY, DESIGN, MERCHANTABILITY, OR FITNESS OF THE PRODUCT FOR THE CUSTOMER'S APPLICATION. Copies of ABT's standard warranties are available upon request.



SportsEdge
 A Division of ABT, Inc.
 P.O. Box 837 / 259 Murdock Road
 Troutman, NC 28166
 (800) 334-6057

FABRICATION DRAWING © 2021 ABT, Inc.

**FACTORY WRAPPED 42" L X 21" W X 14 - 9/16" H
 FLEXCONNECT DOUBLE UTILITY VAULT**

PART:

SEF983D

REV: 00
 6/3/2022

Proprietary rights of ABT, Inc. are included in the information disclosed herein. The recipient, by accepting this document, agrees that neither this document nor the information disclosed herein nor any part thereof shall be copied, reproduced or transferred to others for manufacturing or for any other purpose except as specifically authorized in writing by ABT, Inc.

DISCLAIMER: The customer and the customer's architects, engineers, consultants and other professionals are completely responsible for the selection, installation, and maintenance of any product purchased from ABT, and EXCEPT AS EXPRESSLY PROVIDED IN ABT'S STANDARD WARRANTIES, ABT MAKES NO WARRANTY, EXPRESS OR IMPLIED, AS TO THE SUITABILITY, DESIGN, MERCHANTABILITY, OR FITNESS OF THE PRODUCT FOR THE CUSTOMER'S APPLICATION. Copies of ABT's standard warranties are available upon request.