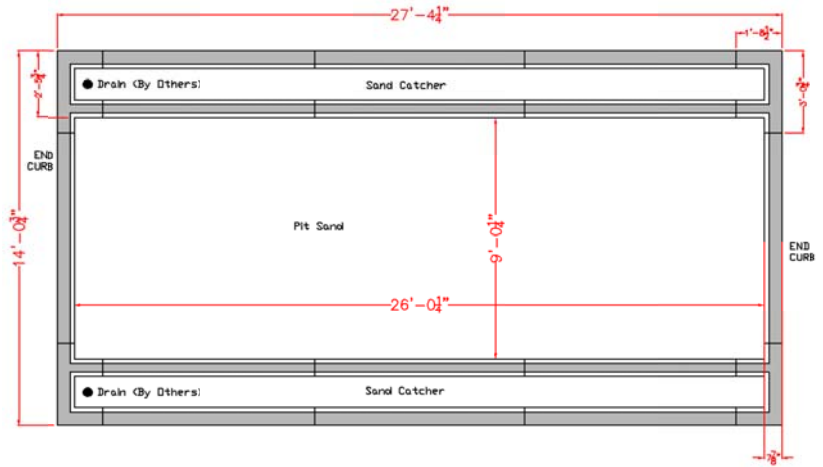


## FlexEdge™

### Long Jump Pit w/ Sand Catchers

#### INSTALLATION INSTRUCTIONS



*NOTE: ALWAYS BE AWARE OF THE FINISHED CURB HEIGHT REQUIREMENTS*

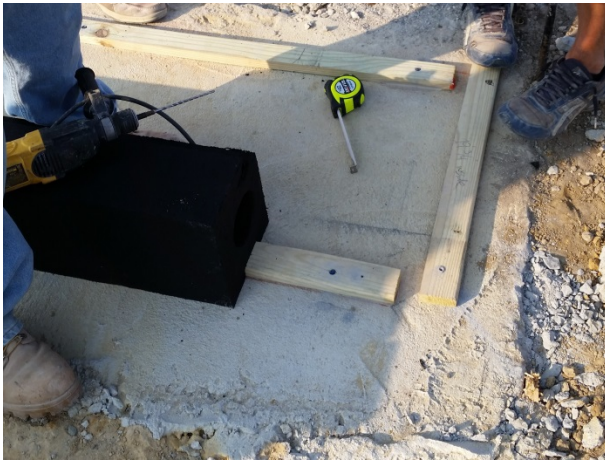
**Recommended Installation:** Please read entire Installation Notes before beginning installation

1. Refer to drawings for overall layout and pit dimensions.
2. Sight and stake out the outside perimeter of the long jump pit layout. Grade the long jump pit curb location approximately 32" wide for the side sand catchers, and 10" wide for the end curbs at the top and bottom of the pit. Form and pour a 2"-3" minimum concrete mud slab as the base for rubber curbs and bottom for the sand catchers. **IMPORTANT:** Level the concrete slab to the correct height accounting for the overall height of the rubber curbs that will be installed on top. A properly installed base will ensure a good installation. *See Figure 1A.*

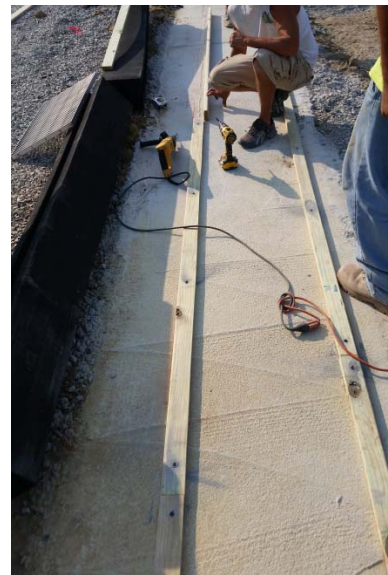


*Figure 1A*

3. Place a rubber curb on top of concrete base; check the outer ledge (taller) of the rubber curb to be sure it is at the desired finished height requirement.
4. Installation of furring strips for added stability during construction: On the concrete base, measure and mark the location for the furring strips that will fit inside the notch on the bottom of the rubber curbs. The furring strips should fit comfortably inside the notch. Mechanically fasten furring strips to the concrete base.

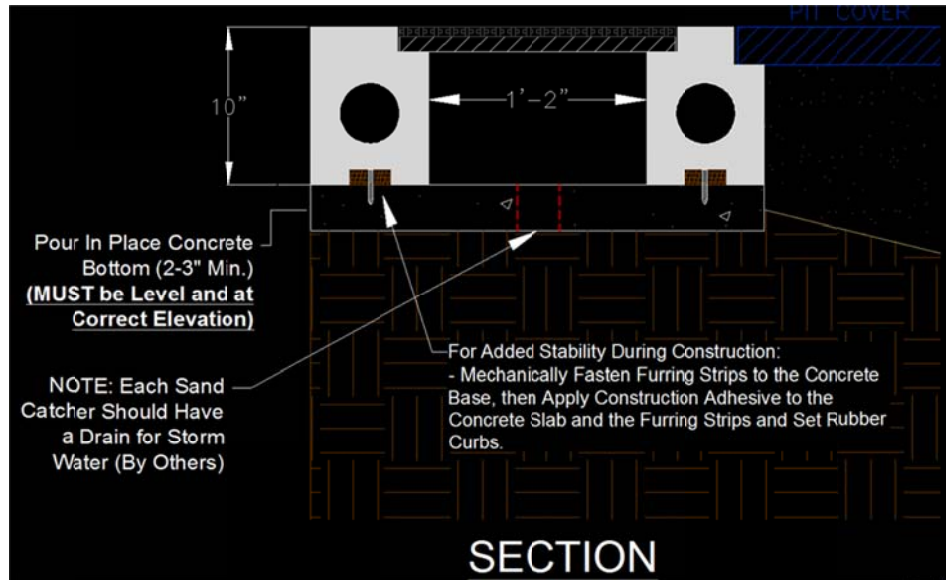


Always follow the sight string line carefully, so the side of the curb is straight, not



5. Start by placing the pre-manufactured rubber 90° corner curb at one corner of the pit to get the 90 degree angle set. Work out from this point. Apply construction adhesive to the concrete slab under the rubber curb and to the wood furring strips, then set the rubber curb.





### **BETASEAL ADHESIVE PREP**

The Betaseal adhesive is used to bond the end of each rubber curb to the next. Betaseal is thick and can be a little difficult to pump out with the caulking gun in colder weather. If available, use a tube heater that warms 6 tubes at a time. If one is not available at your site, please find some way to warm the product. The warmer it is the easier it spreads.



1. Once a curb is correctly located, apply Betaseal adhesive to the end. Place about 5 passes ¼" bead of the Betaseal adhesive on the end of the already anchored curb.



2. Have at least two people pick up the next curb and carefully place it tightly against the curb that's already in place. Smooth any Betaseal that oozes from the joints when being squeezed together. Apply an additional bead of Betaseal at the seam on the exterior, and then smooth out with a putty knife or trowel.



3. Be sure the curb is level, in-line and even with the previously installed curb. Periodically, during installation have your surveyor sight check the curb heights, to make sure that everything is staying at the required elevation.
4. With a putty knife or trowel screed off any excess adhesive that may have pushed out from the joints. Have a plastic container and rag with you to wipe away any build up on the trowel. Once the curbs have been installed or during installation, periodically go back over the joints, before the adhesive totally cures and see if any of them need additional adhesive or have an excess. You want the seam to be as unnoticeable as possible.
5. After all the curbs are properly installed and in place:
  - Using the (2 Part) Top Coat Urethane, paint all top areas of the curb that will be exposed to sunlight in the finished installation. It is not necessary to coat areas that will not be exposed to sunlight.
  - Two coats are required. The material will go much further in the second application.



*2 Part  
UV Top Coat*

**PLEASE NOTE: Be careful not to move or misalign the curbs during construction or when backfilling up to the curbs to maintain proper alignment of the rubber and for an first-rate finished installation.**



