

ASSEMBLY INSTRUCTIONS:

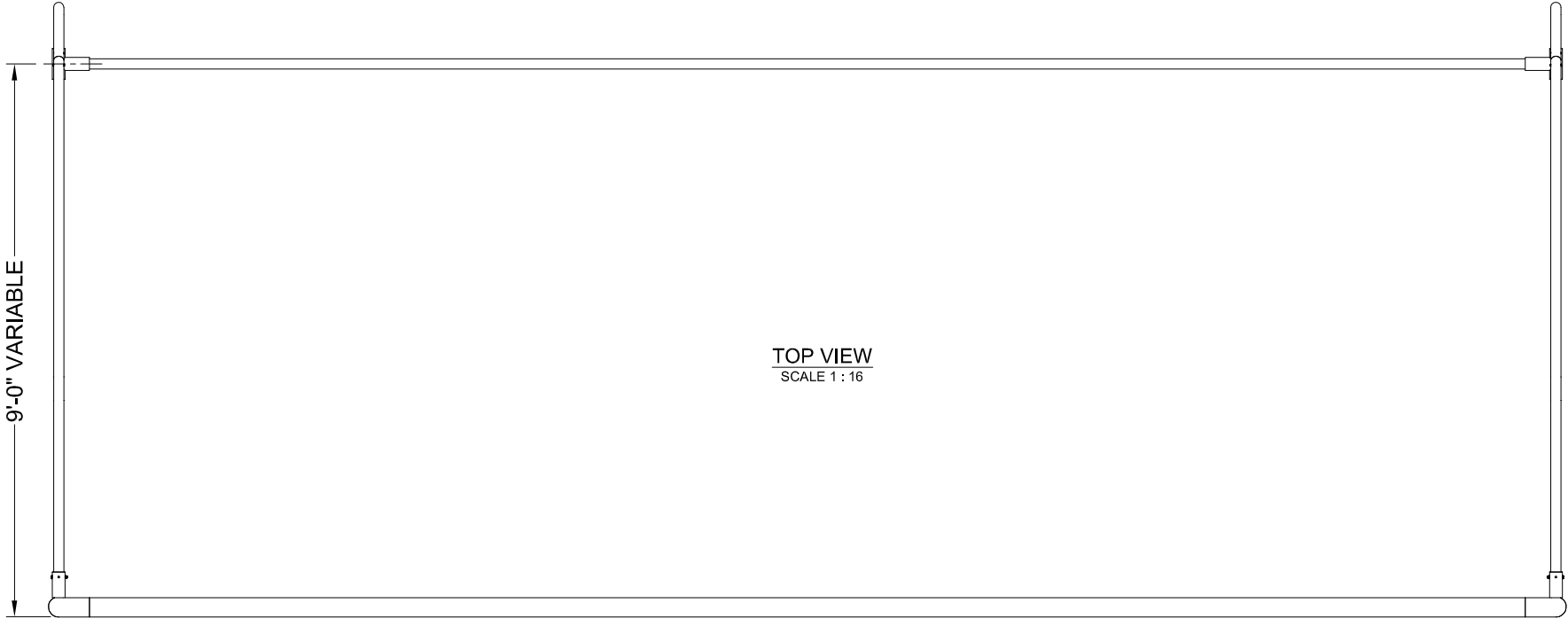
1. ASSEMBLE GOAL FRAME FACE DOWN ON THE GROUND.
2. ASSEMBLE UPPER AND LOWER BACK STAYS TOGETHER.
3. SLIDE TEE CONNECTORS ON TO LOWER TUBES. **DO NOT TIGHTEN SET SCREWS** (ORIENT SET SCREWS TO BOTTOM SIDE).
4. SLIDE ASSEMBLED BACK STAY INTO FRAME SOCKETS AND INSTALL HARDWARE AS SHOWN.
5. PLACE BACK STAY GROUND TUBE BETWEEN TEE CONNECTORS.
6. SET GOAL UPRIGHT.
7. POSITION BACK STAY GROUND TUBE AS DESIRED AND TIGHTEN SET SCREWS.
8. CHECK ALL FASTENERS HAVE BEEN INSTALLED AND TIGHTENED.

| BILL OF MATERIAL | | | | | |
|------------------|-----|--|----------------------|---------|----------|
| ITEM | QTY | DESCRIPTION | MATERIAL | UNIT WT | TOTAL WT |
| 9 | 24 | SOCKET HEAD CAP SCREW (LOCKING PATCH) 3/8"-16 UNC X 1 1/8" LONG | STAINLESS STEEL | XX LBS | XX LBS |
| 10 | 24 | FLAT WASHER 3/8" SIZE (13/32" ID X 47/64" OD X 0.090" THK) | STAINLESS STEEL | XX LBS | XX LBS |
| 11 | 8 | HEX HEAD CAP SCREW 5/16"-18 UNC X 3" LONG | STAINLESS STEEL | XX LBS | XX LBS |
| 12 | 16 | FLAT WASHER 5/16" SIZE (11/32" ID X 11/16" OD X 0.080" THK) | STAINLESS STEEL | XX LBS | XX LBS |
| 13 | 8 | NYLON INSERT LOCKING NUT 5/16"-18 UNC | STAINLESS STEEL | XX LBS | XX LBS |
| 14 | 8 | BUTTON HEAD SOCKET CAP SCREW 5/16"-18 UNC X 3/4" LONG | STAINLESS STEEL | XX LBS | XX LBS |
| 15 | 16 | HEX SOC SET SCREW - CONE POINT Ø5/16"-18 UNC X 3/4" LONG | STAINLESS 18-8 ALLOY | — LBS | — LBS |

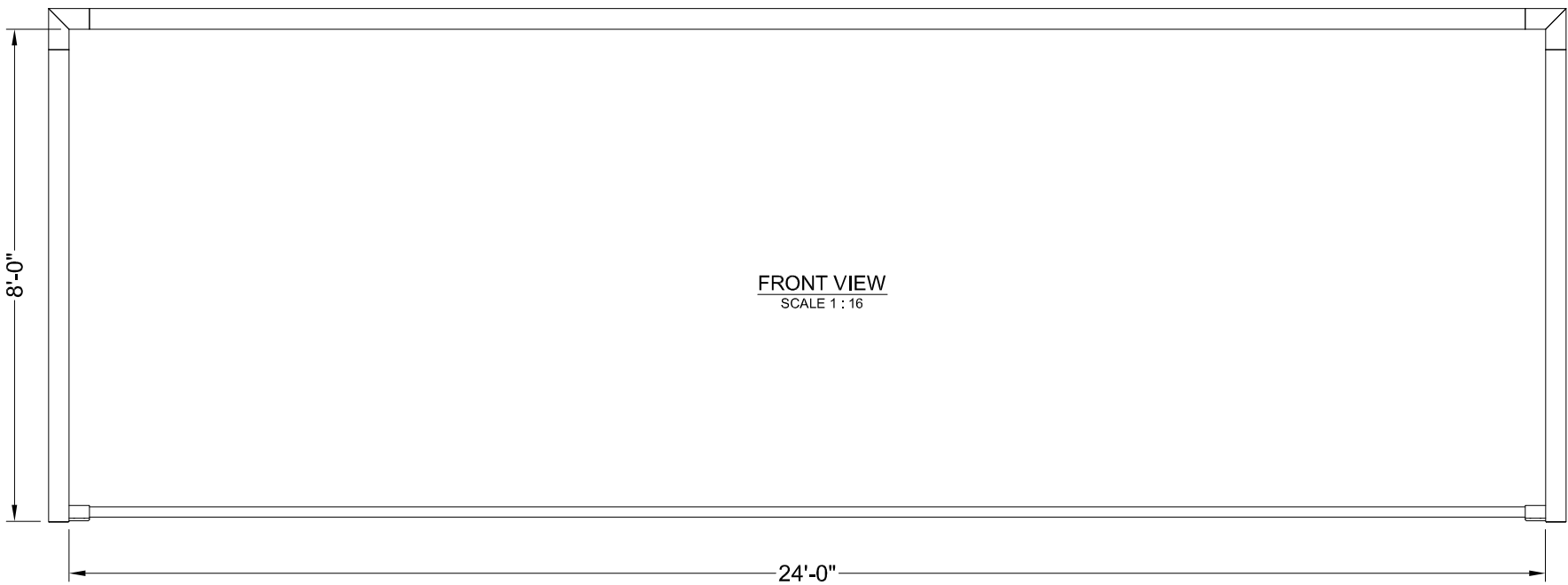
NOTE: THIS BILL OF MATERIAL IS FOR (2) GOAL ASSEMBLIES.

| BILL OF MATERIAL | | | | | |
|------------------|-----|---|------------------|-----------|-----------|
| ITEM | QTY | DESCRIPTION | MATERIAL | UNIT WT | TOTAL WT |
| 1 | 4 | UPRIGHT ASSEMBLY (ROUND) PART # SE-SG-UPR-RND | ALUMINUM 6061-T6 | 18.3 LBS | 73.2 LBS |
| 2 | 4 | CORNER ASSEMBLY (ROUND) PART # SE-SG-CRN-RND | ALUMINUM 6061-T6 | 9.6 LBS | 38.4 LBS |
| 3 | 2 | CROSSBAR TUBE (ROUND) PART # SE-SG-CBT-RND | ALUMINUM 6061-T6 | 51.6 LBS | 103.2 LBS |
| 4 | 4 | BACK STAY LOWER TUBE ASSEMBLY PART # SE-SG-BS-LT | ALUMINUM 6061-T6 | 11.7 LBS | 46.8 LBS |
| 5 | 4 | BACK STAY UPPER TUBE PART # SE-SG-BS-UT | ALUMINUM 6061-T6 | 10.0 LBS | 40.0 LBS |
| 6 | 4 | TEE CONNECTOR ASSEMBLY PART # SE-SG-BS-TC | ALUMINUM 6061-T6 | 2.3 LBS | 9.2 LBS |
| 7 | 2 | BACK STAY GROUND TUBE PART # SE-SG-BS-GT | ALUMINUM 6061-T6 | 20.8 LBS | 41.6 LBS |
| 8 | 100 | NET CLIP - PLASTIC PART # SE-SG-NET-CLP | NYLON TYPE 6/6 | 0.015 LBS | 1.5 LBS |

APPROXIMATE TOTAL WEIGHT FOR ONE ASSEMBLY 177 LBS
APPROXIMATE SHIPPING WEIGHT 354 LBS

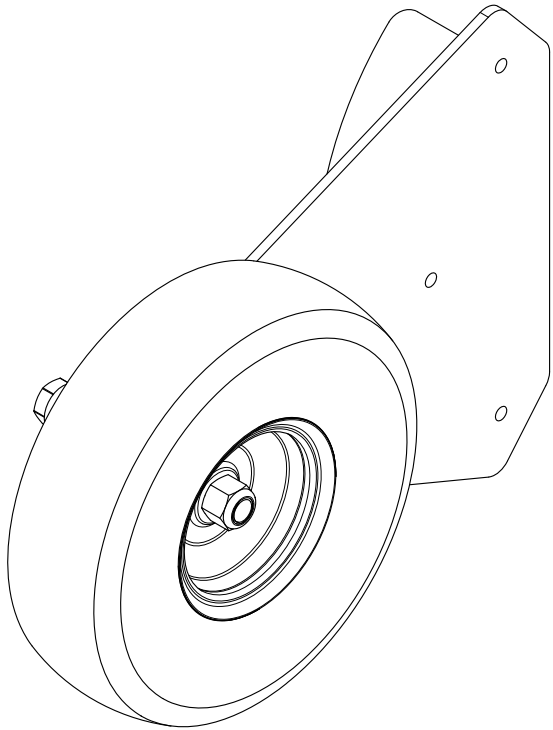


TOP VIEW
SCALE 1 : 16

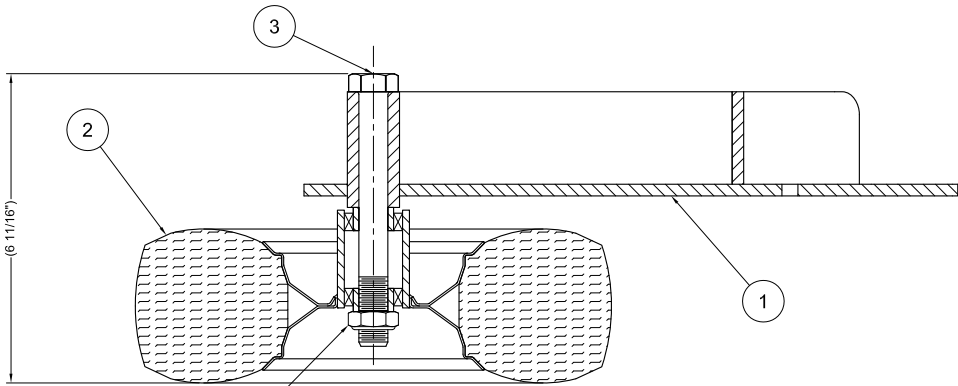
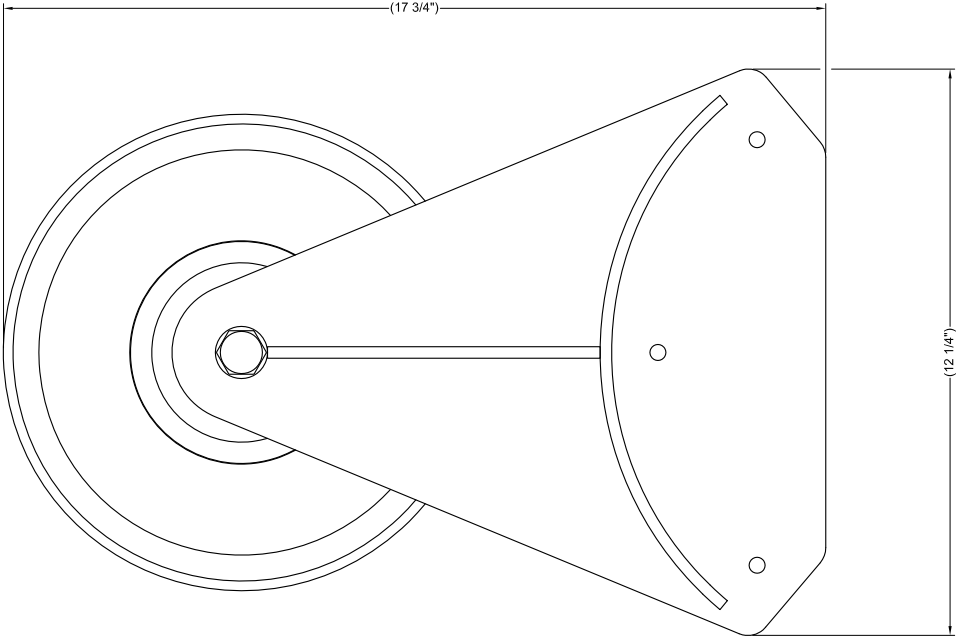


FRONT VIEW
SCALE 1 : 16

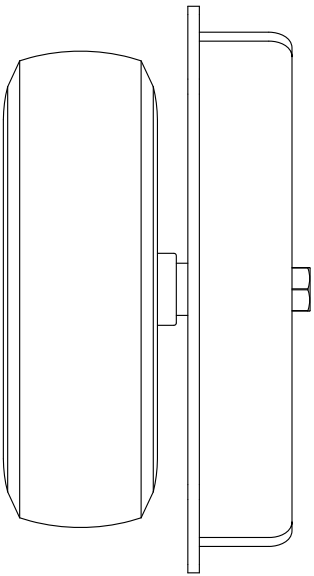
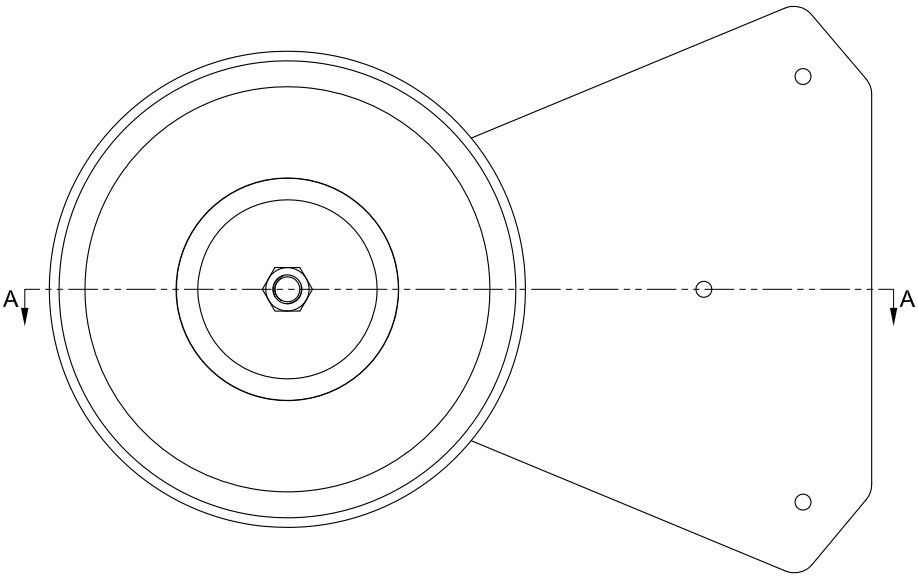
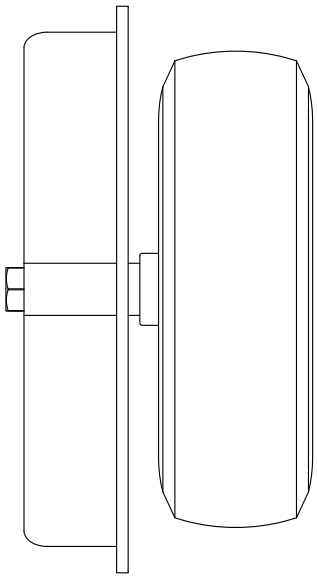
| | | | | |
|---|---|-----|------|----------|
| 04 | ADDED ITEM #15, SET SCREWS (ORIGINALLY ON TEE-ASSEMBLY) | FWS | — | 06/02/11 |
| 03 | ITEM 9 WAS BUTTON HEAD; ADDED WHEEL KIT LOCATOR HOLE; CHANGED ASSEMBLY ORDER. | FWS | — | 01/17/11 |
| 02 | CORRECTED BALLOONS & BOM FOR ITEMS 2,5 & 6 | FWS | — | 09/17/10 |
| REV | DESCRIPTION | BY | CHKD | DATE |
| <div><div><div>SportsEdge®</div><div>A Division of ABT, Inc. P.O. Box 837 • 259 Mainbrook Road Troutman, NC 28166 800-334-6057</div></div><div><div>FABRICATION DRAWING © 2009 SportsEdge</div><div>SOCCER GOAL (4" ROUND) ASSEMBLY</div><div>ALL ALUMINUM CONSTRUCTION</div></div><div><div>FILE: SE-SG-RND-04</div><div>PART: SE-SG-RND</div></div></div> <div><p>Proprietary rights of ABT, Inc. are included in the information disclosed herein. The recipient, by accepting this document, agrees that neither this document nor the information disclosed herein nor any part thereof shall be copied, reproduced or transferred to others for manufacturing or for any other purpose except as specifically authorized in writing by ABT, Inc.</p><p>DISCLAIMER: The customer and the customer's architect, engineers, consultants and other professionals are completely responsible for the selection, installation, and maintenance of any product purchased from ABT, and EXCEPT AS EXPRESSLY PROVIDED IN ABT'S STANDARD WARRANTIES, ABT MAKES NO WARRANTY, EXPRESS OR IMPLIED, AS TO THE SUITABILITY, DESIGN, MERCHANTABILITY, OR FITNESS OF THE PRODUCT FOR CUSTOMER'S APPLICATION. Copies of ABT's standard warranties are available upon request.</p></div> | | | | |



ISOMETRIC VIEW
DO NOT SCALE



SECTION A-A
SCALE: 1/2



| BILL OF MATERIAL | | | | | |
|------------------|-----|---|-----------------------|----------|----------|
| ITEM | QTY | DESCRIPTION | MATERIAL | UNIT WT | TOTAL WT |
| 1 | 4 | MTG PLATE WELDMENT SE-SG-WMT | STEEL | 10.8 LBS | 43.2 LBS |
| 2 | 4 | FLAT-FREE TIRE & WHEEL ASSEMBLY MARATHON 4.10 / 3.50 - 4" / PART NO. 00210 | STEEL POLYURETHANE | 3.7 LBS | 14.8 LBS |
| 3 | 4 | HEX HEAD CAP SCREW 5/8"-11 X 5 1/2" LONG | STAINLESS STEEL | 0.5 LBS | 2.0 LBS |
| 4 | 4 | THIN HEX NUT WITH NYLON INSERT LOCKING 5/8"-11 THREAD | STAINLESS STEEL | 0.01 LBS | 0.05 LBS |
| 5 | 12 | HEX HEAD CAP SCREW 5/16"-18 X 2 3/4" LONG | STAINLESS STEEL | XX LBS | XX LBS |
| 6 | 12 | HEX NUT WITH NYLON INSERT LOCKING 5/16"-18 THREAD | STAINLESS STEEL | XX LBS | XX LBS |
| 7 | 1 | INSTALLATION INSTRUCTIONS SOCCER GOAL WHEEL KIT | --- | --- | --- |

APPROXIMATE SHIPPING WEIGHT 60.0 LBS

APPROXIMATE TOTAL WEIGHT FOR ONE WHEEL ASSEMBLY 15.0 LBS

ASSEMBLY INSTRUCTIONS:

- INSERT HEX HEAD CAP SCREW (ITEM 3) INTO TUBE OF MTG PLATE (ITEM 1).
- SLIDE WHEEL (ITEM 2) ON TO CAP SCREW WITH OFFSET TOWARD MTG PLATE.
- THREAD HEX LOCKING NUT ONTO CAP SCREW AND TIGHTEN UNTIL SNUGG.
(DO NOT OVER TIGHTEN). WHEEL MUST ROTATE FREELY.

NOTES:

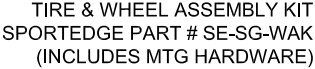
- TWO WHEEL ASSEMBLIES ARE REQUIRED PER SOCCER GOAL.
- REFER TO INSTALLATION INSTRUCTIONS FOR ATTACHMENT OF
WHEELS TO SOCCER GOALS.
- BILL OF MATERIAL QUANTITIES ARE FOR ONE FIELD INSTALLATION.

| | | | | |
|-----|---------------------------------------|-----|------|----------|
| 01 | ITEM #4 WAS STANDARD THICKNESS HEXNUT | FWS | — | 05/11/10 |
| 00 | ORIGINAL ISSUE | FWS | — | 06/16/09 |
| REV | DESCRIPTION | BY | CHKD | DATE |

| | | | |
|--|--------------|---|-----------|
| SportsEdge® A Division of ABT, Inc. P.O. Box 837 * 259 Mandeville Road Trenton, NC 28166 800-334-6057 | | FABRICATION DRAWING © 2009 SportsEdge WHEEL ASSEMBLY KIT SOCCER GOAL WHEEL KIT - REAR ATTACH. | |
| FILE: | SE-SG-WAK-01 | PART: | SE-SG-WAK |

Proprietary rights of ABT, Inc. are included in the information disclosed herein. The recipient, by accepting this document, agrees that neither this document nor the information disclosed herein nor any part thereof shall be copied, reproduced or transferred to others for manufacturing or for any other purpose except as specifically authorized in writing by ABT, Inc.

DISCLAIMER: The customer and the customer's architects, engineers, consultants and other professionals are completely responsible for the selection, installation, and maintenance of any product purchased from ABT, and EXCEPT AS EXPRESSLY PROVIDED IN ABT'S STANDARD WARRANTIES, ABT MAKES NO WARRANTY, EXPRESS OR IMPLIED, AS TO THE SUITABILITY, DESIGN, MERCHANTABILITY, OR FITNESS OF THE PRODUCT FOR CUSTOMER'S APPLICATION. Copies of ABT's standard warranties are available upon request.



1. SOCCER GOAL SHOULD BE SETUP ON LEVEL GROUND, BACKSTAYS CONTACTING AND LEVEL.
2. POSITION WHEEL AND MOUNT ASSEMBLY AS ILLUSTRATED WITH ARC PLATE AND MOUNTING PLATE AGAINST BACKSTAY TUBING.
3. ALLOW WHEEL AND MOUNT TO ROTATE DOWNWARD CONTACTING GROUND. CLAMP MOUNTING PLATE AND MATCH DRILL THROUGH TUBING WITH 11/32" DRILL BIT AT THE THREE HOLES.
4. INSTALL THREE 5/16"-18 X 2 3/4" LONG HEX HEAD CAP SCREWS AND HEX LOCKING NUTS PROVIDED.
DO NOT OVER TIGHTEN DISTORTING BACKSTAY TUBING.
5. REPEAT PROCESS FOR THE OTHER SIDE. WHEEL SHOULD ALWAYS BE OUTSIDE, WHEEL ASSEMBLY IS REVERSIBLE.
6. TO MOVE SOCCER GOAL, USE TWO PEOPLE, LIFT EACH FRONT CORNER AND DRAG, WHEEL WILL CONTACT UPON LIFTING FRONT CORNERS APPROXIMATELY THIRTY INCHES.
7. POSITION GOALS AND ANCHOR TO GROUND WITH ANY APPROVED METHOD.
8. **READ AND FOLLOW ALL GOAL ANCHORING INSTRUCTIONS PROVIDED BEFORE PLAY.**

| | | | | |
|---|----------------|--|------|----------|
| REV | ORIGINAL ISSUE | FWS | BY | 06/16/09 |
| 0 | DESCRIPTION | FY | CHKD | DATE |
| SportsEdge® A Division of ABT, Inc. P.O. Box 1837 • 2500 Maryland Road Treatman, NC 28166 800-334-6057 | | FABRICATION DRAWING © 2009 SportsEdge INSTALLATION INSTRUCTIONS SOCCER GOAL WHEEL KIT - REAR ATTACH. | | |
| FILE: SE-SG-WK-INST-00 | | PART: SE-SG-WK-INST | | |
| Proprietary rights of ABT, Inc. are indicated in the information disclosed herein. The recipient, by accepting this document, agrees that neither this document nor the information disclosed herein nor any part thereof shall be copied, reproduced or transferred or for any other purpose except as specifically authorized in writing by ABT, Inc. | | | | |
| DISCLAIMER: The customer and the customer's architects, engineers, consultants and other professionals are completely responsible for the selection, installation, and maintenance of any product produced from ABT, and EXCEPT AS EXPRESSLY PROVIDED IN ABT'S STANDARD WARRANTIES, ABT MAKES NO WARRANTY, EXPRESS OR IMPLIED, AS TO THE SUITABILITY, RELIABILITY, OR FITNESS OF THE PRODUCTS OR INFORMATION CONTAINED HEREIN FOR ANY PARTICULAR PURPOSE. All warranties are available upon request. | | | | |

