

SportsEdge®

Safety. Quality. Versatility. Esthetics.



PRO-S
CHANNEL
DRAIN SYSTEM

www.sportsedge.com

PRO-S Channel Drain System

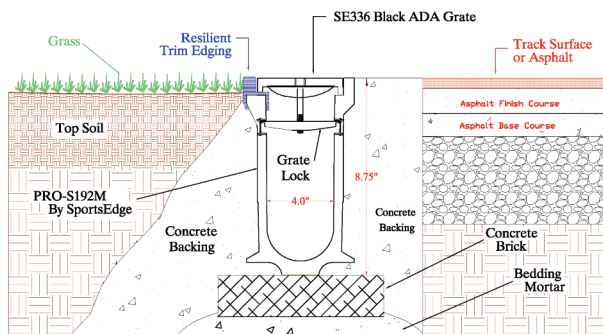
ABT, Inc. manufactures all of the SportsEdge® drain systems; the standard for track, tennis court, and other sports field surface drainage requirements. SportsEdge Pro-S Channel Drain is designed to be used in any track, tennis court, baseball backstop, bleacher area, synthetic turf field applications, or anywhere surface drainage is required.

SportsEdge Pro-S is manufactured of polymer concrete, a blend of select quartz aggregate and inert mineral fillers bonded together with high-grade thermo set polyester resin; creating products of superior strength, chemical resistance, and durability. Polymer concrete allows no absorption, thus, is resistant to freeze-thaw cycles, and is also highly UV resistant. These properties make it an ideal material for external environmental conditions worldwide.

SportsEdge PRO-S drainage channels feature a radius bottom, smooth interior surface, interlocking tongue and groove ends and the patented "Red Dot" grate locking system.



NEW!



ProProtect CHANNEL DRAIN SYSTEM



ProProtect Channel with resilient protective edging for use in applications where the drain channel edge may be exposed and pose a risk to athletes.



Grates

Grate system options include slotted or perforated galvanized steel, thermoplastic and ductile iron. Steel drainage grates are available in one meter and half meter lengths. The thermo-plastic and ductile iron grates are available in half meter lengths. Please see the key for grates that meet ADA requirements. All grates lock securely to the channel with a hands-free locking device consisting of a bolt and toggle bar.

Perforated Heel-Proof Grates

Part No.	Material	Length in (m)	Weight lb (kg)	Locking Device
♿ 410	Galvanized steel	39.19 (1.0)	6 (2.7)	810A
♿ 411	Galvanized steel	19.60 (0.5)	3 (1.4)	810A

Reinforced Perforated Heel-Proof Grates

Part No.	Material	Length in (m)	Weight lb (kg)	Locking Device
♿ 412	Galvanized steel	39.19 (1.0)	8 (3.6)	810A
♿ 413	Galvanized steel	19.60 (0.5)	4 (1.8)	810A

Slotted Steel Grates

Part No.	Material	Length in (m)	Weight lb (kg)	Locking Device
420	Galvanized steel	39.19 (1.0)	6 (2.7)	811A
421	Galvanized steel	19.60 (0.5)	3 (1.4)	811A

Plastic Heel-Proof Grates

♿ 336	Thermo-plastic	Herringbone	19.60 (0.5)	1.1 (.50)	2840.25A
-------	----------------	-------------	-------------	-----------	----------

Longitudinally Slotted Grates

Part No.	Material*	Length in (m)	Weight lb (kg)	Locking Device
♿H20 504	Ductile iron Longitudinal	19.60 (0.5)	10 (4.5)	811B

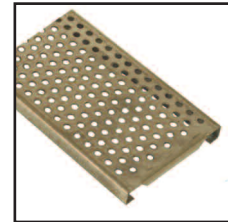
Ornamental Ductile Iron Grate

Part No.	Material*	Length in (m)	Weight lb (kg)	Locking Device
♿H20 507	Ductile iron Ornamental	19.60 (0.5)	10 (4.5)	811B
♿H20 506	Ductile iron Herringbone	19.60 (0.5)	7 (3.2)	811B

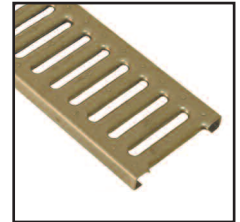
Key to special compliance grates

♿ Meets Americans with Disabilities Act (ADA) Requirements

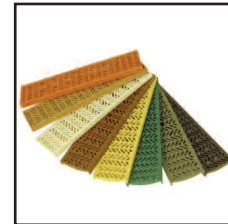
H20 Meets or exceeds all AASHTO grate load standards



410 Galvanized Perforated



420 Galvanized Slotted



336 Thermoplastic Herringbone



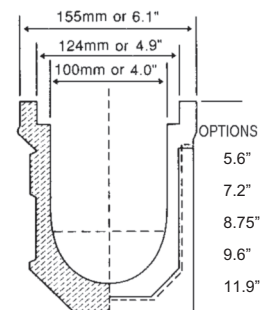
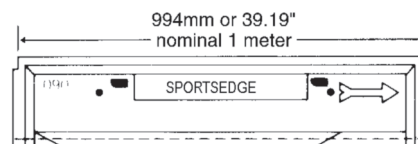
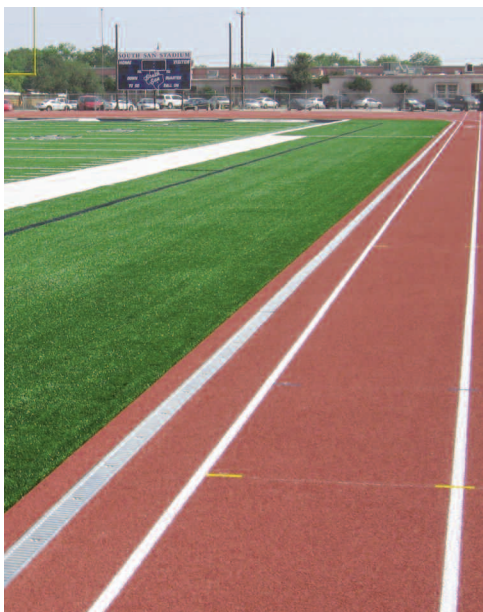
504 Ductile Iron Longitudinal



507 Ductile Iron Ornamental



506 Ductile Iron Herringbone



CHANNEL SPECIFICATIONS

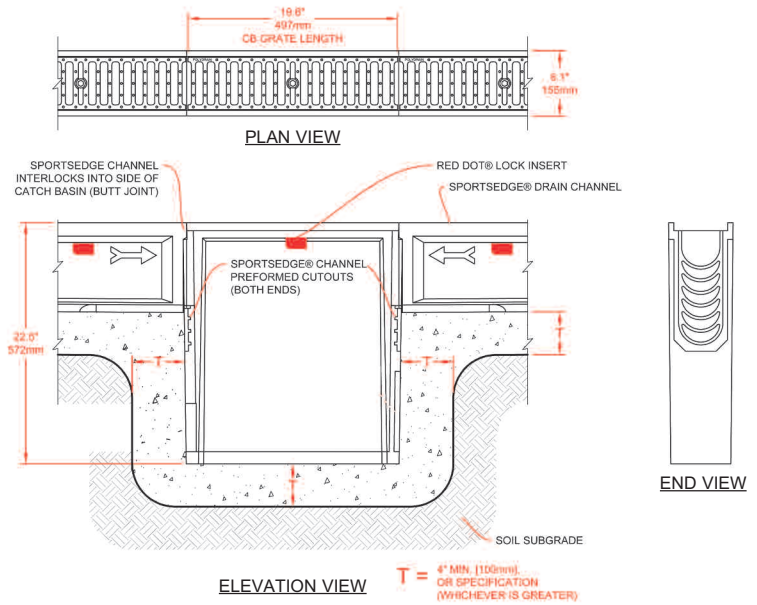
PART #	WIDTH I.D.	WIDTH O.D.	DEPTH O.D.	LENGTH	WEIGHT LBS.
S-021	4.0"	6.1"	5.6"	39.19"	32.0
S-091	4.0"	6.1"	7.2"	39.19"	37.4
S-192	4.0"	6.1"	8.75"	39.19"	42.0
S-192M	4.0"	6.1"	8.75"	39.19"	40.5
S-191	4.0"	6.1"	9.6"	39.19"	46.6
S-291	4.0"	6.1"	11.9"	39.19"	53.4



Catch Basins

The SportsEdge 1/2 meter long 900 catch basins can be located anywhere to facilitate storm drain connections. A typical 400 meter track will include a minimum of eight catch basins. These in-line basins are the same width as the channels so they blend seamlessly into the layout. Catch basins can accommodate up to 12" CMP, HDPE or PVC pipe.

SPORTSEGE 900 CATCH BASIN



NOTE: OUTLETS AS LARGE AS 12" (300mm) MAY ALSO BE CUT OUT ON THE 900 CATCH BASIN.

Channel Drain End Plates, Outlets & Accessories

The closed end plate terminates open channel runs. Four inch (4") or six inch (6") outlet end plates are used for direct channel discharge when required. The XTPC is used to transition from PRO Channel Drain to XT Slot Drain in the radius or high jump area.



XTPC



End Plates/Outlets



2231 Shovel Head



Locking
Locking Device



Proud Member
SportsTurf
MANAGERS ASSOCIATION
Experts on the Field, Partners in the Game.



All products available
in Canada & Mexico



DISCLAIMER The customer and the customer's architects, engineers, consultants and other professionals are completely responsible for the selection, installation, and maintenance of any product purchased from ABT, and EXCEPT AS EXPRESSLY PROVIDED IN ABT'S STANDARD WARRANTIES, ABT MAKES NO WARRANTY, EXPRESS OR IMPLIED, AS TO THE SUITABILITY, DESIGN, MERCHANTABILITY, OR FITNESS OF THE PRODUCT FOR CUSTOMER'S APPLICATION. Copies of ABT's standard warranties are available upon request.



800-334-6057
www.sportsedge.com

ABT, INC.