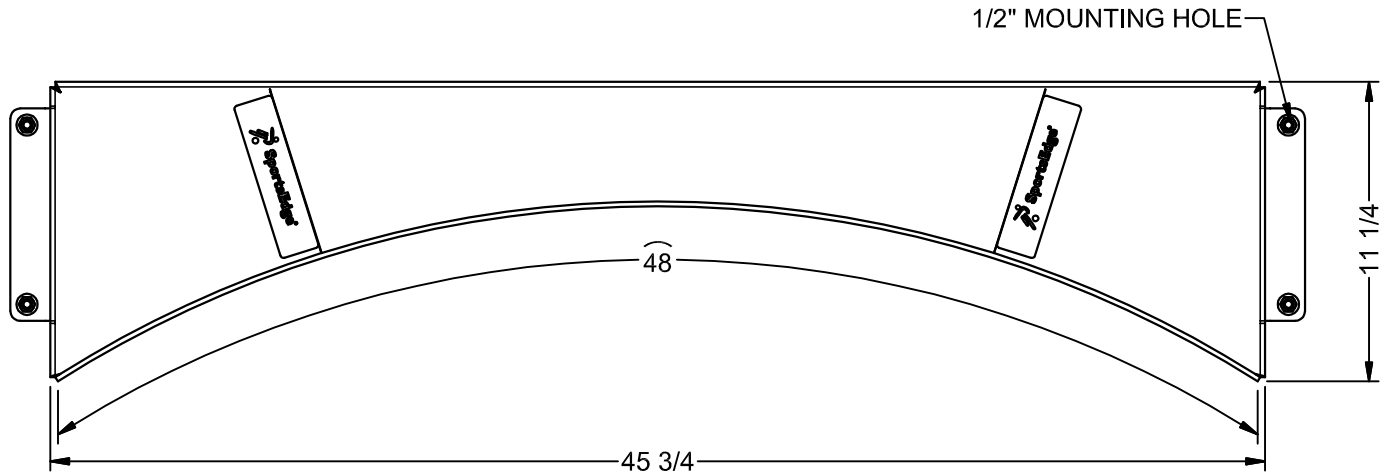


SE3631 - ALUMINUM TOEBOARD, DEPRESSED PAD

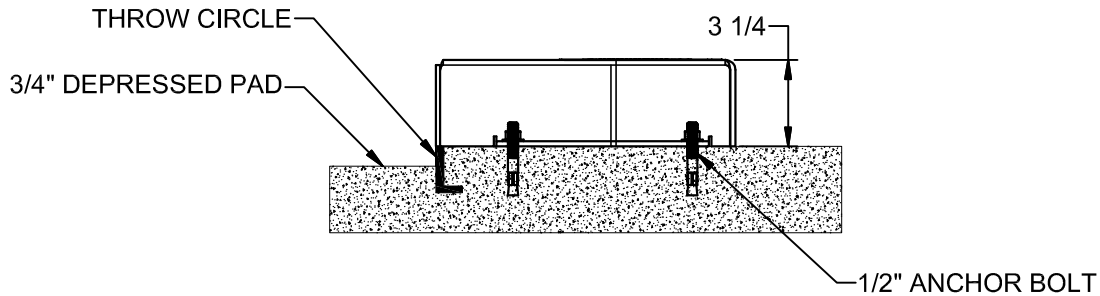
Specifications:

- Designed to be used with a 3/4" depressed throwing surface formed by an aluminum shot circle embedded in the concrete pad
- Fabricated from 3/16" thick Aluminum 5052-H32
- Coated with a durable white powder coat paint
- Meets all NFSHSA, NCAA, and IAAF requirements



TOP VIEW

DIMENSIONS IN INCHES



END SECTION VIEW

SportsEdge
 A Division of ABT, Inc.
 P.O. Box 837 / 259 Murdock Road
 Troutman, NC 28166
 (800) 334-6057

PRODUCT DETAIL © 2019 ABT, Inc.
**ALUMINUM TOEBOARD
 DEPRESSED PAD**

PART:

SE3631

**REV: 00
 7/22/2019**

Proprietary rights of ABT, Inc. are included in the information disclosed herein. The recipient, by accepting this document, agrees that neither this document nor the information disclosed herein nor any part thereof shall be copied, reproduced or transferred to others for manufacturing or for any other purpose except as specifically authorized in writing by ABT, Inc.

DISCLAIMER: The customer and the customer's architects, engineers, consultants and other professionals are completely responsible for the selection, installation, and maintenance of any product purchased from ABT, and EXCEPT AS EXPRESSLY PROVIDED IN ABT'S STANDARD WARRANTIES, ABT MAKES NO WARRANTY, EXPRESS OR IMPLIED, AS TO THE SUITABILITY, DESIGN, MERCHANTABILITY, OR FITNESS OF THE PRODUCT FOR THE CUSTOMER'S APPLICATION. Copies of ABT's standard warranties are available upon request.