

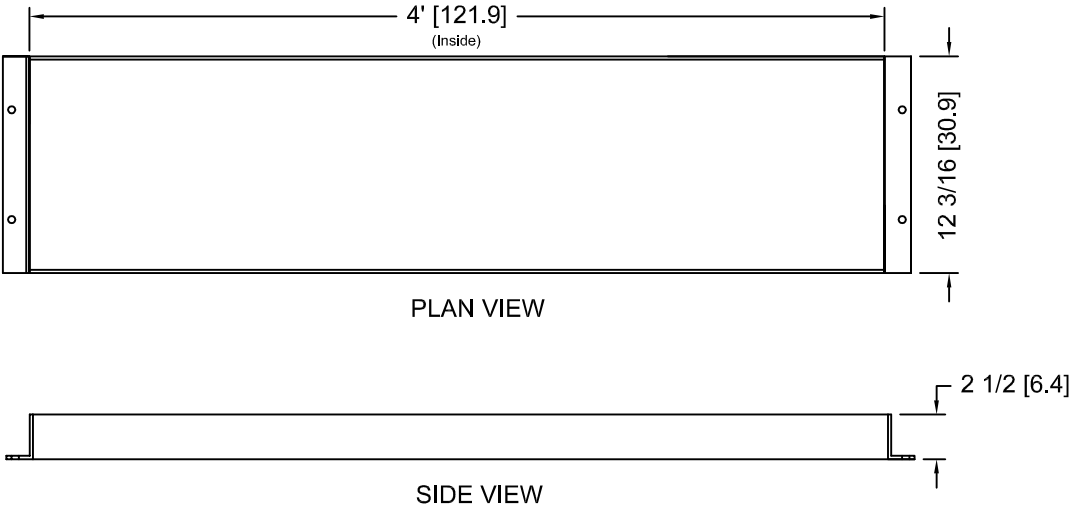
SE43501 - IAAF ADJUSTABLE ALUMINUM TAKE-OFF BOARD SYSTEM

SPECIFICATIONS

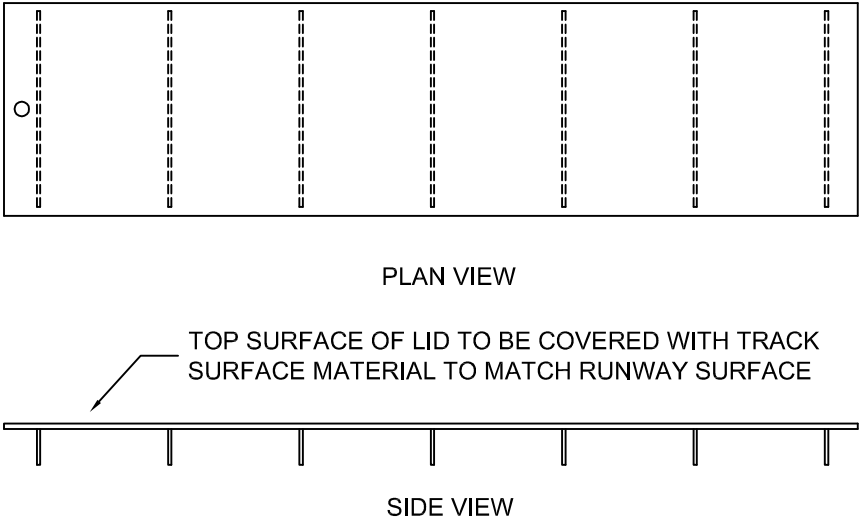
The SE43501 IAAF Adjustable Aluminum Take-off Board System consists of an aluminum tray assembly with a cover, a leveling board, and separate take-off and foul boards. The tray is fabricated from 3/16" [4.8mm] thick 6061-T6 aluminum sheet and angle which is securely welded together. The lid is fabricated from a 5/16" [7.9mm] thick 6061-T6 aluminum sheet top and 3/16" [4.8mm] thick supports. The tray is designed to be incorporated into runways and holds the take-off board flush with the runway surface.

When the take-off boards are not in use, the lid replaces the boards, and (with the appropriate runway surface mounted to it) will fill the tray flush with the runway. The leveling board is fitted with six adjustable leveling feet and two lateral adjustments to eliminate any motion in the tray and ensure a flush fit for the takeoff board. Takeoff and foul boards are fabricated from MDO plywood that is sealed and painted with outdoor enamel coating. Dimensions in brackets are in centimeters. IAAF certified.

TAKE-OFF BOARD TRAY



LID FOR TRAY

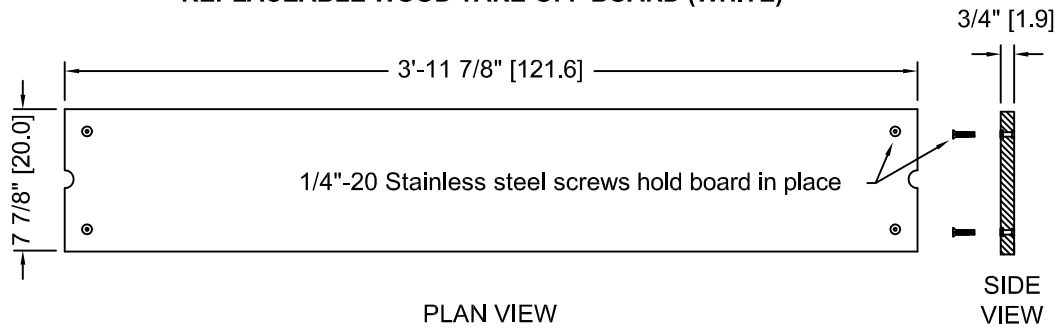


Proprietary rights of ABT, Inc. are included in the information disclosed herein. The recipient, by accepting this document, agrees that neither this document nor the information disclosed herein nor any part thereof shall be copied, reproduced or transferred to others for manufacturing or for any other purpose except as specifically authorized in writing by ABT, Inc..

SportsEdge A Division of ABT, Inc. P.O. Box 837 * 259 Murdock Road Troutman, NC 28166 800-334-6057		TITLE: SE43501 IAAF Take-Off Board System	
DRAWN BY:	M.D.H.	CHECKED BY:	
SCALE:	NONE	DATE:	3/17/04
		DRAWING NUMBER:	A- SE43501-1
<small>DISCLAIMER: The customer and the customer's architects, engineers, consultants and other professionals are completely responsible for the selection, installation, and maintenance of any product purchased from ABT, and EXCEPT AS EXPRESSLY PROVIDED IN ABT'S STANDARD WARRANTIES, ABT MAKES NO WARRANTY, EXPRESS OR IMPLIED, AS TO THE SUITABILITY, DESIGN, MERCHANTABILITY, OR FITNESS OF THE PRODUCT FOR CUSTOMER'S APPLICATION. Copies of ABT's standard warranties are available upon request.</small>			

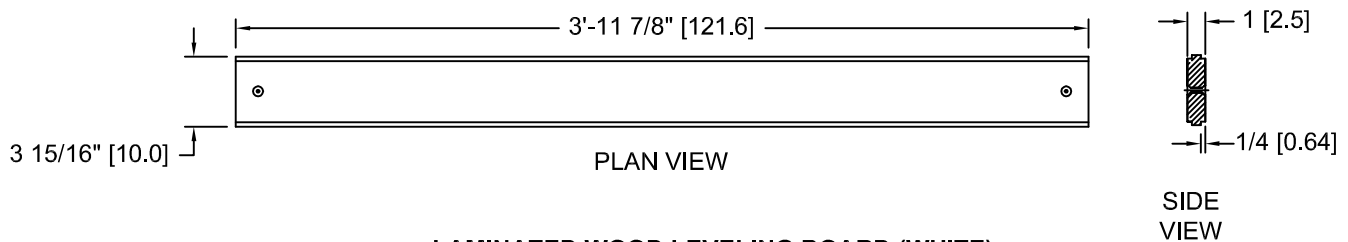
SE43501 - IAAF ADJUSTABLE ALUMINUM TAKE-OFF BOARD SYSTEM TAKE-OFF AND FOUL BOARDS

REPLACEABLE WOOD TAKE-OFF BOARD (WHITE)

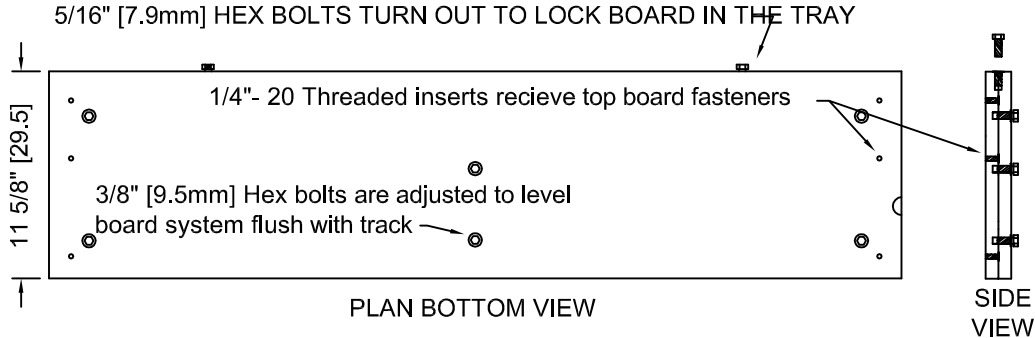


IAAF WOOD FOUL BOARD (ORANGE)

This foul board sits raised and notched above the runway in accordance with IAAF rules.



LAMINATED WOOD LEVELING BOARD (WHITE)



COMPLETE BOARD ASSEMBLY

When in place foul board covers the gap for the locking bolts.



SIDE SECTION VIEW

NOTE: If allowed to rest in standing water, wooden take-off boards are subject to swelling. This tendency may cause permanent damage to the board. Runway recesses for take-off boards should be drained and the boards held up off the bottom with wood or metal spacers.

Proprietary rights of ABT, Inc. are included in the information disclosed herein. The recipient, by accepting this document, agrees that neither this document nor the information disclosed herein nor any part thereof shall be copied, reproduced or transferred to others for manufacturing or for any other purpose except as specifically authorized in writing by ABT, Inc..

SportsEdge

A Division of ABT, Inc.
P.O. Box 837 * 259 Murdock Road
Troutman, NC 28166
800-334-6057

TITLE: SE43501 IAAF Take-Off Board System

DRAWN BY: M.D.H.

CHECKED BY:

SCALE: NONE

DATE: 3/17/04

DRAWING NUMBER:

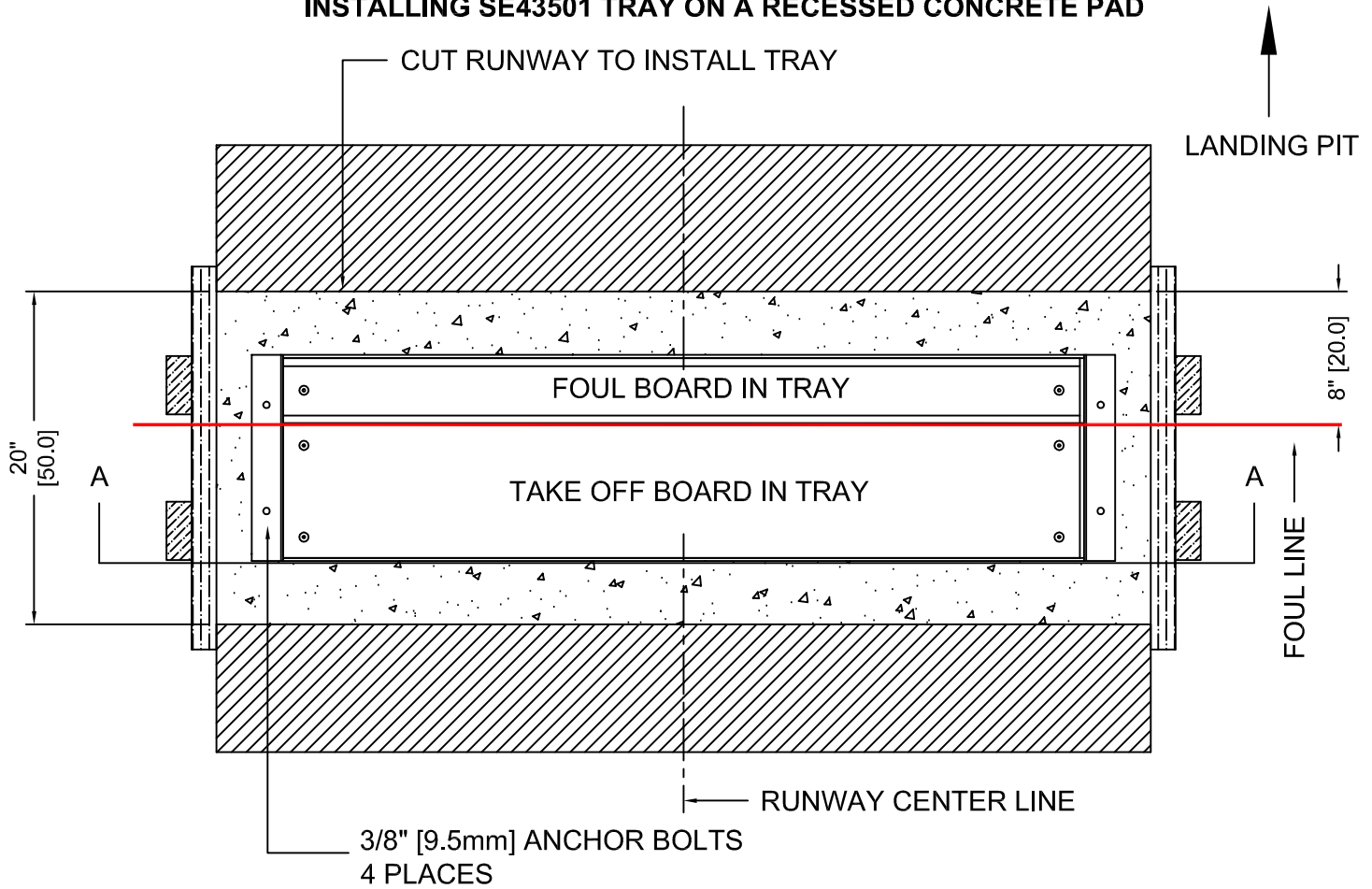
A-

SE43501-2

DISCLAIMER: The customer and the customer's architects, engineers, consultants and other professionals are completely responsible for the selection, installation, and maintenance of any product purchased from ABT, and EXCEPT AS EXPRESSLY PROVIDED IN ABT'S STANDARD WARRANTIES, ABT MAKES NO WARRANTY, EXPRESS OR IMPLIED, AS TO THE SUITABILITY, DESIGN, MERCHANTABILITY, OR FITNESS OF THE PRODUCT FOR CUSTOMER'S APPLICATION. Copies of ABT's standard warranties are available upon request.

SE43501 - IAAF ADJUSTABLE ALUMINUM TAKE-OFF BOARD SYSTEM INSTALLATION

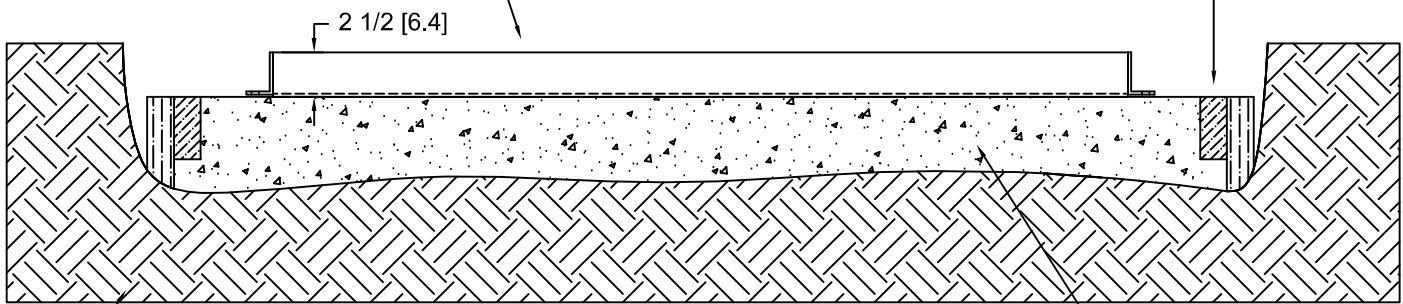
INSTALLING SE43501 TRAY ON A RECESSED CONCRETE PAD



PLAN VIEW

ANCHOR TRAY IN PLACE
AFTER CONCRETE HAS SET

TOP OF FORMS SET 3" [7.6cm] BELOW
SURFACE LEVEL OF FINISHED RUNWAY



AGGREGATE/SUBGRADE

SECTION "A-A"

CONCRETE

NOTE: The surface level of the finished runway includes the actual thickness of the artificial runway surface to be applied to the concrete or asphalt runway.

Proprietary rights of ABT, Inc. are included in the information disclosed herein. The recipient, by accepting this document, agrees that neither this document nor the information disclosed herein nor any part thereof shall be copied, reproduced or transferred to others for manufacturing or for any other purpose except as specifically authorized in writing by ABT, Inc..

SportsEdge

A Division of ABT, Inc.
P.O. Box 837 * 259 Murdock Road
Troutman, NC 28166
800-334-6057

TITLE:

SE43501 - Installation

DRAWN BY:

M.D.H.

CHECKED BY:

DATE: 3/17/04

SCALE:

NONE

DRAWING NUMBER:

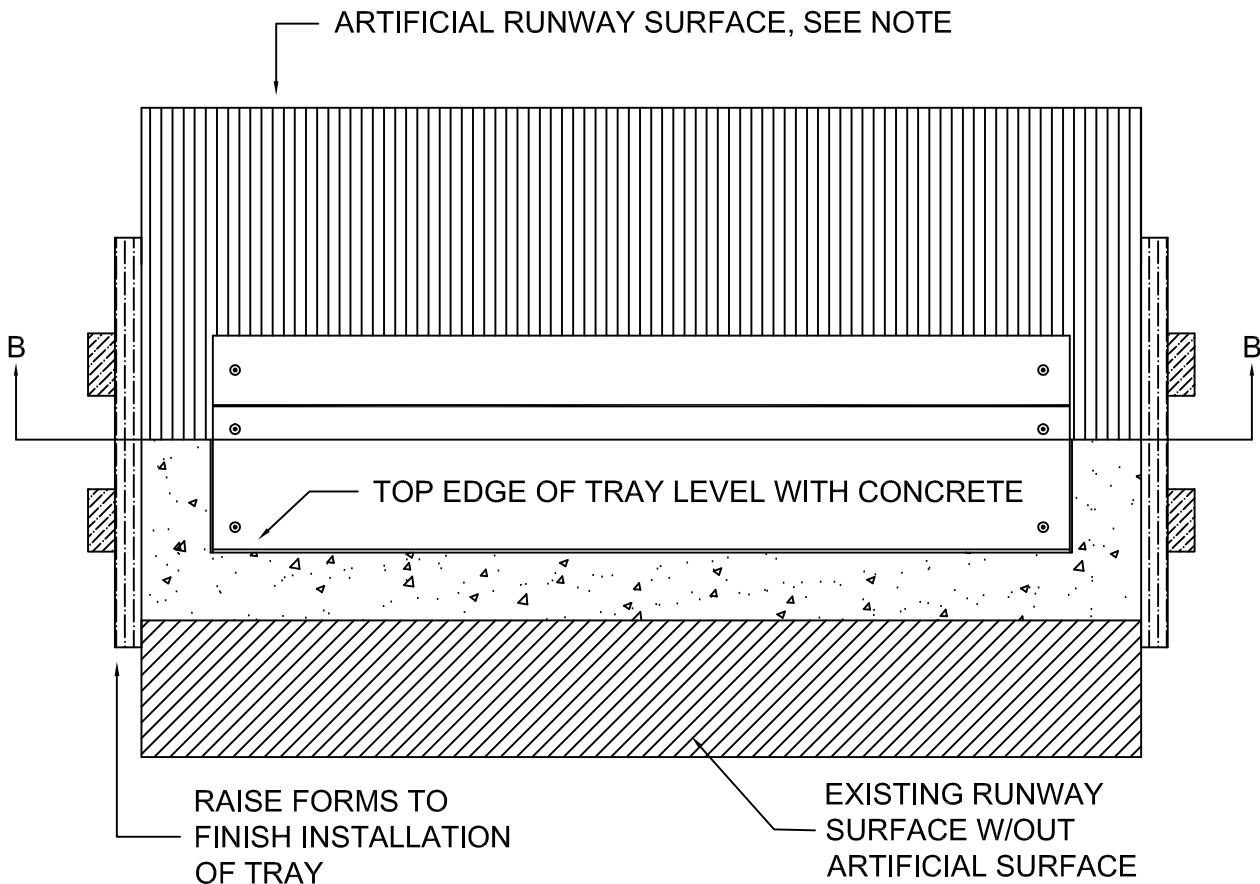
A-

SE43501-3

DISCLAIMER: The customer and the customer's architects, engineers, consultants and other professionals are completely responsible for the selection, installation, and maintenance of any product purchased from ABT, and EXCEPT AS EXPRESSLY PROVIDED IN ABT'S STANDARD WARRANTIES, ABT MAKES NO WARRANTY, EXPRESS OR IMPLIED, AS TO THE SUITABILITY, DESIGN, MERCHANTABILITY, OR FITNESS OF THE PRODUCT FOR CUSTOMER'S APPLICATION. Copies of ABT's standard warranties are available upon request.

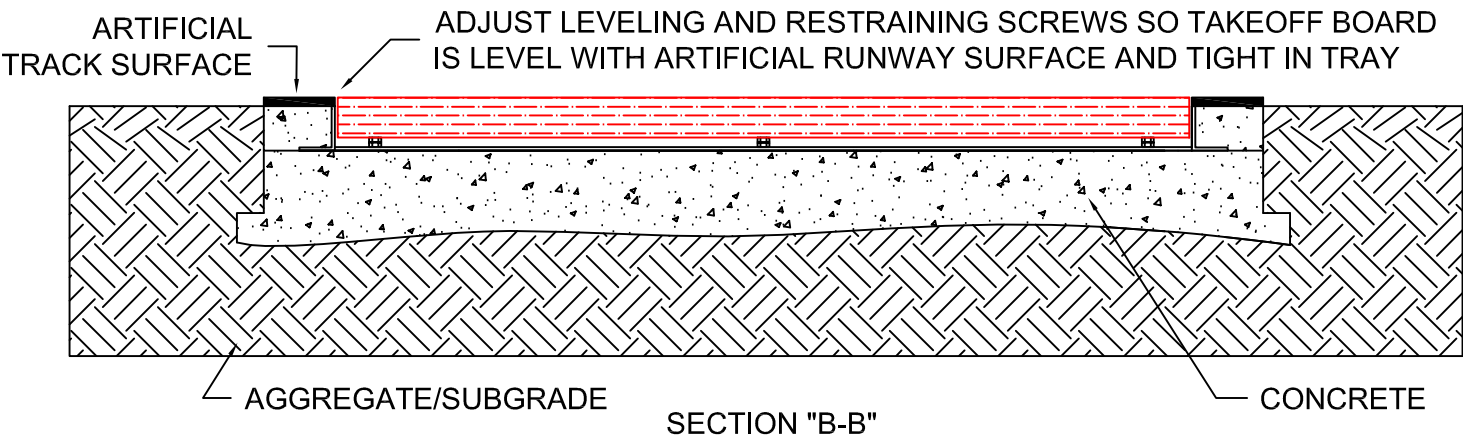
SE43501 - IAAF ADJUSTABLE ALUMINUM TAKE-OFF BOARD
SYSTEM INSTALLATION

FINISHING INSTALLATION



NOTE:

1. Artificial runway surface should be trimmed even with the inside edge of the tray.
2. If tray is installed in an asphalt runway without an artificial surface, the top edge of the tray should be 1/2" [12mm] below the asphalt runway.



INSTALLATION FINISHED WITH TAKE-OFF BOARD INSTALLED

Proprietary rights of ABT, Inc. are included in the information disclosed herein. The recipient, by accepting this document, agrees that neither this document nor the information disclosed herein nor any part thereof shall be copied, reproduced or transferred to others for manufacturing or for any other purpose except as specifically authorized in writing by ABT, Inc..

SportsEdge A Division of ABT, Inc. P.O. Box 837 * 259 Murdock Road Troutman, NC 28166 800-334-6057		TITLE: SE43501 - Installation	
DRAWN BY: M.D.H.	CHECKED BY:	DRAWING NUMBER: SE43501-4	
SCALE: NONE	DATE: 3/17/04		
DISCLAIMER: The customer and the customer's architects, engineers, consultants and other professionals are completely responsible for the selection, installation, and maintenance of any product purchased from ABT, and EXCEPT AS EXPRESSLY PROVIDED IN ABT'S STANDARD WARRANTIES, ABT MAKES NO WARRANTY, EXPRESS OR IMPLIED, AS TO THE SUITABILITY, DESIGN, MERCHANTABILITY, OR FITNESS OF THE PRODUCT FOR CUSTOMER'S APPLICATION. Copies of ABT's standard warranties are available upon request.			