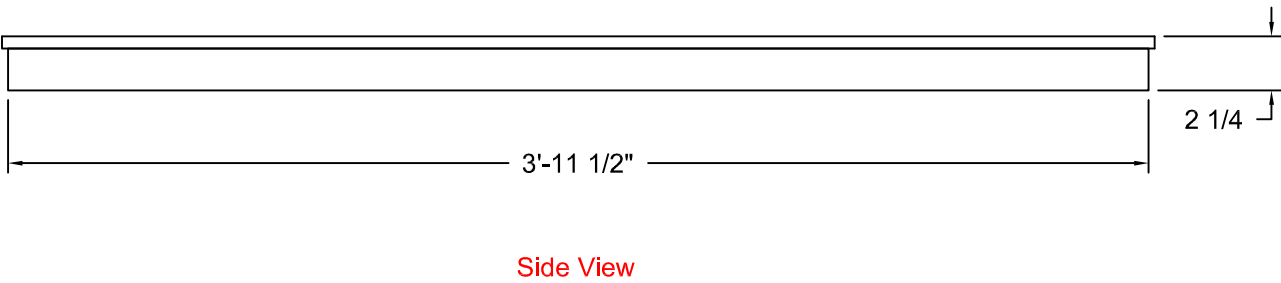
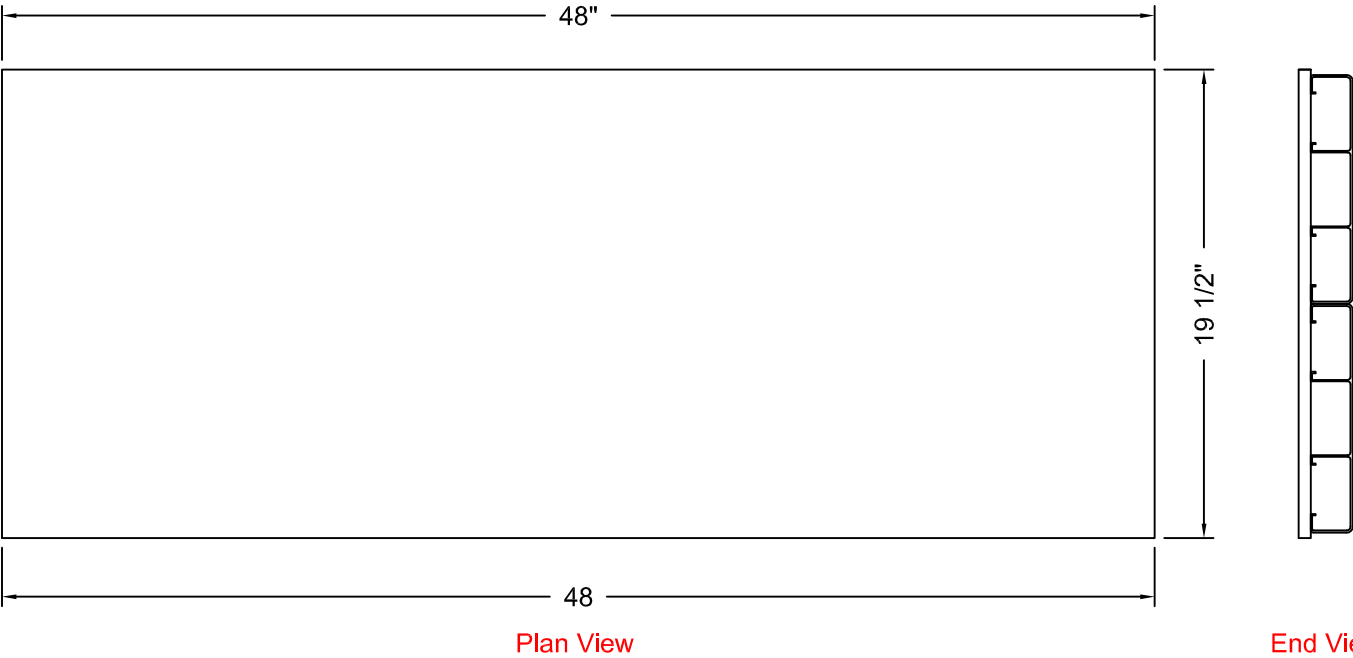


SE441 - WOOD HIGH SCHOOL TAKE-OFF BOARD

SPECIFICATIONS

The SE441 Wood High School Take-off Board is fabricated from 1/2" marine plywood and finished in white outdoor enamel. Each board is attached to sturdy aluminum seat planking, to resist weathering and deformation. The SE441 take-off board meets NFSHSA requirements for high school use and can be used on its own or with the SportsEdge SE442 Aluminum High School Take-off Tray.



NOTE: As with all wooden take-off boards, if allowed to sit in standing water the board will eventually swell. This condition can cause permanent damage to the board. To maximize service life, runway recesses for take-off boards should be drained. The seat plank base elevates the board from the bottom of the tray - providing 1 3/4" clearance from standing water.

Proprietary rights of ABT, Inc. are included in the information disclosed herein. The recipient, by accepting this document, agrees that neither this document nor the information disclosed herein nor any part thereof shall be copied, reproduced or transferred to others for manufacturing or for any other purpose except as specifically authorized in writing by ABT, Inc..

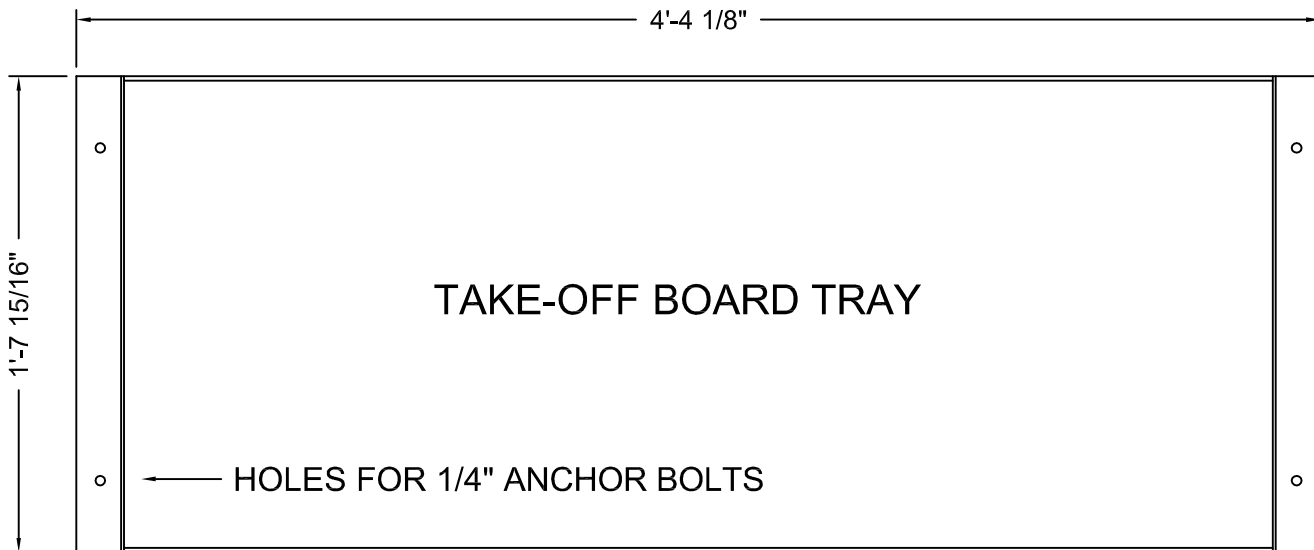
<b>SportsEdge</b> A Division of ABT, Inc. P.O. Box 837 * 259 Murdock Road Troutman, NC 28166 800-334-6057	<b>TITLE:</b> SE441 High School Take-Off Board		
	<b>DRAWN BY:</b> M.D.H.	<b>CHECKED BY:</b>	<b>DRAWING NUMBER:</b> SE441
	<b>SCALE:</b> NONE	<b>DATE:</b> 3/17/04	<b>A-</b>
<small><b>DISCLAIMER:</b> The customer and the customer's architects, engineers, consultants and other professionals are completely responsible for the selection, installation, and maintenance of any product purchased from ABT, and EXCEPT AS EXPRESSLY PROVIDED IN ABT'S STANDARD WARRANTIES, ABT MAKES NO WARRANTY, EXPRESS OR IMPLIED, AS TO THE SUITABILITY, DESIGN, MERCHANTABILITY, OR FITNESS OF THE PRODUCT FOR CUSTOMER'S APPLICATION. Copies of ABT's standard warranties are available upon request.</small>			

# SE442 - HIGH SCHOOL ALUMINUM TAKE-OFF BOARD TRAY

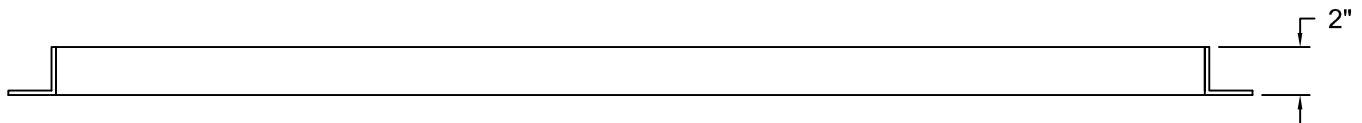
## SPECIFICATIONS

The SE442 High School Aluminum Take-off Board Tray is designed to hold the SE441 take-off board which is purchased separately. The tray assembly is fabricated from 3/16" thick 6061-T6

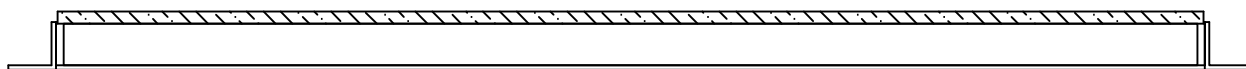
aluminum sheet and angle which is formed and securely welded together. The take-off tray is incorporated into the runway and holds the take-off board flush with the runway surface.



PLAN VIEW



SIDE VIEW



CUTAWAY SHOWN WITH 441 BOARD

Proprietary rights of ABT, Inc. are included in the information disclosed herein. The recipient, by accepting this document, agrees that neither this document nor the information disclosed herein nor any part thereof shall be copied, reproduced or transferred to others for manufacturing or for any other purpose except as specifically authorized in writing by ABT, Inc..

**SportsEdge**

A Division of ABT, Inc.  
P.O. Box 837 \* 259 Murdock Road  
Troutman, NC 28166  
800-334-6057

**TITLE:** SE442 High School Take-Off Board Tray

**DRAWN BY:** M.D.H.

**CHECKED BY:**

**SCALE:** NONE

**DATE:** 3/17/04

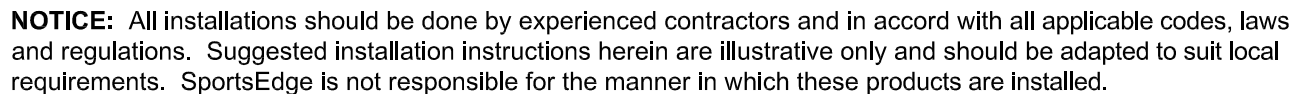
**DRAWING NUMBER:**

**A-**

SE442-1

**DISCLAIMER:** The customer and the customer's architects, engineers, consultants and other professionals are completely responsible for the selection, installation, and maintenance of any product purchased from ABT, and EXCEPT AS EXPRESSLY PROVIDED IN ABT'S STANDARD WARRANTIES, ABT MAKES NO WARRANTY, EXPRESS OR IMPLIED, AS TO THE SUITABILITY, DESIGN, MERCHANTABILITY, OR FITNESS OF THE PRODUCT FOR CUSTOMER'S APPLICATION. Copies of ABT's standard warranties are available upon request.

## INSTALLING SE442 TRAY ON A RECESSED CONCRETE PAD

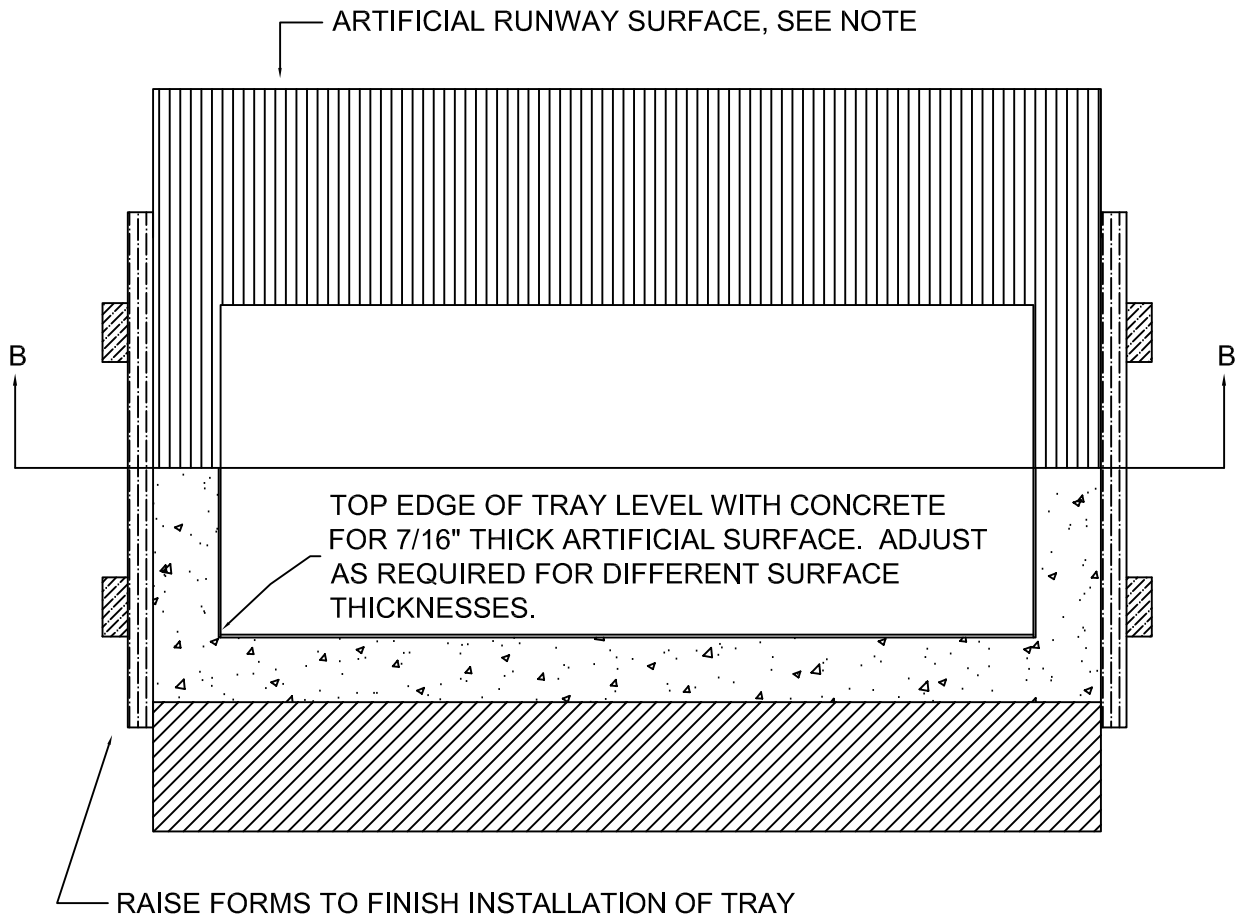


SE442-2

**DISCLAIMER:** The customer and the customer's architects, engineers, consultants and other professionals are completely responsible for the selection, installation, and maintenance of any product purchased from ABT, and EXCEPT AS EXPRESSLY PROVIDED IN ABT'S STANDARD WARRANTIES, ABT MAKES NO WARRANTY, EXPRESS OR IMPLIED, AS TO THE SUITABILITY, DESIGN, MERCHANTABILITY, OR FITNESS OF THE PRODUCT FOR CUSTOMER'S APPLICATION. Copies of ABT's standard warranties are available upon request.

# SE442 - ALUMINUM HIGH SCHOOL TAKE-OFF BOARD TRAY INSTALLATION

## FINISHING INSTALLATION

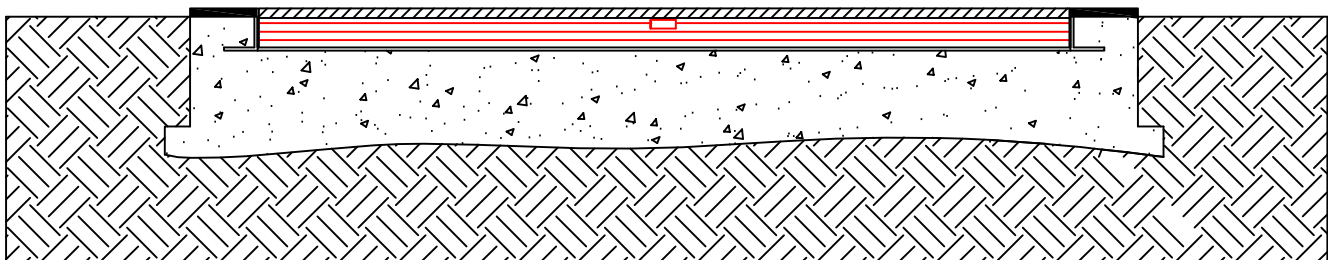


### NOTE:

1. Artificial runway surface should be trimmed even with the inside edge of the tray.
2. If tray is installed in an asphalt runway without an artificial surface, the top edge of the tray should be 7/16" below the asphalt runway.

### SECTION "A-A"

WOOD TAKE-OFF SURFACE



### SECTION "B-B"

INSTALLATION FINISHED WITH SE441 TAKE-OFF BOARD INSTALLED

Proprietary rights of ABT, Inc. are included in the information disclosed herein. The recipient, by accepting this document, agrees that neither this document nor the information disclosed herein nor any part thereof shall be copied, reproduced or transferred to others for manufacturing or for any other purpose except as specifically authorized in writing by ABT, Inc..

**SportsEdge**

A Division of ABT, Inc.  
P.O. Box 837 \* 259 Murdock Road  
Troutman, NC 28166  
800-334-6057

### TITLE:

SE442 - INSTALLATION

DRAWN BY:

M.D.H.

CHECKED BY:

SCALE:

NONE

DATE: 3/17/04

DRAWING NUMBER:

**A-**

SE442-3

DISCLAIMER: The customer and the customer's architects, engineers, consultants and other professionals are completely responsible for the selection, installation, and maintenance of any product purchased from ABT, and EXCEPT AS EXPRESSLY PROVIDED IN ABT'S STANDARD WARRANTIES, ABT MAKES NO WARRANTY, EXPRESS OR IMPLIED, AS TO THE SUITABILITY, DESIGN, MERCHANTABILITY, OR FITNESS OF THE PRODUCT FOR CUSTOMER'S APPLICATION. Copies of ABT's standard warranties are available upon request.