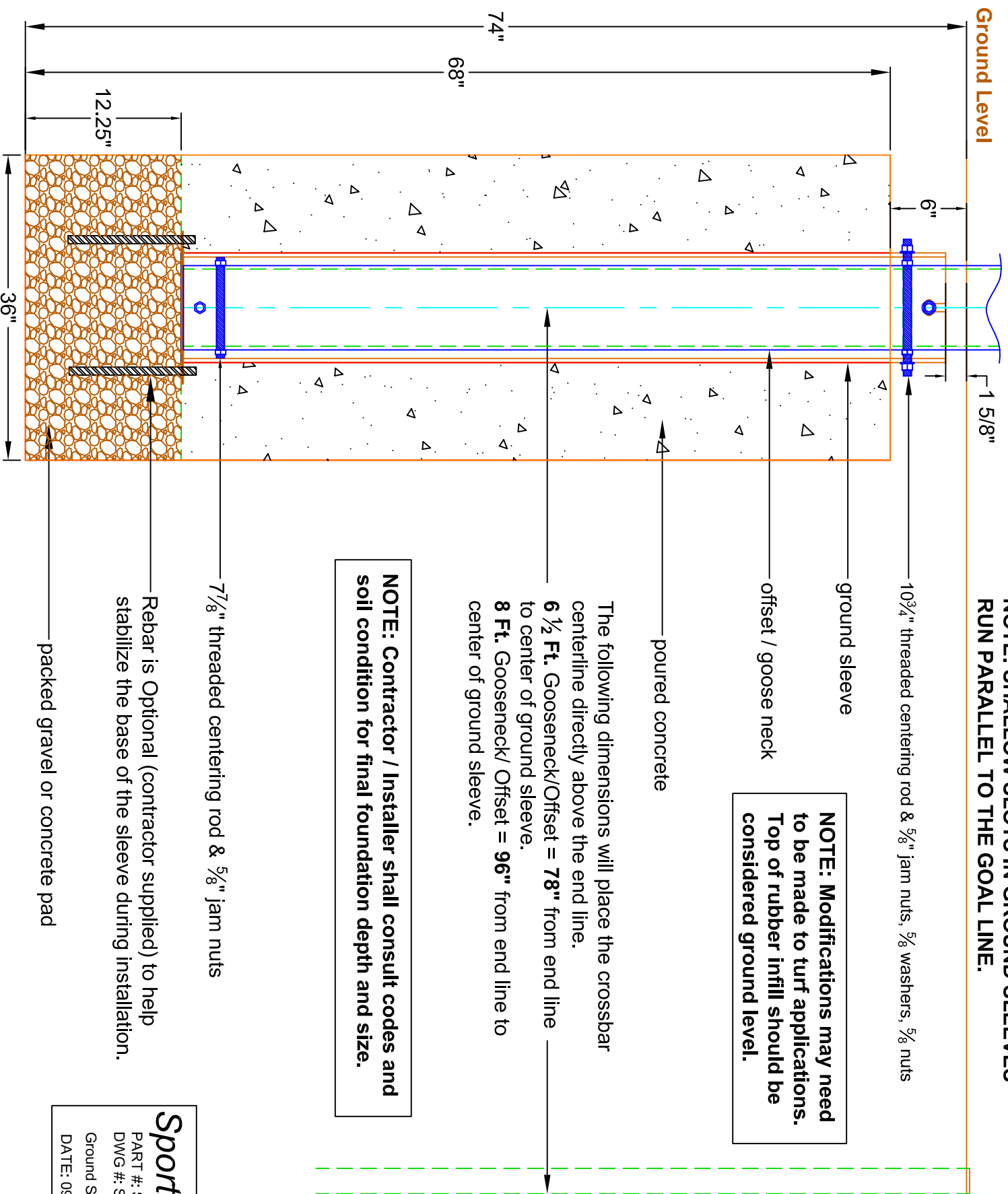


Ground Level

**NOTE: SHALLOW SLOTS IN GROUND SLEEVES
RUN PARALLEL TO THE GOAL LINE.**

End Line



NOTE: Modifications may need to be made to turf applications. Top of rubber infill should be considered ground level.

The following dimensions will place the crossbar centerline directly above the end line.
6 1/2 Ft. Gooseneck/Offset = 78" from end line to center of ground sleeve.
8 Ft. Gooseneck/ Offset = 96" from end line to center of ground sleeve.

NOTE: Contractor / Installer shall consult codes and soil condition for final foundation depth and size.

7 7/8" threaded centering rod & 5/8" jam nuts
Rebar is Optional (contractor supplied) to help stabilize the base of the sleeve during installation.
packed gravel or concrete pad

SportsEdge®
PART #: SEF30005
DWG #: SEF30005inst
Ground Sleeve Installation
DATE: 09/07/06