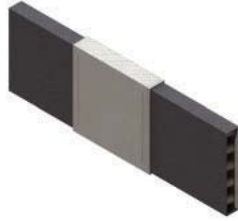


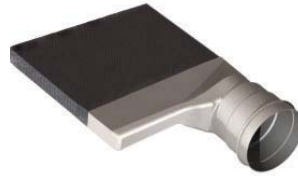
## FITTINGS



**6" End Outlet**



**6" Splice**



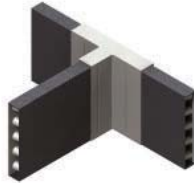
**12" End Outlet**



**12" 90° L**



**6" Corner Fitting**



**6" or Universal Tee**



**Universal Tee Outlet**

### OUTLETS:

Fittings are available to connect SportsEdge® HQ to 4" pipe. These are available in several configurations, depending on drain width and pipe location. Details are available upon request.

### SPLICES & 90° TURNS:

Splices are available for 6" SportsEdge® HQ. Other widths are spliced by peeling back the fabric and interlocking the dimpled core. Afterwards, replace the fabric and secure with tape. Ninety degree L's are available for 6" or 12" HQ.

### CORNERS:

Fittings are available for bending drain around corners. Detailed instructions for installation of fittings available upon request.

## RECYCLED CONTENT:

**SportsEdge® Panel Drain products  
are manufactured with post industrial  
recycled content.**

