

TERMINATOR[™]

XT-8 Collector Suspended Installation



Please read carefully. Read installation instructions from beginning to end before beginning the installation.

Materials List (*Not all Materials are supplied by SportsEdge)

XT-8 Collector Channels & Catch Basins

PVC Joint Couplers

Endplates, Corner Pieces, Adapters

3/8" x 8" Eye Bolts W/ Nuts & Washers

*Concrete Forms / Form Lumber

*Grade Stakes

*2" X 4" X 24" Suspension Lumber

*2" Wide Duct Tape; Enough for entire length of both rows of openings

*Concrete Saw W/ Diamond Blade

*Drill

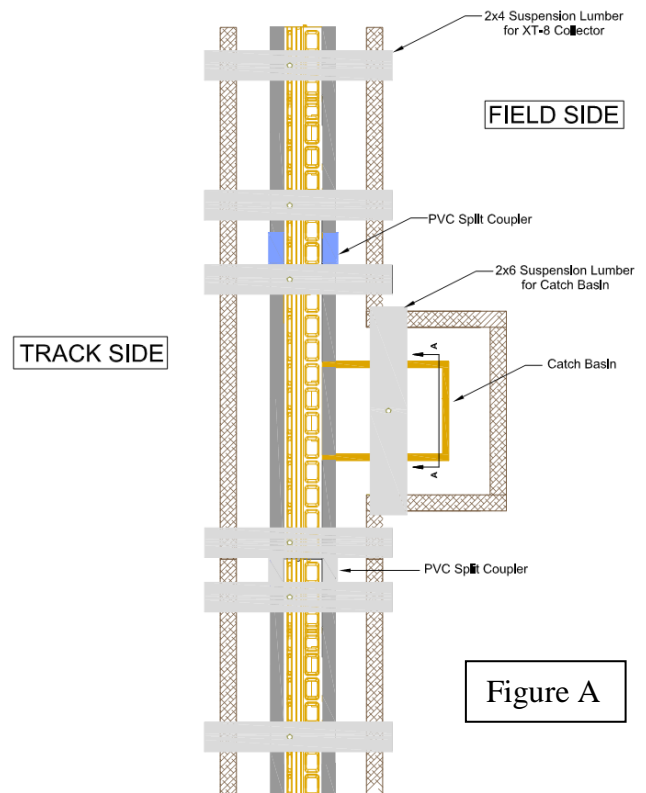
*3/8" Masonry Drill Bit

*3/8" Wood Drill Bit

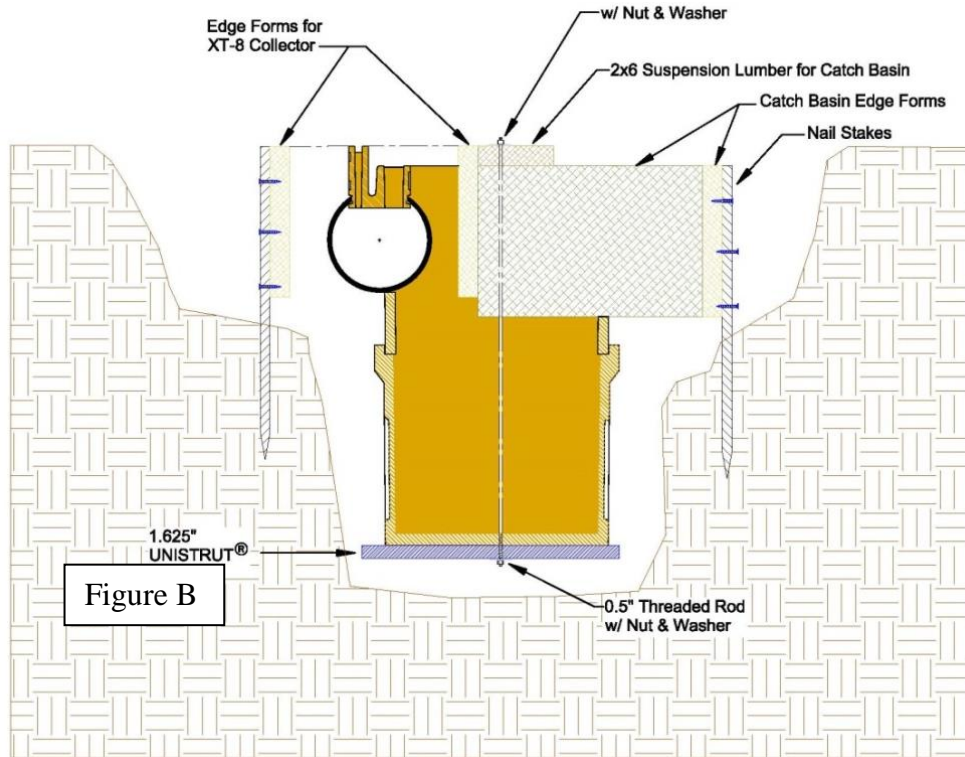
1. **Set concrete edge forms** on both sides of the excavated trench to the correct elevation. This elevation is per architectural plans for the top of the finished concrete encasement on the track (higher) side. Check all elevations using a laser level and string lines.

It should be noted that the finished concrete will not be visible in the completed project.

The forms should be sturdy enough to ensure no movement during the concrete placement. Install grade stakes as required by local soil conditions.



The forms for the suspension and concrete encasement of the catch basins are to be placed on the field side of the XT-8 Collector (Figure B). **These forms are set lower than the XT-8 Collector forms** and equal in elevation to the lower set of drain holes in the Collector (See Figure B & Installation Photos Below).



2. Lay out the XT-8 Collector sections alongside the formwork. Attach a PVC Joint Coupler to one end of each channel. Center the coupler so that ½ of it will cover each channel.



3. Drill a 7/16" hole through the 2" x 4" x 24" suspension lumber approximately 10" inches from one end. Insert an eye bolt through the hole in the 2" x 4" and attach a washer and nut. **Attach two boards to each one-meter section**, one near each end (second or third slot from each end) by inserting the eye of the bolt through the upper, narrower drain slot, spinning the eye 90° so it is now perpendicular to the slot and tightening the nut firmly. Tighten by hand. Do not use power or air tools as excessive tightening could break the polymer concrete body.



- Place and center the assembled sections on the concrete forms. The high side of the XT-8 Collector should be oriented toward the track side. Make sure the XT-8 Collectors are set straight. The open polymer slot should remain aligned. The Collectors are joined end to end using the tongue-in-groove connection and the split PVC Joint Couplings. Nail suspension lumber to the edge forms. Once the drain is set and secured; double check the location and alignment before placing the concrete.



- Before permanently setting catch basins, it is important to **cut or drill out** the appropriate 8" hole for the outlet pipe in the catch basin sidewall as indicated on the project design drawings. This can be done using a diamond tipped hole saw, or 3/8" masonry drill bit. When using masonry drill bit, drill holes around the circumference at 3/4" centers and tap out the remaining fins of polymer concrete with a cold chisel.



6. **Assemble the Catch Basins.** Place a ½” x 40” threaded rod through the center hole that is in the bottom of the lower section and attach an 18” long section of UNISTRUT® to the underside of the catch basin and secured by a flat washer and nut. Thread the rod flush with the last threads in the nut. This will keep concrete out of the threads and make it easier to remove the rod later. Orient the UNISTRUT® across the short side of the catch basin. Turn the assembly upright and place the top section onto the bottom section. Drill a 5/8” hole in the center of a 3’ long 2” x 6”. Place the rod through the hole in the 2x6 and orient the board across the short side of the basin. Draw the entire assembly together by installing a flat washer and nut.



7. The catch basin assembly can now be set on the form placed for them so that the catch basin fits tightly against and conforms to the XT-8 Collector. Reach inside the catch basin top and trace the perimeter of the visible PVC pipe. Lift the basin assembly out and **cut out the traced hole** with the appropriate saw. Place the basin assembly back on the forms and secure. Make sure the catch basin is positioned snugly against the PVC pipe and polymer concrete top of the XT-8 Collector.



8. **Keep the drain slot openings protected** and clean throughout the construction process. Duct tape will help keep debris and concrete out of XT-8 Collector during installation.

Note: Prior to installation of the track surfacing, it is recommended that a backer rod or other filler material be placed in the track drain slot to ensure that the slot remains clear of track material. Use a sharp utility or razor blade to remove the backer rod material once the track material has set.

9. Pour concrete encasement being careful not to chute concrete directly against the XT-8 Collector. Concrete should be brought up to the top of the form on the track side and only up to the level of the drain slots on the field side (Figure C). Be careful not to move the channels out of alignment during concrete placement. Distribute concrete evenly. Use a rod to completely consolidate the concrete during concrete placement.

